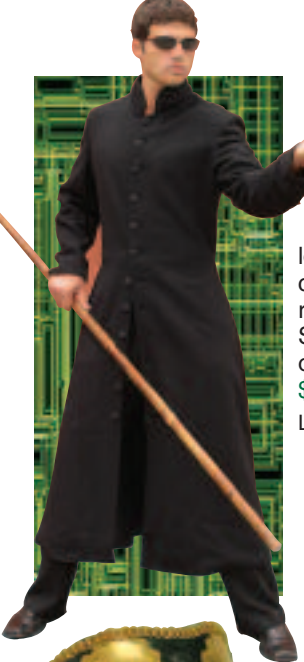


Name _____
 Address _____
 City _____
 State _____ Zip _____

Traditional Hickory Walking Staff (A)

(A) Real hickory wood! Features clear satin finish (looks hand polished), leather wrist thong and removable rubber safety foot. Approx. specs: 59" long, 1 1/4" dia. at the top. Weighs 2 1/4" lbs. #803248...\$20 (\$5 addl. s/h for air)



Nehru SE

Stylish full-length flowing garment is manufactured of 100% black wool, has a tapered waistline cut for a true form-fitted look and has all buttons covered in a rich black fabric. Fully lined. Available in S, M, L, or XL. Dry clean only. #100698...Reg. \$149...Closeout \$99 Limited Quantity Available



(B)



(C)



(D)



(E)

Venetian Masks

You will be the talk of the masquerade ball when wearing these hand-made paper mache masks. Each is painted with rich enamels and detailed with sparkling trims and decoupage papers. Black ribbon ties for a secure fit.

- (B) Zanni-#200736...\$50
- (C) Colombina Harlequin-#200756...\$36
- (D) Colombina Cordone-#200758...\$36
- (E) Colombina Opera-#200742...\$36

German War Hammer

Replicated from an example in the German National Museum in Nuremberg. Steel head is secured to the hardwood shaft with steel langets. Brass tacks provide a more secure grip. Made by Windlass Steelcrafts®. #600366...\$69 Overall-21 1/2" • Head-1" x 5" • Wt.-2 lbs.



17th Century Shoe

Hard leather sole with 1" heel. Lace closure. Black suede only. Sizes 7, 8, 10, 11, 12 and 13. #100292...Reg. \$70...Closeout \$49

Hewing Spearhead

The Celts as well as the Vikings used this type not for throwing, but as an effective cutting weapon. Blade is 3/8" thick x 2 1/2" wide and 13" long. 19 1/2" overall. Socket will fit a 1 1/4" round pole (not supplied). #600062...\$30

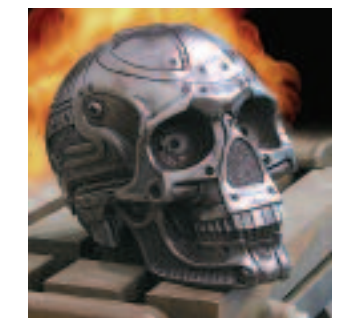


Galatic Brown Boots

A full length side zipper allows for easy on-and-off wear. #200556...Reg. \$165...CLOSEOUT \$45

Limited Quantity

Robotic Skull



You are scheduled to be terminated. An incredible futuristic skull with a metalized finish. All details such as screws, fuses, computer ports, etc. are highly detailed and may give us an eerie look into the future. Cold cast resin. 7 1/4" deep, 4 1/4" wide, 5 3/4" tall. #801388...\$35

Dragon Sand Timer

A This magnificent piece of artwork is as functional as it is beautiful. Two rampant dragons guard the rotating 3" minute white sand timer and stand on a celtic design base. Measures 7 1/2" x 2 1/2" x 6". #801476...\$28



CIRCA 1500s



(F)

Flared Long Sword

(F) High carbon steel. Full tang. Steel pommel and and guard. Leather wrapped grip. Comes with scabbard. Made by Windlass Steelcrafts®. #500928...Reg. \$245...Closeout \$185 Overall-48" • Blade-38" long, 3 1/2" wide, 3/16" thick • Wt.-3 lbs. 8 oz.

Nasal Helmet

Aged 18 gauge steel, modified Norman style helmet gives better side and neck protection. Fully leather lined and adjustable. Stand included. #300374...Reg. \$165...Closeout \$125

Helmet Stand

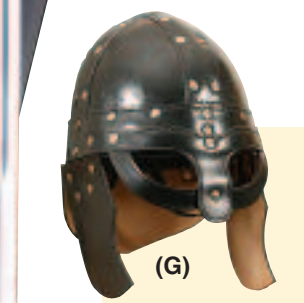
Handsomely accommodates any size helmet from Morians to Great Helms. Beautifully turned hardwood post has sturdy round, beveled base. Stained. 18 1/4" tall. Comes unassembled. Wt. 2 lbs. 10 oz. #800040...\$30



Leather Helms

Perfect for reenactors, LARP and faire

They're lighter and more versatile than steel, while still providing an authentic look and modest protection. Ours are made of very thick harness grade leather, and are copied from our steel styles. Adjustable liners.



(G)



(H)

- (G) Viking-Approx. 1 1/4 lbs. 25 3/4" inner cir. #200494...\$110
- (H) Roman Trooper-Approx. 1 1/4 lbs. 24" inner cir. #200548...\$120

Countess Dress

This full-length, black crushed cotton velvet gown has the bell-cut sleeves and square-cut neckline trimmed with a silver floral pattern, encrusted with dark jewels. The open cut front is lined with a dark silver lamme, while the easy lace-up back ensures a stunning, shapely fit. Dry clean only. S, M, L, or XL. #100670...\$120



Saxon Hilt

This one-hand cut and thrust sword falls into a class of German swords called Saxon hilts, which were designed with a lower ring filled with an artistically worked metal plate to prevent the intrusion of an opponent's sword tip. A large steel pommel balances the cut and thrust blade very nicely. The guard is also solid steel. Leather covered, grooved wood grip gives a very positive hold. Comes with leather scabbard. Made by Windlass Steelcrafts®. #500912...Reg. \$265...Closeout \$169 Overall-41 1/4" • Blade-32 3/4" long, 1 1/2" wide. 3/16" thick • Wt.-3 lbs. 6 oz.



CIRCA 1500

Explorer's Leather Doublet

Top grain leather is ultra soft and is complimented by 19 antiqued brass buttons down the front. Dark brown rayon lining. Choose S/M or L/XL. #100808...Reg. \$180...Closeout \$139



Dragoncross Candle Holder

This stunning cold-cast porcelain candle holder has been magnificently sculpted with two perched dragons with extended wings and has a darkened stone-like finish. Can be displayed as a centerpiece using the optional cross, which is included. Candle not included. 6 1/2" tall, 7 1/2" wide. #801630...\$29



Cyborg Skull

Half man, half machine are melded together in this great piece from some future war. The cold-cast porcelain has been expertly metalized, giving it the look and feel of antiqued steel. 7 1/2" long, 5" wide, 5" wide. #801634...\$39



Museum Replicas Limited
 Box 840
 Conyers, Georgia 30012-0840

PLEASE PUT
 STAMP HERE
 Post Office
 Will Not Deliver
 Postage
 Due Mail

Authentic Arms & Armor Replicas & Period Clothing At Affordable Prices

Spring Sale

Our spring sale this year will be on Saturday, May 17th, from 8:00 AM EST till 5:00 PM EST. Make your plans now to join us for great savings on discontinued merchandise and **15% OFF** all in-stock regular catalog items.



Court Rondel

Rondel Daggers were popular on the battlefield, but were often worn for more civilized functions. This well-decorated fighting knife is perfectly suited for Court, with gleaming brass parts in a stylized flower motif. The grip is wood with round leather cord and the blade is from tempered high carbon steel. Scabbard is included. Made by *Windlass Steelcrafts*®. #402632...\$89 ✈

Overall-15½" • Blade-10" long, 1" wide, ⅜" thick • Wt.-12 oz.



Circa
1500



Euro-Spearhead



One of the world's most ancient weapons, the spear was a dominant presence on the field of battle for an amazingly long period of time. This particular blade form was put to use during a wide range of European history by a wide range of cultures, from Ancient Celts and Greeks to well through the Renaissance. The blade is tempered steel and the socket fits a 1¼" round pole (not included). Made by *Windlass Steelcrafts*®. #600766...\$45

Overall-16" • Blade-9½" long, 2" wide, ⅜" thick • Wt.-1 lb. 2 oz.

Use with our Butt Caps on pg. 56



Renaissance Dagger

This large parrying dagger is as graceful as it is effective. In a time when everyone carried some type of knife, this dagger stood out as a true fighting knife. The steel parts are decorative but strong and the leather covered grip is grooved for a very positive grasp. The strongly pointed blade is from tempered high carbon steel with decorative short fullers. Scabbard included. Made by *Windlass Steelcrafts*®. #402558...\$95 ✈

Overall-18¾" • Blade 12" long, 1½" wide, ⅜" thick • Wt.-1 lb. 4 oz.

KING HENRY ENSEMBLE



(A)

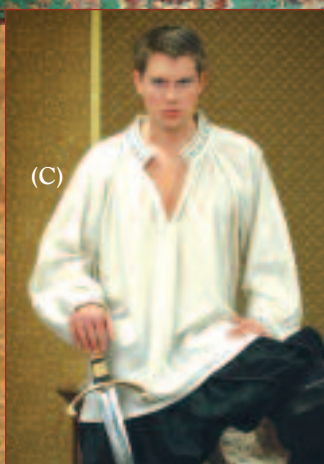


(B)

(D)

(A) **Red Royal Cape**-Tudor style, faux fur trimmed cape. One size. #882009...\$270

(B) **Doublet**-a stunning padded black cotton velvet doublet, accented with antiqued silver trim and jeweled buttons. Dry clean only. Black S, M, L & XL. #882007...\$160

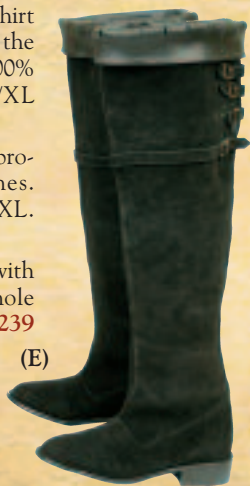


(C)

(C) **Cross Shirt**-a generous period shirt with an embroidered cross pattern on the collar. Hook & eye closure on collar. 100% cotton. Natural S/M or L/XL #882006...\$54

(D) **Pants**-matching black-on-black brocade paneled pants with open slashes. Button-up front. Black S/M or L/XL. #882008...\$95

(E) **Suede Boots**-tall, all suede boot with slash leather uppers. 25½" tall. Whole men's sizes 9 through 13. #882010...\$239



(E)

CALL TOLL FREE
1-800-883-8838



Reverse

ROYAL SEAL PAPERWEIGHT

Copied from the actual on-screen seals used for the TV series. Made of metal, plated in bronze and antiqued. Face is the seal of King Henry, while reverse is the seal of Pope Paul III. 4½" diameter. #882004...\$48



SHOWTIME is a registered trademark of Showtime Networks, Inc., a CBS Company. © 2008 Showtime Networks, Inc. All Rights Reserved. "The Tudors" © 2008 TM Productions Limited/PA Tudors, Inc. An Ireland-Canada Co-Production. All Rights Reserved.

THE TUDORS

COLLECTION



QUEEN KATHERINE GOWN

The deep rich blue of this stunning gown is royally accented with gold hand-stitching and over two dozen artificial white pearls. The cuffs of the sleeves are trimmed in a faux fur, while the inner sleeves are made of a delicate sheer blue netting. Dry clean only. S, M, L or XL **#882017...\$195**



ANNE BOLEYN GOWN

This gorgeous two-piece gown is sure to turn heads with its golden champagne floral fabrics and sleeves lined in a deep burgundy. Artificial pearls and two jeweled brooches accent the front, while the back laces up for comfort. Dry clean only. S, M, L or XL. **#882019...\$270**

THE ROYAL JEWELS

All pieces in The Tudors jewelry collection have been hand made in the States by the master craftsmen at Sorrelli Jewelry. Sorrelli was chosen as the official suppliers of the fine jewelry used in the actual production, since every piece utilizes their meticulous craftsmanship coupled with the finest genuine semi-precious earth stones and Swarovski Austrian crystals. Every piece is designed to last for generations.

Black Velvet-antique silver finish, featuring Jet & Hematite crystals.

(A) Necklace-**#200968...\$285**

(B) Earrings-**#200966...\$85**

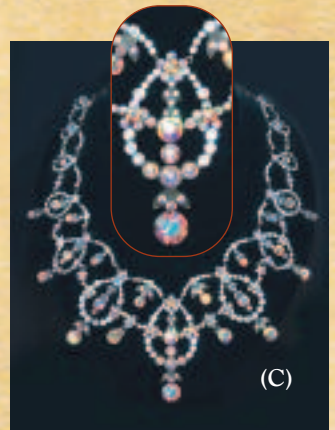
Snowflake-antique gold finish, features clear Aurora Borealis Crystals

(C) Necklace-**#200964...\$285**

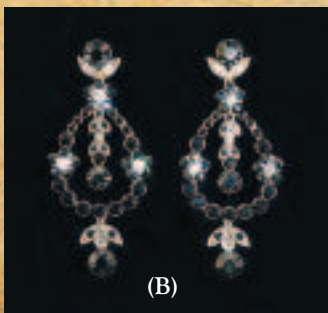
(D) Earrings-**#200962...\$75**



(A)



(C)



(B)



(D)

KING HENRY COURTLY ENSEMBLE



(A) **Brocade Courtly Cape**-Tudor style, black faux fur trimmed cape. Rich gold, black and burgandy brocade with rayon lining. Dry clean only. One size. #882015...\$195



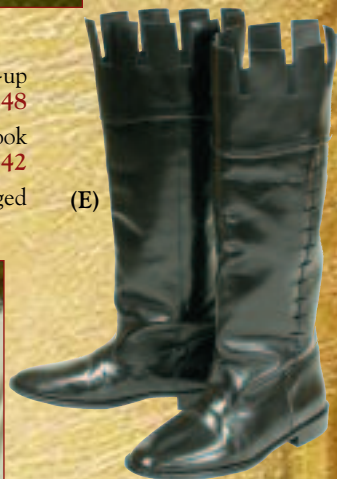
(B) **Green Doublet**-a padded courtly doublet lavishly accented with a gold brocade. Dry clean only. Green S, M, L & XL. #882013...\$145

(C) **Pants**-period black knee britches with a royal satin-like finish. Button-up front and lace-up back with laced calves. Rayon. S/M or L/XL. #882014...\$48



(D) **White Shirt**-bright white period shirt with a black edged Tudor collar. Hook & eye closure on collar. 100% cotton White S/M or L/XL #882012...\$42

(E) **Castle-top Boots**-knee high full leather boot with a castle-top dagged edge. Black Whole men's sizes 9 through 13. 17½" tall. #882016...\$155



TUDOR CHAINS OF OFFICE

Also known as a livery collar, these chains were worn to denote attachment to a great person by friends, servants, and political supporters. This reproduction of the Collar of Esses has the Tudor rose hanging from dual portcullis. Fully-sculpted metal links and measures a full 36" circumference with a 3½" rose. \$85 each

Antique silver finish-#200960 • Polished Brass-#200958

KING HENRY CEREMONIAL SWORD

This beautiful cut-and-thrust sword is truly fit for a king. Henry the VIII had a love of weapons and armor and had many pieces custom made for himself. This royal sword appears on "The Tudors" and was designed specifically for the show by Museum Replicas Limited™. The highly detailed parts are gold plated, while the grip is wood covered with leather and twisted wire. Made by **Windlass Steelcrafts®**. Includes scabbard. #882002...\$295 ✂

Overall-43" • Blade-36" long, 2" wide, 3/16" thick • Wt.-3 lbs. 4 oz.



ARMILLARY SPHERE

The armillary sphere, used to track the great circles of the heavens, was reintroduced to Europe via Islamic Spain in the late 10th century and was further advanced during the Renaissance. This intricately assembled bronze and wood reproduction is a classical desk ornament for the broad and cultured of minds. Overall

dimensions:

11" H x 7" W. #801646...\$150



TUDORS LETTER OPENER

King Henry's royal ceremonial sword and jousting helm have been accurately reproduced in a beautiful miniature letter opener and stand for any king in your household. 8½" inches tall. #882001...\$48



CALL TOLL-FREE
1-800-883-8838

KING HENRY JOUSTING HELMET

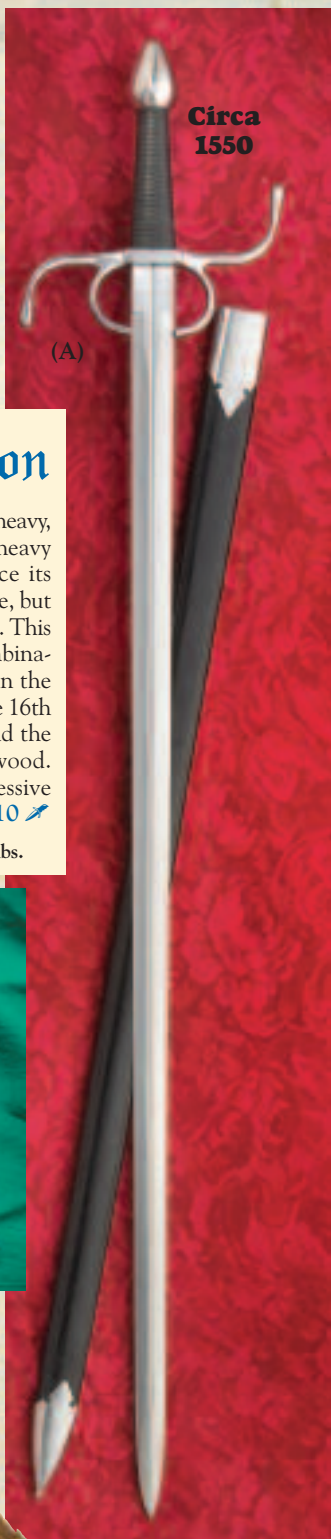
A faithful reproduction of the Maximillian styled helm used in the series. The crest and rivets have been plated in polished brass. Moving visor, opening side cheek plates and an attractive Tudors display stand. #882003...\$345



Military Sword Rapier

(A) Gun power had started to rule the battlefield, but loading a gun was a time consuming process, so a soldier still needed a good sword like this one. The blade is a classic sword rapier type, long but able to deliver a sound cut as well as a thrust. The hilt reflects a transitional period when swordmakers left off the bars of earlier rapier hilts to make it easier to carry, and were working toward the modern military sword hilt. This kind of sword was used all over Europe and the new world. The original is in the Castle Saint Angew, Rome. The parts are steel and the grip is wood wrapped in flat leather lacing for a firm grip. Made by *Windlass Steelcrafts*®. Includes scabbard. #501044...\$235 ✂

Overall 43¼" • Blade 37" long, 1¼" wide, ⅜" thick • Wt.-2 lbs. 4 oz.



Circa 1550

(A)

Circa 1510



Italian Falchion

(B) The falchion was considered a heavy, single edged weapon designed for heavy chopping. During the Renaissance its form became a little more elaborate, but its functionality remained the same. This

was a heavy battle sword designed to oppose the combinations of plate and mail armor. We have copied a sword in the Florence Museum dating from about the first quarter of the 16th century. The blade is high carbon steel. The guard and the pommel are steel, while the grip is polished hardwood. Scabbard mounts are also steel. A beautiful and impressive sword. Made by *Windlass Steelcrafts*®. #500882...\$210 ✂

Overall-33" • Blade 26" long, 1¼" wide, ⅜" thick • Wt.-3¼ lbs.



(B)



Venetian Stiletto

Circa 1520

Stiletos came in many sizes, from delicate little hideout weapons to forthright long daggers suitable for use even as a main gauche, but this is certainly one of the more attractive ones we've come across. Blade face is beautifully hollowed. Grip is wood. Made by *Windlass Steelcrafts*®. Comes complete with sheath. #400994...\$85

Overall-13¼" • Blade-8¾" long • Wt.-7 oz.



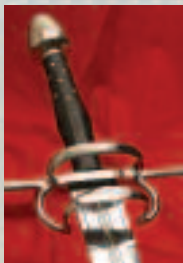
Let Us Give You An Edge

Look throughout our catalog for this "sharpening" icon, which will appear after the item's price. This will tell you if the piece which you are looking at is able to be sharpened. For only \$15 for a knife or \$18 for a sword. Our master bladesmiths will put an expert sharpened edge on your weapon. Return restrictions may apply.

Saint Michael Statue

Saint Michael, together with St. George, became the patron of chivalry during the Middle Ages. This gorgeous sculpture is based on Guido Reni's painting "Archangel Michael" housed in the Capuchin church of Santa Maria della Concezione, Rome. Standing an impressive 14½" tall, this cold cast resin statue depicts Michael trampling Satan and has been metalized, giving it the look and feel of actual antiqued bronze. #801572...\$40





Italian Hand-And-A-Half

(A) The long quillions are fitted with rings for excellent hand protection. The grip is studded for a very secure hold and the pommel is large to balance the long, beautiful, etched blade. This kind of large, deadly sword saw service in battles all across Europe during the countless exchanges for territory and dominion, as well as religious wars between Catholic and Protestant nations. Made by **Windlass Steelcrafts®**. Includes scabbard. #500926...Reg. \$275...Closeout \$235 ✂

Overall-47 1/4" • Blade-40" long, 2" wide, 1/4" thick • Wt.-4 lbs.

Can be seen in "Armi Bianche Italiane".

(A)

The Consequences of a Bad Temper



Our swords will flex over 3" and return to true. Shown is a competitor's sword that we flexed. It stayed bent because it wasn't properly tempered.

**Circa
1500s**



Early Renaissance Shirt

This simple, attractive shirt is suitable for a wide variety of period outfits and looks especially flattering when worn under a vest or jerkin. The billowy sleeves and open neck provide dashing comfort and generous freedom of movement for sword-play, or of course, less threatening kinds of play. Available in men's sizes S, M, L or XL. White only. Poly cotton, hand wash. #100196...\$42 XXL-\$47

(B)

**Circa
1600**

German Hunting Saber

(B) Although the European Hunting Swords of this age were generally fitted with 12" to 24" long blades, the Germans seemed to have a preference for big blades. In Medieval times there was rarely any difference between swords used for war or the hunt and this later period full length sword carries out that tradition. Boar and large deer hunting was a passion of the rich for centuries, but by the 1600's hunting was open to most classes, and this attractive sword would do to dispatch large game as well as defend one from brigands. This well-balanced, well-tempered sword comes with a scabbard and will make a worthy addition to any collection. Made by **Windlass Steelcrafts®**. #500918...\$215 ✂

Overall-39 1/8" • Blade-33 1/2" long, 1 1/4" wide. 3/16" thick • Wt.-2 lbs. 10 oz.

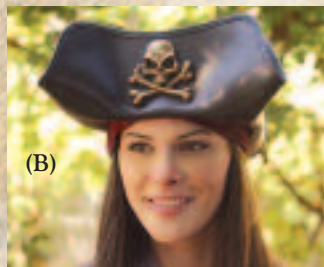
Can be seen in the book: *A Collector's Guide To Swords, Daggers, And Cutlasses* by Gerald Weland.

PIRATE CUTLASS

Many a bloody-handed pirate of the 17th century clambered over the side of a gold laden galleon armed with a cutlass such as this. Known by many names – “hanger,” “cuttoe,” and “short saber” by infantry, or “cutlass” by sailors – this was an exceedingly popular short weapon. The steel basket protected the hand and could be used as an armored fist in the close confines of shipboard combat. High carbon steel blade made by **Windlass Steelcrafts®**. Steel pommel and leather-covered wood handle. Includes leather scabbard. #500160...\$235

The Pirate's Domain

Overall-28½"
Blade-22½" long,
2" wide, ⅜" thick
Wt.-2 lbs. 10 oz.



BUCCANEER COAT

(A) The bitter cold of the English Channel will be no match for this dashing captain's styled coat. This heavy grey woolen coat is one of the best we have ever produced. The long period cut, the large bell cuffs and the richly antiqued buttons all add up to make this coat one stunning piece of pirate garb. Choose **grey** or **navy blue** w/black rayon lining. Dry clean only. Sizes S, M, L or XL. #100780...\$125 XXL-\$140

(B) **Skull & Crossbones Leather Hat**-This stylish variation of the standard pirate tricorne hat is fine black leather and has an antiqued brass skull and crossbones emblazoned on the front, so there will be no mistaking you for anything else but a true buccaneer. Suitable for men or women. Sizes S/M or L/XL. #200664...\$78



GENTLEMANS LONG VEST

A great piece of apparel for wear under your pirate coat or alone. The dashing metallic brocade patterns of this rich vest are accented with antiqued buttons and an adjustable belt in the back. S, M, L or XL. Choose either gold or silver. 100% rayon, dry clean only. #100884...\$95 XXL-\$99



Gentleman's Long Vest shown with our Noble's Shirt found on pg. 8.



(A)

(C)

The Pirate's Domain



(B)

(D)

BLACK ORCHID ENSEMBLE

The high seas have never looked better, than with the appearance of the deadliest female pirate on the Spanish Main, the Black Orchid. All three pieces compliment each other or can be worn separately. Available in S(8-10), M(12-14), L(16-18) and XL(20).

(A) Black Orchid Jacket-Made of a brocade black-on-black fabric, with lace-up sleeves and a sewn on leather corset on the outside. Dry clean. #100738...\$130

(B) Black Orchid Shirt-Made of poly/cotton blend. V neck opening with tie. Sleeve cuff trimmed with an abundance of lace. Red only. Hand wash. #100734...\$39

(C) Black Orchid Pants-Black stretch velour pants, with leather straps, which buckle around your calves. Dry Clean. #100736...\$48

(D) Leather Corset-Jump into action with this swashbuckling corset. Made of the finest black leather, it is decorated with an array of antiqued silver buttons and buckles. A lace-up back allows for adjustability. Sizes S, M, L or XL. #100600...\$95

NOBLE'S SHIRT

Beautiful late renaissance shirt with standing rucked collar front and pearl buttons. Three tiered cascading center front ruffle and sheered long sleeves ending in pearl button ruffled cuff. A must for the well dressed lord. S, M, L or XL. Choose purple, black or white. Cotton blend fabric. Dry clean only. #100396...\$60 XXL-\$65



SKULL & CROSS SWORDS PENDANT

Menacing red crystal eyes and antique finish sets the dreaded tone and the high detail is wicked with the skull and crossed swords design jumping off your chest. Includes braided cotton necklace with metal clasp. 1" x 1" x 3/8" thick. #801362...\$7



PIRATE COIN NECKLACE

This is a magnificent recreation of an actual Spanish "Pillars and Waves" Pieces of Eight coin. This double-sided, sterling silver coin is a perfect companion on any long voyage. 24" inch rhodium plated, double rope chain with clasp included. Measures approximately 1.3" long, 1" wide, and .06" thick. #801312...\$49



PIRATE'S COMPANION

Where would the seafaring rogue be without his trusty cutlass? This stout sword is made to be as rugged as the originals. High carbon steel blade. Gorgeous brass basket and nice hardwood grip. No need to sail the high seas in search of ill-gotten riches; this beauty is a treasure in itself. Made by Windlass Steelcrafts®. #500180...\$185 (5\$ addl. s/h)

Overall-32" • Blade-26" long • Wt.-2 lbs.

HUNGARIAN SABER

Standing in Eastern Europe, Hungary was often warring with both the west and east. Though a western type feudal state, they were also alternately allied and at war with Byzantium too. This abundance of cultural exposure was echoed in their weapons. The eastern influence shows well in this heavy saber, capable of powerful blows from horseback or foot. The short guard and large pommel are both brass and the grip is wood covered in leather. Includes scabbard. Made by **Windlass Steelcrafts®**. #501084...\$175 ✂

Overall-36¼" • Blade 30" long, 1½" wide, ⅜" thick • Wt.-2 lbs. 12 oz.

**Circa
1500**

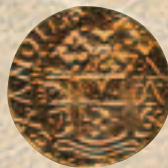


PIRATE PLUG DAGGER

All kinds of weapons found their way onto pirate ships, as long as they were good weapons. This plug bayonet served a double role. It made a very effective fighting dagger with its long, wide blade, but in a pinch it could be fit in the barrel of a musket to make a short pike. The antiqued brass parts are in the form of angels and the grip is turned hardwood. The blade has a cut-out cross and comes to a keen point. Includes sheath that will fit up to a 4" belt. #402526...\$95 ✂

Overall-15½"

Blade 9" long, 1½" wide, ⅜" thick
Wt.-10 oz.



SPANISH BUST PESO WITH PIECES OF EIGHT OR GOLD DOUBLOONS

With the conquest of Mexico in 1519, the Spanish put the native Indians to work mining gold and silver. One set contains a Bust Peso (the coin of the realm) and three Pieces of Eight, which was the ideal way of making change. The second set has four gold doubloons, marked with the seals of King Philip V and minted in the year 1736. Both sets are minted in the US from actual coins currently in private collections. \$10 each

Bust Peso/Pieces of Eight #801688 • Gold Doubloons #801690



PIRATE PENDANTS

A perfect addition to complete your pirate attire. \$18 each
Skull & Crossbones-Antiqued brass. 1½" across. #200888
Blackbeard-Antiqued nickel emblazoned with the seal of Edward Teach, known as Blackbeard. 1½" x 1½". #200890





PIRATE CAPTAIN'S HANGER

Beautifully antiqued brass and steel hilt with fully tempered high carbon steel blade is worth its salt against any seabeast or while swarming the side of a galley. Includes scabbard. Made by *Windlass Steelcrafts*®. #500968...\$175 ✂
Overall-32 1/2" • Blade-26" long, 1 1/8" wide, 3/16" thick • Wt.-2 lbs.

CAPTAIN'S COAT

Our Captain's Coat is taken from a northern European military leader's coat of the late 1700's, and is made roomy for comfort. Made of a lush cotton corduroy in your choice of **burgundy**, **royal blue** or **hunter green**. Delicate gold and black trim shimmers. Colors may vary slightly. Available in S(42" chest), M(46" chest), L(50" chest) and XL(54" chest). Wear it with comfort and authority. Dry clean only. To complete this outfit, we used our Knee Breeches, Thigh High Boots and Baldric which can be found on pg. 24. #100040...\$120



PIRATE BELTS & SASHES

Wide Pirate Belt-This stately belt harkens back to the days of the adventurous high seas. With a large 5 1/4" antiqued brass buckle and a 2 3/4" wide leather belt, this piece looks great when combined with any of our sashes. Measures 56" long. Brown only. #200716...\$48

Sashes-These metallic rayon sashes measure 96" in length and are edged with multiple tassels. Order Burgundy or Gold. One size. #100822...\$24



PIRATE'S BALDRIC

In this cutlass baldric, not only do you get a classic form for wearing a sword but also two close quarter fighting knives with real polished bone scales that ride firmly in integral scabbards. This **black** baldric will fit all types of swords. Frog is left open for the wearer to customize. One size fits most. (Right hand crossdraw: the knives are in front. Left hand crossdraw: the knives are in back.) Knives from tempered high carbon steel. #200634...\$98

Overall-10 1/4" • Wt.-6 oz.
Blade-6 1/4" long, 7/8" wide, 3/16" thick



SKULL WITH CROWN FLAG

A perfect flag for a pirate king. Double sided, indoor/outdoor nylon. 3' x 5' with metal grommets. #801748...\$12

CALL TOLL-FREE
1-800-883-8838

DUTCH EAST INDIA CUTLASS

This historically accurate cutlass is replicated from a type once used by the Dutch East India Co., but its like could be found across the seven seas. It must be stressed that no design rules applied to the early cutlass, and they took several forms. Our version features a slightly curved wood grip married to a gracefully formed knuckle guard and a steel shell on a long, effective blade. Includes scabbard. Made by **Windlass Steelcrafts®**. #500338...\$235

Overall-33 1/2" • Wt.-2 lbs. 10 oz.
Blade-28" long, 1 1/2" wide. 3/16" thick



CIRCA
1763



SCOTTISH CUTLASS

The crashing of waves, the roar of cannons, the shout of sea roques through the foreboding mist – this new cutlass can't help but unleash adventurous images. Scottish born Capt. (William) Kidd, we're sure, would have favored this sword. As seen in period art, the Scottish Basket-Hilt was at times married to a cutlass blade (this one has a double edge for the first 9" of the blade). The basket itself provided excellent hand protection and could deliver a hard blow in the crowded melee that ensued onboard. Made by **Windlass Steelcrafts®**. Includes scabbard. #500920...\$265 ✂ (\$3 addl. s/h)

Overall-31 1/2" • Blade-25" long, 2 1/8" wide. 3/16" thick • Wt.-3 lbs. 4 oz.



ELEGANT 17TH CENTURY DRESS

A classic Renaissance noblewoman's dress created in the Italian style. For the lady of class, this dress is for times at court or other official functions. Our **burgundy** and **black** floral dress has a black center front skirt panel adorned with lovely trim as well as the sleeves. S, M, L or XL. Dress is 60% cotton and 40% polyester. Sleeves and underskirt are made of 100% corduroy. Dry clean.

#100438...\$139



CIRCA
1690

CRYSTAL CROSS

This dazzling cross measures a full 3 1/2" and has over 120 Austrian crystals adorning its face, with 4 larger stones at each end. A delicate fine beaded chain with clasp complements the look. #200642...\$28



THE BLACK PIRATE ENSEMBLE



(A)



(B)

(D)

(E)

(F)



(A) Vest-this matching vest is perfect to complete the look of this ensemble or it can be worn by itself. A rich black cotton velvet makes up the body, which has been decorated in a Napoleonic style with gold and black trims. 18 antique brass buttons complete the vest, along with an adjustable back strap. Dry clean only. Order S/M, L/XL. **#100942...\$79**

(B) Noble's Shirt-Three tiered cascading center front ruffle and sheered long sleeves ending in pearl button ruffled cuff. A must for the well-dressed lord. S, M, L or XL. Choose purple, black or white. Cotton blend fabric. Dry clean only. **#100396...\$60 XXL-\$65**

(C) Bandana-Suede-like texture with rough weathered lace. 100% rayon. S/M (up to size 8) or L/XL (up to size 10). **#100972...\$34**

(D) Sash-Rayon sash measures 96" in length and edged with multiple tassels. Order Burgundy or Gold. One size. **#100822...\$24**

Wide Pirate Belt-This stately belt harkens back to the days of the adventurous high seas. With a large 5 1/4" antiqued brass buckle and a 2 3/4" wide leather belt, this piece looks great when combined with any of our sashes. Measures 56" long. Brown only. **#200716...\$48**

(E) Velvet Pants-Comfortable fitting pair of black stretch cotton velvet tights, which have an elastic waist. S/M or L/XL. **#100836...\$43**

(F) Musketeer Boots-See pg. 17 for full description. Black suede. Hard leather sole with 1" wood/rubber heel. Sizes 8-13. **#100182...\$175**



(C)



(G)



(H)



(I)



SKULL CANE

Menacing antiqued brass skull hides a secret. Just unscrew the skull, and you can flip up a 5x magnifying telescope. Rich antiqued brass finish and black hardwood cane. 37 1/2" overall. **#801714...\$140**



FLAGS

Flags of some of the most nefarious pirates of the high seas. Double sided, indoor/outdoor nylon. 3' x 5' with metal grommets. **\$12 each**

(G) Micro Prose-**#801744** • (H) Stede Bonnet-**#801746**

(I) Henry Avery-**#801750**

SUNDIAL COMPASS

Pirates of old used this device to find their lost islands of gold. The sundial accurately shows the hour at a predetermined latitude, while the compass faithfully points north. Antiqued brass body and lid. 3 1/2" diameter. **#801644...\$42**



PIRATE KING CUTLASS

Features a high carbon steel, hand forged blade, well-tempered and with full tang as it was meant to be. The menacing cup guard is pierced through with a fearsome skull & crossbones. Grip is wood covered with leather and wire. The steel hilt and scabbard parts are artificially aged as if pulled from the darkest depths of Davey Jones' locker. #500964...\$255 ✈

Overall-32 3/4" • Blade-25 3/4" long, 1 1/8" wide, 3/16" thick • Wt-2 lbs. 6 oz.



(A)



(B)



(C)

FLAGS OF THE CARIBBEAN

These large 3' x 5' nylon indoor/outdoor, double-sided flags are authentic reproductions of the standards of some of the deadliest pirates in history. Grommeted for durability. \$12 Each

(A) Chistopher Condent-
#801438

(B) Edward Lowe-#801450

(C) Edward Teach (Blackbeard)-
#801440



CAPTAIN'S QUILL PEN & INK POT

You'll be able to chart a course for adventure with this magnificent pewter pen and inkpot. The pen (ballpoint, so you don't really have to contend with messy inkblots and the like) has a large 11" burgundy feather and finely detailed skulls and floral inlay work on the handle, while the inkpot is equally detailed with a matching pattern. Replaceable ballpoint pen makes this an item which can last forever. Made in England. #801568...\$56



PIRATE'S SOUL

Inside this deluxe interactive adventure you'll find engaging authoritative text on all facets of pirate life and history, outrageously complemented by rich full-color art and over 25 fun and fascinating 3-D interactive features, including a period compass, a removable nylon replica "Jolly Roger" flag, a fold-out treasure map, period playing cards, a cat-o'-nine-tails, a 1696 Wanted poster and much more! 11 1/4" x 9 3/4" hardcover. #801414...\$29



LETTER OF MARQUE BELT BUCKLE

This intricately designed belt buckle is hand crafted in England and is made of fine English pewter. Measures a full 4" X 2 3/4" and can accept up to a 1 1/2" wide belt (not included). #200876...\$60





PIRATE FLAG

The classic standard of pirate Jack Rackham. Indoor/ outdoor nylon. 3' x 5' with metal grommets. Flag is double sided. #801436...\$12



(A)



(B)



(D)



(E)



(C)

FIRST MATE'S OUTFIT

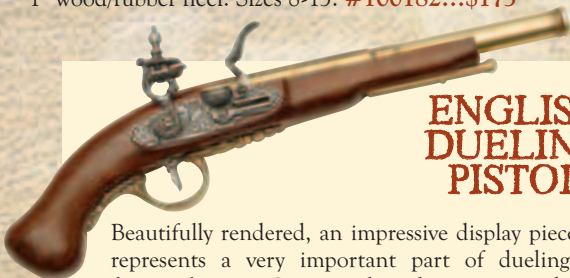
(A) Jacket-Even the crew can look dashing in this heavy wool bolero cut coat. With three-quarter sleeves, wide cuffs and large antiqued metal buttons, this jacket is perfect for any port of call. 100% wool with rayon lining. dry clean only. Brown only. S/M or L/XL. #100878...\$70 XXL-\$75

(B) Vest-Climb aboard for any adventure with this 17th century lace-up vest. Can be worn with a variety of period shirts and has even been worn by a few shipboard ladies. Red, green or navy. 100% cotton. Choose S/M or L/XL. #100520...\$45 XXL-\$50

(C) Pants-This long pair of durable 100% cotton pants are perfect for a variety of outfits. With its draw string waist, generous cut and slightly flared legs, and extra deep pockets, these trousers are comfortable when worn loose or inside a boot. Grey w/black stripes, black w/white stripes, solid green or black. Hand wash. S/M or L/XL. #100518...\$34 XXL-\$39

(D) Capt. Jack Tricorn Hat Inspired by the swashbuckling antics of Capt. Jack, it's for those who still live by the Pirate Code. Top grain leather with a dark brown finish. Choose S/M(8") or L/XL(10"). #200550...\$75

(E) Musketeer Boots Slip-on, single buckle adjustment across the front. Black suede. Hard leather sole with 1" wood/rubber heel. Sizes 8-13. #100182...\$175



ENGLISH DUELING PISTOL

Beautifully rendered, an impressive display piece and represents a very important part of dueling and firearm history. Cast metal working parts and wood stocks. Non-firing. #801226...\$42

Order 2 and Save - 2 for \$75

SHIPWRECK PIRATE COINS

Highly detailed replica coins in cast metal. Sizes vary 3/4" to 1". Great accessory for all costumes. #801410...\$7



Blackened Rapier



(A) This beautiful swept-hilt rapier has a blackened hilt and shell guard with an intricate floral design. The grip is wire over wood and the pommel is large enough to balance a blade that is capable of delivering a cut as well as a thrust. All together an attractive and effective rapier. Well-tempered high carbon steel blade. Made by *Windlass Steelcrafts*®. Includes scabbard. #500958...\$285 ✂

Overall 44" • Blade 36" long, 1" wide, ¼" thick • Wt.-2 lbs. 6 oz.



**Circa
1600**

(A)



(B)



Early 16th Century Rondel

(B) The rondel dagger was in widespread use for over two hundred years. This splendid example is probably one of the last designs of this form. This dashing dagger would be at home at the side of a noble. The brass pommel is highly decorative while the circular guard places the dagger in the rondel family. The grip is lovely polished hardwood and the long blade is lightly hollow ground and comes to a strong point. Made by *Windlass Steelcrafts*®. Includes scabbard. #402482...\$95 ✂

Circa 1520

Overall 17½" • Blade 12" long, 1⅜" wide, ⅜" thick • Wt.-12 oz.

CALL TOLL-FREE

1-800-883-8838

Swordsman Leather Ensemble



One of the most dashing images in historical literature is that of the swordsman. This handsome ensemble is made from the finest leather and has a noble cut. Both the doublet and the pants have dagged diagonal cuts and are decorated with a metallic trim. Twelve antiqued buttons close the doublet, while laces tighten the sleeves. The matching pants are ¾ length boot cut and have a zipper front and lace-up waist in the back. Both pieces are fully lined in matching rayon. Dry clean only. Sizes S/M or L/XL. Order Rust w/gold trim or Black w/ Silver trim.

Doublet-#100946...\$249

Pants-#100952...\$145

Set - \$349



The Musketeers



CIRCA 1590

(A)

(B)

(A) Rapier-The musket, though the prime weapon of the French Musketeers, was a cumbersome firearm, both to load and fire, so a good rapier was a necessary second weapon. The basket of this rapier's hilt is ambidextrous and a very effective mix of both the cup-hilt and swept-hilt styles. The grip is wood wrapped with twisted wire and the parts of the hilt are plated with gleaming nickel silver. #500784...\$265 ✂

Overall-46" • Blade-37½" long, 1" wide • Wt-2 lbs. 8 oz.

(B) Main Gauche-Carried at the back for a left hand draw, the main gauche was often brought into play with the rapier for a two-handed fighting style. The blade has cut-outs and notches to slow or disrupt an opponent's blade, while the hand was well-protected by the knuckle bow.

#401348...\$135 ✂

Overall-23" • Blade-17" long, 1½" wide • Wt-1 lbs. 12 oz.



(E)



(C)



(D)

(C) Tabbard-A rich blue cotton velvet fully lined with a matching satin. The front and sides are emblazoned with the fully hand embroidered silver cross and fleur-de-lis of the Musketeers, while the edges are finished with a matching silver trim. Dry clean only. One size fits most. #100516...\$110 XXL-\$115

(D) Shirt-The perfect companion piece for the Musketeer ensemble. The lace collar and sleeves are designed to accent the above Tabbard, while still allowing you to combine it with a variety of additional outfits. Made of white cotton, this shirt will give you years of practical use. S/M or L/XL. #100512...\$39 XXL-\$44

(E) Leather Cavalier Hat-No period outfit would be complete without a fine hat to top off a dashing appearance. Made of fine black leather, the hat has a stylish band with buckle along with the famous up-turned side brim. Simply add a colorful plume of your choice (not included) and you will be the talk of the kings' court. Black only. M or L. Please specify right or left side raised brim. #200552...\$85

Silver-Hilted Dagger

This dagger features a large, fully tempered high carbon steel blade with attractive fuller work married to a durable hilt. Guard, grip, and pommel are all made from solid nickel silver. Along with a black leather scabbard with nickel plated throat and tip. Made of high carbon steel by *Windlass Steelcrafts*®. #400326...\$120 ✂

Overall-14¼" • Blade-10" long, 1¼" wide, ⅜" thick • Wt.-1 lb.



CIRCA 1590

Can be seen in the book, "European Daggers" by Bashford Dean.

Three Ringed Rapier

With its graceful, artistic lines, the rapier has always been a romantic symbol of the Renaissance. The reality is that the rapier is a very deadly hand-to-hand combat weapon, perfectly suited for the swift moves of the duelists of the day. Many hilt forms were tried early on like this three ringed swept hilt. The grip is bone with a wire wrapping, making for a very secure grip. This is a light, fast, and deadly sword with a classical design. Made by **Windlass Steelcrafts®**. Includes scabbard. #500862...\$265

Overall 46" • Blade 39" long, 3/4" wide, 3/16" thick • Wt.-2½ lbs.



Left Hand Dagger

The left hand dagger (or "Ring Hilt" Dagger) was employed in the art of rapier and dagger swordplay. It was often worn at the back tilting to the left for easy access. This offering matches nicely with our three ringed rapier. The parts are steel and the grip is bone wrapped in wire for a good grasp. Made by **Windlass Steelcrafts®**. Includes scabbard. #402528...\$125 ✈

Circa 1590

Overall-12¼" • Blade-8" long, 1" wide, 3/16" thick • Wt.-1 lb



Musketeer Boots

The classic knee high version of the fold over boot made famous during the 17th century by the King of France's Musketeers and long popular with the upper classes. Slip-on, single buckle adjustment across the front. Black suede. Hard leather sole with 1" wood/rubber heel. A fitting compliment to our Musketeer Outfit (see pg 16). Sizes 8-13. #100182...\$175



All Steel Stiletto

Light, easy to carry and often worn like jewelry by both men and women. Stilettos were used throughout the European Renaissance, and were common at the feast table. The triangular shaped blade is deeply fullered on all three sides and comes to a very keen point. The grip and pommel are turned in steel as is the typical short guard. Black leather scabbard with steel parts included. Made by **Windlass Steelcrafts®**. #401620...\$95

Overall-13¼" • Blade 8¾" long x ½" wide • Wt.-12 oz.



**CIRCA
1590**

CALL TOLL-FREE

1-800-883-8838



Polish Sword

Poland was often embroiled in conflict with the East and that exposure shows in the crossguard shape of this sword to a great degree. The grip also has a unique shape and gives this strong sword even more distinction. A good, servicable sword with steel furniture and a wood and leather grip married to a fully tempered high carbon steel blade. Comes with scabbard. Made by **Windlass Steelcrafts®**. #501062...\$230 ✂

Overall 40 1/4" • Blade 30" long, 2 1/8" wide, 3/16" thick • Wt.-3 lbs. 2 oz.



**CIRCA
1200-1600**

Hunting Trousse

In the Middle Ages most of the nobility were devoted hunters. This large knife was used to dispatch the wounded animal, then dress out and carve the carcass. Sometimes the trosse was accompanied by a fork and a small knife for camp dining. Our trosse has a 12" long, 2" wide blade that will take and keep a razor edge. Both it and the small knife are made of high carbon steel, as is the fork. Furniture is steel, while the grip is polished buffalo horn. Made by **Windlass Steelcrafts®**.

#401720...\$160 ✂ (Sharpening done on main blade only.)

Overall 17" • Blade 12" long, 2" wide, 3/16" thick • Wt.-1 lb. 8 oz.

Universal Sword Hanger

The perfect display option for most of our swords, this sword hanger is made from polished steel and has an adjustable bracket. On top is a hole for a nail or screw. Once you hang the sword, the hanger practically disappears taking nothing away from your beautiful edged weapon collection. #801586...\$12

3 or more \$10 each



(A)



(B)

Steel Shields

Made by **Windlass Steelcrafts®** of 18 gauge steel with leather grips. Minor assembly required. **\$90 Each**

(A) Buckler-the buckler could be hung from the sword scabbard when two hands were needed for a pike or staff weapon. So widespread was its use, that the exercise of sword and buckler became one of the most common sports of the Renaissance. Dia.-16". Wt.-3 3/4 lbs. #800248

(B) Domed-small round shield remained popular from the 13th to the 17th century. Many soldiers preferred this to the full-size shield to be able to move more quickly. Dia.-23 1/8". Wt.-6 lbs. #800176

(\$10 addl. s/h per shield)

German Sword

Germany was known as a sword making center and German swords saw service all across Europe. It was not unusual for a French or English knight or man-at-arms to own a German sword. This hand-and-a-half design boasts carved steel furniture with a wood grip covered in leather married to a long, high carbon, well tempered blade that can be used with one or two hands with ease. Made by **Windlass Steelcrafts®**. Includes scabbard. **#501066...\$265** ✈

Overall-44 1/2" • Blade-36" long, 2" wide, 3/16" thick • Wt.-3 lbs. 8 oz.

**Circa
1400**



Royal Court Doublet

The elegance of the Renaissance lives again in this magnificent men's doublet. Manufactured of a heavy brocade fabric and sporting a row of antiqued buttons, every effort has been made to ensure the finest care in the alignment of the fabrics to give this jacket a truly royal appearance. Dry clean only. Order S, M, L or XL **#100874...\$120**




Cocoa

Period Cotton Shirt

This renaissance shirt features a stand up collar and lace up front. The sleeves are wide and roomy and end with an elastic gather. The tucks on the back yoke, sleeve tops and front yoke add to its attractiveness. Choice of **blue** and **cocoa**. 100% cotton. S, M, L or XL. Dry clean only. **#100156...\$36** XXL-\$41

Men's Pants

Long pants for men that are designed with a drawstring waist (28"-50") just like in the olden days. These pants will go with most periods. 100% cotton. Wear them loose, wrap the legs with cord or stuff them in your boots for your favorite look. One size fits most. Choose **black** or **brown**. **#100274...\$39** XXL-\$44



Knight's Chain

"Chains" or necklaces were given and worn to designate a knight or a lord of high office. Our offering is of solid nickel silver plates joined together with steel rings. Dress up your armor or lordly outfit. Chain is approx. 36" and weighs 1 lb. **#200668...\$65**

Italian Bastard Sword

**CIRCA
1400-
1450**

This beautiful and effective sword has a black blade with a deep luster, fluted black pommel and black guard and grip. This is a perfect example of a true bastard sword; the blade is the length of a one handed sword while the grip is elongated so that a second hand can be brought into play for two hand blows. The overall size allows for easy one-hand use. Made by *Windlass Steelcrafts*®. Includes leather scabbard. #500890...\$275 ✈ (\$5 add. s/h)

Overall-41½" • Blade-34" long, 1¼" wide, ⅜" thick • Wt-2½ lbs.

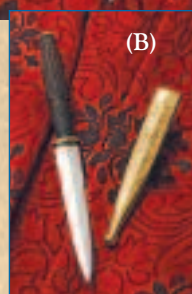


Hair & Bodice Daggers

(A) This unique dagger is fitted to an oval barrette to allow you to stylishly carry a knife at the back or side of your head! The barrette and scabbard are gold plated as are the exposed parts of the dagger. The grip is hardwood, carved much like a Scottish Dirk on this pretty little piece. Made by *Windlass Steelcrafts*®. #801298...\$65

(B) Bodice/Boot Dagger-the same pretty little dagger without the barrette to allow you to carry it in a bodice or the top of a boot. #402260...\$60

Overall-7½" • Blade-4" long, ⅝" wide, ⅜" thick • Wt.-4 oz.



Soldier's Dagger

This stands out as the sort of weapon that the hard-bitten professional fighting man would prefer, with a blade capable of taking a razor edge with a good strong sharp point. Steel guard and pommel, with a grip wrapped in leather cord, this knife is attractive, but above all – serviceable. Made by *Windlass Steelcrafts*®. Includes leather scabbard. #401760...\$90 ✈

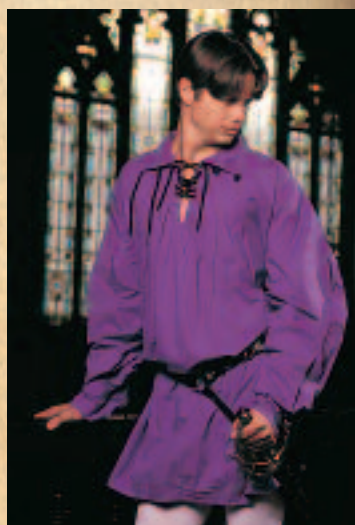
Overall-15" • Blade-10" long, 1⅜" wide, ⅜" thick • Wt-1 lb.



Pendant & Celtic Knot Bracelet

(C) **Lady of the Lake Pendant**-All of the splendor of the Arthurian tale comes alive in this stunning pewter necklace, which measures a full 2" in length. The pendant hangs from a 24" clasped leatherette black cord. #200698...\$12

(D) **Celtic Knot Bracelet**-The epitome of celtic knot work design lives in the magnificent workmanship of this pewter bracelet. Perfect for a man or woman, this elegant accent piece is antiqued, giving it the look of an age long gone. 1¼" inch wide and measures 6¼" around. Slightly adjustable. #200692...\$14



Swordsman's Shirt

Made from 100% cotton and easy to care for. **Black, white or purple.** Colors may vary slightly. Please specify M, L or XL. Poly cotton, hand wash. #100236...\$39 XXL-\$44

**CALL TOLL-FREE
1-800-883-8838**

Renaissance Short Sword

This type of sword developed from the sword length version of the Italian Cinquedeia. The blade retains the width and the large deep fullers like the earlier sword, but with a steel guard that uses a ring for added hand protection and a large steel pommel to balance the wide blade. The grip is wood with brass. This sword would be used with a round shield (see page 18), for the pastime of sword and buckler dueling popular throughout most of Europe. Made by *Windlass Steelcrafts®*. Includes scabbard. **#500860...\$215** ✂

Overall 34¼" • Blade 28" long, 3" wide, ⅜" thick • Wt.-3 lbs. 4 oz.



CIRCA 1450

Steel Vambraces

These steel lower arm guards will go with a large range of period outfits and weapons. They are nicely formed and lined with leather. Straps on the inner arm adjust to fit just about anyone. 9¼" x 6¼". Wt.-1 lb. 10 oz. **#300348...\$80/Pair**



Black Medieval Boots

Finding accurate footwear has been one of the more difficult problems to face the medieval enthusiast or reenactor. These are excellent short boots, made of a premium grade leather. Sizes 8 – 13; male whole sizes. **#200038...\$120**



Gambeson

It was always possible to drive the point of a weapon through the rings of a mail shirt or shear it with a good cut. This often drove the damaged rings deep into the wound. Even if the blow didn't cut the mail, the blunt trauma alone was enough to break bone and damage internal organs. A thick, padded garment worn under a mail shirt greatly reduced the risk of these types of injuries. Our gambeson is of a type worn from the early middle ages well on through the Renaissance. Choose M, L or XL. Hangs approx. 32" and weighs 1½ lbs. Black only. Poly cotton. Hand wash. **#100278...\$95**

KING EDWARD III FLAG

The royal standard of England beginning in the 14th century. Indoor/outdoor nylon. 3' x 5' with metal grommets. Flag is double sided. **#801428...\$12**





**CIRCA
1350**

Brass Hilted Rondel

The Rondel Dagger was around for a long period of time and took many forms, from utilitarian to pure combat weapon, like this one. The grip is long enough to be grasped with a mail mitten or gauntlets, and the round guard and butt lock it securely in the hand. Many Rondels had plain dagger blades, but this compact type has a thick, strong-fullered blade that ends with a reinforced tip for punching through mail and finding the small, unprotected areas of armor. Made by **Windlass Steelcrafts®**. Scabbard included. **#401908...\$110** ✂

Overall-18" • Blade-12½" long, 1¼" wide, ¼" thick • Wt-1 lb. 2 oz.

Leather Brigandine

Even with a gambeson and a mail shirt, a fighter was not as well protected as a warrior with plate armor. However, plate armor could be expensive. The brigandine filled this gap very well. This suede leather garment has small steel plates riveted between the outer shell and the lining. This kind of construction made it easy enough for a soldier to make and repair his own armor without needing the high skill of an armorer. Weighing only 6 lbs., it is very flexible and does not restrict movement. Commonly worn over a gambeson and mail shirt, it was not long before this form of protection was in wide use with fighters from knight to archer. Our version has three buckles on each side for great versatility in fit. Approx. 32" long. Choose black or brown leather shell. S/M (fits chest size to 38") or L/XL (fits chest size to 48"). **#100402...\$170**



Bruce Brookhart

As head of Development and Design, Bruce Brookhart's accurate edged weapons replicas and imaginative designs have appeared in our catalog for over 15 years. Not only has Bruce visited and photographed many of the major arms collections, both in the USA and Europe, he has had the good fortune to work closely over the years with Mr. E. Oakeshott and Mr. H. Reinhardt.

Calf Boot

Attractive leather short boot with three buckle design. Can be folded over to ankle length or left up for a rare mid-calf look. Although not specific to any time period, they easily could have seen use during the Renaissance. Worn by both men and women. Leather sole. Men's whole sizes only 6-13. **#200492...\$60**



REENACTORS & STAGE FIGHTERS
VISIT OUR WEBSITE:
WWW.MUSEUMREPLICAS.COM
FOR OUR REENACTOR/THEATRICAL SWORDS

Oakeshott Type IV

This medieval arming, or short sword features a blade that swells slightly at the top to put more weight in the hand to improve its cut and thrust capabilities, making for a very fast sword. The furniture is steel and the grip is wood covered in leather. A very effective and important sword. Includes matching scabbard. Made by *Windlass Steelcrafts*®. #500972...\$245 ✂

Overall-33³/₈" • Blade-26¹/₄" long, 2³/₄" wide, ³/₁₆" thick • Wt.-2 lbs. 14 oz.
Can be seen in E. Oakeshott's book "Records Of The Medieval Sword".

**CIRCA
1300**



Horn Rondel Dagger

The Rondel Dagger was significantly popular, as witnessed by the frequency with which it appears on grave monuments. This replica is unusual because it has a full profile tang with polished buffalo horn scales and a mushroom shaped pommel. The blade is high carbon steel and comes to a strong point. Fully tempered. Made by *Windlass Steelcrafts*®. Includes scabbard. #402258...\$95 ✂

Overall 17¹/₂" • Blade 12" long, 1¹/₄" wide, ³/₁₆" thick • Wt.-1 lb. 2 oz.

FREE DVD Offer

When you purchase any of the *Windlass Steelcrafts* swords or daggers from our catalog, you will receive our exciting "Forged in the Heat of Battle" DVD absolutely free. This professional 13 minute film shows a brief history of the sword, the step-by-step forging and manufacturing process which goes into the *Windlass* blades, plus an expert cutting demonstration. A truly entertaining presentation, which will allow you to see firsthand the overall strength and ability which every one of our swords possess. While Supplies Last



Arming Cap

Worn under a helmet or coif, the arming cap offered extra cushioning for the head. Although the original cloth caps were widely stuffed with rags and straw, our poly/cotton cap is thickly lined with fiber fill. Machine washable. Quilted construction with a tie cord. S (for 21" head circumference), M (22"), L (23") and XL (24"). #200174...\$30

English War Hat

This aged 18 gauge steel helmet is 1 leather lined and has an adjustable liner and chin strap. *Stand included.* #300372...Reg. \$160...Closeout \$125



Infantry Gambeson

This heavy-duty gambeson was worn by knights and men-at-arms alike. The heavy quilted 100% cotton body makes it a great addition over a shirt of mail. The lacing up the one side, along the torso and also the neck, gives this garment a fitted look, while the high collar adds the needed extra protection. Dry clean. **Burgundy** only. Order S/M or L/XL. #100704...\$55

Shown with the *Locksley Gambeson* – available on pg 40.



Leather Gauntlets

The long-cuff construction of these supple, leather gauntlets has been seen throughout the ages. Approx. 15" long. Wt. 8 oz. The palm, hand and fingers are made of soft, pliable leather. So supple they give you the kind of flexibility you expect from driving gloves. Dress black. Please specify S, M, L or XL. #200376...\$42/pair XXL-\$47/pair



Renaissance Ensemble

(A) Late Renaissance Shirt-A favorite from the Renaissance through the mid-18th century. Loose fitting design allowed freedom of movement. Sleeves tie at the cuff. Four eyelets on sides of the V-neck, tie closes with a leather thong. Cotton blend. Spice brown (shown), red, black, or white. S, M, L or XL. Hand wash or dry clean only. #100342...\$39 XXL-\$44

(B) European Baldric-While much of the weight of the sword rested on the hip, the shoulder strap provided extra support from the opposite side of the body. This added balance and comfort. Can be worn with any sword. Fits any period. Frog is left open so you can stitch it closed to fit the sword of your choice. Oil tanned leather. \$59 Each

Brown With Brass Buckle...

Right-handed-#200326 • Left-handed-#200380

Black With Silver Buckle...

Right-handed-#200292 • Left-handed-#200424

(C) Black Knee Breeches-Are perfect for most Renaissance outfits – all the way through the 17th century. The legs lace on your calves just below the knee. The waist has a tie strap. Made of a cotton blend. Hand wash or dry clean. One size fits most. Poly cotton, hand wash. #100268...\$42 XXL-\$47

Shirt & Knee Breeches SET-\$75 XXL-\$79



Streamlined Rapier Carrier & Frogs

(D) The rapier scabbard fits through leather loops in the carrier at the best angle for quick access. Two-piece design means that no matter who wears the belt, the carrier still hangs at the proper angle. Wt.-1 lb. \$80 Each

Left hand...#200014 • Right hand...#200456

Hand crafted from the finest quality leather. Black w/nickel plated steel.

(E) Back Hanger-#200068...\$22

(F) Sword Hanger-#200012...\$15

(G) Dagger Hanger-#200044...\$12



Thigh High Round Toe Boots

Hand made and crafted from supple 4-ounce leather with leather soles and heels, these boots have been copied from the 15th-17th centuries. High boots were valued as additional protection against a sword cut. They wear well in the folded over, calf-high look, making them perfect for many styles of renaissance and medieval attire. Men's whole sizes 8-13, black leather only. Two buckles (concealed by rolled-over flap in photo) allow you to tighten the boot legs. 30 3/4" high before folding. 5 3/4" brown cuff. #100168...\$175



CALL TOLL-FREE 1-800-883-8838



Highwayman Coat

Historical literature abounds with tales of robbers and thieves preying upon rich travelers. The design of this coat reflects the nature of these rogues. This full-length coat is made of durable black denim and is designed with a generous split in the back, as well as the sides, for easy movement. A stylish wide period cuff with braid and buttons adorn the sleeves, while the laced double collar can be worn either up for disguise or down for city traveling. Black only. S/M or L/XL. Dry clean only. #100530...\$99 XXL-\$104

Tricorn Hat-Top grain leather with a dark brown finish. S/M (8") or L/XL (10"). #200550...\$75

Clothing Guarantee

Museum Replicas fully warrants all of our clothing articles against any defects in materials or workmanship. Please inspect your garment upon arrival for fit and quality. If it does not meet your expectations, we will happily refund your money or exchange merchandise within **30 days of the ship date**. We recommend **dry cleaning** only for years of service on our garments. Museum Replicas Limited will not give a refund or exchange an article of clothing that has been worn, soiled, washed or damaged during use. Please examine your garment before performing any of these procedures.

Gothic Ensemble

Coat-This beautiful coat and vest brings back images of vampires and

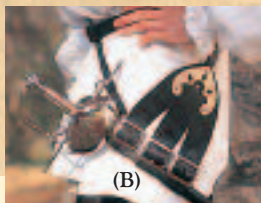
monster hunters who supposedly walked the darkened cities of eastern Europe. The long coat has broad shoulders and is meant to be worn open. The coat has been accented with gold and black trim, while twelve hand-made frogs adorn the front. 100% rayon. Dry clean only. Order S/M or L/XL #100940...\$95

Noble's Shirt-S, M, L or XL. Choose purple, black or white. Cotton blend fabric. See pg 8 for full description. #100396...\$60 XXL-\$65

Vest-Order S/M or L/XL. See pg. 12 for full description. #100942...\$79

Velvet Pants-S/M or L/XL. See pg. 52 for full description. #100836...\$43

Black Boots-Made of premium grade leather with a hard leather sole and 1" heel for durability. Men's whole sizes 5-13. Full length side zipper allows for easy on-and-off wear. Four adjustable decorative straps. Black only. 19½" tall, 17½" calf circumference. #200558...Reg. \$175...Closeout \$125



Belts for Rapiers & Swords

Made of heavy leather for years of wear. Fits size large (40" long); you can cut for smaller sizes. Black only; steel hardware. Will accommodate scabbards 2" wide and larger.

(A) Split Strap-For the swordsman inclined toward understatement. #200358...\$58

(B) Three Forked-Trimmed with metal for a bit of dash. Three large adjustable straps allow for a variety of sword widths. #200308...\$66

(C) Double Strap-Straps can be independently moved along scabbard to angle sword to suit you best. Chicago screws allow loops to adjust to fit rapier sword blades. #200258...\$54



Fair Maiden's Dress



This colorful 16th century styled dress features coordinating front trim and reinforced boning in the front bodice for extra strong tight lacing. We have paired this piece with the Celtic Chemise (sold separately), however it will look lovely with any of our other chemises. Three colors to choose from: **blue, green and red.** 100% cotton. Sizes S/M or L/XL. Dry clean only. #100510...\$65 XXL-\$69



Celtic Chemise

The chemise was worn under all medieval ladies' clothing. It was often slept in as well. Our well-made chemise has very long sleeves and ties at the shoulders. A very special look for your favorite gown. S/M or L/XL. Hand wash. #100508...\$49 XXL-\$54



Gypsy Princess

This lavish ensemble is sure to get you noticed at any event. The main ensemble consists of our full Gypsy skirt, a matching pair of pants and a short open vest. Both the skirt & pants have elastic waists for easy fit. 100% cotton. Order S/M or L/XL. #100890...\$125

Shown with our Peasant Girl Shirt-White only. S, M, L, or XL. #100784...\$39 XXL...\$44



Swordswoman's Shirt

Loose, flowing sleeves allow for excellent freedom of movement, while the long, tapered cuffs are proportioned for a woman's wrist. The shirt is long enough to be tucked in or worn belted. The cuffs are laced to assure a close fit. Made of a poly/cotton blend. Choice of **white or black.** Available in S(8-12) and M(14-18). Hand wash. #100432...\$39 XXL-\$44

Celtic Cross

Hand made from .999 fine silver (*that's pure silver*) with a hammered finish. No two alike. Includes the traditional, mystical circle around the center of the cross. Worn by Celts from 500 A.D. on, as indicated by drawings and manuscript illuminations, personal jewelry unearthed by archaeologists, and stone monuments still standing. It makes a strikingly attractive **pendant for ladies or gentlemen.** 1 7/8" x 7/8". Comes with 18" long, silver box chain necklace. #200482...\$42



Lady Jane Dress

This elegant gown could easily be seen traversing the royal court of King Henry VIII. The rich burgundy cotton velvet body gives a form-fitted appearance and is exquisitely accented with a hand beaded gold trim. The sleeves have a sheer soft netting and are finished with matching burgundy bows. Dry clean only. Order S, M, L or XL.

#100898...\$120

Lady Jane Shoe

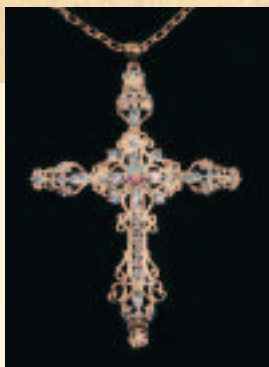


This will be one of the most versatile and comfortable pair of shoes in your ensemble. Solid silk construction, rubber soles. Adjustable straps with a nickel plated buckle. Black only. Women's whole sizes 5-10. #100882...\$15



Queen's Cross

A magnificent addition to your royal ensemble. This stunning cross measures a full 4 1/2" x 3 3/4" and is encrusted with 60 aquamarine Austrian crystals, which have a multi-color sparkle. Highly detailed filigree work and a 24" linked chain with clasp completes the piece. #200870...\$25



Renaissance Jeweled Locket

From the master artisans at Sorrelli Jewelry comes this hand-made masterpiece. Lavishly encrusted with numerous Swarovski Crystals. This locket will hold your most precious keepsake near. #200970...\$189

Capes

Made from 100% cotton twill and measure 50" long, and have a generous hood (ties hold the hood together) that protects you from wind. Mystery and elegance captured in one dazzling garment. Dry clean.

(A) **Deluxe**-undercape has generously cut armholes for added flexibility of motion. The capelet adds style and flair, and keeps wind from sneaking through the armholes. Black, gray or hunter green. #100344...\$104

(B) **Traditional**-over the shoulder without arm holes. Black or gray. #100124...\$94

Celtic Hand Mirror

M'lady will be surrounded by beauty with this elegant hand mirror adorned with celtic knotwork. This resin cast mirror has been metalized to give it the look and feel of antique bronze and contains a real glass mirror. Measures 9 1/2" x 5 1/2". #801580...\$22



VISIT OUR WEBSITE:

WWW.MUSEUMREPLICAS.COM



(B)



(A)



Berengaria Gown

Just like the medieval princess from which this dress draws its name, you will feel like you are at the royal court wearing this lovely gown. Made of a rich burgundy cotton velvet, this full gown's sleeves and front are dressed with rich gold material. Both the sleeves and waistline are accented with a trim of hand-sewn beadwork, making this one of the most beautiful period gowns we have ever offered. Dry clean only. Order S, M, L or XL #100904...\$129

Chemise

Our new delicate lace trimmed chemise in white is a very feminine undergarment that's light and airy. The sleeve edges and neckline have a small white lace trim. The bottom of the chemise is adorned with a white flower trim that adds to the charm. This can be worn under many of our gowns or surcoats. Hand wash cold. S/M or L/XL. #100302...\$45
XXL...\$50



Bodice / Boot Dagger

This pretty little dagger is just right for m'lady's bodice or the top of a boot. Brass parts are gold plated while the grip is polished camel bone. This handy little piece will take a razor edge. Scabbard with gold plated throat and tip included. Made by **Windlass Steelcrafts®**. #401792...\$85

Overall 9 1/2"

Blade 5 1/4" x 5/8" x 3/16"

Wt.-3 oz.



Celtic Locket

Perfect for discreetly carrying a keepsake from your love. This gorgeous, sterling silver locket has pierced Celtic knotwork front and back. Opens up to conceal your small treasure. Purple stone in center. Includes 18" sterling silver chain. 1 1/4" tall, 7/8" wide, 1/2" deep. #200194...\$40



Scarlet Dream

This elegant gown is made of a heavy red cotton velvet, the dress has full bell sleeves and a generous full skirt. Matching handmade frogs compliment the lace-up front. Back laces also. Sizes S, M, L or XL. Dry clean only. #100608...\$90 XXL...\$95



Princess Tiara

With over 100 stunning artificial diamonds, this beautiful tiara is certain to complete any royal ensemble. Complete with side combs for a secure fit. #200950...\$39



Renaissance Overdress

A truly wonderful, lightweight overdress, which can be worn with any chemise. This long period dress can be worn with or without the detachable sleeves, giving you a multitude of styling options. The top lace-up bodice has been re-enforced and a coordinating gold trim accents the front and sleeves. An absolute stunning piece, when worn with our gold Celtic chemise. Choose from: blue, red or green. 100% Rayon. Dry clean only. Sizes S/M or L/XL. #100956...\$65 XXL-\$70

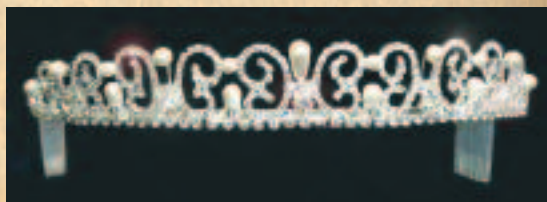
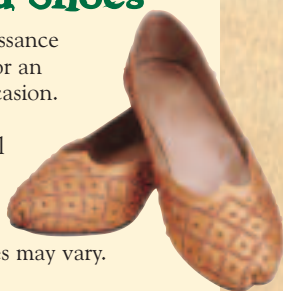


Royal Gold Chemise

As an alternative to our standard white chemise, this beautiful golden chemise will totally enhance and change the look of any dress worn with it. The extra long sleeves pulled up and are tied at the shoulders, so a custom fit is easily acquired. The gold-on-gold floral pattern makes this the perfect addition to any period ensemble. 100% rayon. Dry clean only. S/M or L/XL. #100944...\$79

Divit Toed Shoes

A must for any Renaissance wardrobe or perfect for an evening or special occasion. Embroidered design has beads on beautiful bronze satin material. Leather sole with satin lining. Whole sizes only 6-11. Shades may vary. #100422...\$30



Pearl Spray Tiara

The elegance of artificial pearls and diamonds come together in this beautiful tiara perfect for the Renaissance Faire or any event. Complete with side combs for a secure fit. #200952...\$44



Celtic Jeweled Pendant

A stunning piece of sterling silver celtic knotwork, interlacing a circle embedded with artificial diamonds. This delicate 1" piece comes with an 18" silver snake chain with clasp for easy wearing. #200740...\$40

Velvet Long Cape

Hand made black cotton velvet with an exquisite satin lining (please specify **purple**, **red** or **white**) makes mantle and cape reversible for festive occasions. Sleek and stealthy, this hooded cape also has arm openings to give you two ways to wear it. 45 1/2" long from neck to hem. Hand crafted. One size fits most. Dry clean only. #100258...\$149



Royal Ball Gown

No event was more grand than the royal ball and this dress is definitely the ultimate statement of royalty. The soft black and gold brocade fabric is elegantly accented with rich gold trim and flowing sleeves, while the front skirt panel and inner sleeve match in a complimentary diamond pattern. A period lace up back allows for a fine fit.

Dry clean only. Order S, M, L or XL.
#100886...\$265



Fleur-de-Lis Dress

The back of this dress laces up and has a hidden modesty panel, which leaves breathing room after a little too much feasting. We have chosen the Celtic Chemise for this dress (see pg 26), however, this dress would still look wonderful paired with any of our chemises. **Burgandy** or **midnight blue** with gold accents. S/M or L/XL. 100% poly cotton. Dry clean. #100390...\$59
XXL-\$64

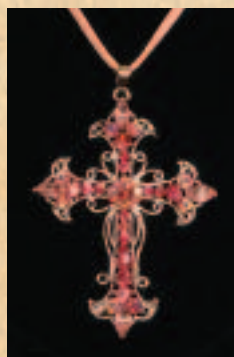
Black Magic

Very elegant with many period outfits. Dress these up or down; the ornate black beads on black satin still make a lovely statement. Leather soles. Whole sizes 6-11.
#100030...\$30



Fleur-de-Lis Cross

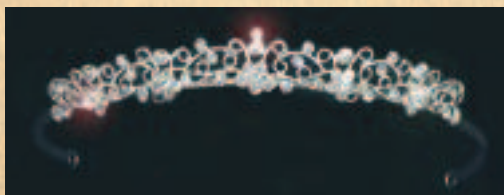
A great piece of jewelry for almost any ensemble. Deep pink Austrian crystals make this dazzling cross a true work of beauty. Measures 3" x 2 1/4" and comes with a 16" pink leather cord with adjustable clasp.
#200872...\$18



Iron Scroll Tiara

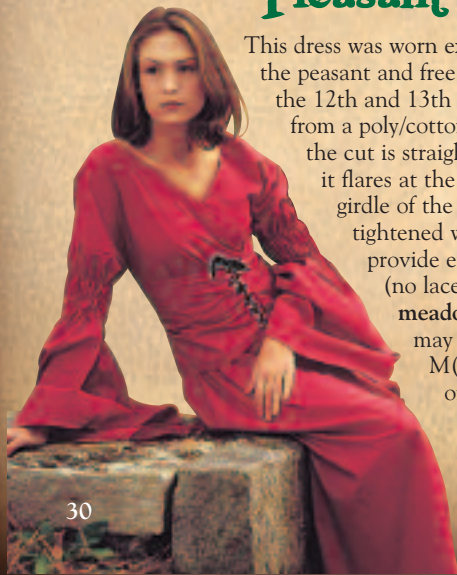


This simple, delicate tiara has just the right amount of artificial diamonds to turn any head. A great accent piece for a number of outfits. #200954...\$15



Pleasant Peasant

This dress was worn extensively by both the peasant and free class women during the 12th and 13th centuries. It's made from a poly/cotton blend. Although the cut is straight down to the waist, it flares at the bottom. Includes a girdle of the same fabric that is tightened with black cording to provide emphasis to the waist (no lace). Choose **berry** or **meadow green**. Colors may vary slightly. S(6-8), M(10-12), L(14-16) or XL(18-20). Hand wash or dry clean only.
#100056...\$59



Lady's Boots

These boots come to below the knee and lace up for a good firm fit and have just enough heel for a little elegance without compromising the good footing that the swordswoman demands. 20" boot length. 1 1/2" heel. Black only. Whole sizes 6-12.
#100088...\$150



Oakeshott Type XIIA

This sword is a good example of the kind used by civilians. Lighter than a battle sword, it excelled in cutting during unarmored combat. The grip is long for two-hand use with a row of studs under the fine leather for a very firm hold. The pommel (type T2) and guard (style 8) are bright brass for easy care. High carbon steel blade is thin and tempered to a good spring. Comes with leather scabbard. Made by *Windlass Steelcrafts*®. #500998...\$245 ✂

Overall-45 1/4" • Blade-36" long, 2" wide, 3/16" thick • Wt.-2 lbs. 10 oz.

**CIRCA
1380**

**CIRCA
1500**

**CIRCA
1450**



Battle Axe & War Hammers

Made by *Windlass Steelcrafts*®.

(A) 16th Century Italian Battle Axe-By the 16th century the battle axe became a highly decorated weapon, without affecting the efficiency of the weapon. This axe has a strong hardened steel blade with cutouts. The back spike is gracefully curved but has the proper angle to deliver the maximum force when the spike is used. Butt cap is steel. The shaft is hardwood, studded with brass tacks. Overall length 28", a great length for one handed use. #600059...\$130

(B) Late War Axe-The shaft is long to make it possible to easily strike a man on horseback or on the ground. The small wedge shaped axehead could split armor and the long deadly spike could pierce either a helmet or a breastplate. An interesting weapon to add to your collection. Long wood shaft with leather grip. #600644...Reg. \$110...Closeout \$90

Overall-28 1/2" • Head 2 3/8" x 10" • Wt.-2 lbs

(C) New War Hammer-By the mid 1400's armor had developed to the point that it was almost impervious to a sword blow. That's when the knight or man-at-arms would reach for a good solid war hammer. With a few sound blows armor could be damaged and crushed, sorely affecting movement and the ability to defend one's self. This hammer has a large end spike as well as small spikes on the sides. The back spike is thick and able to punch through armor. The head is attached with steel langets to the hardwood shaft which is also studded for a secure grip. #600756...\$125

Overall-26 1/2" • Head-1 1/4" x 5" • Wt.-2 lbs. 4 oz.

CALL TOLL FREE: 1-800-883-8838
VISIT OUR WEBSITE: WWW.MUSEUMREPLICAS.COM

Sword With Crosses

**Circa
1430**



This late cruciform sword bears five bold crosses on its blade. Legend tells us that the heroine Joan Of Arc bore such a sword during her campaigns in the Hundred Years Wars between England and France. This sword would have made an inspiring sight as it was carried forward at the head of an army. The parts are steel and the grip is wrapped in leather cord. Fully tempered high carbon blade. Made by *Windlass Steelcrafts*®. Includes scabbard. #501098...\$265 ✂

Overall-38½" • Blade-32" long, 2" wide, 3/16" thick • Wt.-3 lbs. 6 oz.



**Circa
1100-
1500**

Feasting Dagger

This handy dagger is just right for eating. Knives and hands were used at table in equal proportions for most of Medieval history. This basic dagger type was equally used by commoner and noble alike. It also makes for a perfect every day carry, all around dagger with brass parts and polished hardwood grip. Made by *Windlass Steelcrafts*®. Includes scabbard. #402630...\$65 ✂

Overall-14" • Blade-7½" long, 2" wide, 1/8" thick • Wt.-10 oz.

Knightly Chain



Worn by knights to show they were part of a society known as the Order of Chivalry. This exquisite chain is made of fully-sculpted links and measures a full 36" in circumference. Antique satin brass finish. #200956...\$60



Celtic Castle Box

A piece reminiscent of the time of King Arthur, this cold-cast porcelain box is richly adorned with Celtic crosses and knotwork and given a darkened gray stone finish. Felt lined. 3" X 3" X 5". #801628...\$14



Fluer-de-Lis Flag

While it has appeared on countless European coats of arms and flags over the centuries, the fleur-de-lis is particularly associated with the French monarchy. Double sided, indoor/outdoor nylon. 3' x 5' with metal grommets. #801432...\$12



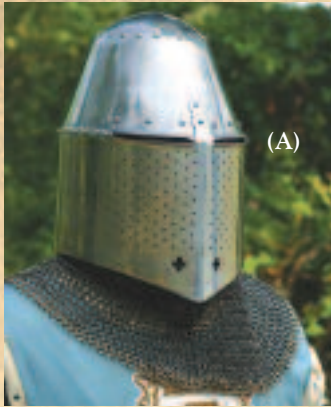
CALL TOLL-FREE 1-800-883-8838

English Two-Hand Sword

It must have been a fearsome sight having this huge sword coming at you across the battlefield. This particular sword is a copy of number IV-1787 in the Royal Armouries in England. Though big, it is beautifully balanced for two handed use, allowing for sweeping cuts, and it must have swept away all in its path. The long grip is wood covered in leather and the parts are steel, making for a truly impressive sword. Made by **Windlass Steelcrafts®**. Includes scabbard. **#501060...\$285** ✂

Overall-57½" • Blade-44" long, 2½" wide, ⅜" thick • Wt.-4 lbs. 2 oz.

**Circa
1450**



(A)



(B)

Great Helm & Matching Bascinet

These two beautiful helmets were worn in conjunction to give superior protection to the head of an armored knight.

(A) Great Helm-There are examples of this type of Great Helm in the Royal Armoury at Leeds and the Royal Scottish Museum in Edinburgh, as well as on many grave effigies throughout Europe. In use from about 1350 forward. Normally worn over another helmet. **#300404...\$245**

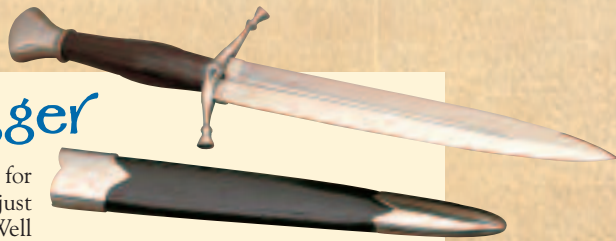
(B) Bascinet-Although not displayed in conjunction with the helmets at the above museums, it is present on almost all of the grave effigies. Worn under the Great Helm, it is made for superior head protection and could be worn alone for foot combat. Adjustable liner. **#300406...\$245**

Great Helm & Matching Bascinet - Set \$441

Belt Dagger

This dagger is a nice size for everyday chores and is just right for the feast table. Well balanced, polished hardwood grip with steel guard and pommel. Black leather scabbard with steel throat and tip. Made from fully tempered high carbon steel by **Windlass Steelcrafts®**. **#401386...\$85** ✂

Overall-13¼" • Blade-8" x 1" x ⅜" • Wt-10 oz.



CIRCA 1390

Poignard

A forerunner of many long parrying daggers of later years, its long reach made it very effective. It saw much

use in its own day as a backup weapon on the battlefield and was carried at court when swords were forbidden, for they made formidable weapons in the hands of an expert. Includes scabbard. Made by **Windlass Steelcrafts®**. **#401726...\$95** ✂

Overall-20½" • Blade 14¼" long, 1⅜" wide, ⅜" thick • Wt.-1 lb. 4 oz.



German Gothic Armor

(A)

As seen in the History Channel series Conquest



The last half of the 15th Century saw armor reach its apex of beauty, in both form and function. This type of armor would have been a common sight on the battlefields of the War of the Roses. Mail Shirt not included.

(A) Salade With Bevor-Suitable for foot or mounted combat, this two-tiered helmet was prized by both knights and men-at-arms.

The Salade (or English Sallet), which possibly originated in France or Burgundy, was constructed with a tail to protect the back of the head and neck. The version we've copied sits flush on a bevor, which protects the chin and throat. The original is believed to be English and dates from about 1480. Features the moveable visor and a bevor with falling buff like the original. Forged of 18 gauge steel, both the Salade and bevor are fully lined and wearable. **#300148...\$235**

(B) Pauldrons-Right and left shoulder protection. Beautifully fluted and with open work. **#300224...\$150**

(C) Rerebrace, Vambrace, Couter-Upper and lower arm sections joined by the elbow coup. Right and left sides are open on the inside to fit a large range of arm sizes. Also, has some lateral adjustment. **#300222...\$150**

(D) Mitten Gauntlets-These beautifully worked gauntlets protect the wrist and complete hand when closed around a weapon. Mitten form fits a large range of hand sizes. **#300226...\$175**

(E) Cuirass With Tassets-This consists of the breast and back plates with their fauld and tassets (upper thigh protection). Handcrafted of 18 gauge steel. Approx. weight-17 lbs. Fits up to 46" chest. Waist 38". **#300100...Reg. \$525...Catalog Special \$450** (\$15 addl. s/h)

(F) Gothic Leg Armor-To finish the armor, fully articulated legs with the same fine details throughout. This type of leg armor ends a little past mid shin and is meant to be worn with heavy leather boots. **#300412...\$365**

(G) Pole Axe-With a long history of use, the pole axe was very popular in the lists, with the winner being decided by the number of blows fairly struck. It was also quite popular for use on the field of battle. With a good sharp point it could be used as a short spear, the back or spike could be used to pierce armor, and the axe head itself was quite lethal. Superb copy, with a high carbon blade and langets to protect the shaft. A magnificent example of a polearm. Made by **Windlass Steelcrafts®. #600640...\$145** (\$5 addl. s/h).

Overall 68" • Head Spike-10" wide • Wt.-4 lbs. 12 oz.



Mail Armor

From the Celts of 300 B.C. to 18th century Asia, mail was one of the most prized items a warrior could own. The "Foe of Swords" probably derived the name "mail" from the latin "Macula" meaning net. Made from mild steel similar to the originals; because of the large surface area to volume of each link, this armor was highly susceptible to rust. In fact, most mail was allowed to darken and was then oiled. Express delivery not available on mail.

With history and your needs in mind, we present to you six choices of mail, more than you'll find from any other source. 16 gauge links are combined in the "International" pattern - 4 links through a 5th - common to all European mail. Coifs can be worn with or without a helmet. Outer link diameter of each link is about $\frac{7}{16}$ ", inner link dia. is about $\frac{3}{8}$ ". Mail shirts fit up to a 54" chest. 33" long shirt and sleeves are approx. 18" and hang to just below the elbows on average-height warriors and weigh 23 lbs. Coif weighs 5 lbs. 8 oz. (Except Flattened Steel and Aluminum Mail). Made by **Windlass Steelcrafts®**.

Butted Steel-we recommend keeping this mail oiled when not in use.

(A) Coif-#300188...\$95 • (B) Shirt-#300170...\$250

Catalog Special Butted Mail Shirt (A) & Coif (B)...\$299

Mail Shirts \$6 each addl. s/h • No Express Delivery

**ALL HISTORICAL ARMOR IS FAITHFULLY COPIED FROM
EXAMPLES IN MUSEUMS & PRIVATE COLLECTIONS.**



Blackened Steel

Intimidating butted armor, blackened for moisture resistance. Reminiscent of the Black Prince, who purposefully let his mail darken to a blackish hue.

Coif-#300076...\$120

Shirt-#300058...\$310

Plated Brass

Steel rings plated with brass for long lasting good looks.

Coif-#300122...\$110

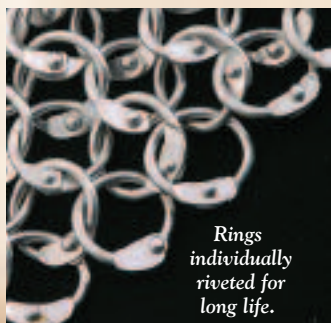
Shirt-#300102...\$275



Riveted Steel

The most sought after and difficult mail to make. End of each mild steel link is flattened and riveted. Prized for its durability. Dipped in zinc to prevent rust.

Coif-#300126...\$245 • Shirt-#300108...\$695



Rings
individually
riveted for
long life.

Hero's Mail

The smaller and finer worked the rings are, the more protection. We are proud to offer the peak of the armorer's art as it pertains to mail. Butted, 17 gauge steel rings are only $\frac{3}{16}$ " round providing unsurpassed protection. Incredibly dense, the rings provide the ultimate defense against whatever comes your way.

Coif-one size fits most. #300088...\$135

Shirt-as a result of the number of links needed, this is not lightweight. Approx. 31" long. 55" chest. 31 $\frac{1}{2}$ lbs. #300042...\$325



Riveted Aluminum

Perfect for reenactors or stage performers who need authentic looks, but don't need authentic weight! This extremely light mail utilizes aluminum rings, riveted for durability. Even if you wear it all day long you'll hardly notice the weight. Outer diameter of rings is about $\frac{1}{2}$ ".

Coif-weighs only 2 lbs. #300150...\$180

Shirt-weighs only 7 lbs. #300138...\$545

Verneuil

We have named this sword for the battle that ranks second only to Agincourt as the most decisive victory won by the English in the 15th century phase of the Hundred Years War. This beautifully balanced and fast sword is a hand-and-a-half type on which the steel parts have been given a deep antiqued bronze finish. The grip is wood covered by rich leather. Truly a fine weapon that would have been used by the French or English in that fierce battle. Includes matching scabbard. Made by *Windlass Steelcrafts*®. #500974...\$285 ✂

Overall-44¼" • Blade-36" long, 1¾" wide, ⅜" thick • Wt.-2 lbs. 10 oz.



**CIRCA
1150**

Medieval Dagger

This type of dagger was used across Europe and the Holyland and would be at home on the belt of a crusader. Its simple design is ideal for use with a mail mitt because the opposing curves of the antiqued bronze pommel and guard lock the hand into place nicely. The wood grip is wrapped in leather cord for a good hold while the high carbon well tempered blade comes to a strong point. Made by *Windlass Steelcrafts*®. Includes scabbard. #402536...\$95 ✂

Overall-17" • Blade-12" long, 1¼" wide, ⅜" thick • Wt.-1 lb.

Medieval Practice Weapons

A wooden sword or "waster" allowed a warrior to practice full combat safely and economically while preserving his precious steel for the real battle to come. Fully seasoned and hand crafted in solid hardwood, with contrasting wood guard and pommel. Each can take the abuse of sparring and reenacting, even edge-to-edge. (*Keep in mind, however, that wood can break along the grain.*) The designs represent edged weapons common from the 12th to 15th centuries.

(A) **Two Hand**-48¼" overall. 37" blade, 2" wide.
Wt. 1 lb. 4 oz. #600598...\$45

(B) **One Hand**-38¼" overall. 31¼" blade, 2" wide.
Wt. 1 lb. #600600...\$39

(C) **Dagger**-17¼" overall. 11½" blade, 1½" wide.
Wt. 5 oz. #600602...\$29



Partake in period style at your next feast - see pg 58 for hand forged eating utensils.



Mail Gauntlets

To protect the back of the hand, we have added mail on our black leather gauntlets and also placed slightly cupped steel lames all around the cuff. These offer good protection to the hand, wrist and lower arm from a sword slash or draw cut. Historically correct from the Early Middle Ages well into the Renaissance. XS, S, M, L or XL. #300008...\$75

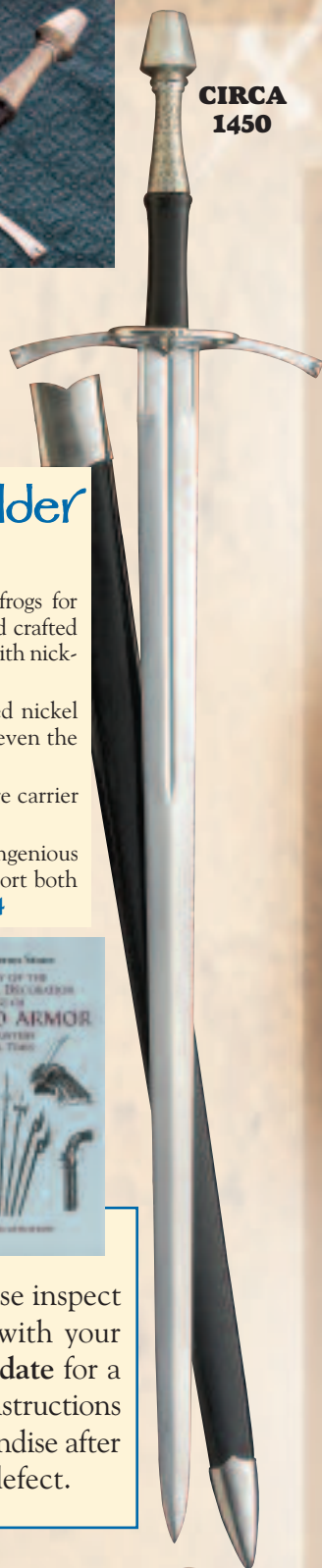
15th Century Longsword

The longsword, often called a hand-and-half, saw a great deal of service as a weapon of war, but was also employed a great deal as a civilian weapon of self-defense. A good serviceable point allowed it to be used for thrusting, and a medium weight allowed it to be used easily and carried with equal ease. But when needed, it could be gripped with both hands for a very powerful cut. Pommel and guard are steel. Grip is wood wrapped with leather and wire. A beautiful and very functional sword. Made by **Windlass Steelcrafts®**. Includes scabbard. **#500800...\$245** (\$5 addl. s/h)

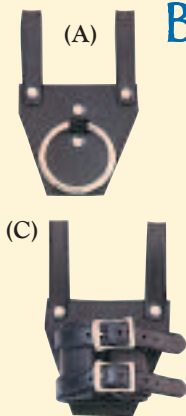
Overall-45½" • Blade-36½" long, 1 13/16" wide, 3/16" thick • Wt.-3 lbs. 4 oz.



**CIRCA
1450**



Black Leather Axe Holder & Frogs



Designed to fit most any belt, our frogs for axe, broadsword and dagger are hand crafted of durable, full grain leather replete with nickel plated, metal studs. **\$15 Each**

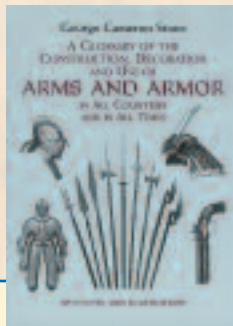
(A) Axe Holder-boasts an oversized nickel plated ring for cradling the head of even the heaviest axe. **#200028**

(B) Dagger Frog-a jaunty, but secure carrier for dagger or dirk. **#200276**

(C) Broadsword Frog-with its ingenious dual strap design, this frog will support both broadsword and scabbard. **#200084**

Stone's Classic Work on Arms & Armor

Widely considered to be the definitive work on the subject of arms & armor. Long out of print, we are proud to offer this indispensable resource. Originally published in 1934, it has lost none of its impact. Over 4,500 photographs and drawings. 704 pages. 8½" x 11". Softcover. **#800374...\$40**



Guarantee

We guarantee any product you purchase from MRL. Please inspect your purchase upon arrival. If an item does not meet with your approval, just return it to us within **30 days of the ship date** for a full refund or exchange, whichever you prefer. Follow the instructions on back of packing slip. If you have a problem with merchandise after 30 days, we will repair or replace due to manufacturer's defect.

Bar Mace



The remains of a mace of this type were found in the River Thames, but they were in use all across Europe. Little finesse was needed for this brutal mace, and a warrior strong enough to wield it could crush helms and break swords with the heavy blows it could deliver. Made from four bars of steel with a wood and leather grip and a large steel pommel to help balance it, this is indeed an awesome weapon. Made by **Windlass Steelcrafts®**. **#600652...\$130** (\$5 addl s/h)

Overall-28½" • Blade-20" x 2" x 3/16" • Wt.-4 lbs. 8 oz.

**CIRCA
1300**

Battle Of Nicopolis Sword

(A) This is the type of sword that would be raised to defend against the Turks. The eastern kingdom of Hungary was often a battlefield that kept the Turks away from western Europe. This very fast cut-and-thrust sword has a faceted pommel and simple guard, both of steel. The beautiful grip is hardwood with a raised center ridge and the upper half is wrapped in leather making for a very positive grip. Includes scabbard. Made by *Windlass Steelcrafts*®. #501022...\$235 ✂

Overall-38 1/2" • Blade-32" long, 1 1/2" wide, 3/16" thick • Wt.-2 lbs. 2 oz.

New Coustille

(B) Popular with knights as well as the rank and file, the Coustille was developed in an effort to create an all-in-one weapon – convenient to carry like a dagger, but with the cutting power of a short sword. The well-tempered blade is light and very fast. Steel pommel and guard with a wood grip covered in leather. Includes scabbard. Made by *Windlass Steelcrafts*®. #501014...\$135 ✂

Overall-22"

Blade-16 3/4" long, 2" wide, 3/16" thick

Wt.-1 lbs. 6 oz.



Jousting Knight

Hand painted figure in silver and gold tones shows regal knight in brave pose. The metalized look is perfect for this steely warrior. Cold cast resin. Approx. 8 1/2" tall. #801230...\$34

Glastonbury Grail

This grail-form goblet, rich with Celtic design, has two large abalone cabochons mounted to either side. This stunning cup has a polished mirror finish on the outside and a brushed metal interior. Pewter and measures 6" high. Safe for drinking. Made in England. #801566...\$90



CIRCA
1300



Knights of the Round Table

The legends of Camelot and the brave knights of King Arthur are all reproduced in this cold-cast porcelain piece. Each knight is hand-painted and has his name written on the back of the base. The table measures 11 3/8" in diameter and has been adorned with Celtic designs. A truly magnificent display piece for office or den. #801668...\$95



War Sword

This type of large sword was used throughout the Middle Ages. Sized so that it could be used easily with one hand but large enough for a two-handed powerful cut. Parts are steel while the grip is hardwood with wire and rawhide. Blade is well-tempered high carbon steel. Comes with scabbard. A good all around Medieval sword. Made by *Windlass Steelcrafts*®. #500924...\$165 ✂

Overall-44½" • Blade-36" long, 2" wide, ⅜" thick • Wt.-3 lbs.

CIRCA
1200

English War Hammer

With the increasing sturdiness of plate armor, the sword became less and less effective against a fully armored knight. The war hammer quickly evolved and became one of the premier weapons. Light, fast and deadly. Dates from about 1430 AD. Made by *Windlass Steelcrafts*®. #600054...\$90

Overall-25¼" • Wt.-1¼ lbs. • Width-head to spike-6½"

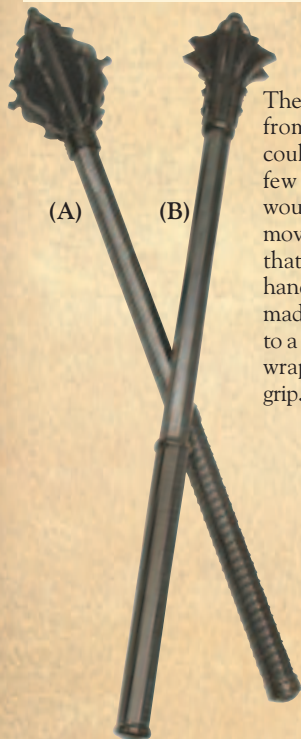
Maces

These two heavy maces, which evolved from man's oldest weapon, the club, could make short work of armor. With a few full sound blows the best of plate would be so damaged that the wearer's movement would be greatly impaired, and that led to a quick defeat. Both of these handsome examples have 8 flanges and are made from steel that has been blackened to a deep luster. The bottoms of the shafts are wrapped in black leather for an improved grip. Made by *Windlass Steelcrafts*®. \$95 Each

(A) Italian-#600624

(B) German-#600626

Overall-24" • Wt.-4 lbs.



Great Bascinet

By the 3rd quarter of the 14th Century this type of helm, which was called "pig-faced" by the English or "Hounds-Skull" by the Germans, had emerged as the most popular form and could be found on the battle-fields all over Europe. Our offering is from 18 gauge steel with an antiqued finish. Approx. 26" cir. with an adjustable leather liner with chin strap. Wt.-4 lbs. 6 oz. #300380...\$225



Studded Leather Belt

2" wide belt top grain leather, hand made, and heavily studded. Can be worn to secure a baldric or to carry a sword. Choose between black belt with nickel plated, brass studs and buckles, or brown belt, with solid brass studs and buckles. Color varies slightly. Please specify S(28"-35"), M(33"-40"), L(38"-45") or XL(43"-50"). All sizes approx. #200178...\$45



Legends Of Sherwood



(A) **Robin of Locksley Gambeson**-Offered here is a gambeson worthy of the outlaw known as Robin Hood.

This heavy two-piece garment consists of a corduroy undershirt with padded and studded sleeves and a quilted sleeveless gambeson. Both pieces are manufactured of a chocolate brown corduroy. The gambeson portion can also be worn with either the Outlaw Shirt shown on this page or a garment of your choice. S/M or L/XL. **Brown** only. #100476...\$95 XXL...\$100

(B) **Outlaw Shirt**-The deep hunter green color offers perfect camouflage for Sherwood Forest, while the tough heavy cotton weave fabric offers long lasting durability. The shirt has a leather lace-up front and buttons on the wrist. (Leather wrist bands sold separately) This piece can be worn by itself or under the Locksley Doublet in place of the studded corduroy shirt. S/M or L/XL. **Green** only. #100472...\$39 XXL...\$44

(C) **Locksley Pants**-These comfortable pants have the same period style and feel as the Gambeson. Made of a durable heavy cotton, the pants have an elastic waistline, allowing for an easy fit. S/M or L/XL. **Brown** only. #100474...\$36 XXL...\$41

(D) **Locksley Boots**-These suede, calf-high boots are both heroic in style, while at the same time, warm and comfortable. The lace-up front allows for a good solid fit. A hard sole has been added for long all-day adventures. **Brown** only. Men's sizes 7-13. #200554...\$85

(E) **Robin Hood Belt**-A perfect addition to the Gambeson, this belt is manufactured of top grade leather and is nickel studded. Specify S, M, L, or XL. #200576...\$36



CRUSADER SHIELD

This solid shield measures a full 32" x 20" and is made of curved wood, covered in a white canvas with a red (color may vary) painted cross emblazoned on the front. Leather arm and shoulder straps. #801508...\$185 (\$5 addl. s/h)



LIONHEART FLAG

The royal standard of King Richard I of England. Indoor/outdoor nylon. 3' x 5' with metal grommets. Flag is double sided. #801430...\$12

HELM WITH CROWN

Perhaps the most famous crusader of all was "Richard the Lionheart." It is made from 18 gauge steel with brass details and has a beautiful brass crown. It is open faced for good vision and easy breathing and has an adjustable liner with chin strap. Truly a regal helm. #300420...\$215



Outfit Combinations

CLASSIC MEDIEVAL SWORD

This sword is an Oakeshott Type X with a Type I pommel and a Type VII crossguard. The long and wide fuller on this blade lightens the sword overall and makes it possible to deliver fast and shearing cuts. The long guard offers good protection from an opponent's shield or blade while the classic wheel pommel brings the sword very nicely into balance. This type of sword was in service for a long period of time throughout all of Europe. Made by *Windlass Steelcrafts*®. Includes scabbard. #500020...\$195 ✂

Overall-39½" • Blade-33" long, 2" wide, ⅜" thick • Wt.-3 lbs.



LIONHEART TUNIC

There was no more romantic figure in history than King Richard of England, known as "The Lionheart." This magnificent tunic is made of a rich red cotton velvet and has the king's original coat-of-arms, the double gold rampant lions emblazoned on the front in stunning embroidery. The tunic has an opening in the front and back for easy riding. Choose S/M or L/XL. #100806...\$59 XXL-\$64

TRANSITIONAL HELMET

This type of helm is an excellent example of the evolution of the knightly helmet. It is one of the first attempts to protect the face with more than just a nasal extension or a mail coif. This helm continued on to become the complete head protection of the barrel helm. 18 gauge steel. Stand included. #300394...\$185 (\$5 addl. s/h)



MEDIEVAL BOOTS

These well-made boots are cut from the best glove-tanned leathers and have an all-suede finish. They're very warm and comfortable. Inside is a ⅜" thick, cushioned insole. What's even better is that they have a hard sole, so you can wear them all day long at fairs and festivals. With a little judicious decorating, they can range from Viking to Scythian, from the Franks to the Renaissance. Men's sizes 7-13. Choose **brown** or **black**.

(F) Low Boot-\$49 With Fringe-#100294
Without Fringe-#100322

(G) High Boot-\$68 With Fringe-#100256
Without Fringe-#100282



(F)



(F)

(G)

LEATHER POUCHES & ARM GUARDS

Pouches-leather with a velvet soft finish. Front closures with hand carved camel bone button fronts with loop closure. Choose black or brown. Fits up to 3" belt loops

(H) Scalloped-7¼" high, 7" wide. #200350...\$20

(I) Acorn-6¾" high, 7" wide. #200298...\$18

Arm Guards-soft leather to provide just enough surface protection from a glancing blow, but remain supple enough for full hand/wrist motion. Choose brown or black. 9½" long. \$24 Pair

(J) X-Strap-reinforcing leather bands for increased support. #200458

(K) Plain-easy to customize to your period outfit. #200420



(H)

(I)



(J)

(K)

ERBACH SWORD

Circa
1480

This sword rests in the Schloss Erbach Armoury and is a fine example of a high medieval/renaissance sword (classified as an Oakeshott type XVIII A). This is truly a beautiful example of a bastard sword, effective in the cut and the thrust. The steel parts are highly decorative and the high carbon steel blade is lightly hollow ground, giving the sword a great feel with either one or two hands. Made by *Windlass Steelcrafts*®. Includes scabbard. #501058...\$265 ✂

Overall 43 1/4" • Blade 34" long, 2 1/4" wide, 3/8" thick • Wt.-3 lbs.

Can be seen in "Records Of The Medieval Sword" by Ewart Oakeshott.

FIGHTING STAFF

When the Normans forbade the bow and sword to them, Saxon commoners could defend themselves with a quarter staff. Fighting with one is an art in itself. Crafted from hickory in the United States. Approx. 72" tall. 1 1/2" round. Wt. 2 lbs. #600752...\$29 (\$5 addl. s/h)

NEW NORMAN HELMET

The Normans spread to England, Sicily and parts of Italy as mounted warriors known for their long mail hauberks, kite shields and conical helmets. This type of slightly curving forward peaked helmet is the second most recognized form. The conical shape allows blows to slide off. The face was provided some protection with the nasal piece which still allowed great vision. Has a handsome aged finish and adjustable liner. #300424...\$165



MEDIEVAL RING CROSS PENDANT



This cross is based upon the relics of an Anglo-Saxon Northumbrian saint. With blue enamel inlay & blue crystal. Includes a 22" metal chain with clasp. Made in England. #200720...\$22



MONK'S ROBE

This may be the most versatile and modest garment one could own, but don't let its simple looks fool you. The person wearing it has most likely earned it through religious, magical or other secretive means. It was a mark of humble accomplishment and immense power. Rough textured fabric is 100% heavy cotton weave and generously cut for the most devoted. Includes long tail hood and waist cord. One size fits most. Dry clean only. Choose **brown, green or black.** #100298...\$95 XXL-\$100



KNIGHT'S TEMPLAR ENSEMBLE

(A) Templar Tunic-This heavy cotton sleeveless tunic has been dyed a bright white. The Order's Maltese styled red cross has been applied over the heart, while a full linen lining has been sewn on the interior. Dry clean only. Choose S/M or L/XL. **#100936...\$65**

(B) Templar Cape-This long matching cape is one of the heaviest and most elegant we have ever offered. The stark white color is offset with a large red cross on the left side, while the interior boasts a matching red lining. Heavy cotton with corded tie. One size. Dry clean only. **#100938...\$145**

(C) Medieval Sword & Tunic Belts-Colorful long belts for both your tunic and your sword. Thin (1") belt looks great worn over tunics. Wide (2") belt will accommodate most frogs. All belts are heavy grade leather and extra long - 70".

Red Belts-Have antiqued brass Maltese crosses.
Wide-**#200680...\$95** • Thin-**#200878...\$75**

Blue Belts-Have antiqued silver crosses.
Wide-**#200682...\$95** • Thin-**#200880...\$75**

(D) Crusader Helm-Developed early in the 12th Century, the Great Helm became the mainstay of the medieval fighting man, and lasted for about 300 years. Worn over a mail coif and padding this helm has menacing, narrow eyeslits for maximum protection. Made by *Windlass Steelcrafts*® from 18 gauge steel. **#300418...\$185**

(E) Templar Shield-This high quality shield is made of a curved wood and heavily padded with a durable canvas. The black and white shield has adjustable arm straps and padded arm guard on the back. 22½" x 25" tall. **#801570...\$165**

(A)



Tunic Detail

(C)



(B)

(C)



(D)

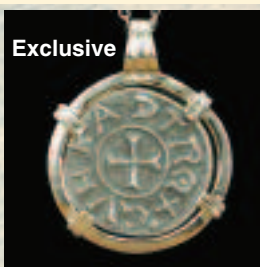


TEMPLAR FLAG

A striking 3' X 5' nylon indoor/outdoor with grommets, this flag is emblazoned with the red cross of the crusades and four crosses of the Templars. **#801444...\$12**



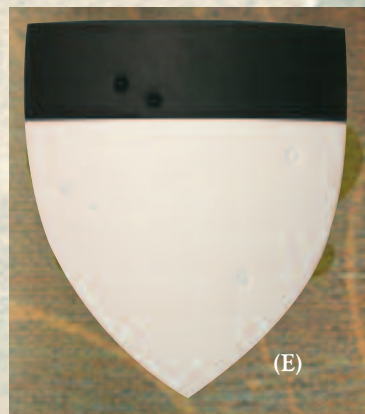
Reverse



Exclusive

CRUSADER COIN PENDANT

This is a replica of a silver Denaro minted from the time of Conrad III, King of Italy (1127-1152). This rare crusader coin has been recast and placed into a sterling silver setting with an 18" silver chain, making it a stunning pendant. The necklace is presented in a beautiful red box, with a silver cross on the lid. Comes with a Certificate of Authenticity. Measures 1¼" across. **#888001...\$30**



(E)

NAUMBURG SWORD

This rare pommel (type N) exists only on a handful of swords. This sword is taken from a figure of Wilhelm Von Camburg at Naumburg Cathedral and is a must-have medieval sword for any collection. Steel parts, leather wood wrapped grip and tempered high carbon blade come together to make for a fine, nicely proportioned sword. Comes with leather scabbard. Made by *Windlass Steelcrafts*®. #500996...\$210 ✂

Overall-38" • Blade-32" long, 2 1/8" wide, 3/16" thick • Wt.-2 lbs. 12 oz

CIRCA
1200



TUNICS & CAPES

(A) **Crusader's Tunic**-This tunic was worn by The Order of "Poor Knights Of The Temple of Jerusalem". Thick white cotton with a full red cross embroidered on the front. Comes complete with corded belt. Dry clean only. Choose S/M or L/XL. Tunic shown with sword and scabbard (not included). #100582...\$65

(B) **Crusader's Cape**-This long hooded matching cape has a red cross embroidered on the left shoulder. Heavy cotton with corded tie. One size. Dry clean only. #100584...\$95

(C) **Hospitaller Tunic**-Worn by the Hospitaller Order, this dark brown heavy cotton long sleeved hooded tunic has a white cross embroidered on the front and ships with a corded rope belt. Comes complete with strips of aged chain mail attached in front and back to give the illusion of a full mail skirt being worn underneath. Dry clean only. Choose S/M or L/XL #100588...\$180

(D) **Hospitaller Cape**-This matching hooded cape (for C above) is a heavy cotton with a fully embroidered white cross on the left shoulder. Dry clean only. One size. #100590...\$95
Swords, Scabbards and Mail not included. See pg. 35 for our full line of Chain Mail & Coifs.



TEMPLAR SEAL BOX

The royal copper seal of the Knights Templar adorns the lid of this beautiful jewelry box. Made from a hard resin, it has been given the look of ancient stone. Measures 4" x 3 1/4". #801676...\$12



FLAG OF ENGLAND

This heroic flag was flown in some of the most decisive battles in English history. 3' x 5' indoor/outdoor nylon with grommets. Double sided. #801442...\$12

CRUSADER SWORD

This is an exact replica of the sword used by the Templar Rene from the movie *Soldier of God*. Red crosses are inlaid into the ends of the guard and a cross is carved on both sides of the pommel. The wood grip is covered in leather and can be used with one or two hands. The blade is fully tempered high carbon steel and the scabbard is included. Made by *Windlass Steelcrafts*®. #501016...\$210 ✂

Overall-41" • Blade-34" long, 1 7/8" wide, 3/16" thick • Wt.-2 lbs. 12 oz.



LATE NORMAN HELM

Moveable nose guard, aged 18 gauge steel, adjustable liner and chin strap. Free stand included. #300370...\$190



PERIOD TIGHTS

These rugged tights will complete just about any period outfit. Made from a soft stretchable 100% cotton, these tights have an elastic waistband and boot stirrups allowing for a comfortable, all-day fit. Colors available in Brown, black or gray. S, M, L, or XL. #100934...\$28



TEMPLAR ROBE

Worn as both a robe and tunic, this long sleeved piece of apparel has been masterfully crafted from the Templar tunic used in the motion picture *Soldier of God*. A red cross is fully embroidered onto the 100% white cotton body. Dry clean only. Order S/M or L/XL. Includes certificate of authenticity with printed signature of producer and star. #100868...\$60

Visit OUR WEBSITE
WWW.MUSEUMREPLICAS.COM

TEMPLAR EFFIGY BOX

As if lifted from an ancient abbey, comes this beautiful representation of a medieval Templar Knight's coffin. The rich detail on this piece coupled with the heavy stone appearance, makes this the perfect box for any keepsake. Resin. 8 1/2" x 3" x 4". #801680...\$24



LONG SWORD

**CIRCA
1400**

The large sword was quite a popular weapon and the ricasso allowed the sword to be gripped past the guard, thus shortening the sword. This makes a thrust more solid since the blade is held securely at two separate points. High carbon steel blade, tempered to a tough spring. Grip is ridged wood, wrapped with leather, and the pommel and guard are steel. Comes with leather scabbard. Made by **Windlass Steelcrafts®**. #500794...\$245 ✂ (\$5 add. s/h)

Overall-48" • Blade-38" long, 1 1/8" wide, 3/16" thick • Wt-3 lbs.



GREAT HELM

Worn with large amounts of padding or worn over a smaller helmet, it was almost impossible to penetrate. Few great helmets have survived the centuries. We have copied one frequently shown in old illustrations and monuments. Crafted of 18 gauge steel with reinforced sights and riveted and welded sections. It also features a ring on the top that was used for securing decorative attachments like a lady's favor. Measures roughly 15" tall. Wt.-5 lbs. 8 oz. Circa 1350. #300082...\$195



**CALL TOLL-FREE
1-800-883-8838**

CRUSADER FLAG

The red cross of the Crusades is accented by the gold cross of Jerusalem. Double sided, indoor/outdoor nylon. 3' x 5' with metal grommets. #801742...\$12

TEUTONIC KNIGHT ENSEMBLE

The German Order of the Teutonic Knights was formed at the end of the 12th century and played an important part in the defense of Acre during the Third Crusade and later moved its base of operations to Transylvania to help defend Hungary against the Cumans.

Teutonic Tunic-Rich heavy natural cotton sleeveless tunic has the black cross of the order sewn to the front and has a linen lining to the interior. Dry clean only. Choose

S/M or L/XL. #100870...\$65

Teutonic Cape-This long matching hooded cape has the Teutonic black cross sewn over the left shoulder. Heavy cotton with corded tie. One size. dry clean only. #100872...\$90



KNIGHTLY SWORD

Circa
1200

A knight demanded that his sword be a good one, but also fair to look upon. This sword is both. Its beautifully carved solid hardwood grip provides a very secure hold and its fluted pommel balances it nicely. The guard is long for good protection from a sliding shield or weapon, and both are from antiqued brass for ease of care. Altogether an effective one hand sword. Made by *Windlass Steelcrafts*®. Includes scabbard.

#501076...\$235 ✂

Overall-40" • Blade-33" long, 2" wide, 3/16" thick • Wt.-3 lbs. 9 oz.

MEDIEVAL DOUBLE WRAP BELT

From the early B.C. Celts to well past the Renaissance, warriors figured out that a double wrap belt was a more comfortable way to carry a sword. But it was in Medieval times that the practice really flourished. When the extra length of belt wraps around a body the second time, both hips then support the weight of the sword. Includes a frog hanger that will fit all scabbards. Made of beautiful top grade leather. Choose **brown** with brass or **black** with nickel silver studs and buckle. 1 1/4" wide. Specify S, M, L or XL. #200454...\$52



Available
in Brown
or Black



KNIGHTLY BELTS

These two belts are the perfect choice for almost any medieval knightly outfit. The extra long 80" heavy grade leather is gorgeously accented with antiqued brass roses and heavy duty buckle. \$95 each

Black-#200676 • Brown-#200678



WELSH DRAGON FLAG

The royal standard of Wales. Indoor/outdoor nylon. 3' x 5' with metal grommets. Flag is double sided. #801448...\$12

THE ROUND TABLE CLUB

Save 15% on Museum Replicas orders.

Start saving today! For a \$50 membership fee, you'll receive 15% OFF on all your purchases for one full year. Your membership begins instantly with your payment! If ordering by phone, just ask the operator to sign you up. If ordering by mail, just write "Round Table" on your order form and include your \$50 payment (be sure to take 15% OFF your merchandise total only!). Remember, membership begins immediately! Cannot be used in conjunction with any other discounts.

FALCHION

CIRCA 1250-1300



Although the double-edged sword gets most of the press, the single-edged falchion was favored by a great many knights and men at arms. The wide cutting blade was quite effective against mail. Although the falchion was intended primarily to be a cutting weapon, the development of the point was not ignored. This example has a very strong point that would penetrate mail with a hard thrust. A well-designed fighting weapon. Made by *Windlass Steelcrafts*®. The blade is tempered high carbon steel, the guard and pommel are both steel, and the grip is wood, covered with leather. Complete with a leather scabbard. #500204...\$185 ✂

Overall-34" • Blade-28" long, 1 1/4" wide, 3/16" thick • Wt. 3 lbs.

Brass Basket-Hilt Claymore

(A) This Scottish Basket-hilt Claymore is the equal of any raised by clansmen as they overran the English at the Battle of Falkirk on Jan. 17th, 1746. The pierced basket-hilt is a faithful reproduction of one found on the Culloden Moor. The fully tempered high carbon steel blade is of the typical fullered, double-edge, broadsword pattern of the 1740's. The basket also has a rich red cloth liner and a scabbard is included for this great price. Made by *Windlass Steelcrafts*®. #500922...\$285 ✂

Overall-39½" • Blade-32½" long, 1¼" wide, ⅜" thick • Wt.-3 lbs. 14 oz.

Early Scottish Dirk (B)

(B) A direct descendent of the medieval ballock dagger. The blade was long and single-edged. Made to use alone, with a shield and sword, or just with a basket-hilt claymore. We have replicated an early version of the dirk. The hardwood handle is carved with a chevron like pattern copied from an original of the same time period. For those with a serious interest in the Highlands, this is a must for any collection. Includes scabbard. #400508...\$115 ✂

CIRCA 1550

Overall-21" • Blade-14⅞" long, 1¼" wide, ⅜" thick • Wt.-1 lb

CIRCA 1860



(C)

Bonny Scottish Dirk

(C) 11¼" long dirk blade showcases crisp etchings of the traditional Scottish foliage and thistle motif on both sides of the blade. 5" long, swaged false edge and a knurled pattern on the blade back mark this dirk with distinction. The black wooden handle is carved in an interweave pattern dotted with ornamental nickel silver tacks. The sheath is wood covered with leather and reinforced with metal throat and tip. Made by *Windlass Steelcrafts*® from hand forged high carbon steel. #400806...\$110 ✂

Overall-17½" • Blade-11⅜" long, 1⅝" wide, ⅜" thick • Wt.-1 lbs. 2 oz.

Sgian Dubh

(D) A Scottish tradition, the Sgian Dubh is worn in the stocking of the Highlander. Our Sgian Dubh has a black wooden handle that is carved on one side, smooth on the other. Embossed nickel silver fittings feature a thistle motif. Comes with sheath. #400910...\$40 ✂

Overall-6⅝" • Wt.-2 oz.
Blade-3¼" long, ⅜" wide, ⅜" thick



(D)

Onyx Cross Pendant

From the legends of Britain comes this polished black onyx stone emblazoned with a white cross on its face. Measures approximately 2" x 1½" with a 24" black nylon cord for hanging. #200732...\$45



CIRCA
1700

Call Toll-Free 1-800-883-8838

(A)



Highland Dress

(A) Our Highland Dress is designed so that the sleeves, bodice and skirt are made into one – eliminating the need for three garments. Dress features a full skirt matching the plaids in our men's kilt. **Red/green plaid. Black bodice with white lace trim** adds to the lovely look of this dress. Back lacing. S(6-8), M(10-12), L(14-16) or XL(18-20). Dry clean. Cotton poly bodice and blouse and acrylic and wool skirt. **#100352...\$64 XXL\$69**

Apparel For Country Lassies

(B) **Underdress**-100% Muslin with elastic wrist gathers and a drawstring neck which can be worn on or off the shoulder, whichever the occasion demands. S, M, L or XL. **#100104...\$49 XXL-\$54**

(C) **Country Maid Skirt w/Integral Bodice**-The bodice and attached skirt are made of durable 100% cotton. The bodice is laced to fit with brass grommets, and the full skirt is split down the front. Sizes S, M, L or XL Choose. **Black or emerald green. #100126...\$70 XXL-\$74**

(B) & (C) Set-\$107
or XXL Set-\$111

(B)



(C)



Circa
1500



Primitive Scottish Dirk

This early type of dirk evolved from the Kidney Dagger and was the first step toward the ornate Scottish Dirk we know today. The grip is solid hardwood and the parts are steel. The long high carbon steel blade is flexible and well-tempered. This is a must-have item for the highlander. Made by **Windlass Steelcrafts®**. Includes scabbard. **#402352...\$95 ✂**

Overall 19 1/4" • Blade 14" long, 1 1/8" wide, 3/16" thick • Wt.-1 lb.



Scottish Lion Flag

The royal standard of Robert the Bruce and Scotland. Indoor/outdoor nylon. 3' x 5' with metal grommets. Flag is double sided. **#801446...\$12**

(D)

(E)

(F)

(G)



Scottish Sporrans

Part of the Scottish Highlander's dress, the sporran hung within easy reach from the front of the belt. These fine leather pouches are required dress for Scots, but also make a tough and durable belt pouch suitable for period dress for most time periods. Complete with a high quality leather belt. 6 3/4" x 7 3/4" closed. 46" belt. Approx. weight 14 oz. Flap has steel snap.

(D) Brown-#200312...\$65

(E) Black-#200042...\$65

(F) Black w/Imitation Fur Front-#200104...\$70

(G) Brown Tied Tassel-tied thong button flap closure. 7 1/2" x 8" closed. 40 1/2" belt. **#200142...\$75**

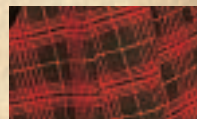
**CIRCA
1250**



Wallace Claymore

The great Scottish hero, William Wallace, and his band of lowlanders routed a superior English force of 50,000 at Stirling Castle in 1297. In his ongoing challenge of Edward I, he also laid waste to several counties in the north of England. These early attacks inspired Scottish Nationalism that culminated with the achievement of independence under Robert The Bruce. This two-hand sword has a well tempered high carbon steel blade with steel parts and a wood grip wrapped with cord and leather. Made by Windlass Steelcrafts®. Includes scabbard. **#501106...\$295** ✂

Overall-59" • Blade-46½" long, 2" wide, ⅜" thick • Wt.-5 lbs.



(C)

(D)

(E)

Highlands Shirt & Kilts

(A) This is a great period shirt for many outfits. However, when coupled with one of our kilts, its full sleeves and antique buttoned collar create a perfect combination for any Highland event. Natural only. Order S/M or L/XL.

#100880...\$39 XXL-\$44

Colors and designs of the plaids used for kilts conveyed no specific meaning until the 18th Century. Kilts were originally pleated on the floor before being tied around the waist. We've made this attractive kilt easier for you to put on by sewing in the pleats. Four choices, acrylic wool. Choose S(28"-30"), M(32"-34"), L(36"-39") or XL(42"-44"). Dry clean only.

\$38 each XXL-\$42 each

Choose (B) Brown or
(C) Red Plaid...**#100896**

Choose (D) Camel/Navy or
(E) Red/Green...**#100092**



**CIRCA
1200-
1600**

Two-Hand Claymore

The remains of this massive Scottish war sword are housed in London's renowned British Museum. The furniture is brass, as with many Highland weapons, to prevent rust in the chronically wet mountain climate. This type of sword would have been carried to the great battlefields where the Scots struggled against their most bitter enemy, the English. In the hands of a brawny highland warrior this would have been a devastating weapon. Hardwood grip accentuates a very attractive sword. High carbon steel fullered blade, ready for an edge. Made by Windlass Steelcrafts®. Includes scabbard. **#500940...\$295** ✂

Overall-47½" • Blade-38½" long, 1⅞" wide, ⅜" thick • Wt.-6½ lbs.

Dark Age Sword

During the so-called Dark Ages, there were many advances in metallurgy and better swords were being produced. This slashing sword has a wide blade of 1095 high carbon steel. The parts are antiqued brass and the grip is wood covered in brown leather. Made by *Windlass Steelcrafts*®. Includes scabbard. #501046...\$235 ✂

Overall 38" • Blade 32" long, 2" wide, 3/8" thick • Wt.-3 lbs. 6 oz.



Celtic Pendants

These antiqued brass pendants were styled after ancient Celtic rock carvings and evoke the power and courage of the beast. Approx. 1 1/2" in diameter. \$15 each

(A) Red Deer...#200662 • (B) Celtic Boar...#200660

Fine solid brass pendants portray mythical celtic sea creatures in high relief. \$18 each

(C) Seahorse-#801330 • (D) Seabeast-#801332



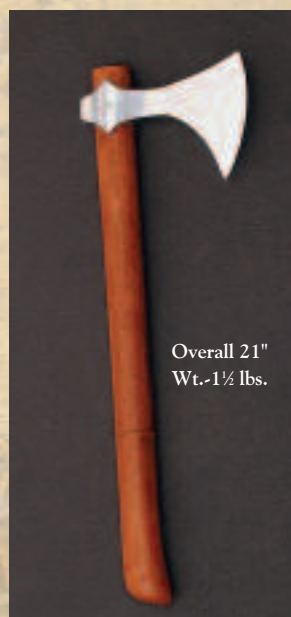
Barbarian Helmet

This fearsome helmet has a built-in leather mask and stiff leather lames around the back. The shell is hammered 16 gauge steel with an antiqued finish. Adjustable liner. Made by *Windlass Steelcrafts*®. #300366...\$245



Celtic Triple Candle Bowl

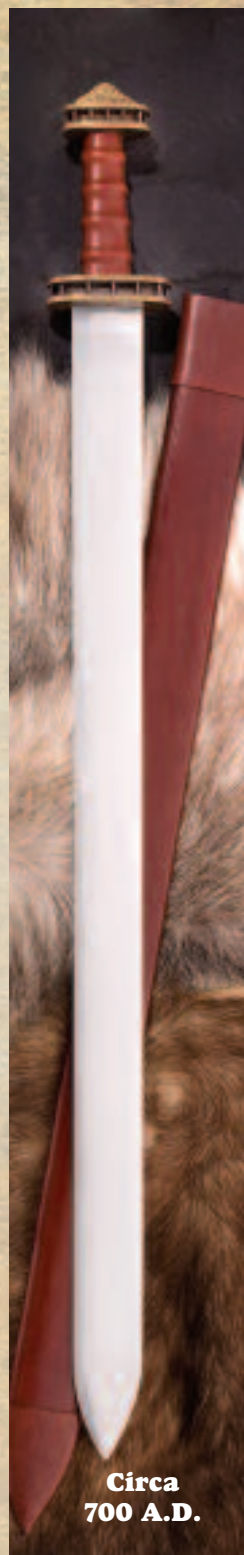
A truly magnificent centerpiece for any feast, this stunningly unique bowl has been beautifully inlaid with heavy Celtic knotwork and is able to hold three one-inch dia. candles on its towering spires. Cold-cast resin with a metalized finish, giving it the look and feel of antiqued bronze. 7 3/4" across by 5 1/4" tall. #801484...\$42



Overall 21"
Wt.-1 1/2 lbs.

Danish Hand Axe

To the victims of the Vikings, they were all Danes. It didn't matter whether they came from Norway, Denmark or Sweden, they called them Danes. Smaller axes were quite popular for all sorts of work, hewing the limbs of trees as well as the limbs of men. They could be thrown if needed, but were quite handy in close combat with or without a shield. Not only is this a fine replica, it is a fine axe in its own right. High carbon steel blade. Made by *Windlass Steelcrafts*®. #600642...\$85



Circa
700 A.D.

5 Lobe Viking Sword

After many requests, we are happy to bring you a Viking Sword that the "basic" Norse warrior would have worn and used. The parts are not as fancy as the ones on our other Viking swords, but are classic to this period. The slashing blade with a long, wide fuller makes for a very well-balanced sword that feels good in the hand. Parts are steel and the grip is wood covered in leather. Scabbard included. Made by *Windlass Steelcrafts®*.

#501052...\$235 ✂

Overall-36½" • Blade-30⅝" long, 1⅞" wide, ⅜" thick • Wt.-2 lbs. 4 oz.

Circa
750



(A)



(B)



(C)

(A) **Leather Jerkin**-This stunning brown leather, short sleeved jerkin can be worn many different ways or with the padded shirt for the ultimate in dashing attire. High grade leather with a buckle-up front. Sizes S, M, L or XL. #100764...\$239

(B) **Padded Shirt**-A lace-up cotton gambeson that can be worn as a stand alone garment or as an undershirt with our leather jerkin. The sleeves are decorated with a nordic celtic string design. Dry clean only. Sizes S/M or L/XL. #100766...\$60 XXL...\$65

(C) **Cape**-This full length period cape is the perfect piece to complete the look of a true celtic prince. The soft olive green cotton velvet is richly accented with a contrasting stripe, bordered by lacing. Dry clean only. One Size. #100768...\$89

(D) **Velvet Pants**-Comfortable fitting pair of black stretch cotton velvet tights, which has an elastic waist. S/M or L/XL. #100836...\$43

(E) **Boots**-These calve-high boots are accented with a series of period straps. The soft suede exterior is complimented with a plush rayon lining. The anti-skid rubber soles ensures this boot to be a comfortable, all day piece of apparel. Sizes 8-13. #100770...\$165



(E)

Viking Longship

A museum quality reproduction of the famous Drekar (Dragonhead) Viking Longship. It could take through the waters with oars or sail with little loss to speed or maneuverability. Cast in resin to capture fine details, this collector quality ship features hand painted accents and hand strung rigging. Includes display base. 13½" long, 11½" tall. #801090...\$64



Historical Excalibur

If King Arthur actually existed, many historians place him as a war leader seeking to halt the invasion of the Saxons after the fall of Rome. There are many indications that England did, after a time of much strife, have a brief period of peace and prosperity in what is now called "the Dark Ages". This sword is of a type that was widely in use during this period and would be what a hard fighting warrior would prefer. Nicely balanced, well-tempered high carbon steel blade complimented with antiqued brass parts. Period scabbard included. Made by *Windlass Steelcrafts*®. #500798...\$225 ✂

Overall-37" • Blade-31¹/₄" long, 1³/₈" wide, ³/₁₆" thick • Wt.-2 lbs. 12 oz.



Viking Tankards



Both of these heavy gauge tankards hold one pint of your favorite beverage and are made in England of the finest pewter. Choose either The Cernunnos with etched knotwork and cast handle or The Viking Horn with a bone resin handle and cast pewter mounts.

(A) 801560...\$65

(B) 810558...\$75

Buy both for \$130 and save \$10!



Embossed Viking Helmet

This helmet is rich with deeply embossed detail across and around the crown and on the nose guard. Raised traditional dog designs embellish the hinged cheek plates. 18 gauge steel has an antiqued finish. Approx. 26" inner cir. with an adjustable leather liner with chin strap. Wt.-3 lbs. 12 oz. #300386...\$235



A Greenman For Every Season

Intricate classical designs of the mythical Greenman bring the seasons to life and are attractive decorator accents. The four seasons plaques feature a different greenman on each, surrounded by the appropriate foliage. Each is lightly hand washed with subtle color suitable for its season. 5¹/₂" dia. Cold cast resin. #801406...\$35 set of 4

Chalisbury Grail

This faithful reproduction was created from a 17th century drawing of the mythical Grail, believed to be concealed within the Chalisbury Cathedral. It is made of fine English pewter and can be used for drinking. Twelve hematite stones decorate the base, while four cornelian cabochons adorn the stem. 4" high, 5" in diameter. #801424...\$85



Norwegian Viking Sword

This hilt type is believed to have been produced most commonly in Norway. We found this one in the National Museum in Copenhagen. The pommel and guard are solid German silver and somewhat massive compared to many other Nordic swords, but are far from being too heavy and give the sword a very solid and well-balanced feel in the hand. The well-tempered blade is deeply fullered and has a good spring. A very attractive sword to add to your collection. Comes with scabbard. Made by *Windlass Steelcrafts®* from high carbon steel. #500944...\$265 ✂

Overall-37½" • Blade-30½" long, 1½" wide, ⅜" thick • Wt-3 lbs.

Examples can also be seen in the book "Swords Of The Viking Age" by Ian Pierce.

Viking Raven Longship

Beautiful reproduction of the famous long ships used by the Norse to "conquer the world". The longship, which could take to the waters with oars or sail with little loss to speed or maneuverability made it possible. Cast in resin to capture all the fine details, this collector quality ship features hand painted accents and hand strung rigging. Includes display base. 12¼" long, 10" tall. #801300...\$60



Woolen Viking Tunics

These are the finest viking tunics we have ever offered. Made from 100% wool, the rich fabric is heavy and accurate to the period. The sleeves, collar and hem are accented with a thick Nordic design trim. An authentic addition to your Viking wardrobe. Dry clean only. Available in either **Grey** or **Brown**. Choose S/M or L/XL. #100804...\$65 XXL-\$69



Medieval Long Belt

This wonderful period belt is a fantastic addition to a variety of different outfits. This style belt was worn from the Dark Ages through the High Middle Ages. Made of a thick, top grain leather, it is richly adorned with antiqued and polished brass accents, buckles and belt tip. The extra long length makes it not only historically accurate, but wearable by just about any sized man. Brown only. One size: approx. 70". #200672...\$110



Thor's Hammer Pendant

Thor's hammer pendant is cast in sterling silver and carries the name of the hammer, MJOLNIR in Futhark runes. Includes 24" long rhodium plated chain (or use your own leather thong for a more traditional look).

(A) Runes on black background. #801308...\$29

(B) Runes on red enamel background. #801310...\$39

CIRCA
900

Swedish Viking Sword

This beautiful and unique sword was unearthed in Sweden and can be seen in "Cultural Atlas Of The Viking World" as well as other publications. Quite famous as an artifact, it displays the unknown swordmaker's skill and imagination. The pommel is almost fanciful while the guard displays one of the classic Viking forms. It has the typical wide fullered slashing blade that the Vikings loved. A great chance to own a copy of a well-known sword. Parts are steel and grip is wood covered in leather. Comes with scabbard. Made by *Windlass Steelcrafts*®. #501054...\$255 ✂

Overall-39½" • Blade-32¾" long, 2½" wide, ⅜" thick • Wt-2 lbs. 6 oz.



CIRCA
14th Century

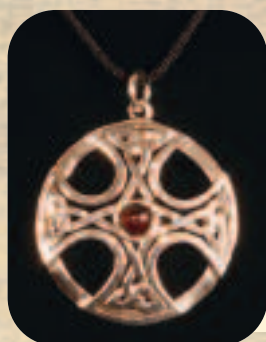
Foot Soldier's Falchion

In hard pressed close combat a full size weapon could be difficult to employ; that's when a short sword came into play. This type of weapon was usually carried as a secondary sword most often worn on or behind the right hip, leaving the left side open for the carry of a larger weapon. The size and shape of the blade made this piece very handy for camp life too. #500914...\$185 ✂

Overall-28" • Blade-22" long, 1¼" wide, ⅜" thick • Wt-2 lbs. 3 oz.

Reindeer Fur

Beautiful, high quality reindeer fur from Finland. Not only was fur worn, but it provided a durable, comfortable ground cover. Note: these deer were hunted by Lapps as their main food source and not killed for industry or sport. They cherish animals and the sustenance they provide. Approx. 5' long x 3' wide. Weighs about 3 lbs. #800624...\$120



Cross Of The Isles

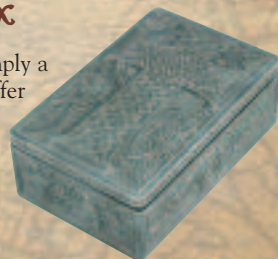
A truly beautiful cross pendant for a period gathering or everyday wear. This sterling silver cross measures 1¼" and is accented with a blood red stone in the center. An adjustable 24" leather thong is included. #200882...\$36



CIRCA
950

Celtic Cross Box

Whether you use this as a jewelry box or simply a conversation piece on a coffee table, this coffer is sure to catch everyone's attention. The lid is emblazoned with a beautiful Celtic cross, while the remainder of the box is heavily embellished with Celtic designs. A black flocking covers the interior. Resin. 7" x 4½" x 2½". #801578...\$22



Leuterit Sword

(A) The British Museum has many fine Viking swords. We have stayed true to the size and weight of the original. The Vikings were quite conscious of the need for a good sword, and when they found one, they took quite good care of it, so that many swords served several generations of warriors. Guard and pommel are silver, with copper lozenges. Grip is wood with silver pins. Made from high carbon steel by *Windlass Steelcrafts*®, complete with scabbard. #500806...\$265 ✂

Overall-38¼" • Blade-31" long, 2⅝" wide, ⅜" thick • Wt.-2 lbs. 8 oz.

Sticklestad™ Viking Sword

(B) Named for the Battle of Sticklestad. Made from high carbon steel by *Windlass Steelcrafts*®, the sword is a beautifully balanced and highly effective weapon. Capable of both cutting and thrusting, it is also a delight to the eye. Pommel and guard are tastefully decorated with copper. Leather covered wood grip. Complete with scabbard. #500670...\$245 ✂

Overall-37" • Blade-31" long, 2" wide, ⅜" thick • Wt.-2 lbs. 12 oz.

(C) Long Bladed Hewing Spear

(C) Although we do not know the exact form and shape of the Viking hewing spear, we do know that they were used. This is a spear that would thrust effectively, and yet have the power to cut decisively. High carbon steel blade. Slim and attractive, it is just the spear to carry on your next Medieval outing. Pole not included. Made by *Windlass Steelcrafts*®. #600444...Reg. \$45...Catalog Special \$39

Overall-25" • Blade-16" long, 2¼" wide

Viking Spear

(D) Despite the adulation and reverence given to the sword, the spear was generally the weapon of choice for Vikings. Used as throwing weapons and as pikes, spears were an indispensable part of their daily routine. This Viking spear is hand forged of a tough, high carbon steel by *Windlass Steelcrafts*®. Spearhead includes a 4½" steel socket. 9¼" long spear head is 2" wide and ⅜" thick. 14¼" overall. Wt.-1 lb. Pole not included. #600050...\$36



Skull Thor's Hammer

A true viking power amulet. Made of fine pewter with both a blue jewel and resin bone skull inset in the center. Comes with a 22" metal chain with clasp. Made in England. #200724...\$30



Butt Caps

Can be used for any spear since the beginning of the Iron Age. Made of mild steel, and give an improved appearance as well as balancing the spear. These are generic, and do not represent any one specific time or place. Ready to mount. \$25 Each

(E) Round Ended-4⅞" overall. Wt.-8 oz. #600226

(F) Flat Ended-5" overall. Wt.-8 oz. #600248

Visit Our Website www.museumreplicas.com

(A)

(B)

(C)

(D)

CIRCA
750

CIRCA
900

(E)

(F)

Damascus Viking Sword

Early Viking swords were forged from layers of iron interwoven with strands of steel to produce a very tough sword. Damascus, or pattern welded steel, was used to make the blade strong enough to withstand the rigors of combat. Excavations of a number of Viking swords turned up this lovely damascus specimen in Finland. It has the lobed pommel loved by the Norsemen. The early style blade is well-suited to the quick, slashing blows of the Viking warrior. Our version is made by **Windlass Steelcrafts®** of high carbon damascus steel. Blade is polished with the fuller etched to show the damascus construction of the blade. Pommel and crossguard are steel. Grip is leather wrapped wood. Scabbard is wood covered in leather with steel mounts. #500262...\$425 ✈

Overall-36" • Blade-31½" long, 1¾" wide, ⅜" thick • Wt.-2lbs.

Can be seen in "Records Of The Medieval Sword" on pg. 83 by Ewart Oakeshott.



Circa
850



CIRCA
750

Seax

The seax, or sax, was universal in Northern Europe. Carried and used by the Saxons, Angles, Vikings and German tribes, its use probably dates before the fall of Rome and continues on into the early Middle Ages. The lobed pommel and guard are brass, and the wood grip is studded with brass tacks, for a very secure and comfortable grip. The blade is etched on both sides, flat ground, and capable of taking and holding a razor sharp edge. Leather sheath riveted and laced like the originals, has two thong slots. Made by **Windlass Steelcrafts®**. #401022...\$125 ✈

Overall-19" • Blade-13" long, 1¾" wide, ⅜" thick • Wt.-1 lb.

The remnants of this Seax can be seen in the British Museum.

Viking Tunic

During the Viking, Norman and Saxon periods, men of all classes wore tunics. The front was open a few inches and adorned with trim as well as the hem and sleeves. One size fits most. (Belt not included). **Green or brown.** 100% cotton. Dry clean only. #100018...\$45 XXL-\$49



Viking Shield

This finished shield has been prestained a **dark brown** and has a steel boss, decorative strips and rim, all bolted on. The back is covered in felt and has a grip and arm strap. ½" thick by 29" round. #801108...\$175 (\$5 addl. s/h)

Viking Helmet

This strong, accurate helmet is based on many illustrations as well as remaining fragments. Made of 18 gauge steel plates riveted together by **Windlass Steelcrafts®**. It includes the famous Viking "goggles," the band of steel that protected the nose, eyes and upper cheek bones without interfering with breathing or visibility. Wt.-4 lbs. 12 oz. It's an impressive helmet that conveys the warlike and fighting aspects of the warriors who used them. Comes with liner. Circa 900. #300040...\$165



Götaaland Sword

This is a fine example of the true ring-hilt sword. Its highly decorated parts have an antiqued finish including the ring (the purpose of which is still unknown). Tempered, high carbon steel blade. Includes scabbard with brown leather shoulder strap with detailed parts. #500960...\$345

Overall-36" • Blade-30¾" long, 1½" wide, ⅜" thick • Wt-2 lbs. 10 oz.

Battle Axe

The axe is almost as old an implement as the club. Metal axe heads were among the first handiworks created during the Copper Age. With all this history it is easy to see why a Medieval warrior would choose a good axe for battle. This new axe has a back spike to add to its effectiveness as a weapon of war. The steel head is pinned to a hardwood shaft that is curved at the end on this one hand axe. Made by **Windlass Steelcrafts®**. #600754...\$110

Overall-23¼" • Wt.-1 lb. 8 oz. • Head-6¼" x 9½" wide. ⅜" thick

**Circa
1100**

Norse Helm

This magnificent helm combines 18 gauge steel and intricate brass accents, richly decorated with Nordic designs and patterns. A veil of riveted mail hangs from the back of the helmet, while leather ties on the cheek flaps and an adjustable liner allow for comfort for the wearer. #300414...\$245



**CALL TOLL-FREE
1-800-883-8838**

Viking Puzzle Urn

This uniquely stunning urn is sure to grab the attention of any guest. Made of cold-cast porcelain, it has been metalized and looks like antiqued silver. The secret of this piece is that it has three compartments, allowing for a great hiding place for that important keepsake. 5½" tall, 5½" wide. #801660...\$45



Belt

A truly fantastic belt made of a heavy grade brown leather. It measures a full 74" in length. Nickel studs adorn the belt. Brass buckle. One size. #200674...\$48



Feasting Utensils

For the reenactor on the go. Our set of spoon, knife and fork fits into a tie-fold open belt pouch for a great combo that is easy to take along to the fair, picnic, campout. Comes with leather pouch (not sold separately). #800438...\$50

GLADIATOR WOODEN GLADIUS, TUNIC & BELT



(A)

(A) Wooden Gladius-Not only were wooden swords used by Gladiators for training, but if he survived the arena and lived long enough to retire, a symbolic wooden gladius (Rudis) was awarded as a token of discharge and freedom. #600774...\$39

Overall-27"
Blade-20" long,
1 1/4" wide, 5/8" thick
Wt-3/4 lb.

(B) Tunic-The basic blue tunic of a slave, who was chosen to fight for his freedom in the arenas of Rome. This simple rough weaved tunic has unfinished edges, giving it a peasant-like appearance. Blue. S/M or L/XL. #100966...\$39

(C) Belt-This wide kidney belt offers great protection in the colosseum. Made of an aged-dyed leather, the belt has three adjustable straps with antiqued brass buckles for a secure fit. Brown. Order S/M or L/XL #200972...\$85

(D) Sandals-All leather construction with rubber soles and three adjustable ankle straps. Men's whole sizes 7-13. Brown. #100958...\$74

Vambraces and Greaves-Made from heavy grade leather and though thick, are easy and comfortable to wear. Good for a large variety of outfits.

(E) Vambraces-#200852...\$40

(F) Greaves-#200854...\$65



(B)

(C)

(D)



(C)



(E)

(F)



(G)



(H)

GRECIAN PENDANTS

Sand-cast pendants. Each comes with a leather thong. \$18 each

(G) Sparta-antiqued brass with the chevron of Sparta.
1 1/4" across. #200886

(H) Medusa-antiqued nickel with the head of Medusa.
1 3/8" across. #200884

ROMAN ARMOR

Made by Windlass Steelcrafts®



(A)

(B)

(C)

(D)

(F)

(E)

(G)

(A) Roman Trooper's Helmet-Complete with cheek plates and brass fittings. Formed of 18 gauge steel and brass. Approx. 4½ lbs. #300074...Reg. \$190...
Catalog Special \$145

(B) Lorica Segmentata-Introduced in the ranks of the Roman Army during the first century A.D. and widely used at the height of the Roman Empire. It never completely replaced the mail (*Lorica Hamata*) and scale armor (*Lorica Squamata*), for the modern mind the Lorica Segmentata typifies the Roman soldier. Our replica is superb, made of 18 gauge steel. It is closely copied from a type of Lorica found in Newstead, Scotland, that dates from the second century A.D. This armor is quite flexible and allows plenty of freedom of movement. Wt. 17 lbs. 6 oz. Fits chest sizes 42" to 46". #300176...\$295

(C) Baldric-Brown leather. Fits Gladius (A) & (B) on page 62. #200368...\$40

(D) Belt-Primarily ornamental, this Roman soldier's belt, called a "Cinculum Militaire", was comprised of a studded leather belt with varying numbers of hanging leather strips. Based on one that was popular about 100 A.D. Will accommodate up to a size 46" waist. #200468...\$65

(E) Greaves-Designed to protect the lower leg from the cut of a sword or the vicious kicking that occurred during battle. Our replica steel greaves are based on patterns pictured on Trajan's Columns and feature an articulated knee piece for extra protection. L-18¾", W-8¾", Bend-5½". #300010...Reg. \$77/pair...
Catalog Special \$69/pair

(F) Roman Tunic-This oversized shirt extends to mid-thigh, giving it a distinctive look. Red only. Romans took the color from the Spartan's red cloaks as later did the English army. Spartans wore red so that their enemies would never see them bleed. Male sizes: S, M, L or XL. #100042...\$49
XXL-\$54

(G) Shield-This wooden oval cavalry shield is covered front and back with leather. It has a black steel boss and gold leather wings and lightning on the face and arm straps on the back. Curved shield is 23" x 39" by ¾" thick. Wt.-7 lbs. 4 oz. #801068...\$160 (\$15 addl. s/h, no express)

As seen in the HBO Production Rome.

(F)



(H) Roman Sandals-Worn by the Roman Legion for the long march and the long campaign that often followed it. The hobnails kept the sole from wearing out too quickly. Leather construction. Brown and limited quantity in black. Whole sizes 6-12. Excellent quality. #200254...\$65



(H)

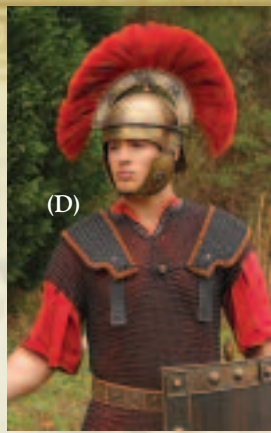
(A)

(B)

(C)

(D)

(E)



(A) Rome Centurion Helmet-Based on the Montefortine Type "C", this handsome officer's helmet is hammered brass with an antiqued finish and a beautiful red crest. Weight with crest is 4 lbs. 12 oz. Circumference is 26". Fully adjustable leather liner. #300396...Reg. \$395...**Catalog Special \$325**

(B) Mail Shirt-Mail, called "Hamata" by the Romans, was in use before the reign of Caesar until well after Trajan. Shirt is trimmed in leather at the arms and throat and has removable studs for attachments. The butted throats are blackened. One size fits most. Will accomodate up to approximate size 50" chest. #300398...Reg. \$325...**Catalog Special \$265**

(C) Officer's Doublings-Leather and antiqued brass shoulder pieces designate an officer and match the helmet. #300402...\$95

(D) Shoulder Doublings-Made in the Greek fashion of a linen cuirass these shoulder pieces lace and tie onto mail shirt (B). They are made from thick leather and covered in black mail trimmed in leather. #300400...\$95

(E) Belt-This thick leather light brown belt is 2 1/2" wide and has a brass buckle and antiqued brass embossed plates. Plates are riveted most of the way around with two hanging rings. This belt will look good with a large range of our swords. S, M, L or XL. #200646...\$48

Manufactured by Windlass Steelcrafts®.

As seen in the HBO Production, "Rome."

LATE ROMAN SWORD

This sword is based on the eagle-hilted sidearms portrayed on the statues of the Tetrarchs in Venice. A type used by mounted fighters of the Eastern Empire. The eagle head pommel is brass as is the guard. The single-edged blade can deliver a heavy blow, especially from horseback, and is made from high carbon, fully tempered steel. Made by *Windlass Steelcrafts®*. Comes with decorative scabbard. #500916...Reg. \$235...**Closeout \$175** ✂

Overall-29" • Blade-21 3/4" long, 2" wide, 3/16" thick • Wt.-2 lbs. 9 oz.

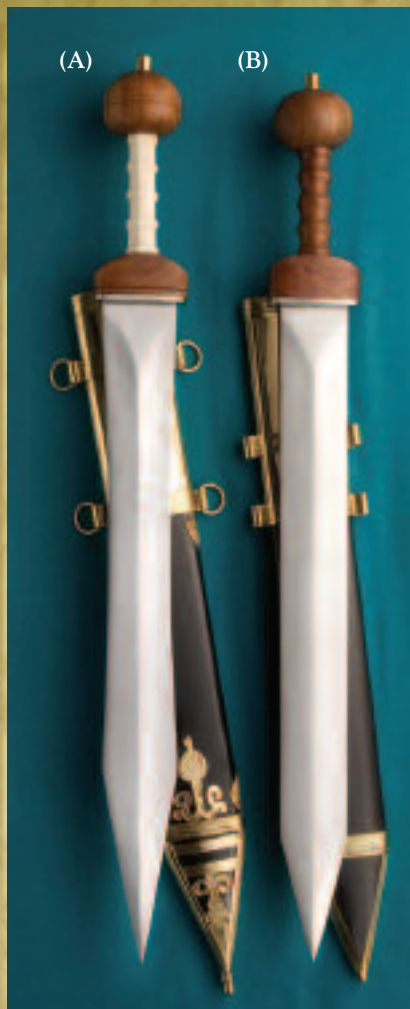


ROMAN CHARIOT

The thrills of the coliseum come alive in this cold-cast porcelain piece, which measures a full 10" X 6". #801574...\$34



Circa
300-400



THE ROMAN GLADIUS

The Roman Army's approach to warfare was direct and pragmatic. It chose the Gladius as its principal sidearm because it was practical and efficient and excelled in any close combat situation. The early Gladius (our version is the Mainz pattern) was wasp waisted with a long point that combined cutting power and stabbing ability in one handy weapon. Later versions (we offer you the Pompeii) were not waisted and had a shorter point but were just as effective – and easier to make. Both swords served side-by-side for many years and it was not uncommon to find 4th century legionnaires carrying the earlier model. This is the sword that conquered most of the known world. High carbon steel. Made by *Windlass Steelcrafts®*.

(A) Mainz Pattern—faux ivory grip and ornate brass applique on the scabbard. 2¼" wide. #500360...\$215 ✂

(B) The Pompeii—maple hilt. 2" wide. #500598...\$195 ✂

Overall-28" • Blade-19½" • Wt.-2 lbs. 6 oz.

Originals were excavated from the ruins of Pompeii. You can see examples in H. Russell Robinson's book "What The Soldiers Wore On Hadrian's Wall."

GRECO - ROMAN CRESTED HELMET

This spectacular crested helm originally appeared in a more primitive form in Greece around 350 B.C., but saw its most popular use during the Roman Empire. It saw service with Legionnaires, Centurions and Legates up to 400 A.D. and varied from plain to decorative. Our version is made from hand-worked brass and is adorned with handsome leather accents and a horsehair crest fit for any officer. A must for any reenactor or collector of fine militaria. Wt. 6 lbs. 15 oz. Dia. 12". Circumference 24". Comes lined. Stand not included. Crests not interchangeable. **\$395 Each**

Black Crest...#300156

Red Crest...#300210



Circa 100

ROMAN PUGIO

The distinct shape of the Pugio blade was excellent for a close quarters fight, and was used throughout the legions. No doubt many an old legionnaire must have found it easier to keep his balance with the familiar weight on his hip as he worked his farm in new won territory. A wood hilt is paired with a fully tempered high carbon steel blade. Comes complete with a wood scabbard covered in leather with brass parts. Based on remains in the British Museum. Made by *Windlass Steelcrafts®*. #401392...\$95 ✂

Overall-19¼" • Blade-12¼" long, 2½" wide, ⅜" thick • Wt-1 lb.

Circa 200 BC



FALCATA

The Celt-Iberians of Greek times were justly famed for the Falcata; one of the most devastating swords ever made! The inward curving blade delivers a tremendous blow and could split both shield and helmet. Considered to be of Greek, or possibly Etruscan origin, this sword spread into Southern Russia and also Spain. It was in Spanish hands that it was most feared by the Romans. The blade is made from high carbon steel. The handle is solid brass. Made by *Windlass Steelcrafts*®. Comes with scabbard. #500062...\$195 ✂

Overall-25½" • Blade-20½" long, 2¼" wide, ⅜" thick • Wt.-2 lbs. 14 oz.

CLASSIC HOPLITE SWORD

The Greek Hoplite was a tough, effective citizen-soldier, and was ferocious in defense of his home city. This is the leaf shaped blade that was quite popular throughout the ancient world and is based on many illustrations and excavated examples. Steel guard and pommel, with wood grip covered with leather. High carbon steel blade capable of taking and keeping a razor edge. Wood scabbard covered with leather. One of the finest of the ancient world's weapons. Made by the craftsmen at *Windlass Steelcrafts*®.

#500734...\$165 ✂

Overall-28½" • Blade-22" long, 2½" wide, ⅜" thick • Wt.-2 lbs. 4 oz.

GREEK SPEARHEAD & BUTTCAP

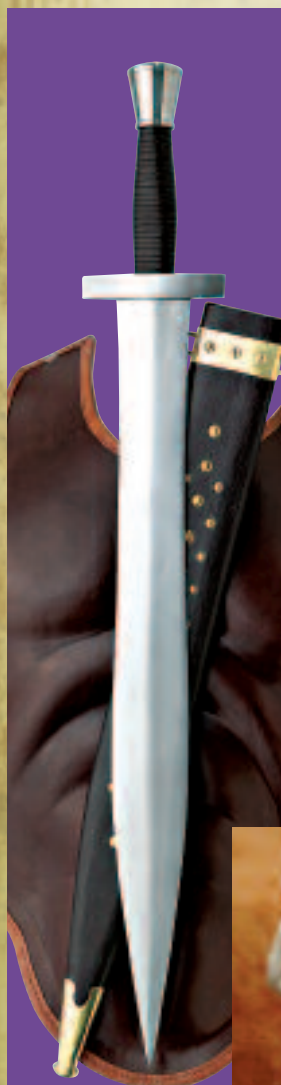
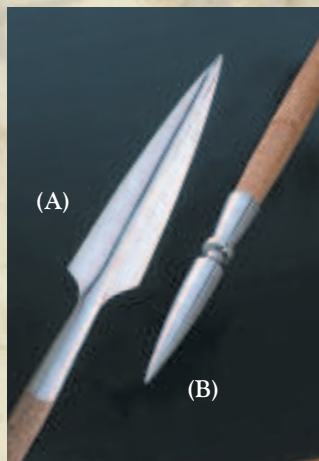
(A) **Spearhead**-the Greek Hoplite's principal weapon was "the long shadowed spear." It was a weapon that varied in length from 6 to 18 feet, and could be used both as spear and pike. The earlier versions were made of bronze, but iron, once it was available, became the material of choice. #600074...\$45

Overall-16" • Wt.-1 lbs. 4 oz

Blade-11" long, 2¼" wide

(B) **Buttcap**-protects the shaft and keeps it from splintering, and gives balance for the spear. #600036...\$22

Overall-8½" • Wt.-1 lbs. 4 oz.



Circa 5th Century BC



(C)



(D)



(E)

GREEK GODS

Museum quality down to the finest details, befitting the mythical gods of Greece. Cold cast resin with porcelain for incredible look and feel.

(C) Zeus-5¼" x 6¼" base x 12" tall. #801466...\$35

(D) Diana-4" x 6" base x 11½" tall. #801464...\$30

(E) Posiedon-Approx. 12½" tall. #801134...\$30

VISIT OUR WEBSITE

WWW.MUSEUMREPLICAS.COM

SPARTAN LAKONIA

There isn't any doubt that the Spartan Army was one of the toughest on record. Although all of the city states of Greece valued honor, toughness, loyalty and fighting ability, the Spartans made it almost a religion, and devoted themselves to being the best of the best. We have copied a Spartan short sword taken from the book, "The Spartan Army". This is a potent weapon that would be superb in the brutality of ancient hand-to-hand combat. The leaf shaped blade is high carbon steel. Grip is bronze, with a wooden scabbard covered in leather. A very effective close combat short sword. Made by *Windlass Steelcrafts*®. #401178...\$145 ✂

Overall 19¼" • Blade-14½" long, 2½" wide, ⅜" thick • Wt.-2 lbs.



Circa
5th
Century
BC

RHONE VALLEY SWORD

Circa
900
BC

Known as a "Rhone Valley" type, this hilt form originates from that area of Switzerland. We have taken the liberty of placing it on a good steel blade of the same size as the original bronze one, making for a very nice short sword. Made by *Windlass Steelcrafts*®. #500954...Reg. \$210...Closeout \$145 ✂

Overall 23¾" • Wt.-3 lbs. • Blade-18¾" long, 2" wide, ⅜" thick

A drawing of this hilt type can be seen in
"The Archaeology of Weapons" by Ewart Oakeshott.

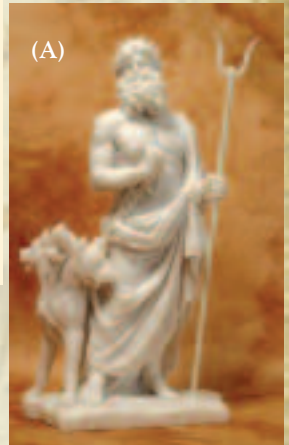


Circa 100

PARAZONIUM

The Greek warrior would carry a dagger, or parazonium, at his belt. This was a vital accessory, as it served both as a last ditch defense weapon as well as a utility knife. Blade is high carbon steel. Guard is steel and wood, with a hardwood grip. Wooden scabbard with leather covering. Made by *Windlass Steelcrafts*®. #401158...\$85 ✂

Overall 15" • Blade-10" long • Wt.-8 oz.



(A)



(B)

STATUES

Museum quality reproduction, elegantly rendered in cold cast resin with porcelain for amazing look and feel.

(A) **Greek God Hades**-Mythological god of the Underworld. Approx.

3½" x 5" base and 11" tall. #801468...\$28

(B) **The Pegasus**-The mythological stallion's detail is so sharp; it appears he could fly right off the cloud base, so catch him while you can. #801470...\$34

GREEK TUNIC

This short cut tunic is perfect for either the market streets or under any Greek armor. The sleeves and bottom hem are accented with a Greek trim which emulates the waves of the Aegean. 100% cotton. Order S/M or L/XL. #100876...\$39





Practical Katana Plus

Perfect for the rigors of daily cutting practice required by many martial art classes devoted to the study of Japanese swordsmanship. The grip of this katana is a full 12 inches long, covered in rayskin and wrapped in leather instead of the more traditional bindings of cloth. The tsuba is a large 3 3/8" with an open pattern to keep its weight down while still providing good hand protection when cutting. Wood scabbard has a hard black textured finish that will hold up better than smooth lacquer. A very tough version of the traditional katana. #500476...\$295

Overall-40 3/4" • Blade-28 3/8" long, 1 1/2" wide, 1/4" thick • Wt.-2 1/4 lbs.

Sword Walking Staff

Inspired by Old World sword walking staffs and its single edged cousin, our new offering hides a full length double-edged Tai Chi sword blade that is well-tempered high carbon steel. Handle and scabbard are lacquered wood. #500740...\$90 ✂

Overall-42" • Blade-29" long, 1" wide, 3/16" thick • Wt-1 lbs. 10 oz.

(Cannot be shipped to CA, MA, NY or Canada)



Shirasaya

This handsome Japanese sword is fitted to a mahogany grip and scabbard that are both endowed with beautiful depth and luster. The hand forged blade is from differentially tempered high carbon AISI 1060 steel. The "mune" (back of blade) is 45° Rockwell and the "ha" (edge) is 58° Rockwell. The "hamon" (temper line) is also *real*. Comes with certificate of authenticity, full cleaning kit with instruction booklet, and a cloth storage bag all packaged in a wood presentation box. Made in Longquan China, a swordmaking center for 2600 years.

#500992...\$250

Overall-39 3/4"

Blade-29" long, 1 1/4" wide, 1/4" thick

Wt-2 lbs. 2 oz.



Kendo Top Hakama Pants

Hakama pants were first worn by Samurai and were adopted for Kendo because they provided great freedom of movement. The kendo top is a heavy, 100% white cotton jacket with 3/4 sleeves, which is suitable for a variety of martial arts. The hakama pants are 100% black rayon with fully pleated legs and koshi-ato in the back, which allows ties for a comfortable fit around the waist. Both pieces available in S/M and L/XL

Top-#100810...\$49 • Hakama-#100812...\$49

FRANK MILLER'S



Working closely from the source material, the amazing graphic novel 300, and with direct consultation with the artist Frank Miller, we proudly introduce a line of fully licensed pieces as he envisioned them.

(A) Cape-Heavy, extra long, distressed 100% cotton. Measures 70" in length. Red only. Dry clean. #881001...\$89

Brooch-A perfect accent piece for your cape, worn by all Spartan warriors. Antiqued brass with leather strap and brass snap. Choose round or rectangle. \$24 each

(B) Approx. 3" dia. #881012

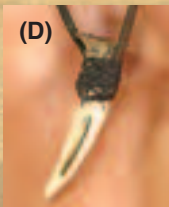
(C) Approx. 3" x 2". #881008

(D) Necklace-Giant 3" wolf's tooth with a 32" leather thong. Resin. #881009...\$20

(E) Briefs-All leather, adjustable rear snaps allow for better fit. Order S/M or L/XL. #881007...\$95

(F) Greaves-This stunning set of greaves completes the full Spartan outfit. **Steel, plated in antiqued brass** with strapping allows for a perfect fit. 24½" tall. #881006...\$160

(G) Sandals-All leather construction with rubber soles and three adjustable ankle straps. Men's whole sizes 7-13. Brown. #100958...\$74





The sword of sparta

Available for the first time, the fully licensed Spartan Sword . Direct from the amazing graphic novel and with direct consultation with Frank Miller, we bring you a battle ready version as only Museum Replicas® and Windlass Studios® can. 1095 high carbon steel, hand-forged and well tempered 24" blade with fuller. A full tang, with traditional peened over construction. Solid steel parts. Wood grip with genuine leather wrap. Includes "battle worn" full grain leather scabbard and baldric. Features full color certificate of authenticity. 30" overall, Wt.-approx. 3 lbs. A wicked blade any Spartan would have cherished in battle! Includes a full color Certificate of Authenticity. #881010...\$195 ✈

Spartan Helmets

Made from the finest authentic materials, these incredible helmets are made of steel and plated in antiqued brass, fully lined in leather with an adjustable liner and chin strap. Full metal.

King Leonidas Helmet-features a genuine horse hair crest. Includes display stand and a full color Certificate of Authenticity, featuring the stunning work of Frank Miller. The helmet measures an impressive 19" in height, truly a helm of a warrior king. Real horsehair. #881003...\$425

Spartan Helmet-Includes display stand and a full color Certificate of Authenticity featuring the stunning artwork of Frank Miller. 12" tall. #881002...\$350



Shield of sparta

This massive shield is made of steel and richly plated with antiqued brass. It is fully lined on the inside and features the traditional leather hand holds. Includes a full color Certificate of Authenticity featuring the stunning work of Frank Miller. The shield measures a full 36" and weighs approx. 17 lbs. Protect yourself and your brother next to you, because this is Sparta! #881004...\$395



Full Metal

Vambraces

A set of steel vambraces plated in antiqued brass with full leather strapping. A perfect arm defense. #881005...\$95



Full Metal

Spearhead and Buttcap

High carbon steel richly plated in antiqued brass. Allows you to fit these on any 1 1/4" dia. shaft of your choice. Sold only as a set. #881011...\$95

Spearhead: Overall 16", 2 1/4" wide • Wt.-1 lbs. 4 oz.

Buttcap: Overall 8 1/2" • Wt.-1 lbs. 4 oz.



© 2007 Frank Miller, Inc. All Rights Reserved.

300, the 300 logo, and all characters featured in 300 and the distinctive likenesses thereof are trademarks of Frank Miller, Inc.



Helmet of Magneto



This full size replica prop is manufactured of metal and has been constructed utilizing the actual film prop (which is housed in the archives of 20th Century Fox) from the motion picture, **X-Men 3**. This amazing collectible has been painted to match the color scheme of the helmet in the film. It has an adjustable padded leather liner, allowing it to fit a variety of head sizes. The movable visor makes it both easy to wear and to remove. The helmet comes complete with an attractive display stand and a full-color, numbered Certificate of Authenticity. **Only 2,006 pieces will be made!** Be the first in your neighborhood to be able to block Professor Xavier's psionic waves! **#885015...\$349**

Less than 300 pieces remaining – get yours now before they're gone forever!



The Cyclops Visor

This collectible has been expertly reproduced from the original prop currently housed in the 20th Century Fox archives. This visor is fully wearable and has a red polarized lens which is normally used to emit the destructive Cyclops



blast. The visor comes with a custom metal storage container with both the X-Men logo embossed and the "Cyclops" name laser etched on the lid. The box lid interior contains a detailed schematic of the Cyclops visor, explaining all the technology and the quartz mechanisms required to control Cyclops' energy. A full color Certificate of Authenticity is included. This collectible will truly make you feel Professor X has given this visor directly to you! **#885001...\$75**



IRON MAN

Helmet of Iron Man - Classic

This amazing full-size wearable helmet has been hand crafted in steel and was reproduced utilizing the original "Tales of Suspense" #39, which was the first appearance of Iron Man. Exactly like Tony Stark's original creation, this helmet has a black padded lining, making it comfortable to wear. Every helmet comes with a full-metal display stand with matching metal rods and name plaque. A full-color, hand numbered Certificate of Authenticity is included. **Only 1,463 pieces will be manufactured!** Prepare for some real "heavy metal" action with this truly awesome collectible! **#885003...\$349**

Watch for a full line of collectibles from IRON MAN the Movie - **Coming Soon!**

Gold Edition Sold Out!



THOR

Hammer of the Mighty Thor

When Mark Millar's **Ultimates** series launched in 2000, it ushered in a whole new retelling of the Avengers' saga. Based on the hammer first seen when Thor first appears in **Ultimates #4**, this gigantic, full-size replica prop is truly made for a thunder god! Measuring a massive 42" in overall length, this reproduction of the mythical Mjolnir is hand crafted in steel, leather and wood. From the unsharpened axe head with a false edge, to the huge hammer head, no attention to detail has been overlooked. The hammer comes complete with an attractive floor display stand, which will allow all onlookers to behold the power of this amazing collectible. A full-color, hand numbered Certificate of Authenticity will be included. **Strictly limited to only 2,000 pieces!** Don't wait for ice giants to kick-in your front door, order yours soon! #885005...\$495



Helmet of Thor - Lord of Asgard

The events which eventually lead to the end of Asgard began with the true death of Odin. Thor, son of Odin, takes up the mantle of rulership and becomes empowered with the mystical Odinfence, making him not only the God of Thunder but the true Lord of Asgard. This powerful helmet is a full-size, metal reproduction produced by **Windlass Studios®**. An attractive wooden display stand with nameplate and a numbered Certificate of Authenticity is included. Strictly limited to 1,000 pieces worldwide! #885002...\$395



The Marvel Vault

The Marvel Vault brings the entire Marvel Universe to you. Share the insider's story of Marvel Comics from 1939 to the present. This book is chock-full of historic reproductions of never-before-seen memorabilia and documents, such as early sketches, Bullpen birthday cards, a membership certificate for the Merry Marvel Marching Society, stickers and stamps to name only a few! A Marvel must! Hard back edition, 192 pages. #801622...\$49

Marvel and all related character names and the distinctive likenesses thereof
TM & © 2008 Marvel Characters, Inc. All rights reserved. www.marvel.com



Robert Jordan's The Wheel of Time™



The Heron Mark Sword From The Wheel of Time™ -series by Robert Jordan, one of the most successful fantasy epics published in the last 25 years. We are very proud to offer a Heron Mark sword. The sword is hand-forged, and of a very tough high carbon steel. The guard and pommel are of brass, and the balance is simply superb. Authorized and approved by Robert Jordan, this sword is an accurate copy of those blades in The Wheel of Time™ series. Once you hold this blade in your hands, you realize how quick and deadly is the sword. A superb example of the swordmaker's art. Scabbard included. Hand made by Windlass Steelcrafts®. Includes Certificate of Authenticity. **#500058...\$275** ✂

Overall-42" • Blade-32" long, 1¼" wide, ⅜" thick • Wt.-2 lbs. 12 oz.

The Wheel of Time™, The Dragon Reborn™ and the snake-wheel ornament are trademarks of Robert Jordan.

Raptor

We have named this new fantasy sword for the fierce prehistoric predator. The pommel is in the form of its deadly claw, but of course, the long curving blade is the real force of this beast. Gracefully contoured parts are steel and the wood and leather grip is adorned with raised areas for a good grasp. Like all our swords, this well balanced cutting sword features a tough high carbon fully tempered blade. Made by **Windlass Steelcrafts®**. Includes scabbard. **#501090...\$215** ✂

Overall-41¼" • Blade-31¼" long, 1½" wide, ⅜" thick • Wt-2 lbs. 9 oz.



Leather & Steel Vambraces



These pieces of armor for the lower arm are made from a double thickness of heavy leather and have antiqued steel riveted on in a decorative pattern. Made by **Windlass Steelcrafts®**. **#200606...\$90 pair**

Visit Our Website:

www.museumreplicas.com



Translucent Pendant

From a land long past comes this circular stone pendant, which has the image of a rampant dragon emblazoned on its translucent blue body. Measures approximately 1½" and hangs from a 24" leather thong. **#200730...\$40**

Wizard's Cloak

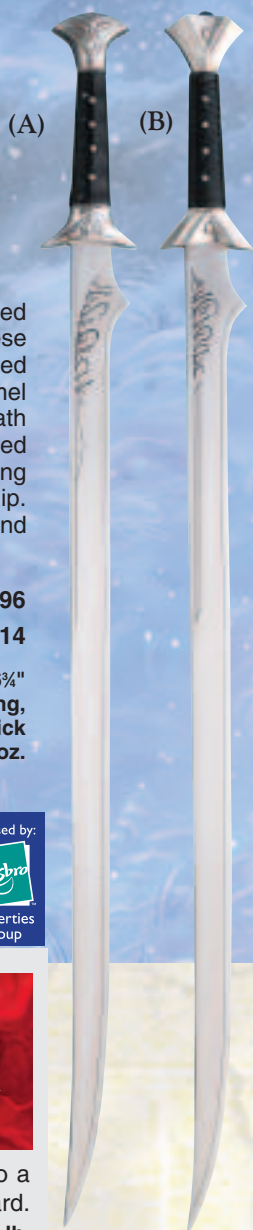
Tall and mysterious in this hooded long cloak, our wizard stands out above them all. The hood and the front openings have an eye catching trim in gold and black. Black cotton velvet. One size fits most. Dry clean only. **#100004...\$139**





R.A. Salvatore's ICINGDEATH & TWINKLE

Museum Replicas Limited™ is proud to have worked with both celebrated author R.A. Salvatore and fantasy illustrator Todd Lockwood in bringing these two swords from the pages of fantasy to the realm of reality. Blades are forged of high carbon steel, and are richly adorned with Dark Elvish script. Pommel and crossguard on both of these scimitars have been silver plated. Icingdeath has been accented with simulated diamonds, while Twinkle has been crowned with a large artificial blue sapphire. Each sword is shipped with a matching scabbard, which will allow you to carry one of these swords on each hip. Comes with a Certificate of Authenticity endorsed by both R.A. Salvatore and Todd Lockwood. Manufactured by Windlass Steelcrafts®. **\$245 Each**



THE SWORDS OF DRIZZT

(A) Icingdeath...#500596

(B) Twinkle...#500514

Overall-36"
Blade-30" long,
1 1/4" wide, 3/16" thick
Wt. 2 lbs. 5 oz.

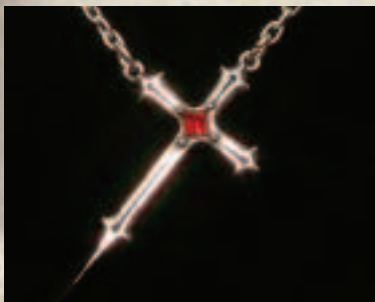


Forgotten Realms, Wizards of the Coast and their logos, and all characters and their likenesses are trademarks or registered trademarks of Wizards of the Coast Inc., in the USA and other countries, a subsidiary of Hasbro Inc. Used under license. © 2004 Wizards of the Coast.



Raven Claw

This wicked knife's hilt is cast metal and the deadly blade is blackened to a deep black luster. Made by **Windlass Steelcrafts®**. Includes scabbard. **#401472...\$95** ✂ Overall-19 1/2" • Blade-13 1/4" long, 1 1/2" wide, 3/16" thick • Wt-1 lb.



Croix Sinestre Pendant

This delicate Victorian grave cross hangs at an unusual angle, making this a truly unique piece for any occasion. The 2" cross is fine pewter with a blood red stone in the center and hangs from a 22" metal chain. Made in England. **#200718...\$21**



Vigilante Dagger

Fight for freedom with this new update of one of our original daggers. Superbly balanced and ready for action. Full tang, hand forged, high carbon steel blade. Steel parts and darkened hand carved wood grip. Includes leather sheath. **#401940...\$90** ✂

Overall-16 1/4" • Wt-15 oz.
Blade-10 3/4" long, 1" wide, 3/16" thick

THE PHANTOM

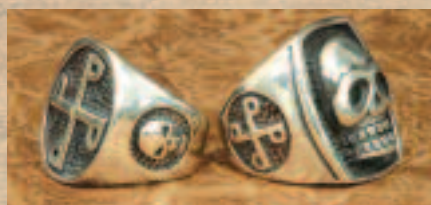
Before Batman, before The Shadow, before The Green Hornet, even before The Lone Ranger, the comics' first masked mystery-man hero had long since been striking fear into the dark hearts of the wicked...The Phantom!



Blocked barrel per gov. safety standards.

The Phantom's 1911 Colt Pistols

Through the years, The Phantom has become efficient with many weapons and forms of fighting, but his weapons of choice are his custom 1911 Colts. These officially licensed, non-firing full-metal guns are functional in every way: the magazine ejects, the barrel slides and the trigger pulls. The custom hardwood, black grips are inset with metal medallions of the symbols from the two famous rings he wears. A full-color display plaque, which can be either hung on a wall or stand freely on a shelf, along with a numbered Certificate of Authenticity is included. Strictly limited to **only 250 sets worldwide!** Made by Windlass Steelcrafts™ and the KIMAR gun factory of Italy. #885023...\$275 set



The Rings of Good and Evil

The two most iconic rings in comic strip history can now be yours! Both the rings of good and evil have been expertly reproduced in **real silver**. Each ring has been emblazoned with the opposing seal on either side and both come complete in their own purple collector's display box with a Certificate of Authenticity. Available in men's sizes; 10 or 12 only. \$75 each

(A) Ring of Good-#885025 • (B) Ring of Evil-#885026



The Phantom's Double Holsters

This is a perfect accessory item for the Phantom's double 1911 Colt pistols. This sleek, double holster is manufactured of heavy, top-grain black leather. The large metal antiqued belt buckle and hidden side Velcro strips, allows for an easy adjustability for a variety of waist sizes. Limited to 250 sets worldwide. Includes Certificate of Authenticity. #885024...\$125



© 2007 King Features Syndicate, Inc.
TM Hearst Holdings, Inc.

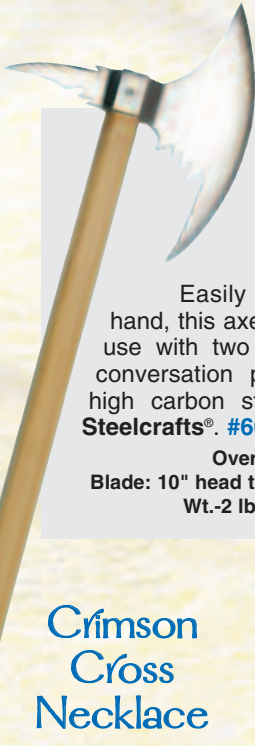
Gatekeeper Coat

From a video game kingdom comes this awesome long coat made of a shimmering nylon with an extra full hood and bell sleeves. The double-action front zipper allows for a variety of different looks. Complete with a chain of accent crosses and keys. S/M or L/XL. **#100948...\$120**



Cyclops Skull

From the land beyond, comes this remnant of a time when horned cyclops walked the Earth. Antiqued cold-cast porcelain. 6" tall. **#801632...\$18**



Barbarian Battle Axe

Easily swung with one hand, this axe is long enough to use with two if desired. A real conversation piece. Made from high carbon steel by **Windlass Steelcrafts®**. **#600758...\$95**

Overall 30"
Blade: 10" head to spike, 10½" edge
Wt.-2 lbs. 8 oz.

Crimson Cross Necklace

This stunning cross measures a full 2½" by 1½" and is inlaid with blood red glass with 11 simulated jewels. Adjustable clasp necklace is 22" and is a combination of antiqued silver colored chain, metal decorations and simulated stones. **#200684...\$24**



Dark Warrior

This new helmet will give any warrior a fearsome aspect as he faces down the most deadly foes. The helm offers good coverage with its full cheek pieces and lower extension that terminate in raised teeth. Adjustable liner with chin strap, 18 gauge steel. Made by **Windlass Steelcrafts®**. **#300426...\$210**



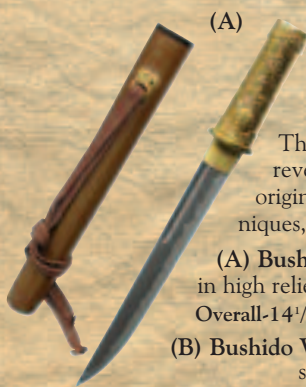
Vambraces & Greaves

These beautiful vambraces and greaves are made from heavy grade leather and though thick, are easy and comfortable to wear all day long. Good for a large variety of outfits. Vambraces are great for use with your bow.

(A) Vambraces-**#200856...\$42**

(B) Greaves-**#200858...\$68**

Samarai Swords Made Like The Originals



(A)



There is no place in the world where the sword has been as revered as in Japan. These premium weapons are made like the originals, using authentic materials, forging and construction techniques, by Hanwei of China. Includes cleaning kit. Includes scabbard.

(A) **Bushido Tanto**-grip is gold plated brass with a battle scene in high relief. Matching saya. #402710...\$435

Overall-14¹/₂" • Blade-10¹/₄" long, 1¹/₄" wide, 1/4" thick • Wt. 11 oz.

(B) **Bushido Wakizashi**-same as the katana with a different battle scene on the tsuba. #501118...\$665

Overall-25³/₄" • Blade-19¹/₂" long, 1¹/₄" wide, 1/4" thick • Wt. 1 lb. 10 oz.

(C) **Classic Bushido Katana**-has a hand-forged and folded K120C powder steel blade, differentially tempered using a traditional claying method to produce a Rockwell of 60 on the edge and 40 on the back. The saya is deeply lacquered in gold with inlaid brass cherry blossoms. The grip is high quality rayskin and bound with premium Japanese cotton. The tsuba is blackened and bronzed iron with a battle scene decoration. #501116...\$965

Overall-40" • Blade-28¹/₄" long, 1¹/₄" wide, 1/4" thick • Wt. 2 lbs. 10 oz.

Buy All 3 (A-C)

For \$1850

(Save Over \$200!)

PLUS Get A FREE

Triple Sword Stand

(you can see it on



Tanto



This beautiful knife has a real rayskin over wood grip. The parts are iron and the saya is finished with a textured lacquer. The blade is hand-forged and folded K120C power steel (similar to 1095) that is differentially tempered. #402712...\$449

Overall-17" • Blade-12" long, 1¹/₈" wide, 1/4" thick • Wt.-1 lbs.



(C)

PRSRT STD
U.S. Postage
PAID
Museum
Replicas
Limited

Museum Replicas LimitedTM

A Division of ATLANTA CUTLERY CORP.

Box 840 • Conyers, GA 30012

® www.museumreplicas.com



Call TOLL-FREE 1-800-883-8838

This code is important for your order.



Gold Dragon Display Stand

This elegant resin display stand will enhance the beauty of your cherished weapon.

10" high x 18¹/₂" long. #801530...\$18



(D)

(E)

(F)

Buy D-F - \$60



Japanese Arrowheads

These Japanese arrowheads, called Yanone, are reproduced from originals in museum collections and were used primarily for presentations or temple offerings with their beautiful piercings and decorations. Singly or in a group these are outstanding collectibles.

(D) **Dragon Cloud**-3" x 2³/₈". #600780...\$21

(E) **Torii**-4¹/₈" x 2¹/₄". #600778...\$25

(F) **Boars Eye**-2³/₈" x 1¹/₈". #600776...\$21