

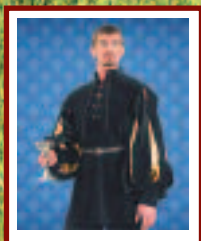


Catalog # 107

\$3.00

*Historically Accurate
Battle - Ready
Weapons & Armor*

*Authentic Period
Clothing, Jewelry
& Much More*



Cavalier Shirt
-see pg. 29



The Spanish Bilbo
-see pg. 36



LARP Helmets
-see pg. 75

Call TOLL-FREE 1-800-883-8838 MuseumReplicas.com

Name _____
 Address _____
 City _____
 State _____ Zip _____

Vambraces & Greaves



Made from heavy grade leather and though thick, are easy and comfortable to wear all day long. Good for a large variety of outfits. Vambraces are great for use with your bow.

(A) Vambraces-#200856...\$42
 (B) Greaves-#200858...\$68



Cyborg Skull

Half man, half machine are melded together in this great piece from some future war. The cold-cast porcelain has been expertly metalized, giving it the look and feel of antiqued steel. 7 1/2" long, 5" wide, 5" high. #801634...\$39

Leather Pouches

Front closures with hand carved camel bone button fronts with loop closure. Black or brown. Fits up to 3" belt loops. 7" wide.



(C) Scalloped-7 1/4" high, #200350...\$20
 (D) Acorn-6 1/2" high, #200298...\$18

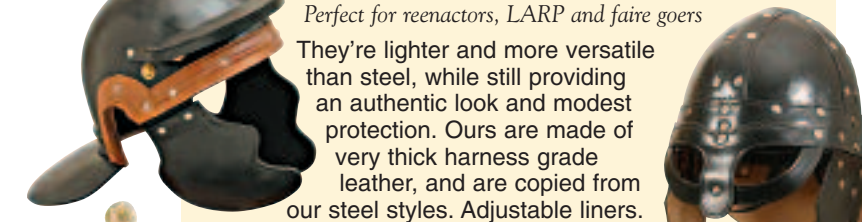
DEALER INQUIRIES

WELCOME 1-800-241-3664 Ext. 46

Prices in this catalog supersede prices in earlier catalogs and are subject to change without notice.
 We are not responsible for typographical errors.

PLEASE PUT
 STAMP HERE
 Post Office
 Will Not Deliver
 Postage
 Due Mail

Leather Helms

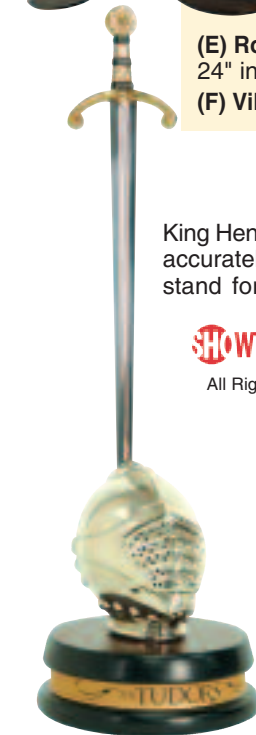


Perfect for reenactors, LARP and faire goers. They're lighter and more versatile than steel, while still providing an authentic look and modest protection. Ours are made of very thick harness grade leather, and are copied from our steel styles. Adjustable liners.

(E) Roman Trooper-Approx. 1 1/4 lbs. 24" inner cir. #200548...\$120
 (F) Viking-Approx. 1 1/4 lbs. 25 1/4" inner cir. #200494...\$110

Tudors Letter Opener

King Henry's royal ceremonial sword and jousting helm have been accurately reproduced in a beautiful miniature letter opener and stand for any king in your household. 8 1/2" tall. #882001...\$48



SHOWTIME is a registered trademark of Showtime Networks, Inc., a CBS Company. © 2008 Showtime Networks, Inc. All Rights Reserved. "The Tudors" © 2008 TM Productions Limited/PA Tudors, Inc. An Ireland-Canada Co-Production. All Rights Reserved.



Bible Coins

Minted from originals, these accurate looking and maybe more important, feeling, coins are as close as you can get to trading the actual currency from eras gone by. All coins are solid cast metal with accurate patina, thickness and weight. Perfect for teachers, reenactors and collectors. Made in the USA. \$10 ea.

(G) Coins of the Bible Set 1-covers 37 B.C. - 37 A.D. and includes Herod The Great, Shekel of Tyre, Herod Antipas, Stater of Antioch, Widow's Mite and Tribute Penny of Tiberius. #801694

(H) Coins of the Bible Set 2-covers 66 A.D. - 133 A.D. and includes Dilepton Simon Nasi, Shekel, Judea Capta, Denarius, Quarter Shekel and Shekel Bar. #801692



SAVE \$99

BATTLE OF DOVER SWORD

Carved Solid Hardwood Grip
 Fluted Pommel
 Antiqued Brass
 High Carbon Steel Blade
 Includes scabbard
 #501076...Reg. \$239...
 Closeout \$140
 Overall-40"
 Blade-33" long, 2" wide
 Wt-3 lbs. 9 oz.



SAVE \$64

EUROPEAN DUELING SWORD

Hand Carved Horn Grip
 Steel Parts
 Antiqued Brass
 High Carbon Steel Blade
 Includes scabbard
 #501154...Reg. \$219...
 Closeout \$155
 Overall-41 1/2"
 Blade-35 1/2" long, 1 1/4" wide
 Wt-2 lbs.



SAVE \$66

GERMAN SWORD

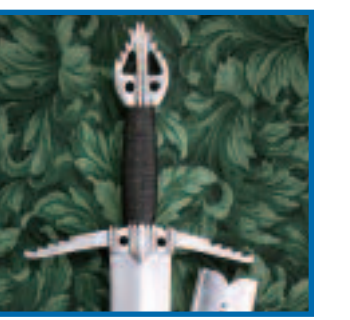
Hand-And-A-Half
 Hand Carved Steel Furniture
 Leather Covered Wood Grip
 High Carbon Steel Blade
 Includes scabbard
 #501066...Reg. \$265...
 Closeout \$199
 Overall-44 1/2"
 Blade-33" long, 2" wide
 Wt-3 lbs. 8 oz.



SAVE \$90

BATTLE OF NICOPOLIS SWORD

Cut-And-Thrust
 Steel Pommel & Guard
 Wood Grip W/Leather
 High Carbon Steel Blade
 Includes scabbard
 #501022...Reg. \$235...
 Closeout \$145
 Overall-38 1/2"
 Blade-32" long, 1 1/4" wide
 Wt-2 lbs. 2 oz.



LATE SPANISH SWORD

Steel Parts
 Wood Grip Leather Wrapped
 Well-Balanced Sword
 High Carbon Steel Blade
 Includes scabbard
 #501048...Reg. \$245...
 Closeout \$147
 Overall 42 1/4"
 Blade 34" long, 1 1/4" wide
 Wt-2 lbs. 7 oz.



SAVE \$100

SWORD OF CORTENUOVA

Brass Parts
 Wood Grip Leather Wrapped
 Well-Balanced Sword
 High Carbon Steel Blade
 Includes scabbard
 #501096...Reg. \$265...
 Closeout \$159
 Overall 38 1/2"
 Blade 32" long, 2 1/4" wide
 Wt-3 lbs.



Nehru SE

Stylish full-length flowing garment is manufactured of 100% black wool, has a tapered waistline cut for a true form-fitted look and has all buttons covered in a rich black fabric. Fully lined. S, M, L, or XL. Dry clean only. #100698...Reg. \$149...Closeout \$99 Limited Quantity Available

Universal Sword Hanger

The perfect display option for most of our swords, this sword hanger is made from polished steel and has an adjustable bracket. On top is a hole for a nail or screw. Once you hang the sword, the hanger practically disappears taking nothing away from your beautiful edged weapon collection. #801586...\$12
 3 or more \$10 each



Sword not included.



SAVE \$90

CRUCIFORM SWORD

Steel Parts
 Wood Grip W/Leather
 Fully Tempered
 High Carbon Steel Blade
 Includes scabbard
 #501104...Reg. \$235...
 Closeout \$145
 Overall-39"
 Blade-33" long, 1 1/4" wide
 Wt-2 lbs. 12 oz.



SAVE \$100

PIRATE KING CUTLASS

Cup Guard W/Piercing
 Wood Grip Covered With
 Leather & Wire
 High Carbon Steel Blade
 Includes scabbard
 #500964...Reg. \$255...
 Closeout \$155
 Overall 32"
 Blade 25 1/4" long, 1 1/4" wide
 Wt-2 lbs. 6 oz.



SAVE \$50

OVAL SHIELD

Front Covered
 With Leather
 Jerusalem Cross
 Brass Rivets
 Adjustable Arm Strapping
 On Back
 #801506...Reg. \$135...
 Closeout \$85
 (\$5 add. s/h)
 20 1/4" x 31 1/4"
 Wt-7 lbs. 5 oz.

Museum Replicas Limited
 Box 840
 Conyers, Georgia 30012-0840

RENAISSANCE HUNTING SWORD

Cut and Thrust Swords that were used for the hunt were much like those used in war. They were used for dispatching large game, like boar and deer, as well as providing some protection from the unemployed mercenaries that roved across the countryside of Europe and had turned to robbery. Nicely shaped steel parts compliment an effective blade. Lower section of the grip is wood covered with black leather. Leather and steel scabbard is included. Made by **Windlass Steelcrafts®**. #501209...\$195 ✂

Overall-41 3/4" • Blade-35 1/4" long, 1 1/2" wide, 3/16" thick • Wt. 2 lbs. 12 oz.

TUDOR CLOSE HELM

This is the classic form most often associated with the image of a knight. During Henry the VIII's wars in France (1522-1523), this form of helmet would have been in use on both sides. This excellent reproduction by the fine craftsmen of **Windlass Steelcrafts®** is fully wearable. The term Close Helm refers to the fact that this type locks firmly around the head for complete protection, with a very narrow field of vision to expose the eyes as little as possible. The visor is pierced with key-holes on both sides for good air flow during combat. The lower bevor section is split into two overlapping pieces that are hinged at the sides and hook together at the chin while the visor locks down firmly over it. Made from 16 gauge hammer hardened steel. #300432...\$225



KNIGHTLY JEWELRY

These lead-free metal fashion pins show great detail and have a rich antiqued pewter finish. Looks great as a cape pin for men or women, they also look wonderful gracing m'lady's gowns. \$30 each

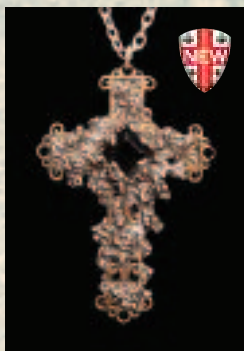
Half Suit Of Armor-3 1/2" x 2". 2 1/2 oz.
#201038

Helm-1 5/8" x 1 5/8". 2 oz. #201037



ONYX CROSS

Brass wrought English cross and onyx stone, overgrown with creeping ivy of fine pewter. Cross measures 2 1/2" tall with a 21" chain with clasp. Hand made in England. #201030...\$49



GALLANT KNIGHT STATUE

This mounted High Middle Ages knight in a triumphant pose is highly detailed and meticulously hand painted. One of the most well-done we have seen yet, and at this great price we were able to pass on to you, it's a must have piece. 8 1/2" tall by 13" long including lance. #802266...\$24



CHIOGGIA SWORD

We have named this impressive Italian sword for the Battle of Chioggia, where the Venetians totally crushed the Genoese forces and ended Genoa as a great sea power. This is a very well-balanced and fast sword with its deeply fluted pommel and beveled guard, both from steel. The grip is wood covered in leather with decorative studs. The well-tempered high carbon steel blade is nicely fullered and the perfect length for a one-hand sword. Comes complete with nicely decorated scabbard. Made by Windlass Steelcrafts®. #501164...\$215

Overall-39" • Blade-32" long, 1 1/8" wide, 3/16" thick • Wt.-2 lbs. 12 oz.



**CIRCA
1379**

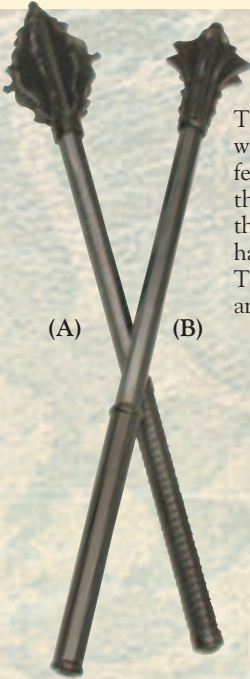


MACES

These two heavy maces, which evolved from man's oldest weapon, the club, could make short work of armor. With a few full sound blows the best of plate would be so damaged that the wearer's movement would be greatly impaired, and that led to a quick defeat. Both of these handsome examples have 8 flanges and are made from steel and powder coated. The bottoms of the shafts are wrapped in black leather for an improved grip. Made by Windlass Steelcrafts®. \$95 Each

(A) Italian-#600624 • (B) German-#600626

Overall-24" • Wt.-4 lbs.



KNIGHTLY RIDING CAPES

Two-colored, heavy natural white cotton hooded capes with either a deep red or black lining. Perfect to match and wear with any of our period tunics. Neck chain. One Size #101026...\$85



CIRCA 1390

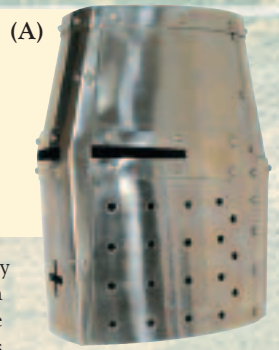
POIGNARD

A forerunner of many long parrying daggers of later years, its long reach made it very effective. It saw much use in its own day as a back-up weapon on the battle-field and was carried at court when swords were forbidden, for they made formidable weapons in the hands of an expert. Includes scabbard. Made by Windlass Steelcrafts®. #401726...\$85

Overall-20 1/2" • Blade 14 3/4" long, 1 3/8" wide, 3/16" thick • Wt.-1 lb. 4 oz.

KNIGHTS TEMPLAR

(A) **Crusader Helm**-Developed early in the 12th Century, the Great Helm became the mainstay of the medieval fighting man, and lasted for about 300 years. Worn over a mail coif and padding this helm has menacing, narrow eyeslits for maximum protection. Made by **Windlass Steelcrafts®** from 18 gauge steel. #300418...\$185



Tunic Detail

(B) **Templar Tunic**-This heavy cotton sleeveless tunic has been dyed a bright white. The Order's Maltese styled red cross has been applied over the heart, while a full linen lining has been sewn on the interior. Dry clean only. Choose S/M or L/XL. #100936...\$65

(C) **Templar Cape**-This long matching cape is one of the heaviest and most elegant we have ever offered. The stark white color is offset with a large red cross on the left side, while the interior boasts a matching red lining. Heavy cotton with corded tie. One size. Dry clean only. #100938...\$145



(D)



(D) **Medieval Sword & Tunic Belts**-Colorful 70" long belts for both your tunic and your sword. Belt looks great worn over tunics. Belt will accommodate most frogs. All belts are heavy grade leather.

Red Belts-Have antiqued brass Maltese crosses.

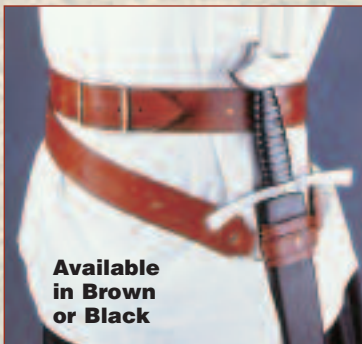
Wide-(1"). \$85 • Thin-(2"). \$70
Wide-#200680 • Thin-#200878

Blue Belts-On closeout. Have antiqued silver crosses.

Wide-(1"). Closeout \$75
Thin-(2"). Closeout \$60

Wide-#200682 • Thin-#200880

🔪 Items displaying this icon can be sharpened for additional charge.



Available in Brown or Black



TEMPLAR SHIELD

High quality shield is made of a curved wood and heavily padded with a durable canvas. The black and white shield has adjustable arm straps and padded arm guard on the back. The canvas is also good for painting your own design. 22 1/2" x 25" tall. #801570...\$145

\$5
addl. s/h.
Cannot ship air.

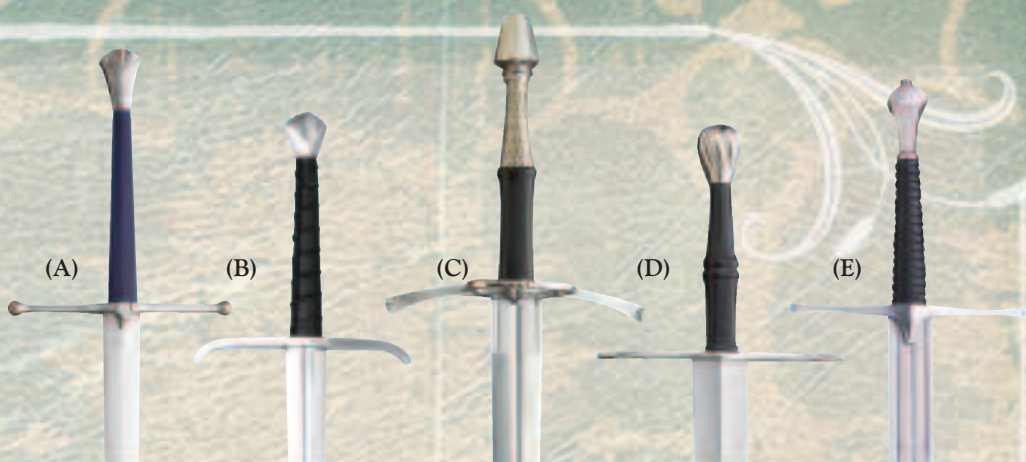
MEDIEVAL DOUBLE WRAP BELT

From the early B.C. Celts to well past the Renaissance, warriors figured out that a double wrap belt was a more comfortable way to carry a sword. When the extra length of belt wraps around a body the second time, both hips then support the weight of the sword. Includes a frog hanger that will fit all scabbards. Made of beautiful top grade leather. **Brown** with brass or **black** with nickel silver studs and buckle. 1 1/4" wide. Specify S, M, L or XL. #200454...\$52

TEMPLAR FLAG

A striking 3' X 5' nylon indoor/outdoor with grommets, this flag is emblazoned with the red cross of the crusades and four crosses of the Templars. #801444...\$12





VISIT OUR WEBSITE FOR MORE MEDIEVAL SWORDS

- (A) English Two-Hand Sword-#501060...\$285 ✂
- (B) Great Ouse River Sword-#501158...Reg. \$245...Catalog Special \$199 ✂
- (C) 15th Century Longsword-#500800...\$245 ✂
- (D) Erbach Sword-#501058...Reg. \$265...Closeout \$215 ✂
- (E) Sword of Roven-#500794...Reg. \$245...Catalog Special \$199 ✂

Visit our website: museumreplicas.com for full descriptions of above swords.



CRUSADER FLAG

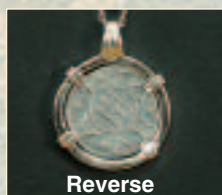
The red cross of the Crusades is accented by the gold cross of Jerusalem. Double sided, indoor/outdoor nylon. 3' x 5' with metal grommets. #801742...\$12

TEUTONIC KNIGHT ENSEMBLE

The German Order of the Teutonic Knights was formed at the end of the 12th century and played an important part in the defense of Acre during the Third Crusade.

Teutonic Tunic-Rich heavy natural cotton sleeveless tunic has the black cross of the order sewn to the front and has a linen lining to the interior. Dry clean only. Choose S/M or L/XL. #100870...\$65

Teutonic Cape-This long matching hooded cape has the Teutonic black cross sewn over the left shoulder. Heavy cotton with corded tie. One size. dry clean only. #100872...\$90



CRUSADER COIN PENDANT

This is a replica of a silver Denaro minted from the time of Conrad III, King of Italy (1127-1152). This rare crusader coin has been recast and placed into a sterling silver setting with an 18" silver chain, making it a stunning pendant. The necklace is presented in a beautiful red box, with a silver cross on the lid. Comes with a Certificate of Authenticity. Measures 1 1/4" across. #888001...\$30



BATTLE AXE

**Circa
1100**



The axe is almost as old an implement as the club. Metal axe heads were among the first handiworks created during the Copper Age. With all this history it is easy to see why a Medieval warrior would choose a good axe for battle. This axe has a back spike to add to its effectiveness as a weapon of war. The steel head is pinned to a hardwood shaft that is curved at the end on this one hand axe. Made by **Windlass Steelcrafts®**. #600754...Reg. \$110...Catalog Special \$90

Overall-23 1/4" • Head-6 1/4" x 9 1/2" wide. 3/16" thick • Wt.-1 lb. 8 oz.

WELSH DRAGON FLAG

The royal standard of Wales. Indoor/outdoor nylon. 3' x 5' with metal grommets. Flag is double sided. #801448...\$12



LATE NORMAN HELM

Moveable nose guard, aged 18 gauge steel, adjustable liner and chin strap. #300370...\$190



KNIGHTLY BELTS

These two belts are the perfect choice for almost any medieval knightly outfit. The extra long 80" heavy grade leather is gorgeously accented with antiqued brass roses and heavy duty buckle. \$95 each

Black-#200676 • Brown-#200678

TEMPLAR ROBE

Worn as both a robe and tunic A red cross is fully embroidered onto the 100% white cotton body. Dry clean only. Order S/M or L/XL. #100868...Reg. \$60...Closeout\$45
XXL...Reg. \$65...Closeout \$50



**CALL TOLL-FREE
1-800-883-8838**

BLACK LEATHER AXE HOLDER & FROGS

Designed to fit most any belt, our frogs for axe, broadsword and dagger are hand crafted of durable, full grain leather replete with nickel plated, metal studs. \$15 Each

(A) **Axe Holder**-boasts an oversized nickel plated ring for cradling the head of even the heaviest axe. #200028

(B) **Dagger Frog**-a jaunty, but secure carrier for dagger or dirk. #200276

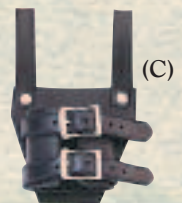
(C) **Broadsword Frog**-with its ingenious dual strap design, this frog will support both broadsword and scabbard. #200084



(A)



(B)



(C)



CIRCA 1200

SWORD HILTED DAGGER

Large daggers were carried by knights and men-at-arms and were used

for camp chores, but mainly on the battlefield, where they were often the last line of defense. This classic form has a steel wheel pommel and down curving guard. The grip is wood covered in leather and the wide, strongly pointed blade is from tempered high carbon steel. Includes matching scabbard. Made by **Windlass Steelcrafts®**. #402556...\$90 ✂

Overall-17³/₄" • Blade-12" long, 1³/₄" wide, ³/₁₆" thick • Wt.-1 lb. 4 oz.

MAIL GAUNTLETS

To protect the back of the hand, we have added mail on our black leather gauntlets and also placed slightly cupped steel lames all around the cuff. These offer good protection to the hand, wrist and lower arm from a sword slash or draw cut. Historically correct from the Early Middle Ages well into the Renaissance. XS, S, M, L or XL. #300008...\$75



(A)



(B)

TUNICS & CAPES

(A) **Crusader's Cape**-This long hooded cape has a red cross embroidered on the left shoulder. Heavy cotton with corded tie. One size. Dry clean only. Shown with Robert De Sable Tunic on pg. 68. #100584...\$95

(B) **Hospitaller Tunic**-Worn by the Hospitaller Order, this black heavy cotton long sleeved hooded tunic has a white cross embroidered on the front and ships with a corded rope belt. Comes complete with strips of aged chain mail attached in front and back to give the illusion of a full mail skirt being worn underneath. Dry clean only. Choose S/M or L/XL #100588...\$180

(C) **Hospitaller Cape**-This dark brown matching hooded cape (for B above) is a heavy cotton with a fully embroidered white cross on the left shoulder. Dry clean only. One size. #100590...\$95

Swords, Scabbards and Mail not included. See pg. 19 for our full line of Chain Mail & Coifs.

EUROPEAN CRUSADER

Resin man of war shows incredible detail and attention to historically accurate arms and dress. Each is painstakingly hand painted with several overcoats to give the depth that is normally only seen in high end figures that sell for far more money. Approx. 4" tall. #802121...\$12

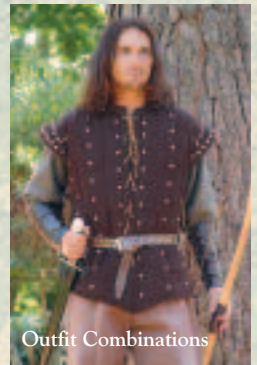
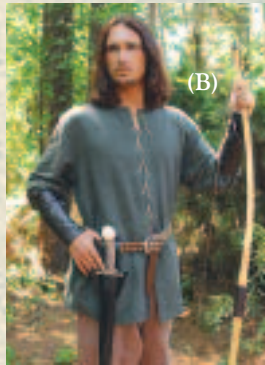
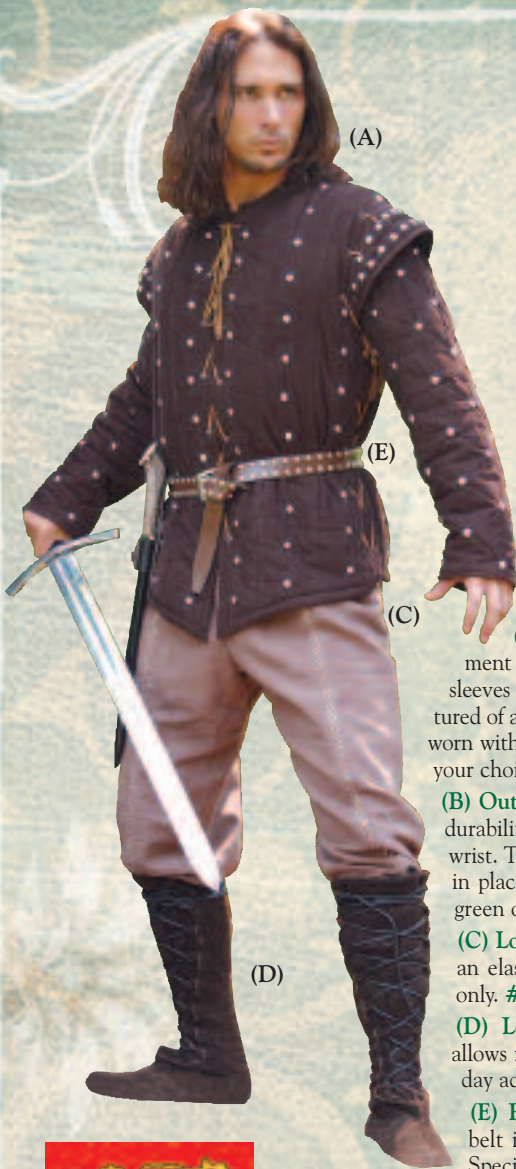


WINDLASS RUSTBLOCKER

Fight the high cost of rust with the same vapor phase corrosion inhibitors (VpCI) developed for the military. The metal seeking vapors in Windlass Rustblocker form an invisible layer of electro-chemical inhibitors that seal metal against the air and moisture. Easy spray-on application removes dirt & grime and seals bare metal for long lasting protection. Perfect for all metal products including knives, swords, axes, firearms or any metal part requiring cleaning and corrosion protection. #801488...\$10 No express shipping.



Legends Of Sherwood



Outfit Combinations

(A) Robin of Locksley Gambeson-This heavy two-piece garment consists of a corduroy undershirt with padded and studded sleeves and a quilted sleeveless gambeson. Both pieces are manufactured of a chocolate brown corduroy. The gambeson portion can also be worn with either the Outlaw Shirt shown on this page or a garment of your choice. S/M or L/XL. **Brown** only. #100476...\$95 XXL...\$100

(B) Outlaw Shirt-tough heavy cotton weave fabric offers long lasting durability. The shirt has a leather lace-up front and buttons on the wrist. This piece can be worn by itself or under the Locksley Doublet in place of the studded corduroy shirt. S/M or L/XL. Deep hunter green only. #100472...\$39 XXL...\$44

(C) Locksley Pants-Made of a durable heavy cotton, the pants have an elastic waistline, allowing for an easy fit. S/M or L/XL. Brown only. #100474...\$36 XXL...\$41

(D) Locksley Boots-Suede, calf-high boots. The lace-up front allows for a good solid fit. A hard sole has been added for long all-day adventures. Brown only. Men's sizes 7-13. #200554...\$85

(E) Robin Hood Belt-A perfect addition to the Gambeson, this belt is manufactured of top grade leather and is nickel studded. Specify S, M, L, or XL. #200576...Reg. \$36...Closeout \$27



LIONHEART FLAG

The royal standard of King Richard I of England. Indoor/outdoor nylon. 3' x 5' with metal grommets. Flag is double sided. #801430...\$12

Includes FREE
Arming Cap While
Supplies Last - No
Style Choice



NORMAN HELMET

The Normans spread to England, Sicily and parts of Italy as mounted warriors known for their long mail hauberks, kite shields and conical helmets. This type of slightly curving forward peaked helmet is the second most recognized form. The conical shape allows blows to slide off. The face was provided some protection with the nasal piece which still allowed great vision. Has a handsome aged finish and adjustable liner. #300424...Reg. \$165 ...Catalog Special \$150

CRUSADER SHIELD

This solid shield measures a full 32" x 20" and is made of curved wood, covered in a white canvas with a red (color may vary) painted cross emblazoned on the front. Leather arm and shoulder straps. #801508...\$185 \$5 addl. s/h

Cannot be shipped by air



CLASSIC MEDIEVAL SWORD

This sword is an Oakeshott Type X with a Type I pommel and a Type VII crossguard. The long and wide fuller on this blade lightens the sword overall and makes it possible to deliver fast and shearing cuts. The long guard offers good protection from an opponent's shield or blade while the classic wheel pommel brings the sword very nicely into balance. This type of sword was in service for a long period of time throughout all of Europe. Made by *Windlass Steelcrafts*®. Includes scabbard. #500020...\$195 ✂

Overall-39½" • Blade-33" long, 2" wide, ⅜" thick • Wt.-3 lbs.



TRANSITIONAL HELMET

This is one of the first attempts to protect the face with more than just a nasal extension or a mail coif. This helm continued on to become the complete head protection of the barrel helm. 18 gauge steel. Stand included. #300394...Reg. \$185...Catalog Special \$165 (\$5 addl. s/h)

Includes FREE Arming Cap While Supplies Last - No Style Choice

(A)



MEDIEVAL BOOTS

These well-made boots are cut from the best glove-tanned leathers and have an all-suede finish. They're very warm and comfortable. Inside is a ⅝" thick, cushioned insole. What's even better is that they have a hard sole, so you can wear them all day long at fairs and festivals. With a little judicious decorating, they can range from Viking to Scythian, from the Franks to the Renaissance. Men's sizes 7-13. Choose **brown** or **black**.

(A) Low Boot-\$49 With Fringe-#100294 • Without Fringe-#100322

(B) High Boot-\$68 With Fringe-#100256 • Without Fringe-#100282



(A)

(B)

(D)

(E)



(C)

RICHARD THE LIONHEART

(C) **Helm With Crown**-Made from 18 gauge steel with brass details and has a beautiful brass crown. Open faced for good vision and easy breathing. Crown permanently attached to helm. Adjustable liner with chin strap. Truly a regal helm. #300420...\$169

(D) **Tunic**-This magnificent tunic is made of a rich red cotton velvet and has the king's original coat-of-arms, the double gold rampant lions emblazoned on the front in stunning embroidery. The tunic has an opening in the front and back for easy riding. Choose S/M or L/XL. #100806...\$59 XXL-\$64

(E) **Medieval Long Belt**-Made of a thick, top grain leather, it is richly adorned with antiqued and polished brass accents, buckles and belt tip. Brown only. One size: approx. 70". #200672...\$110



MAID MARIAN GOWN

The beauty of this timeless legend is beautifully encapsulated in this stunning full-length gown. The elegant silver gray fabric is lined with a matching rayon, while the sleeves are made of a lace-up brocade. Hand beaded trim, a period length belt and matching veil with circlet make this a stunning medieval ensemble. Order S, M, L or XL **#101044...\$155**

LORD OF HUNTINGDON ENSEMBLE

(A) Green Over Tunic-can be worn alone or with any under garment. The "archer's" sleeves fall freely open when your arm is raised, while the full hood allows for perfect anonymity. Both tunic and hood are edged with a brown medieval trim. 100% cotton. S/M or L/XL. **#100986...\$90**
Vambraces can be found on pg. 58.

(B) Brown Under Tunic-is a great piece of medieval clothing suitable for feast or everyday wear. Combined with the green over tunic, the two make for an adventurous combination. Eyelets with leather lace embellish the collar. 100% cotton. S/M or L/XL. **#100988...\$45**



CELTIC KNOT NECKLACE & BRACELET

This matching pair of jewelry is a great complement to any medieval ensemble. Stainless steel wire formed to make a classic Celtic knot. Easy adjustment to fit most sizes.

Necklace-
#201034...\$20

Bracelet-
#201033...\$10

**CALL
TOLL-FREE
1-800-883-8838**

NOTTINGHAM ENSEMBLE

(A) Nottingham Hat-A great addition to many different period outfits. Made of an artificial, lightweight faux suede. Black with red piping. (Feather NOT included). One size. #101099...\$49

(B) Nottingham Jacket-This magnificent overcoat is made of heavy black suede and features padded shoulders and collar, eight hanging tassets and a dual row of false chest lacing and a lace-up front, both using a red leather string. Order S/M or L/XL #101061...\$195

(C) Nottingham Shirt-A generous period black cotton shirt, with embroidered red crosses on both the high collar and cuffs. Hook & eye closure on neck. Black only. S/M or L/XL #101059...\$54

Ensemble shown with our black cotton velvet pants (pg 17) and our captain boots (pg 23)



EUROPEAN LONGBOW

(D) This bow is made by skilled craftsmen in Poland, who are a leading supplier of archery equipment. The wood is comparable to ash, has a hand rubbed finish and measures a full 70" in length. The genuine leather wrap grip can be shot left or right-handed. This classic bow has an approx 35 lbs pull weight and 28" draw. Includes bow string. This set also includes 2 traditional forged Medieval Needle Bodkin tipped arrows with precise fletching (arrows will have either red or black accent, sorry no choice). Each arrow measures 29". The pull weight is perfect for target practice, re-enactors & some LARP events (check local restrictions). \$10.00 additional shipping with this item, cannot be shipped express, air or through the US Postal Service. #600806...\$240

(E) Arrows-This set of 3 traditional Medieval Needle Bodkin tipped arrows has precise fletching (arrows will have either red or black accent, sorry no choice). Tips are forged in Germany, each arrow measures 29". Set of 3. #600804...\$50

Bow String-Not shown. Replacement strings for our European Longbow #600808...\$12



MEDIEVAL RING CROSS PENDANT

This cross is based upon the relics of an Anglo-Saxon Northumbrian saint. With blue enamel inlay & blue crystal. Includes a 22" metal chain with clasp. Made in England. #200720...\$22

GERMAN WAR HAMMER

Replicated from an example in the German National Museum in Nuremberg. Steel head is secured to the hardwood shaft with steel langets. Brass tacks provide a more secure grip. Made by Windlass Steelcrafts®. #600366...\$69

Circa 1350

Overall 21½" • Head 1" x 5" • Wt.-2 lbs.



PERIOD TIGHTS

These rugged tights will complete just about any period outfit. Made from a soft stretchable 100% cotton, these tights have an elastic waistband and boot stirrups allowing for a comfortable, all-day fit. Colors available in Brown, black or gray. S, M, L, or XL. #100934...\$28

GLASTONBURY GRAIL

This grail-formed goblet, rich with Celtic design, has two large abalone cabochons mounted on either side. This stunning cup has a polished mirror finish on the outside and a brushed metal interior. Pewter and measures 6" high. Safe for drinking. Made in England. #801566...\$95



Circa 1250

BELT DAGGER

This dagger is a nice size for everyday chores and is just right for the feast table. Well balanced, polished hardwood grip with steel guard and pommel. Black leather scabbard with steel throat and tip. Made from fully tempered high carbon steel by Windlass Steelcrafts®. #401386...\$85 ✂

Overall-13¼" • Blade-8" x 1" x 3/16" • Wt-10 oz.



MONK'S ROBE

This may be the most versatile and modest garment one could own, but don't let its simple looks fool you, the person wearing it has most likely earned it through religious, magical or other secretive means. It was a mark of humble accomplishment and immense power. Rough textured fabric is 100% heavy cotton weave and generously cut for the most devoted. Includes long tail hood and waist cord. One size fits most. Dry clean only. Choose **brown, green or black.** #100298...\$95 XXL-\$100

LEGENDARY TUNICS

Nobly leaping from the pages of literature, comes two magnificent tunics. Inspired by Howard Pyle's classic story of chivalry, *Men of Iron*. Both tunics are 100% cotton with a linen lining. Order S/M or L/XL.

King Arthur-regal sky blue tunic of King Arthur, with its three applied embroidered heraldic golden crowns, relives the many tales of Sir Thomas Malory's *Le Morte d' Arthur* and the legendary Knights of the Round Table. #100968...\$75

Falworth-black outer surcoat emblazoned with a blood red griffin and a matching red lining. #100970...\$75



KNIGHTLY HEADBANDS

A perfect compliment to any mail coif. Bands are stretch velvet, laced with a gold trim. Six gold laces in the back allow you to tie it securely. Black, Red or Blue. #100992...\$24 each



GOLD KING'S CROWN

Throughout the course of history, the most iconic piece of apparel that has defined royalty has been the crown. This magnificent piece is manufactured of metal, has over 250 artificial diamonds and measures a full 24" in circumference. With little effort, this piece can be shaped for almost any size head. #200984...\$120



ARCHER'S AXE

Archers always carried a in-close fighting sidearm and an axe like this one was a perfect choice as a good worker and weapon. The flat poll was good for hammering in stakes that were often used as a defensive line, and then the blade could be used to sharpen them. This is a basic European pattern that was carried and used by infantry as well as mounted warriors as its design is just so practical for all kinds of uses in the field, as well as war. Tempered steel head on a good hardwood shaft. Add this highly functional piece of history to your collection or war kit. #600798...\$60

Circa 1300 • Overall-20" • Blade-4¾" x 3¾" • Wt.-1 lb. 8 oz.

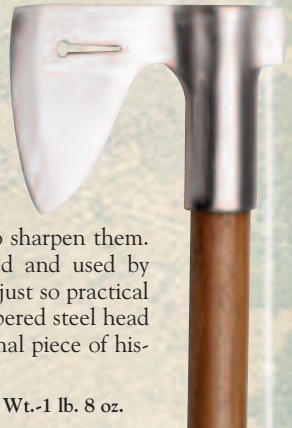
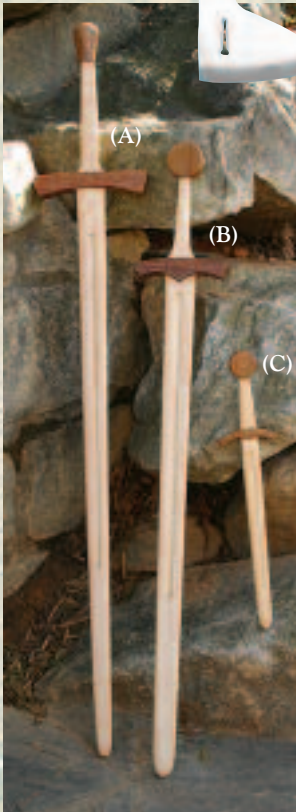
MEDIEVAL PRACTICE WEAPONS

A wooden sword or "waster" allowed a warrior to practice full combat safely and economically while preserving his precious steel for the real battle to come. Fully seasoned and hand crafted in solid hardwood, with contrasting wood guard and pommel. Can take the abuse of sparring and reenacting, even edge-to-edge. (Keep in mind, however, that wood can break along the grain.) These represent edged weapons common from the 12th to 15th centuries.

(A) Two Hand-48¼" overall. 37" blade, 2" wide. Wt. 1 lb. 4 oz. #600598...\$45

(B) One Hand-38¼" overall. 31¼" blade, 2" wide. Wt. 1 lb. #600600...\$39

(C) Dagger-17¼" overall. 11½" blade, 1½" wide. Wt. 5 oz. #600602...\$29



Falchion



CIRCA
1250-1300

The single-edged falchion was favored by a great many knights and men at arms. The wide cutting blade was quite effective against mail. Although the falchion was intended primarily to be a cutting weapon, the development of the point was not ignored. This example has a very strong point that would penetrate mail with a hard thrust. A well-designed fighting weapon. Made by **Windlass Steelcrafts®**. The blade is tempered high carbon steel, the guard and pommel are both steel, and the grip is wood, covered with leather. Complete with a leather scabbard. #500204...Reg. \$185...Catalog Special \$165 ✈

Overall-34" • Blade-28" long, 1 3/4" wide, 3/16" thick • Wt. 3 lbs.

Soldier's Dagger

This stands out as the sort of weapon that the hard-bitten professional fighting man would prefer, with a blade capable of taking a razor edge with a good strong sharp point. Steel guard and pommel, with a grip wrapped in leather cord, this knife is attractive, but above all –

serviceable. Made by **Windlass Steelcrafts®**. Includes leather scabbard. #401760...\$90 ✈



FREE DVD OFFER

When you purchase any of the Windlass Steelcrafts swords or daggers from our catalog, you will receive our exciting "Forged in the Heat of Battle" DVD absolutely free. This professional 13 minute film shows a brief history of the sword, the step-by-step forging and manufacturing process which goes into the Windlass blades, plus an expert cutting demonstration. A truly entertaining presentation, which will allow you to see firsthand the overall strength and ability that every one of our swords possess. While Supplies Last

Euro-Spearhead

One of the world's most ancient weapons, the spear was a dominant presence on the field of battle for an amazingly long period of time. This particular blade form was put to use through a wide range of European history by a wide range of cultures, from Ancient Celts and Greeks, into the Renaissance. The blade is tempered steel and the socket fits a 1 1/4" round pole (not included). Made by **Windlass Steelcrafts®**. #600766...\$45

Overall-16" • Blade-9 1/2" long, 2" wide, 3/16" thick • Wt.-1 lb. 2 oz.

Use with our Butt Caps on pg. 54

Flitz® & Windlass® Care Kit

Working directly with the pros at Flitz we've come up with what we feel is the ultimate knife, sword and gun cleaning and care kit available. Each of these products is essential for the complete care of any and all of your valued knives, swords, axes, firearms and almost anything else that needs the best care and protection. The set features the famous polishing paste that works miracles on metals, plastic & fiberglass surfaces, specially formulated stainless steel & chrome polish, Speed Wax® protectant that protects like nothing we've seen and **won't dull your surface finish**. Plus you receive a 12" x 12" specially designed, super soft and absorbent micro fiber cloth for easy application. All in one handy kit! Protect your investments with the kit used by museums & collectors the world over. #801920...\$25



Cannot be shipped by air
or to AK or Hawaii.



Leather Brigandine

Even with a gambeson and a mail shirt, a fighter was not as well protected as a warrior with plate armor. The brigandine filled this gap very well. This suede leather garment has small steel plates riveted between the outer shell and the lining. Weighing only 6 lbs., it is very flexible and does not restrict movement. Commonly worn over a gambeson and mail shirt. Our version has three buckles on each side for great versatility in fit. Approx. 32" long. Choose black or brown leather shell. S/M (fits chest size to 38") or L/XL (fits chest size to 48"). #100402...\$170



Knight's Chain

"Chains" or necklaces were given and worn to designate a knight or a lord of high office. Our offering is of solid nickel silver plates joined together with steel rings. Dress up your armor or lordly outfit. Chain is approx. 36" and weighs 1 lb. #200668...\$65



Calf Boot

Attractive leather short boot with three buckle design. Can be folded over to ankle length or left up for a rare mid-calf look. Although not specific to any time period, they easily could have seen use during the Renaissance. Worn by both men and women. Leather sole. Men's whole sizes only 6-13. #200492...\$60



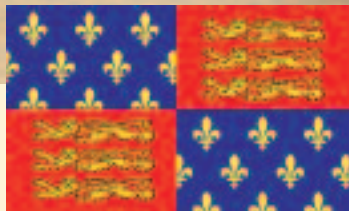
Arming Cap

Worn under a helmet and/or a mail coif, the Arming Cap offered extra cushioning for the head. Although the original cloth caps were widely stuffed with rags or straw, our poly/cotton cap is thickly lined in fiber fill. Machine

washable. Quilted construction with a tie cord. S(21" cir.), M (22"), L(23") and XL (24"). #201002...\$30

KING EDWARD III FLAG

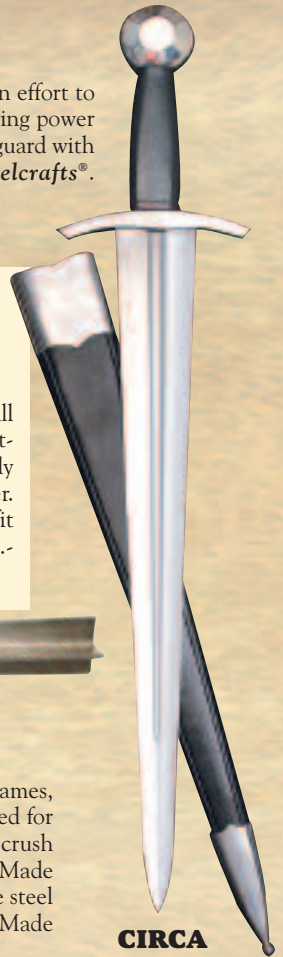
The royal standard of England beginning in the 14th century. Indoor/outdoor nylon. 3' x 5' with metal grommets. Flag is double sided. #801428...\$12



Coustille

Popular with knights as well as the rank and file, the Coustille was developed in an effort to create an all-in-one weapon – convenient to carry like a dagger, but with the cutting power of a short sword. The well-tempered blade is light and very fast. Steel pommel and guard with a wood grip covered in leather. Includes scabbard. Made by **Windlass Steelcrafts®**. #501014...\$135 ✂

Overall-22" • Blade-16³/₄" long, 2" wide, ³/₁₆" thick • Wt.-1 lbs. 6 oz.



Steel Vambraces

These steel lower arm guards will go with a large range of period outfits and weapons. They are nicely formed and lined with leather. Straps on the inner arm adjust to fit just about anyone. 9¹/₄" x 6¹/₄". Wt.-1 lb. 10 oz. #300348...\$80/Pair



Bar Mace

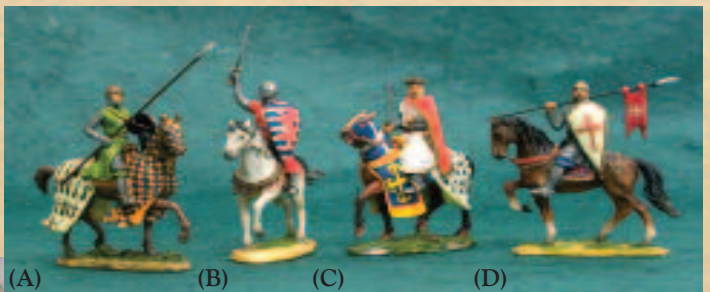
**CIRCA
1300**

The remains of a mace of this type were found in the River Thames, but they were in use all across Europe. Little finesse was needed for this brutal mace, and a warrior strong enough to wield it could crush helmets and break swords with the heavy blows it could deliver. Made from four bars of steel with a wood and leather grip and a large steel pommel to help balance it, this is indeed an awesome weapon. Made by **Windlass Steelcrafts®**. #600652...\$130 (\$5 addl s/h)

Overall-28¹/₂" • Blade-20" x 2" x ³/₁₆" • Wt.-4 lbs. 8 oz.

**CIRCA
1300**

**CALL TOLL-FREE
1-800-883-8838**



Warriors Through the Ages

These resin men of war show incredible detail and attention to historically accurate arms and dress. Each is painstakingly hand painted with several "overcoats" to give them the detail that is normally only seen in high end figures that sell for far more money. Each stands approx. 4" tall. **\$14 each**

- (A) French Knight...#802117
- (B) English Knight...#802115
- (C) Royal Horseman...#802118
- (D) German Crusader...#802119

Gambeson

It was always possible to drive the point of a weapon through the rings of a mail shirt or shear it with a good cut. A thick, padded garment worn under a mail shirt greatly reduced the risk of these types of injuries. Our gambeson is of a type worn from the early middle ages well on through the Renaissance. Choose M, L or XL. Hangs approx. 32" and weighs 1¹/₂ lbs. Black only. Poly cotton. Hand wash. #100278...\$95





(B)



(A)



(C)

Lord of Essex Ensemble

(A) **Shirt**-Period cut shirt made of a crinkled black polyester, with a Tudor styled neck and dual hook & eye closure. S/M or L/XL. #101062...\$70

(B) **Long Vest**-Elegant black Tudor long vest with silver brocade. 100% cotton with rayon lining and hook & eye closures. S/M or L/XL. #101063...\$95

(C) **Short Coat**- a truly stylish short-cut top coat made of 100% cotton and richly decorated with silver lacing and trim. Nicely padded with high collar. #101064...\$85

Ensemble shown with the King Henry slash pants found on page 20 and our knightly chain on page 25.



(D)



(E)

The Tudor's T-Shirts

Inspired by the hit Showtime series, comes this collection of fully emblazoned, high quality shirts with graphics from The Tudors. 100% pre-shrunk cotton. M, L or XL \$20 XXL \$24

(D) Barbican-#101088

(E) Chivalry-#101091

(F) Archivolt-#101089

(G) Dissolution-#101092

See more Tudor T-shirt designs on our website!
museumreplicas.com



(F)



(G)

Velvet Pants

A perfect alternative to wearing tights. Looser fitting, yet still dashing, these comfortable pants are made of a beautiful stretch velvet and are perfect for a large variety of period clothing. Order S/M or L/XL. Black, Soft Green or Gray. #100836...\$43



German Gothic Armor

(A)

Includes FREE
Arming Cap
While Supplies
Last - No Choice

Was seen on
the History
Channel
series
Conquest

(B)

(C)

(G)

(D)

(E)

(F)



(E)

The last half of the 15th Century saw armor reach its apex of beauty, in both form and function. This type of armor would have been a common sight on the battlefields of the War of the Roses. Mail Shirt not included.

(A) Salade With Bevor-Suitable for foot or mounted combat, this two-tiered helmet was prized by both knights and men-at-arms. The Salade (or English Sallet), which possibly originated in France or Burgundy, was constructed with a tail to protect the back of the head and neck. The version we've copied sits flush on a bevor, which protects the chin and throat. The original is believed to be English and dates from about 1480. Features the moveable visor and a bevor with falling buff like the original. Forged of 18 gauge steel, both the Salade and bevor are fully lined and wearable. **#300148...\$235**

(B) Pauldrons-Right and left shoulder protection. Beautifully fluted and with open work. **#300224...\$150**

(C) Rerebrace, Vambrace, Couter-Upper and lower arm sections joined by the elbow coup. Right and left sides are open on the inside to fit a large range of arm sizes. Also, has some lateral adjustment. **#300222...\$150**

(D) Mitten Gauntlets-These beautifully worked gauntlets protect the wrist and complete hand when closed around a weapon. Mitten form fits a large range of hand sizes. **#300226...\$175**

(E) Cuirass With Tassets-This consists of the breast and back plates with their fauld and tassets (upper thigh protection). Handcrafted of 18 gauge steel. Approx. weight-17 lbs. Fits up to 46" chest. Waist 38". **#300100...Reg. \$525...Catalog Special \$450** (\$15 addl. s/h)

(F) Gothic Leg Armor-To finish the armor, fully articulated legs with the same fine details throughout. This type of leg armor ends a little past mid shin and is meant to be worn with heavy leather boots. **#300412...\$365**

(G) Pole Axe-With a long history of use, the pole axe was very popular in the lists, with the winner being decided by the number of blows fairly struck. It was also quite popular for use on the field of battle. With a good sharp point it could be used as a short spear, the back or spike could be used to pierce armor, and the axe head itself was quite lethal. Superb copy, with a high carbon blade and langets to protect the shaft. A magnificent example of a polearm. Made by Windlass Steelcrafts®. **#600640...\$145** (\$5 addl. s/h).

Overall 68" • Head Spike-10" wide • Wt.-4 lbs. 12 oz.

NEW! THIS ARMOR WILL BE AVAILABLE IN LIGHT TOUGH POLYURETHANE FOR IARP - SEE NEW VIDEO AT MUSEUMREPLICAS.COM



(C)



(D)



(F)

Mail Armor

From the Celts of 300 B.C. to 18th century Asia, mail was one of the most prized items a warrior could own. The "Foe of Swords" probably derived the name "mail" from the latin "Macula" meaning net. Made from mild steel similar to the originals; because of the large surface area to volume of each link, this armor was highly susceptible to rust. In fact, most mail was allowed to darken and was then oiled. Express delivery not available on mail.

With history and your needs in mind, we present to you six choices of mail, more than you'll find from any other source. 16 gauge links are combined in the "International" pattern - 4 links through a 5th - common to all European mail. Coifs can be worn with or without a helmet. Outer link diameter of each link is about $\frac{3}{16}$ ", inner link dia. is about $\frac{3}{8}$ ". Mail shirts fit up to a 54" chest. 33" long shirt and sleeves are approx. 18" and hang to just below the elbows on average-height warriors and weigh 23 lbs. Coif weighs 5 lbs. 8 oz. (Except Flattened Steel and Aluminum Mail). Made by *Windlass Steelcrafts*®.

Butted Steel-we recommend keeping this mail oiled when not in use.

(A) Coif-#300188...\$95 • (B) Shirt-#300170...\$250

Catalog Special Butted Mail Shirt (A) & Coif (B)...\$299

Mail Shirts \$6 each addl. s/h • No Express Delivery

ALL HISTORICAL ARMOR IS FAITHFULLY COPIED FROM EXAMPLES IN MUSEUMS & PRIVATE COLLECTIONS.

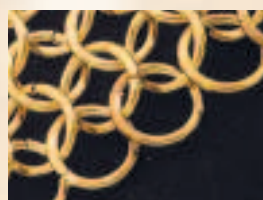


Blackened Steel

Intimidating butted armor, blackened for moisture resistance. Reminiscent of the Black Prince, who purposefully let his mail darken to a blackish hue.

Coif-#300076...\$120

Shirt-#300058...\$310



Plated Brass

Steel rings plated with brass for long lasting good looks.

Coif-#300122...\$110

Shirt-#300102...\$275



Hero's Mail

The smaller and finer worked the rings are, the more protection. Butted, 17 gauge steel rings are only $\frac{3}{16}$ " round providing unsurpassed protection. Incredibly dense, the rings provide the ultimate defense against whatever comes your way.

Coif-one size fits most. Wt.- 5 lbs. 8 oz. #300088 ...\$135

Shirt-as a result of the number of links needed, this is not lightweight. Approx. 31" long. 55" chest. 31½ lbs. #300042...\$325



**WHILE SUPPLIES LAST
FREE PADDED ARMING CAP
WITH ANY COIF (SORRY, NO
CHOICE AVAILABLE.)**



Riveted Aluminum

Perfect for reenactors or stage performers who need authentic looks, but don't need authentic weight! This extremely light mail utilizes aluminum rings, riveted for durability. Even if you wear it all day long you'll hardly notice the weight. Outer diameter of rings is about $\frac{1}{2}$ ".

Coif-weighs only 2 lbs.

#300150...\$180

Shirt-weighs only 7 lbs.

#300138...\$545

Roman Mail

Mail, called "Hamata" by the Romans, was in use before the reign of Caesar until well after Trajan. Shirt is trimmed in leather at the arms and throat and has removable studs for attachments. The butted rings are blackened. One size fits most. Will accommodate up to approx. size 50" chest. Mail only. Shown with our Roman Tunic on pg. 56. #300398...\$265

Manufactured by *Windlass Steelcrafts*®.

As seen in the HBO Production, "Rome."

THE TUDORS

Inspired
by the
Showtime
Original
Series

KING HENRY CEREMONIAL SWORD

This royal sword was designed specifically for the show by Museum Replicas Limited™. The highly detailed parts are gold plated, while the grip is wood covered with leather and twisted wire. Made by **Windlass Steelcrafts®**. Includes scabbard. As seen in Season 3. **#882002...\$260** ✂

Overall-43" • Blade-36" long, 2" wide, 3/16" thick • Wt.-3 lbs. 4 oz.



Used in
Season 3 of
The Tudors



(A)

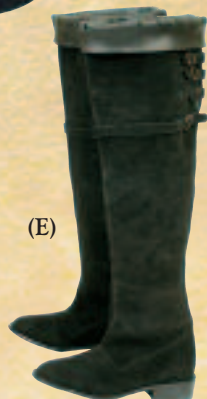


(B)

(C)



(D)



(E)

KING HENRY ENSEMBLE

(A) Red Royal Cape-Tudor style, faux fur trimmed cape. One size. **#882009...\$270**

(B) Doublet-a stunning padded black cotton velvet doublet, accented with antiqued silver trim and jeweled buttons. Dry clean only. Black S, M, L & XL. **#882007...\$160**

(C) Pants-matching black-on-black brocade paneled pants with open slashes. Button-up front. Black S/M or L/XL. **#882008...\$95**

(D) Cross Shirt-a generous period shirt with an embroidered cross pattern on the collar. Hook & eye closure on collar. 100% cotton. Natural S/M or L/XL. **#882006...\$54**

(E) Suede Boots-tall, all suede boot with slashed leather uppers. 25 1/2" tall. Whole men's sizes 9 through 13. **#882010...\$239**

KING HENRY JOUSTING HELMET

A faithful full size reproduction of the Maximillian styled helm used in The Tudors series. The crest and rivets have been plated in polished brass. Moving visor, opening side cheek plates and an attractive Tudors display stand. 18 gauge steel construction. **#882003...Reg. \$345...Catalog Special \$295**



Includes FREE
Arming Cap While
Supplies Last - No
Style Choice



SHOWTIME is a registered trademark of Showtime Networks, Inc., a CBS Company. © 2008 Showtime Networks, Inc. All Rights Reserved.
"The Tudors" © 2008 TM Productions Limited/PA Tudors, Inc.
An Ireland-Canada Co-Production. All Rights Reserved.

KING HENRY COURTLY ENSEMBLE



(A) **Brocade Courtly Cape**-Tudor style, black faux fur trimmed cape. Rich gold, black and burgundy brocade with rayon lining. Dry clean only. One size. #882015...\$195

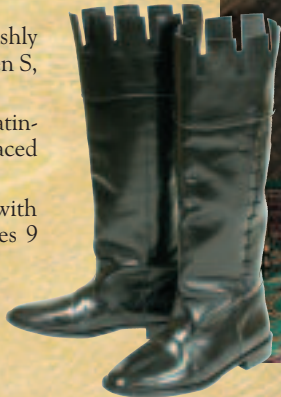


(B) **White Shirt**-bright white period shirt with a black edged Tudor collar. Hook & eye closure on collar. 100% cotton White S/M or L/XL #882012...\$42

(C) **Green Doublet**-a padded courtly doublet lavishly accented with a gold brocade. Dry clean only. Green S, M, L & XL. #882013...\$145

(D) **Pants**-period black knee britches with a royal satin-like finish. Button-up front and lace-up back with laced calves. Rayon. S/M or L/XL. #882014...\$48

(E) **Castle-top Boots**-knee high full leather boot with a castle-top dagged edge. Black Whole men's sizes 9 through 13. 17 1/2" tall. #882016...\$155



QUEEN KATHERINE GOWN

The deep rich blue of this stunning gown is royally accented with gold hand-stitching and over two dozen artificial white pearls. The cuffs of the sleeves are trimmed in a faux fur, while the inner sleeves are made of a delicate sheer blue netting. Dry clean only. S, M, L or XL #882017...\$195



ANNE BOLEYN GOWN

This gorgeous two-piece gown is sure to turn heads with its golden champagne floral fabrics and sleeves lined in a deep burgundy. Artificial pearls and two jeweled brooches accent the front, while the back laces up for comfort. 100% rayon. Dry clean only. S, M, L or XL.

#882019...\$270



Circa
1600



Munich Sword & Dagger

Well-tempered 1095 high carbon steel blades. Pommels and guards are from steel and grips are wood wrapped in twisted steel wire for a very positive hold. Made by **Windlass Steelcrafts®**. Includes scabbard.

Sword-There are several of these swords in different private and public collections, one in the Wallace Collection and several at the Bavarian National Museum. They are perfect examples of a German Military Cut-and-Thrust Swept-Hilt and were carried by the Munich Town Guard. The slightly shorter blade and stout hilt were perfect for breaking up a street fight or tavern brawl, as the town guard was often employed to do, and was clearly intended for practical use. One of the most practical and prolific swords we have ever offered. #501144...\$265 ✂

Overall-43½" • Blade 34" long, 2¼" wide, ⅜" thick • Wt.-3 lbs.

Dagger-During the 1600s a dagger was almost always carried by everyone and was used for two-hand fighting with a sword or for when there was just not room enough for a sword. Fullered blade with pierced work. #402806...\$95 ✂

Overall-19¾"

Blade 13¾" long, 1¼" wide, ⅜" thick

Wt.-1 lb. 4 oz.

Steel Domed Shield

This small round shield remained popular from the 13th to the 17th century. Many soldiers preferred this to the full-size shield to be able to move more quickly. Dia.-23⅜". Wt.-6 lbs. Made by **Windlass Steelcrafts®** of 18 gauge steel with leather grip. Minor assembly required. #800176...\$90

(\$10 addl. s/h per shield)



Fleur-de-Lis Flag

Double sided, indoor/outdoor nylon. 3' x 5' with metal grommets. #801432...\$12



17th Century War Hammer

As long as armor was in use so were weapons designed to overcome it, the war hammer being one of the most effective. This example certainly follows suit with its large head and long deadly curved back spike. Hardwood shaft has tacks for a good grip. Made by **Windlass Steelcrafts®**. #600788...Reg. \$125...Catalog Special \$95



Overall-26" • Head-11" • Wt-2 lbs. 11 oz.



Swiss Flag

Double sided, indoor/outdoor nylon. 3' x 5' with metal grommets. #802253...\$12



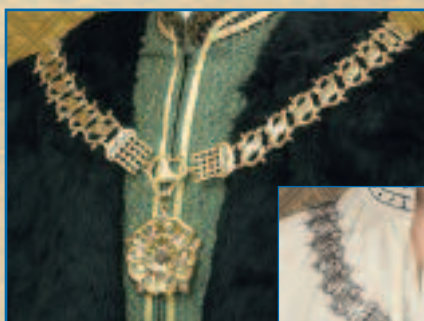
Captain Boot

A sleek boot for pirate or cavalier alike! Soft artificial leather makes this a comfortable boot for any occasion. Fold-over top flap with laces in back. Hidden zipper for easy on-and-off wearing 17" high Order Men's S (8-9), M (10-11) or L (12-13). Whole sizes only. #101038...\$45

Tudor Chains of Office

Also known as a livery collar, these chains were worn to denote attachment to a great person by friends, servants, and political supporters. This reproduction of the Collar of Esses has the Tudor rose hanging from dual portcullis. Fully-sculpted metal links and measures a full 36" circumference with a 3 1/2" rose. \$85 each

Antique silver finish-#200960 • Polished Brass-#200958



Silver-Hilted Dagger

This dagger features a large, fully tempered high carbon steel blade with attractive fuller work married to a durable hilt. Guard, grip, and pommel are all made from solid nickel silver. Along with a black leather scabbard with nickel plated throat and tip. Made of high carbon steel by Windlass Steelcrafts®. #400326...\$120 ✂

CIRCA 1590

Overall-14 3/4" • Wt.-1 lb.
Blade-10" long, 1 1/4" wide, 3/16" thick •

Queen of Scots Gown

The courts of Tudor England are emulated perfectly in this rich gown made of heavy polyester brocade. A shimmering gold polyester is used for the collar, cuffs and separate under skirt. Complete with beaded belt and period lace-up back. To be worn with our farthingale shown on page 31. Blue or Burgundy Order S, M, L or XL. #100996...\$165



Divit Toed Shoes

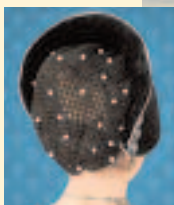
A must for any Renaissance wardrobe or perfect for an evening or special occasion. Embroidered design has beads on beautiful bronze satin material. Leather sole with satin lining. Whole sizes only 6-11. Shades may vary. #100422...\$30



Queen Anne Ensemble

Gown-a full courtly black gown with rich brocade front and sleeves. The slashed half sleeves and borders are accented with a silver trim. Lace-up back. To be worn with our period farthingale on page 49. Cotton velvet & Polyester Dry clean Order S, M, L or XL. #101028...\$190

Hat-this full period hood is richly decorated with silver trim and beadwork. The back has a lattice wool bun, decorated with pearls. Draw string for perfect fit. One size only. #101030...\$60



White Underskirt

This lightweight piece of apparel is a perfect substitute when you want your gown to have a more full appearance but don't want the fullness of a farthingale. Can be used with many of our gowns throughout our catalog. 100% polyester. Order S/M or L/XL #101055...\$42

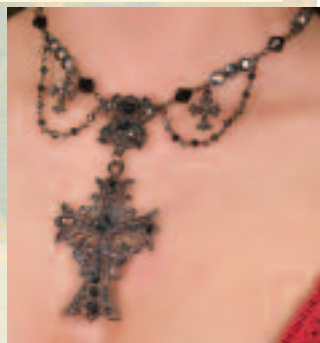


Lady of Leeds Gown

This attractive dress is both light and airy and perfect for year round parties. Made of 100% shimmery blue polyester, with silver cotton velvet sleeves. Rich brocade applique adorns the bodice while elegant lace and trim complete this lovely gown. Dry clean only. Available in sizes S, M, L and XL. #100980...\$195

Black Cross Necklace

One of the most intricate and stunning pieces we have ever offered. This large ornate necklace consists of a large 3" cross and two smaller crosses, all lavishly encrusted with artificial black diamonds and matching earrings. 18" chain. Adj. clasp. #201025...\$55



Black Magic

Very elegant with many period outfits. Dress these up or down; the ornate black beads on black satin still make a lovely statement. Leather soles. Whole sizes 6-11. #100030...\$30



CALL TOLL-FREE 1-800-883-8838



Royal Court Doublet

Manufactured of a heavy brocade fabric and accented by a row of antiqued buttons, every effort has been made to ensure the finest care in the alignment of the fabrics to give this jacket a truly royal appearance. Dry clean only. Order S, M, L or XL #100874...\$120



Cocoa

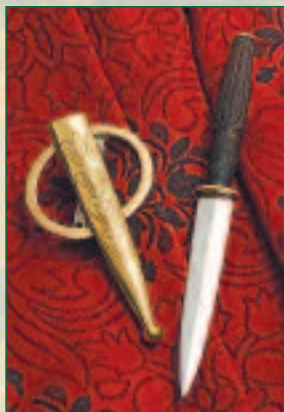
Period Cotton Shirt

This renaissance shirt features a stand up collar and lace up front. The sleeves are wide and roomy and end with an elastic gather. The tucks on the back yoke, sleeve tops and front yoke add to its attractiveness. Choice of **blue** and **cocoa**. 100% cotton. S, M, L or XL. Dry clean only. #100156...\$36 XXL-\$41



Knightly Chain

Worn by knights to show they were part of a society known as the Order of Chivalry. This exquisite chain is made of fully-sculpted links and measures a full 36" in circumference. Antique satin brass finish. #200956...\$60



Hair Dagger

This unique dagger is fitted to an oval barrette to allow you to stylishly carry a knife at the back or side of your head! The barrette and scabbard are gold plated as are the exposed parts of the dagger. The grip is hardwood, carved much like a Scottish Dirk on this pretty little piece. Made by Windlass Steelcrafts®. #801298...\$65

Overall-7½" • Blade-4" long, ⅝" wide, ⅜" thick • Wt.-4 oz.

Swordsmen's Shirt

Made from 100% cotton and easy to care for. **Black, white** or **purple**. Colors may vary slightly. Please specify M, L or XL. Poly cotton, hand wash. #100236...\$39 XXL-\$44

Bruce Brookhart

As head of Development and Design, Bruce Brookhart's accurate edged weapons replicas and imaginative designs have appeared in our catalog for over 18 years. Not only has Bruce visited and photographed many of the major arms collections, both in the USA and Europe, he has had the good fortune to work closely over the years with Mr. E. Oakeshott and Mr. H. Reinhardt.



The Musketeers

(A)

**CIRCA
1590**



(A) Rapier-The basket of this rapier's hilt is ambidextrous and a very effective mix of both the cup-hilt and swept-hilt styles. The grip is wood wrapped with twisted wire and the parts of the hilt are plated with gleaming nickel silver. **#500784...\$265** ✂

Overall-46" • Blade-37½" long, 1" wide • Wt-2 lbs. 8 oz.

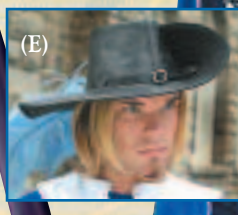
(B) Main Gauche-Carried at the back for a left hand draw, the main gauche was often brought into play with the rapier for a two-handed fighting style. The blade has cut-outs and notches to slow or disrupt an opponent's blade, while the hand was well-protected by the knuckle bow. **#401348...\$135** ✂

Overall-23" • Blade-17" long, 1½" wide • Wt-1 lbs. 12 oz.

(B)



(D)



(E)

(C) Tabard-A rich blue cotton velvet lined with satin. The front and sides are emblazoned with the fully hand embroidered silver cross and fleur-de-lis of the Musketeers, while the edges are finished with a matching silver trim. Dry clean only. One size fits most. **#100516...\$110 XXL-\$115**

(D) Shirt-The perfect companion piece for the Musketeer ensemble. The lace collar and sleeves are designed to accent the above Tabard, while still allowing you to combine it with a variety of additional outfits. Made of white cotton, this shirt will give you years of practical use. S/M or L/XL. **#100512...\$39 XXL-\$44**

(E) Leather Cavalier Hat-Made of fine black leather, the hat has a stylish band with buckle along with the famous up-turned side brim. (Plume not included). Black only. M or L. Please specify **right** or **left** side raised brim. **#200552...\$85**

(F) Musketeer Boots-The classic knee high version of the fold over boot made famous during the 17th century by the King of France's Musketeers. Slip-on, single buckle adjustment across the front. Black suede. Hard leather sole with 1" wood/rubber heel. Sizes 8-13. **#100182...\$175**

(C)



(F)

Deschaux Rapier

With its graceful, artistic lines, the rapier has always been a romantic symbol of the Renaissance. Many hilt forms were tried early on like this three ringed swept hilt. The grip is bone with a wire wrapping, making for a very secure grip. This is a light, fast, and deadly sword with a classical design. Made by **Windlass Steelcrafts®**. Includes scabbard. #500862...\$265

Overall 46" • Blade 39" long, 3/4" wide, 3/16" thick • Wt.-2½ lbs.



**CIRCA
1590**



Overall-12¼" Blade-8" long,
1" wide., 3/16" thick Wt.-1 lb



**CIRCA
1590**

Left Hand Dagger

The left hand dagger (or "Ring Hilt" Dagger) was employed in the art of rapier and dagger swordplay. It was often worn at the back tilting to the left for easy access. This offering matches nicely with our three ringed rapier. The parts are steel and the grip is bone wrapped in wire for a good grasp. Made by **Windlass Steelcrafts®**. Includes scabbard. #402528...\$125



Early Renaissance Shirt

This simple, attractive shirt is suitable for a wide variety of period outfits and looks especially flattering when worn under a vest or jerkin. The billowy sleeves and open neck provide dashing comfort and generous freedom of movement for swordplay, or of course, less threatening kinds of play. Available in men's sizes S, M, L or XL. White only. Poly cotton, hand wash. #100196...\$42
XXL-\$47



**CIRCA
1400-1700**

All Steel Stiletto

Light, easy to carry and often worn like jewelry by both men and women. Stilettoes were used throughout the European Renaissance, and were commonly known as the "tool of the assassin". The triangular shaped blade is deeply fullered on all three sides and comes to a very keen point. The grip and pommel are turned in steel as is the typical short guard. Black leather scabbard with steel parts included. Made by **Windlass Steelcrafts®**. #401620...\$95

Overall-13¾" • Blade 8¾" long x ½" wide • Wt.-12 oz.

**CALL
TOLL-FREE
1-800-883-8838**

**Circa
1510**



Italian Falchion

The falchion was considered a heavy, single edged weapon designed for heavy chopping. During the Renaissance, its form became a little more elaborate, but its functionality remained the same. This was a heavy battle sword designed to oppose the combinations of plate and mail armor. We have copied a sword in the Florence Museum dating from about the first quarter of the 16th century. The blade is high carbon steel. The guard and the pommel are steel, while the grip is polished hardwood. Scabbard mounts are also steel. A beautiful and impressive sword. Made by *Windlass Steelcrafts*®. #500882...Reg. \$210...Catalog Special \$195 ✂

Overall-33" • Blade 26" long, 1 1/4" wide, 3/16" thick • Wt.-3 1/4 lbs.



**CIRCA
1200-1600**

Hunting Trousse

In the Middle Ages most of the nobility were devoted hunters. This large knife was used to dispatch the wounded animal, then dress out and carve the carcass. Sometimes the trousse was accompanied by a fork and a small knife for camp dining. Our trousse has a 12" long, 2" wide blade that will take and keep a razor edge. Both it and the small knife are made of high carbon steel, as is the fork. Furniture is steel, while the grip is polished buffalo horn. Made by *Windlass Steelcrafts*®. #401720...\$160 ✂
(Sharpening done on main blade only.)

Overall 17" • Blade 12" long, 2" wide, 3/16" thick • Wt.-1 lb. 8 oz.



Feasting Dagger

**Circa
1100-
1500**

This handy dagger is just right for eating. Knives and hands were used at table in equal proportions for most of Medieval history. This basic dagger type was equally used by commoner and noble alike. It also makes for a perfect every day carry, all around dagger with brass parts and polished hardwood grip. Made by *Windlass Steelcrafts*®. Includes scabbard. #402630...\$65 ✂

Overall-14" • Blade-8" long, 7/8" wide, 1/8" thick • Wt.-10 oz.



Cavalier Boot

A soft, stylish all purpose period boot made of genuine leather. Large fold-over cuff can be worn up or down. All rubber non-slip soles and heel. Men S(8-9) M(10-11) or L(12-13). #101087 ...\$130

**CALL TOLL-FREE
1-800-883-8838**



Pilsen™ Rapier

We found this rare rapier in an old catalog of antique weapons, which had described it as German, and felt we should reproduce it as a new offering. The hilt shows design aspects of some larger swords, but the knot shaped basket is very unusual and we hadn't seen its like before. The sword is light and quick and balances in the hand nicely. The parts are steel and the grip is textured leather over wood. The blade is high carbon steel and tempered to a good spring. The scabbard has a highly decorative throat and tip. Made by **Windlass Steelcrafts®**. #501175...\$285

Overall 44¼" • Blade 36" long, 1" wide, ⅜" thick • Wt.-2 lb. 4 oz.



Saint Michael Statue

Saint Michael, together with St. George, became the patrons of chivalry during the Middle Ages. This gorgeous sculpture is based on Guido Reni's painting "Archangel Michael" housed in the Capuchin church of Santa Maria della Concezione, Rome. Standing an impressive 14½" tall, this cold cast resin statue depicts Michael trampling Satan and has been metalized, giving it the look and feel of actual antiqued bronze. #801572...\$40



CALL TOLL-FREE
1-800-883-8838



Cavalier Shirt

A rich black cotton velvet shirt with lace-up neck. The slashed sleeve reveals either a silver or gold satin inner sleeve. Order Black/Silver or Black/Gold S/M or L/XL. #101058...\$70

War Hammer

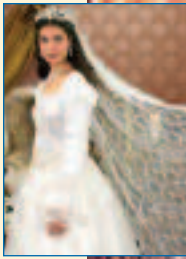
By the mid 1400's armor had developed to the point that it was almost impervious to a sword blow. That's when the knight or man-at-arms would reach for a good solid war hammer. With a few sound blows armor could be damaged and crushed, sorely affecting movement and the ability to defend one's self. This hammer has a large end spike as well as small spikes on the sides. The back spike is thick and able to punch through armor. The head is attached with steel langets to the hardwood shaft which is also studded for a secure grip. #600756...\$125

Circa 1400 • Overall-26½" • Head-1¼" x 5" • Wt.-2 lbs. 4 oz.



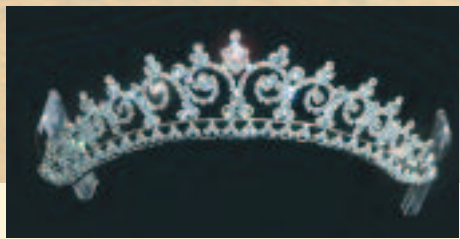
Renaissance Wedding Gown & Veil

This is one of the most magnificent dresses we have ever offered. Perfect for your story-book or period wedding, this stunning white gown is layered in polyester satin and decorated with hand made flowers and white artificial pearls. Gorgeous floral lace finishes off this period dress, along with a 60" matching veil. A white and gold beaded belt is also included. This dress is designed to be worn with our period farthingale (see pg. 31) for maximum beauty. Period lace-up back. Tiara crown sold separately. Dry clean only. White, available in sizes S, M, L and XL. **#101046...\$195**



Canterbury Gown

No matter what the season, the rich green and gold leafy pattern of this full courtly dress will make people think spring is in the air! The bold Renaissance cut is complimented by the puffed shoulders, while the sleeves give the illusion that the dress is being worn with a full chemise underneath. Actually, a perfect lightweight gown for those warm faires! 100% polyester. Dry clean only. S, M, L, or XL. **#100982...\$124**



Princess Tiara

With over 100 stunning artificial diamonds, this beautiful tiara is certain to complete any royal ensemble. Complete with side combs for a secure fit. Choose silver or gold. **#200950...\$39**



Pleasant Peasant

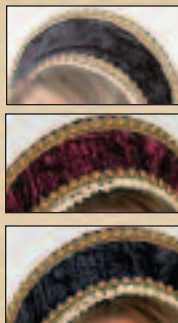
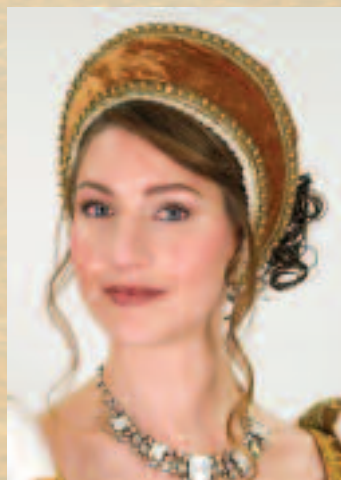
This dress was worn extensively by both the peasant and free class women during the 12th and 13th centuries. It's made from a poly/cotton blend. Although the cut is straight down to the waist, it flares at the bottom. Includes a girdle of the same fabric that is tightened with black cording to provide emphasis to the waist (no lace). Choose **berry** or **meadow green**. Colors may vary slightly. S(6-8), M(10-12), L(14-16) or XL(18-20). Hand wash or dry clean only. **#100056...\$59**

Anjou Gown

The romance of the early Renaissance is captured in this full courtly gown. Rich brocades, lavish trims, period rounded shoulders and an elegant lace-up back all add to the overall beauty of this piece. To be worn with our period farthingale (below) . 100% cotton. Dry clean only. Gold. S, M, L & XL. #100998...\$295

Farthingale

The predecessor to the petticoat, this hooped undergarment will accentuate the overall shape of your renaissance gown. The light-weight, 100% cotton fabric contains 5 metal rings, which will keep your overskirt in a beautiful umbrella shape. Rings are removable for washing. Adjustable inner band with a plastic quick-detach buckle. White. S/M or L/XL. #100994...\$70



Tudor French Hood

The finishing touch for many of our period gowns. This simple, yet elegant hat has been designed to match many of our dresses seen throughout our catalog or can be used with any of our existing outfits. Stiff interior with cotton velvet exterior. White Tudor edging with gold trim and ties complete this accurate accessory. One size. Order gold, dark blue, burgundy or black. #101024...\$30 each

Crimson Cross Necklace

This stunning cross measures a full 2 1/2" by 1 1/2" and is inlaid with blood red glass with 11 simulated jewels. Adjustable clasp necklace is 22" and is a combination of antiqued silver colored chain, metal decorations and simulated stones. #200684...\$24



Fleur-de-Lis Dress

The back of this dress laces up and has a hidden modesty panel, which leaves breathing room after a little too much feasting. We have chosen the Celtic Chemise for this dress (see pg 46), however, this dress would still look wonderful paired with any of our chemises. **Burgundy** or **midnight blue** with gold accents. S/M or L/XL. 100% poly cotton. Dry clean. #100390...\$59 XXL-\$64



Fair Maiden Dress



This colorful 16th century styled dress features coordinating front trim and reenforced boning in the front bodice for extra strong tight lacing. We have paired this piece with the Celtic Chemise (sold separately), however it will look lovely with any of our other chemises. Three colors to choose from: **blue, green and red.** 100% cotton. Sizes S/M or L/XL. Dry clean only. **#100510...\$65 XXL-\$69**



Celtic Chemise

The chemise was worn under all medieval ladies' clothing. It was often slept in as well. Our well-made chemise has very long sleeves and ties at the shoulders. A very special look for your favorite gown. S/M or L/XL. Hand wash. **#100508...\$49 XXL-\$54**



Swordswoman's Shirt

Loose, flowing sleeves allow for excellent freedom of movement, while the long, tapered cuffs are proportioned for a woman's wrist. The shirt is long enough to be tucked in or worn belted. The cuffs are laced to assure a close fit. Made of a poly/cotton blend. Choice of **white or black.** Available in S(8-12) and M(14-18). Hand wash. **#100432...\$39 XXL-\$44**



Celtic Cross

Hand made from .999 fine silver (*that's pure silver*) with a hammered finish. No two alike. Includes the traditional, mystical circle around the center of the cross. Worn by Celts from 500 A.D. on, as indicated by drawings and manuscript illuminations, personal jewelry unearthed by archaeologists, and stone monuments still standing. 1 7/8" x 7/8". Comes with 18" long, silver box chain necklace. **#200482...\$42**

Snow Queen

Deep in the enchanted forest lives the Snow Queen, ruling over her sparkling domain. She is warmed by her majestic long flowing white faux fur cape. This cape and its hood have a full white satin lining. A silver toned leaf clasp provides a beautiful accent. This one is simply beautiful. The Snow Queen Cape is suitable to most periods and would look lovely to wear to holiday parties. Caution: Ladies, beware! If you wear this, you will be the talk of the event and people will stare. One size fits most. Dry clean. **#100524...\$240**

Berengaria Gown

Just like the medieval princess from which this dress draws its name, you will feel like you are at the royal court wearing this lovely gown. Made of a rich burgundy cotton velvet, this full gown's sleeves and front are dressed with rich gold material. Both the sleeves and waistline are accented with a trim of hand-sewn beadwork, making this one of the most beautiful period gowns we have ever offered. Dry clean only. Order S, M, L or XL #100904...\$129



CIRCA
1500

Bodice - Boot Dagger

This pretty little dagger is just right for m'lady's bodice or the top of a boot. Brass parts are gold plated while the grip is polished camel bone. This handy little piece will take a razor edge. Scabbard with gold plated throat and tip included. Made by *Windlass Steelcrafts*®. #401792...\$85 ✂

Overall 9½"
Blade 5¼" x ⅝" x ⅜"
Wt.-3 oz.



Celtic Locket

Perfect for discreetly carrying a keepsake from your love. This gorgeous, **sterling silver** locket has pierced Celtic knotwork front and back. Opens up to conceal your small treasure. **Purple** stone in center. Includes 18" sterling silver chain. 1¼" tall, ⅞" wide, ½" deep. #200194...\$40



Chemise

Our new delicate lace trimmed chemise in white is a very feminine undergarment that's light and airy. The sleeve edges and neckline have a small white lace trim. The bottom of the chemise is adorned with a white flower trim that adds to the charm. This can be worn under many of our gowns or surcoats. Hand wash cold. S/M or L/XL. #100302...\$45 XXL...\$50



Locket Open



Scarlet Dream

This elegant gown is made of a heavy **red** cotton velvet, the dress has full bell sleeves and a generous full skirt. Matching handmade frogs compliment the lace-up front. Back laces also. Sizes **S, M, L** or **XL**. Dry clean only. #100608...\$90 **XXL...\$95**

Leather Gauntlets

The long-cuff construction of these supple, leather gauntlets has been seen throughout the ages. Approx. 15" long. Wt. 8 oz. The palm, hand and fingers are made of soft, pliable leather. So supple they give you the kind of flexibility you expect from driving gloves. Dress black. Please specify S, M, L or XL. #200376...\$42/pair XXL-\$47/pair



Baldric also available in brown.

Renaissance Ensemble

(A) Late Renaissance Shirt-A favorite loose fitting design allowed freedom of movement. Sleeves tie at the cuff. Four eye-lets on sides of the V-neck, tie closes with a leather thong. Cotton blend. **Spice Brown** (shown), **black**, or **white**. S, M, L or XL. Hand wash or dry clean only. #100342...\$39 XXL-white. \$44

(B) European Baldric-While much of the weight of the sword rested on the hip, the shoulder strap provided extra support from the opposite side of the body. This added balance and comfort. Can be worn with any sword. Fits any period. Frog is left open so you can stitch it closed to fit the sword of your choice. Oil tanned leather. **\$59 Each**

Brown With Brass Buckle...

Right-handed-#200326 • Left-handed-#200380

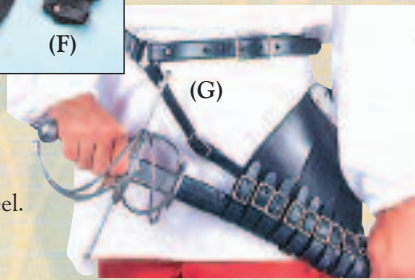
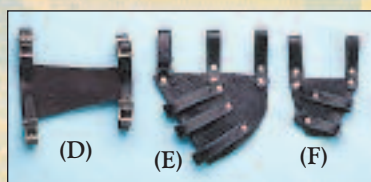
Black With Silver Buckle...

Right-handed-#200292 • Left-handed-#200424

(C) Black Knee Breeches-Are perfect for most Renaissance outfits - all the way through the 17th century. The legs lace on your calves just below the knee. The waist has a tie strap. Made of a cotton blend. Hand wash or dry clean. One size fits most. Poly cotton, hand wash. #100268...\$42 XXL-\$47

Note: For set orders, order each piece separately.

Shirt & Knee Breeches SET-\$75 XXL-\$79



Streamlined Rapier Carrier & Frogs

(Hand crafted from the finest quality leather. Black w/nickel plated steel.

(D) Dagger Back Hanger-#200068...\$22

(E) Sword Hanger-#200012...\$15

(F) Dagger Hanger-#200044...\$12

(G) The rapier scabbard fits through leather loops in the carrier at the best angle for quick access. Two-piece design means that no matter who wears the belt, the carrier still hangs at the proper angle. Wt.-1 lb. **\$80 Each**

Left hand...#200014 • Right hand...#200456

Men's Pants

Long pants for men that are designed with a drawstring waist (28"-50") just like in the olden days. These pants will go with most periods. 100% cotton. Wear them loose, wrap the legs with cord or stuff them in your boots for your favorite look. One size fits most. Choose **black** or **brown**. #100274...\$39 XXL-\$44



CALL TOLL-FREE 1-800-883-8838



Highwayman Coat

This full-length coat is made of durable black denim and is designed with a generous split in the back, as well as the sides, for easy movement. A stylish wide period cuff with braid and buttons adorn the sleeves, while the laced double collar can be worn either up for disguise or down for city traveling. Black only. S/M or L/XL. Dry clean only. #100530...\$99 XXL-\$104

Tricorn Hat-Top grain leather with a dark brown finish. S/M (8") or L/XL (10"). #200550...\$75

Gothic Ensemble

Coat-This beautiful coat and vest brings back images of vampires and monster hunters who supposedly walked the darkened cities of eastern Europe. The long coat has broad shoulders and is meant to be worn open. The coat has been accented with gold and black trim, while twelve hand-made frogs adorn the front. 100% rayon. Dry clean only. Order S/M or L/XL #100940...\$95

Noble's Shirt-S, M, L or XL. Choose purple, black or white. Cotton blend fabric. See pg 4 for full description. #100396...\$60 XXL-\$65



ric. See pg 4 for full description. #100396...\$60 XXL-\$65

Vest-A rich black cotton velvet makes up the body, which has been decorated in a Napoleonic style with gold and black trims. 18 antique brass buttons with an adjustable back strap. Dry clean only. Order S/M or L/XL. #100942...\$79

Velvet Pants-Comfortable fitting pair of stretch cotton velvet tights, which have an elastic waist. S/M or L/XL. Choose black, soft green or grey. #100836...\$43



(A)

Belts for Rapiers & Swords

Made of heavy leather for years of wear. Fits size large (40" long); you can cut for smaller sizes. Black only; steel hardware. Will accommodate scabbards 1 1/4"-2" wide.

(A) Split Strap-For the swordsman inclined toward understatement. #200358...\$58

(B) Three Forked-Trimmed with metal for a bit of dash. Three large adjustable straps allow for a variety of sword widths. #200308...\$66

(C) Double Strap-Straps can be independently moved along scabbard to angle sword to suit you best. Chicago screws allow loops to be adjusted to fit rapiers and broadsword scabbards. #200258...\$54



(B)



(C)

Clothing Guarantee

Museum Replicas fully warrants all of our clothing articles against any defects in materials or workmanship. Please inspect your garment upon arrival for fit and quality. If it does not meet your expectations, we will happily refund your money or exchange merchandise within 30 days of the ship date. We recommend dry cleaning only for years of service on our garments. Museum Replicas Limited will not give a refund or exchange an article of clothing that has been worn, soiled, washed or damaged during use.

The Pirate's Domain

SPANISH BILBO

Beyond doubt this type of sword provided the most effective hand protection ever devised, and was used with cut and thrust blades as well as swords with heavier cutting blades. It was, however, this style that saw much service on both sides of the law across the "Spanish Main". The steel basket and pommel frame a wood and twisted wire grip that is hammered into grooves and provides a very firm hold, while the sword is still light, capable of both fast point work and quick draw cuts. Leather and steel scabbard included. Made by **Windlass Steelcrafts®**. #501210...\$260 ✂

Overall-41½" • Blade-33¼" long, 1½" wide, ⅜" thick • Wt.-2 lbs. 12 oz.



Circa
1650



GENTLEMAN'S LONG VEST

A great piece of apparel for wear under your pirate coat or alone. The dashing metallic brocade patterns of this rich vest are accented with antiqued buttons and an adjustable belt in the back. S, M, L or XL. Choose either gold or silver. 100% rayon, dry clean only. #100884 ...\$95 XXL-\$99

Gentleman's Long Vest shown with our Noble's Shirt found on pg. 40



(B)

(A)

BUCCANEER COAT

(A) This heavy gray woolen coat is one of the best we have ever produced. The long period cut, the large bell cuffs and the richly antiqued buttons all add up to make this coat one stunning piece of pirate garb. Choose grey or navy blue w/black rayon lining. Dry clean only. Sizes S, M, L or XL. #100780...\$125 XXL-\$140

(B) Skull & Crossbones Leather Hat-This stylish variation of the standard pirate tricorne hat is fine black leather and has an antiqued brass skull and crossbones emblazoned on the front. Sizes S/M or L/XL. #200664...\$78

(A)



(C)

(E)

(B)



FIRST MATE'S OUTFIT

(A) Vest-Climb aboard for any adventure with this 17th century lace-up vest. Can be worn with a variety of period shirts and has even been worn by a few shipboard ladies. **Red, green or navy.** 100% cotton. Choose S/M or L/XL. **#100520...\$45 XXL-\$50**

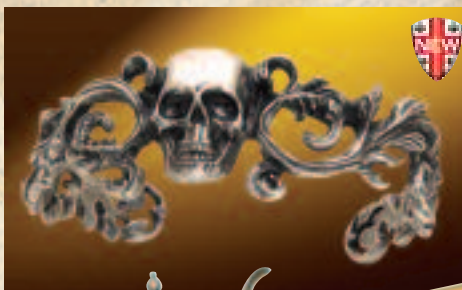
(B) Jacket-Even the crew can look dashing in this heavy wool bolero cut coat. With three-quarter sleeves, wide cuffs and large antiqued metal buttons, this jacket is perfect for any port of call. 100% wool with rayon lining. dry clean only. Brown only. S/M or L/XL. **#100878...\$70 XXL-\$75**

(C) Pants-This long pair of durable 100% cotton pants are perfect for a variety of outfits. With its draw string waist, generous cut and slightly flared legs, and extra deep pockets, these trousers are comfortable when worn loose or inside a boot. **Grey w/black stripes, black w/white stripes, or solid black.** Hand wash. S/M or L/XL. **#100518...\$34 XXL-\$39**

(D) Capt. Jack Tricorn Hat Inspired by the swashbuckling antics of Capt. Jack, it's for those who still live by the Pirate Code. Top grain leather with a dark brown finish. Choose S/M(8") or L/XL(10"). **#200550...\$75**

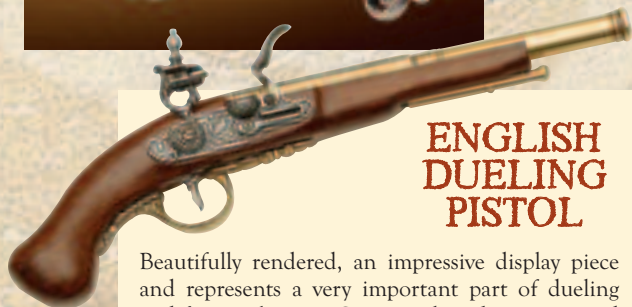
(E) Musketeer Boots Slip-on, single buckle adjustment across the front. Black suede. Hard leather sole with 1" wood/rubber heel. Sizes 8-13. **#100182...\$175**

(D)



DEAD MAN'S CUFF

A magnificent pirate bracelet made of fine pewter. The ornate filigree design is centered with a foreboding skull. Hand made in England. Measures 7" around. **#201031...\$50**



ENGLISH DUELING PISTOL

Beautifully rendered, an impressive display piece and represents a very important part of dueling and firearm history. Cast metal working parts and wood stocks. Non-firing. **#801226...\$42**

Order 2 and Save - 2 for \$75



PIRATE FLAG

The classic standard of pirate Jack Rackham. Indoor/ outdoor nylon. 3' x 5' with metal grommets. Flag is double sided. **#801436...\$12**

CHRISTMAS GIFT IDEAS



**SAVE
\$26**

HIGH SEAS PIRATES CUTLASS

This design was perfectly sized and was capable of strong strokes with its wide blade. Military style grip is solid brass for ease of care and toughness. Comes with scabbard. #501082...Reg. \$135...**Closeout \$109** ✂

Overall 33½"
Blade 28½" long, 2" wide
Wt.-2 lbs. 6 oz.



**SAVE
\$100**

CADSAND SWORD

The sweeping parts are brass and the grip is solid hardwood on an effective medieval cut-and-thrust type blade from well-tempered high carbon steel. Made by Windlass Steelcrafts®. Includes scabbard. Circa 1337. #501126...Reg. \$245...**Closeout \$145** ✂

Overall-40¼"
Blade-33¾" long, 1½" wide
Wt-2 lbs. 12 oz.



**SAVE
\$106**

EFFIGY SWORD

The parts are gleaming brass, the grip is wood with leather cord and the sharply tapered blade is from fully tempered high carbon steel on this well-balanced, one-hand thrusting sword. Scabbard included. #501100...Reg. \$265...**Closeout \$159** ✂

Overall-38¼"
Blade-32" long, 1½" wide
Wt-2 lbs. 6 oz.

CALL TOLL-FREE 800-883-8838



**SAVE
\$26**

GYPSY PRINCESS

This lavish ensemble is sure to get you noticed at any event. The main ensemble consists of our full Gypsy skirt, a matching pair of pants and a short open vest. Both the skirt & pants have elastic waists for easy fit. Polyester. S/M or L/XL. #100890...Reg. \$125...**Closeout \$99**

Blouse not available.



**SAVE
\$31**

BLACK ORCHID JACKET

Made of a brocade black-on-black fabric, with lace-up sleeves and a sewn on leather corset on the outside. Dry clean. S, L or XL. #100738...Reg. \$130...**Closeout \$99**



**SAVE
\$26**

GOthic NET DRESS

This rayon gown is covered in a rich black lace and is accented down the front with a burgundy brocade. A cotton velvet bust line, lacing up the front and tattered sequined sleeves. Laces up the back. S, M L or XL. Dry clean. #100566...Reg. \$95...**Closeout \$69**

CHRISTMAS GIFT IDEAS



**SAVE
\$79**

NOBLE'S SWORD

Highly sculpted solid brass parts with an antiqued finish. High carbon steel blade. Cast grip covered in fine black leather. A beautiful and functional sword. #500980...Reg. \$199...**Closeout \$120** ✈

Overall-36"
Blade-30" long, 1½" wide
Wt-2 lbs. 6 oz.



**SAVE
\$86**

PIRATE CUTLASS

This was an exceedingly popular short weapon. Steel basket protected the hand. High carbon steel blade. Steel pommel and leather covered wood handle. Includes leather scabbard. #500160...Reg. \$235...**Closeout \$149** ✈

Overall-28½"
Blade-22½" long, 2" wide
Wt-2 lbs. 19 oz.



**SAVE
\$76**

SWORD OF CASSEL

Long, elegant steel guard provides excellent hand protection. Steel pommel with wood grip covered in twisted wire for a positive hold and is long enough for use with two hands. Scabbard included. #501156...Reg. \$225 ...**Closeout \$149** ✈

Overall-28½"
Blade-39½" long, 1½" wide
Wt-3 lbs.

VISIT OUR WEBSITE: MUSEUMREPLICAS.COM



**SAVE
\$90**

GERMAN HAND- AND-A-HALF

The long pommel affords a two-hand grip, though it can be easily be swung with one hand because of its beautiful balance. High carbon steel. Includes scabbard. #501050...Reg. \$235 ...**Closeout \$145** ✈

Overall-42¼"
Blade-34" long, 1¼" wide
Wt-2 lbs. 7 oz.



**SAVE
\$86**

GRANTHAM RAPIER

Blackened hilt and shell guard with an intricate floral design. Grip is wire over wood. Well-tempered high carbon steel blade. Includes scabbard. #500958...Reg. \$285...**Closeout \$199**

Overall-44" • Wt-2 lbs. 6 oz.
Blade-36" long, 1" wide



**SAVE
\$56**

DARK WARRIOR

The helm offers good coverage with its full cheek pieces and lower extension that terminate in raised teeth. Adjustable liner with chin strap. Made from 18 gauge steel. #300426...Reg. \$195...**Closeout \$139**

SPYGLASS SKULL CANE

Menacing antiqued brass skull hides a secret. Just unscrew the skull, and you can flip up a 5x magnifying telescope. Rich antiqued brass finish and black hardwood cane. 37 1/2" overall. #801714...\$120



THE BLACK PIRATE ENSEMBLE

(A) **Bandana**-Suede-like texture with rough weathered lace. 100% rayon. S/M (up to size 8) or L/XL (up to size 10). #100972...\$34

(B) **Vest**-A rich black cotton velvet makes up the body, which has been decorated in a Napoleonic style with gold and black trims. 18 antique brass buttons with an adjustable back strap. Dry clean only. Order S/M or L/XL. Shown with our Noble's Shirt sold below. #100942...\$79

(C) **Wide Pirate Belt**-This stately belt harkens back to the days of the adventurous high seas. With a large 5 1/4" antiqued brass buckle and a 2 3/4" wide leather belt, this piece looks great when combined with any of our sashes. 56" long. Brown only. #200716...\$48

(D) **Sash**-Rayon sash measures 96" in length and edged with multiple tassels. Order Burgundy or Gold. One size. #100822...\$24

(E) **Velvet Pants**-Comfortable fitting pair of stretch cotton velvet tights, which have an elastic waist. S/M or L/XL. Choose black, soft green or grey. #100836...\$43

(F) **Musketeer Boots**-Slip-on, single buckle adjustment across the front. Black suede. Hard leather sole with 1" wood/rubber heel. 8-13. #100182...\$175



Shirt comes in 3 colors, see below.

(A)

(B)

(C)

(D)

(E)



(F)

(G)



(H)



PIRATE FLAGS

Double sided, indoor/outdoor nylon. 3' x 5' with metal grommets. \$12 each

(G) Stede Bonnet-#801746

(H) Henry Avery-#801750

NOBLE'S SHIRT

Beautiful late renaissance shirt with standing rucked collar front and pearl buttons. Three tiered cascading center front ruffle and sheered long sleeves ending in pearl button ruffled cuff. A must for the well dressed lord. S, M, L or XL. Choose **purple**, **black** or **white**. Cotton blend fabric. Dry clean only. #100396...\$60 XXL-\$65

LETTER OF MARQUE BELT BUCKLE

This intricately designed belt buckle is hand crafted in England and is made of fine English pewter. Measures a full 4" X 2 3/4" and can accept up to a 1 1/2" wide belt (not included). #200876...\$60



PIRATE'S COMPANION

Where would the seafaring rogue be without his trusty cutlass? This stout sword is made to be as rugged as the originals. High carbon steel blade. Gorgeous brass basket and nice hardwood grip. No need to sail the high seas in search of ill-gotten riches; this beauty is a treasure in itself. Made by **Windlass Steelcrafts®**. #500180...\$165 ✈

Overall-32"
Blade-26" long
Wt.-2 lbs.

See pg. 37 for
Tricorn Hat



MARY READ PIRATE ENSEMBLE

(A) Coat-this period open coat is 100% wool, with ultra-suede collars and cuffs. A high collar, antique gold button and rich trim accent this period coat. Order S, M, L or XL. Brown #101016...\$135

(B) Vest-a rich brocade and scoop v-neck collar make this a perfect stand alone garment or accent

to our Mary Read coat. Golden Brown Order S/M or L/XL. 100% rayon #101018...\$42

(C) Belt-a slightly more elegant belt perfect for an pirate ensemble. Leather One size. Brown. #201014...\$36

(D) Shirt-this stunning lady's shirt has a single button high collar, which is accented with lace, as well as the cuffs. 100% cotton White. Order S, M, L or XL #101020...\$39

(E) Pants-black velour stretch pants with leather straps, which buckle around your calves. Dry clean. Order S, M, L or XL #100736...\$48

(F) Ladies Pirate Boots-these tall leather boots are extremely comfortable to wear and have a full rubber sole. 19" tall Black only. Order sizes 6 - 10, whole sizes only. #101042...\$125



NEW WORLD GLOBE

This attractive French globe is perfect for a small desk, sideboard or bookshelf. An aged wood texture with a base of bronze and brass. 10" X 3". #802225...\$55



CROSS OF ENSIGN FLAG

Double sided, indoor/outdoor nylon. 3' x 5' with metal grommets. #802254...\$12

VISIT OUR WEBSITE: MUSEUMREPLICAS.COM

**CIRCA
1690**

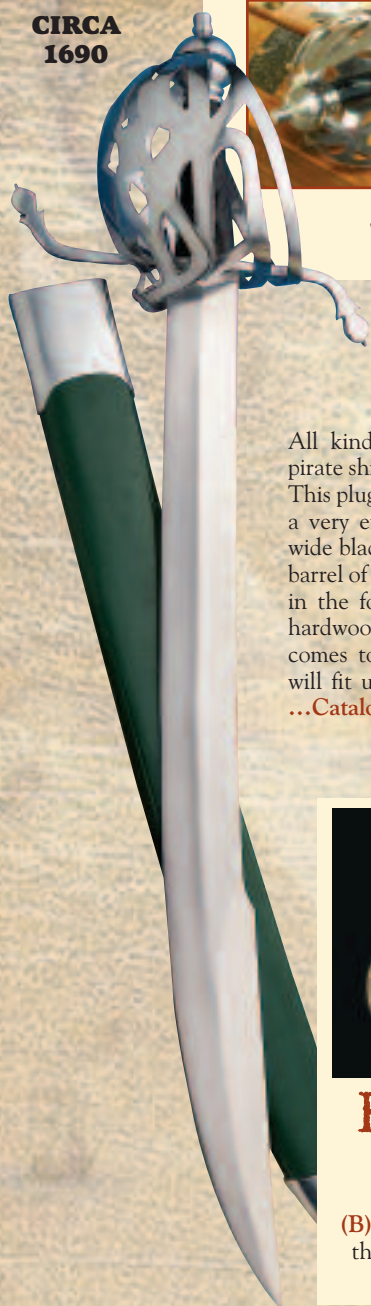


SCOTTISH CUTLASS

Scottish Basket-Hilts were at times married to a cutlass blade (this one has a double edge for the first 9" of the blade). The basket itself provided excellent hand protection and could deliver a hard blow in the crowded melee that ensued onboard. Made by *Windlass*

Steelcrafts®. Includes scabbard. #500920...\$215 ✂ (\$3 addl. s/h)

Overall-31 1/2" • Blade-25" long, 2 1/8" wide, 3/16" thick • Wt.-3 lbs. 4 oz.



PIRATE DAGGER

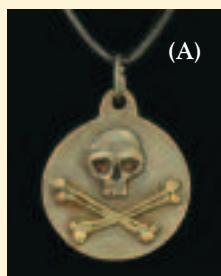
All kinds of weapons found their way onto pirate ships, as long as they were good weapons. This plug bayonet served a double role. It made a very effective fighting dagger with its long, wide blade, but in a pinch could be fit in the barrel of a musket. The antiqued brass parts are in the form of angels and the grip is turned hardwood. The blade has a cut-out cross and comes to a keen point. Includes sheath that will fit up to a 4" belt. #402526...Reg. \$95 ...Catalog Special \$75 ✂

Overall-15 3/8" Wt.-10 oz.

Blade 9" long, 1 1/2" wide, 3/8" thick



**Circa
1500**



(A)



(B)

PIRATE PENDANTS

(A) *Skull & Crossbones*-Antiqued brass.

1 3/8" across. #200888...\$18

(B) *Blackbeard*-Antiqued nickel emblazoned with the seal of Edward Teach, known as Blackbeard.

1 3/8" x 1 3/8". #200890...\$18



WINDLASS KNIFE & FORK FLINTLOCK PISTOL

Expertly hand forged and finished, this unique brass and steel set is made so every detail, from the decorative notched stainless steel blade and the long tapered tines, to the moving parts of each pistol. These unusual (non-firing) utensils are highly decorated with antiqued brass handles, richly adorned with scrolled etched designs. This rare cutlery combo comes complete with a gorgeous faux tortoise shell presentation box, lined in both brown velvet and white satin. Copied from an original set in a private collection. Knife-Overall: 9 1/4", Blade: 5". Fork-Overall: 8 3/4", Tines 4". Presentation Box-Overall: 11" x 4 1/2" x 2".

#801768...Reg. \$139...Catalog Special \$95



BLACKBEARD PREMIUM STATUE

This massive figure is a stunning 1:4 scale museum quality piece. Wielding his pistol and sword, Blackbeard stands 20 inches tall atop the display base. Each piece is cast in high-quality polystone, then hand-painted and hand-finished to exacting standards. The figure is dressed in an incredibly detailed fabric costume, complete with leather pouches and real metal elements. This stunning figure is the ultimate representation of the legendary pirate Blackbeard, an outstanding addition to any collection. **#802259...\$399**



LADIES PIRATE SHIRT

Made of poly/cotton blend. V neck opening with tie. Sleeve cuff trimmed with an abundance of lace. Red only. Hand wash. S(8-10), M(12-14), L(16-18) and XL(20). **#100734...\$39**



PIRATE KING BELT BUCKLE

This impressive buckle measures a full 4 1/4" across. The polished fine pewter skull is adorned with a crown and flanked by two copper cherubs. Fits up to a 1" wide belt. Exquisitely hand made in England. **#201032...\$90**



STANDARD OF SPAIN FLAG

The royal standard of Spain is recreated on this double sided, indoor/outdoor nylon. 3' x 5' with metal grommets. **#802252...\$12**

VISIT OUR WEBSITE: MUSEUMREPLICAS.COM

PIRATE CAPTAIN'S HANGER

This beautifully antiqued brass and steel hilt with fully tempered high carbon steel blade is worth its salt against any seabeast or while swarming the side of a galley. Includes scabbard. Made by *Windlass Steelcrafts*®. #500968...\$175 ✂

Overall-32 1/2" • Blade-26" long, 1 1/8" wide, 3/16" thick • Wt.-2 lbs.



CAPTAIN'S COAT

Our Captain's Coat is taken from a northern European military leader's coat of the late 1700's, and is made roomy for comfort. Made of a lush cotton corduroy in your choice of **burgundy, royal blue or hunter green**. Delicate gold and black trim shimmers. Colors may vary slightly. Available in S(42" chest), M(46" chest), L(50" chest) and XL(54" chest). Wear it with comfort and authority. Dry clean only. To complete this outfit, we used our Knee Breeches, which can be found on pg. 12. #100040...\$120



HIGH SEAS BOOTS

Short, period boots perfect for treasure hunting or Ren Faire. Side zippers for easy on and off. Black synthetic leather. Men's sizes S(8-9) M(10-11) or L(12-13). #101036...\$60

FLAGS OF THE CARIBBEAN

These large 3' x 5' nylon indoor/outdoor, double-sided flags are authentic reproductions of the standards of some of the deadliest pirates in history. Grommeted for durability. \$12 Each

(A) Skull With Crown #801748

(B) Edward Teach (Blackbeard) #801440



VENETIAN STILETTO

Stilettoes came in many sizes, from delicate little hideout weapons to forthright long daggers suitable for use even as a main gauche, but this is certainly one of the more attractive ones we've come across. Blade face is beautifully hollowed. Grip is wood. Made by *Windlass Steelcrafts*®. Comes complete with sheath. #400994...\$85

Overall-13 3/4" • Blade-8 3/4" long • Wt.-7 oz.



**Circa
1520**



PORT ROYALE ENSEMBLE

(A) Shirt-this romantic shirt has all of the frills and lace as if transported from a romantic period novel. The soft white polyester has elastic in the waist, cuffs and neckline, allowing it to be worn many different ways. Order S/M or L/XL #101006...\$55

(B) Vest & Armbands-two great pieces perfect for this ensemble or just about any period outfit. Matching polyester brocade with lacing on both, allowing for a perfect fit. Order S, M, L or XL #101008...\$65

(C) Skirt-a fully layered dress made from a gold striped cotton velvet and billowy soft white polyester. Bands of gold trim hold the upper skirt in a fairy tale like fashion. Easy lace-up back allows for a good fit. Order S, M, L or XL #101010...\$120



LADY'S HIGH BOOT

These tall, form-fitting boots are great for almost any outfit. The black synthetic leather is soft and supple, while the black lace inserts gives an heir of elegance. Lace-up fronts with a zippered side. 13½" tall with a 2½" heel. Sizes 6 - 10. Black only. #101073...\$45

LADY JANE DRESS

This elegant gown could easily be seen traversing the royal court of King Henry VIII. The rich burgundy cotton velvet body gives a form-fitted appearance and is exquisitely accented with a hand beaded gold trim. The sleeves have a sheer soft netting and are finished with matching burgundy bows. Dry clean only. Order S, M, L or XL. #100898...\$120





Tavern Frock & Surrey Chemise

These two lightweight garments are perfect for those warmer weather events.

Tavern Frock-is a period cut over-gown with an attached brocade vest, which laces up the front for a form-fitting appearance. Green with black skirt 100% polyester. Order S/M or L/XL **#101000...\$55**

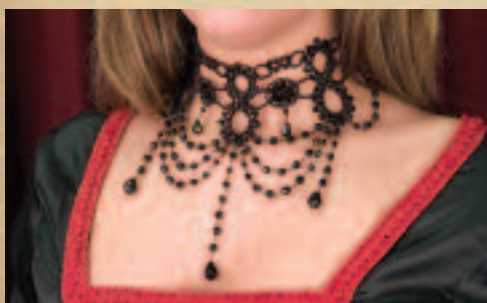
Surrey Chemise-is a more dressy variation of the simple period chemise. Both sleeves have been richly decorated with four bands of laces and trims, allowing you to adjust the sleeve giving it a beautiful pillowed effect. Polyester/Cotton blend White only Order S/M or L/XL. **#101002...\$65**



Camelot Goblet



This fine pewter piece is safe for any banquet and has a stem made of absinthe green glass. Measures an impressive 8" high. Richly hand crafted in England by fine metal smiths. **#802250...\$189**



Black Floral Beaded Choker

This stunning piece of jewelry is certain to make an impression at every event. Made of hundreds of pieces of artificial black stones, this high-necked choker forms beautiful floral-like patterns within its design along with three teardrop strands. 15" in length. **#201027...\$35**



Saint Michael Statue

In a triumphant pose, God's most beloved Archangel that drove his brother Archangel, Satan, out of heaven. Beautifully cast with every attention bestowed to detail. Resin statue with an antiqued bronze finish. Statue stands 12 7/8" tall and is 5 1/2" wide. **#802267...\$55**

Highland Dress

(A)



(A) Designed so that the sleeves, bodice and skirt are made into one – eliminating the need for three garments. Dress features a full skirt matching the plaids in our men's kilt. **Red/green plaid. Black bodice with white lace trim** adds to the lovely look of this dress. Back lacing. S(6-8), M(10-12), L(14-16) or XL(18-20). Dry clean. Cotton poly bodice and blouse and acrylic and wool skirt. **#100352...\$64 XXL\$69**



(C)



(B)

Stirling Gown & Chemise

(B) **Gown**-plaid polyester skirt is complimented with a matching hat and short shoulder cape. A deep green lace-up ultra-suede vest completes the look for this bonnie lass! Antique gold button and buckles. Can be worn with the Stirling Chemise below or any of our other chemises. Order S, M, L or XL. **#101012...\$195**

(C) **Chemise**-lace edged sleeves and wonderfully soft polyester fabric make this a great addition to almost any ensemble. Order S/M or L/XL. **#101014...\$65**

Royal Gold Chemise

(D) As an alternative to our standard white chemise, this beautiful golden chemise will totally enhance and change the look of any dress worn with it. The extra long sleeves pulled up and are tied at the shoulders, so a custom fit is easily acquired. A perfect addition to any period ensemble. 100% rayon. Dry clean only. S/M or L/XL. **#100944...\$79**

(D)



(E)

Apparel For Country Lasses

(E) **Underdress**-100% Muslin with elastic wrist gathers and a drawstring neck which can be worn on or off the shoulder. S, M, L or XL. **#100104...\$49 XXL\$54**

(F) **Country Maid Skirt w/Integral Bodice**-The bodice and attached skirt are made of durable 100% cotton. The bodice is laced to fit with brass grommets, and the full skirt is split down the front. Sizes S, M, L or XL Choose. **Black or emerald green. #100126...\$70 XXL\$74**

(B) & (C) Set-\$107or XXL Set-\$111



(F)

Brass Basket-Hilt Claymore

This Scottish Basket-hilt Claymore is the equal of any raised by clansmen as they overran the English at the Battle of Falkirk on Jan. 17th, 1746. The pierced basket-hilt is a faithful reproduction of one found on the Culloden Moor. The fully tempered high carbon steel blade is of the typical fullered, double-edge, broadsword pattern of the 1500s-1800s. The basket also has a rich red cloth liner and a scabbard is included for this great price. Made by **Windlass Steelcrafts®**. #500922...\$285 ✂

Overall-39½" • Blade-32½" long, 1¼" wide, ⅜" thick • Wt.-3 lbs. 14 oz.



CIRCA 1860



Bonny Scottish Dirk

11¼" long dirk blade showcases crisp etchings of the traditional Scottish foliage and thistle motif on both sides of the blade. 5" long, swaged false edge and a knurled pattern on the blade back mark this dirk with distinction. The black wooden handle is carved in an interweave pattern dotted with ornamental nickel silver tacks. The sheath is wood covered with leather and reinforced with metal throat and tip. Made by **Windlass Steelcrafts®** from hand forged high carbon steel. #400806...\$110 ✂

Overall-17½" • Blade-11½" long, 1½" wide, ⅜" thick • Wt.-1 lbs. 2 oz.

Early Scottish Dirk

A direct descendant of the medieval ballock dagger. The blade was long and single-edged. Made to use alone, with a shield and sword, or just with a basket-hilt claymore. We have replicated an early version of the dirk. The hardwood handle is carved with a chevron like pattern copied from an original of the same time period. For those with a serious interest in the Highlands, this is a must for any collection. Includes scabbard. #400508...\$115 ✂

Overall-21" • Blade-14½" long, 1¼" wide, ⅜" thick • Wt.-1 lb.



Sgian Dubh

A Scottish tradition, the Sgian Dubh is worn in the stocking of the Highlander. Our Sgian Dubh has a black wooden handle that is carved on one side, smooth on the other. Embossed nickel silver fittings feature a thistle motif. Comes with sheath. #400910...\$40 ✂

Overall-6⅞"
Blade-3¼" long, ¾" wide ⅜" thick
Wt.-2 oz.



CIRCA
1550

Full Size Celtic Skull

Many nations decorated their dead with sacred symbols to venerate them or protect them in the afterlife. The living even used them as good luck charms. Antiqued bone finish with Celtic carvings. Crafted in resin for display as a decorator accent or paper weight. 6" tall, 7½" long. #802089...\$24

Call Toll-Free 1-800-883-8838





**Circa
1500**



Primitive Scottish Dirk

This early type of dirk evolved from the Kidney Dagger and was the first step toward the ornate Scottish Dirk we know today. The grip is solid hardwood and the parts are steel. The long high carbon steel blade is flexible and well-tempered. This is a must-have item for the highlander. Made by *Windlass Steelcrafts*®. Includes scabbard. **#402352...\$95** ✈

Overall 19¼" • Blade 14" long, 1½" wide, ⅜" thick • Wt.-1 lb.



(A)

(B)

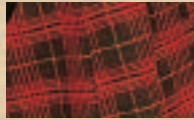
Highlands Shirt & Kilts

(A) This is a great period shirt for many outfits. However, when coupled with one of our kilts, its full sleeves and antique buttoned collar create a perfect combination for any Highland event. Natural only. Order S/M or L/XL. **#100880...\$39** XXL-\$44

(C)



(D)

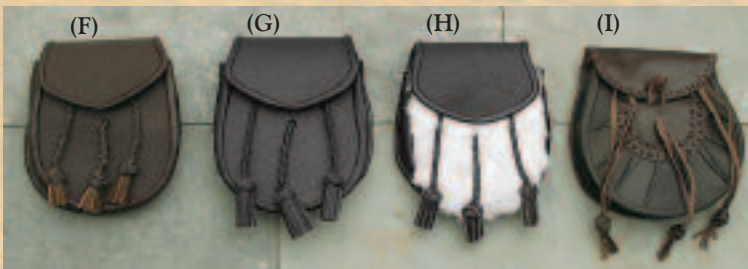


(E)

Colors and designs of the plaids used for kilts conveyed no specific meaning until the 18th Century. Kilts were originally pleated on the floor before being tied around the waist. We've made this attractive kilt easier for you to put on by sewing in the pleats. Four choices, acrylic wool. Choose S(28"-30"), M(32"-34"), L(36"-39") or XL(42"-44"). Dry clean only. **\$38 each** XXL-\$42 each

Choose (B) Brown or (C) Red Plaid...**#100896**

Choose (D) Camel/Navy or (E) Red/Green...**#100092**



(F)

(G)

(H)

(I)



Scottish Sporrans

Part of the Scottish Highlander's dress, the sporrans hung within easy reach from the front of the belt. These fine leather pouches are required dress for Scots, but also make a tough and durable belt pouch suitable for period dress for most time periods. Complete with a high quality leather belt. 6¾" x 7¾" closed. 46" belt. Approx. weight 14 oz. Flap has steel snap.

(F) Brown-**#200312...\$65** • (G) Black-**#200042...\$65**

(H) Black w/Imitation Fur Front-**#200104...\$70**

(I) Brown Tied Tassel-tied thong button flap closure.

7½" x 8" closed. 40½" belt. **#200142...\$75**

Scottish Lion Flag

The royal standard of Robert the Bruce and Scotland. Indoor/outdoor nylon. 3' x 5' with metal grommets. Flag is double sided. **#801446...\$12**



Woolen Viking Tunics & Belts

(A) These are the finest viking tunics we have ever offered. Made from 100% wool, the rich fabric is heavy and accurate to the period. The sleeves, collar and hem are accented

with a thick Nordic design trim. An authentic addition to your Viking wardrobe. Dry clean only. Available in either **Grey** or **Brown**. Choose S/M or L/XL. #100804...\$65 XXL-\$69

(B) Belt-A truly fantastic belt made of a heavy grade brown leather. It measures a full 74" in length. Nickel studs adorn the belt. Brass buckle. One size. #200674...\$48

(C) Medieval Long Belt-This style belt was worn from the Dark Ages through the High Middle Ages. Made of a thick, top grain leather, it is richly adorned with antiqued and polished brass accents, buckles and belt tip. The extra long length makes it not only historically accurate, but wearable by just about any sized man. Brown only. One size: approx. 70". #200672...\$95



Feasting Utensils

For the reenactor on the go. Our set of spoon, knife and fork fits into a tie-fold open belt pouch for a great combo that is easy to take along to the fair, picnic, campout. Comes with leather pouch (not sold separately). #800438...\$50



Viking Coin Paperweight

This is a large replica of a silver penny tribute to Olof, King of Sweden, minted in the 9th century. Measuring 3 1/4" across, this antiqued metal coin is a perfect paperweight for any desk and comes with a miniature stand for displaying, as well. Satin lined display box and full history are included. #802022...\$24

Reindeer Fur

Beautiful, high quality reindeer fur from Finland. Not only was fur worn, but it provided a durable, comfortable ground cover. Note: these deer were hunted by Lapps as their main food source and not killed for industry or sport. They cherish animals and the sustenance they provide. Approx. 5' long x 3' wide. Weighs about 3 lbs. Item being discontinued by vendor, **limited supplies**. #800624...\$149

Swedish Viking Sword

This beautiful and unique sword was unearthed in Sweden and can be seen in "Cultural Atlas Of The Viking World" as well as other publications. Quite famous as an artifact, it displays the unknown swordmaker's skill and imagination. The pommel is almost fanciful while the guard displays one of the classic Viking forms. It has the typical wide fullered slashing blade that the Vikings loved. A great chance to own a copy of a well-known sword. Parts are steel and grip is wood covered in leather. Comes with scabbard. Made by *Windlass Steelcrafts*®. #501054...\$255 ✂

Overall-39½" • Blade-32¾" long, 2½" wide, ⅜" thick • Wt-2 lbs. 6 oz.

**CIRCA
950**



Frankish Axe

The ancient Frankish Warriors would form a rough line an arm's throw from their foe and hurl light spears and these axes before charging in with sword and shield for individual combat. This distinct axe is perfect for throwing with its solid steel head and hardwood shaft. Made by *Windlass Steelcrafts*®. #600770...\$45

Circa 400

Overall-19¼" • Blade-6¼" x 2½" edge • Wt.-2 lbs.



CIRCA 750

The seax, or sax, was universal in Northern Europe. Carried and used by the Saxons, Angles, Vikings and German tribes, its use probably dates before the fall of Rome and continues on into the early Middle Ages. The lobed pommel and guard are brass, and the wood grip is studded with brass tacks, for a very secure and comfortable grip. The blade is etched on both sides, flat ground, and capable of taking and holding a razor sharp edge. Leather sheath riveted and laced like the originals, has two thong slots. Made by *Windlass Steelcrafts*®. #401022...\$125 ✂

Overall-19" • Blade-13" long, 1⅝" wide, ⅜" thick • Wt.-1 lb.

The remnants of this Seax can be seen in the British Museum.

Viking Tunic

During the Viking, Norman and Saxon periods, men of all classes wore tunics. The front was open a few inches and adorned with trim as well as the hem and sleeves. One size. (Belt not included). **Green** or **brown**. 100% cotton. Dry clean only. #100018...\$45 XXL-\$49

Viking Shield

This finished shield has been prestained a **dark brown** and has a steel boss, decorative strips and rim, all bolted on. The back is covered in felt and has a grip and arm strap. ½" thick by 29" round. #801108...\$175 (\$5 addl. s/h)

Cannot be shipped by air





(A)

Viking Prince Ensemble

(A) **Leather Jerkin**-This stunning brown leather, short sleeved jerkin can be worn many different ways or with the padded shirt for the ultimate in dashing attire. High grade leather with a buckle-up front. Sizes S, M, L or XL. #100764...\$239

(B) **Padded Shirt**-A lace-up cotton gambeson that can be worn as a stand alone garment or as an undershirt with our leather jerkin. The sleeves are decorated with a nordic celtic string design. Dry clean only. Sizes S/M or L/XL. #100766...\$60
XXL..\$65

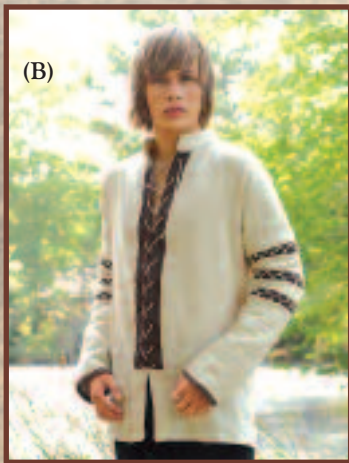
(C) **Cape**-This full length period cape is the perfect piece to complete the look of a true celtic prince. The soft olive green cotton velvet is richly accented with a contrasting stripe, bordered by lacing. Dry clean only. One Size. #100768...\$89

(D) **Velvet Pants**-Comfortable fitting pair of black stretch cotton velvet pants, which has an elastic waist. S/M or L/XL. #100836...\$43



(C)

(D)



(B)

Embossed Viking Helmet

This helmet is rich with deeply embossed detail across and around the crown and on the nose guard. Raised traditional dog designs embellish the hinged cheek plates. 18 gauge steel has an antiqued finish. Approx. 26" inner cir. with an adjustable leather liner with chin strap. Wt.-3 lbs. 12 oz. #300386...\$235



Thor Statue

This faux bronze statue captures the massive strength of the Norse God of Thunder. Resin. Measures 10" tall. #802258...\$39

Viking Wolfhead

This stylized Viking wolf-head pendant is studded with faux emeralds and is 1 1/2" x 1 1/4" and has a pewter finish. 24" chain is included. #201015...\$10



Sword of the Viking King

The Vikings exploded out of the north to raid and settle most of the known world. They also warred among themselves and it was not unusual for kings to lead and engage in combat themselves. This sword and its intricate scabbard are fit for one of those brave Nordic kings. Each steel part is handmade and incredibly detailed, especially on the leather embossed scabbard, then richly plated in real silver. The light, wide fullered Viking style blade is 1095 high carbon, well tempered steel. The scabbard is wood covered in rich harness grade leather with embossing and covered in faux reindeer fur. The beautiful metal parts are applied to the scabbard and the included baldric. Made by Windlass Steelcrafts. Can be seen in the DK book Warrior. #501168...\$295 ✈

Overall-38" • Blade-31" long, 2½" wide, ⅜" thick • Wt.-2 lbs. 12 oz.



Barbarian Helmet

This fearsome helmet has a built-in leather mask and stiff leather lames around the back. The shell is hammered 16 gauge steel with an antiqued finish. Adjustable liner. Made by *Windlass Steelcrafts*®. #300366...\$245

See other Medieval Belts on Pg. 6

Viking Cape

A perfect period cape for those mornings on the fiords. Made of 100% green cotton, with period trim and dual metal chains. Dry clean. One size. #101050...\$70

Visit Our Website
museumreplicas.com



Viking Boot

This style of boot was used for hundreds of years. The low ankle design and soft suede exterior make it a great boot for a variety of outfits. Our version has a rubber sole and heel, allowing for hours of comfortable wear. Whole sizes 7-13. Limited quantities in size 7 and 8. Order brown or black. #100860...\$65



Circa
900

Damascus Viking Sword

Early Viking swords were forged from layers of iron interwoven with strands of steel to produce a very tough sword. Damascus, or pattern welded steel, was used to make the blade strong enough to withstand the rigors of combat. Excavations of a number of Viking swords turned up this lovely damascus specimen in Finland. It has the lobed pommel loved by the Norsemen. The early style blade is well-suited to the quick, slashing blows of the Viking warrior. Our version is made by **Windlass Steelcrafts**® of high carbon damascus steel. Blade is polished with the fuller etched to show the damascus construction of the blade. Pommel and cross-guard are steel. Grip is leather wrapped wood. Scabbard is wood covered in leather with steel mounts. #500262...\$425 ✂

Overall-36" • Blade-31 $\frac{3}{8}$ " long, 1 $\frac{1}{4}$ " wide, $\frac{3}{16}$ " thick • Wt.-2 lbs.

Can be seen in "Records Of The Medieval Sword" on pg. 83 by Ewart Oakeshott.

Circa
850



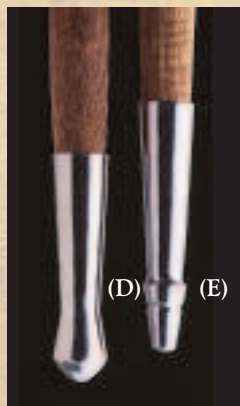
(A)



(B)



(C)



(D)

(E)

Spearheads & Butt Caps

(A) **Hewing Spear**-The Celts as well as the Vikings used this type not for throwing, but as an effective cutting weapon. Blade is $\frac{3}{16}$ " thick x 2 $\frac{1}{2}$ " wide and 13" long. 19 $\frac{1}{2}$ " overall. Socket will fit a 1 $\frac{1}{4}$ " round pole (not supplied). #600062...\$30

(B) **Viking Spear**-Despite the adulation and reverence given to the sword, the spear was generally the weapon of choice for Vikings. Used as throwing weapons and as pikes, spears were an indispensable part of their daily routine. This Viking spear is hand forged of a tough, high carbon steel by **Windlass Steelcrafts**®. Spearhead includes a 4 $\frac{1}{2}$ " steel socket. 9 $\frac{1}{4}$ " long spear head is 2" wide and $\frac{3}{16}$ " thick. 14 $\frac{3}{4}$ " overall. Wt.-1 lb. Pole not included. #600050...\$36

(C) **Long Bladed Hewing Spear**-Although we do not know the exact form and shape of the Viking hewing spear, we do know that they were used. This is a spear that would thrust effectively, and yet have the power to cut decisively. High carbon steel blade. Slim and attractive, it is just

the spear to carry on your next Medieval outing. 25" overall, blade 16" long, 2 $\frac{1}{4}$ " wide. Pole not included. #600444...\$39

Butt Caps-Can be used for any spear since the beginning of the Iron Age. Made of mild steel, and give an improved appearance as well as balancing the spear. These are generic, and do not represent any one specific time or place. Ready to mount. \$25 Each

(D) **Round Ended**-4 $\frac{3}{8}$ " overall. Wt.-8 oz. #600226

(E) **Flat Ended**-5" overall. Wt.-8 oz. #600248



Dark Ages Money Necklace

Before the introduction of struck coins in Celtic lands, ring money was used throughout France, England and Ireland. This collection includes five reproductions of surviving ring currency. Comes complete with a 24" leather thong, so you can wear your wealth proudly. Also includes a cloth bag with Celtic markings and coin history. #802062...\$18

Swedish Viking Sword

This beautiful and unique sword was unearthed in Sweden and can be seen in "Cultural Atlas Of The Viking World" as well as other publications. Quite famous as an artifact, it displays the unknown swordmaker's skill and imagination. The pommel is almost fanciful while the guard displays one of the classic Viking forms. It has the typical wide fullered slashing blade that the Vikings loved. A great chance to own a copy of a well-known sword. Parts are steel and grip is wood covered in leather. Comes with scabbard. Made by *Windlass Steelcrafts*®. #501054...\$255 ✂

CIRCA 950 Overall-39½" • Blade-32¾" long, 2⅞" wide, ⅜" thick • Wt-2 lbs. 6 oz.



Gjermundbu

The Scandinavian goggled war helm was developed in the 8th century and had reached this form by the 10th century. The addition of the steel mask to the basic Spangenhelm offered much better protection to the face than a simple nasal protrusion and was quickly adopted. Though well known to the Viking Raider, mail coifs were seldom worn (except with a shaven head). For protection to the rest of the head and neck a camail "curtain" was often added to the helm, as in our offering. Made from 17 gauge hammer-hardened steel with 16 gauge steel camail with ⅜" diameter links. Made by *Windlass Steelcrafts*®. #300431...\$150

Viking Drinking Horn

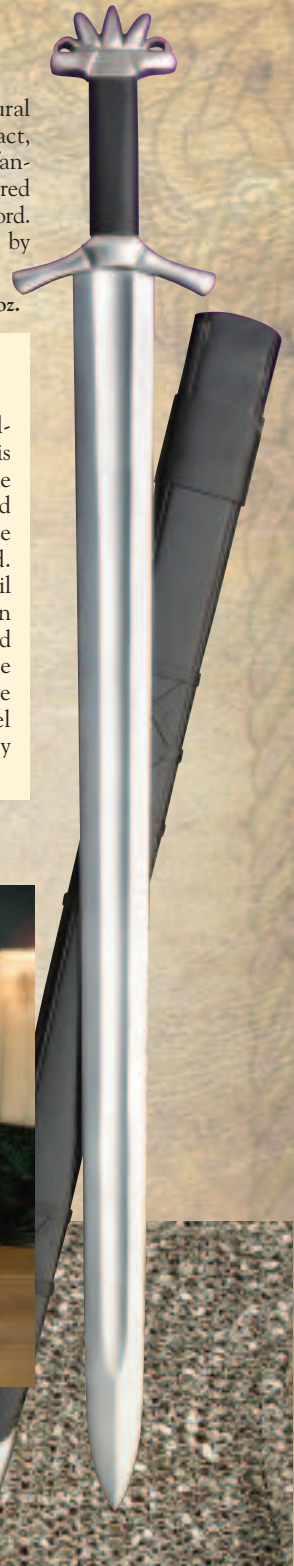
This impressive drinking horn is made by the expert metal smiths at *Windlass Steelcrafts*™ using fine, nickel free pewter, plated in real silver and genuine horn, to hold a modest amount of any of your favorite beverages in medieval style. This stately vessel is perfect for any Viking fanatic and makes the perfect accent piece to your historical themed decor. The ingenious horn vessel is permanently mounted to a beautiful carved pewter stand plated in silver, which keeps the horn upright for display or refills. Slight imperfections in horn are characteristics of horn. #801884...\$95



Dragon Viking Axe

The Nordic warrior held his weapons in great reverence and often lavished them with elaborate decorations. Our example displays a Viking dragon knotwork motif. This is the perfect size for one handed combat in conjunction with a shield. The decorated head is tempered steel and the shaft is from a good hardwood. A great choice to finish out your Viking gear. A Viking's equipment normally consisted of a sword, sax, axe, spear and round shield, the quality of which often indicated a warrior's social status. Made by *Windlass Steelcrafts*®. #600796...\$75

Overall 26¼" • Blade 7" long, 4¾" wide, ⅜" thick • Wt.-1 lb. 12 oz.



ROMAN ARMOR

Made by *Windlass Steelcrafts*®



(A)

(B)

(C)

(D)

(E)

(G)

(H)

(A) Roman Trooper's Helmet-Complete with cheek plates and brass fittings. Formed of 18 gauge steel and brass. Approx. 4½ lbs.

#300074...Reg. \$190...Catalog Special \$145

(B) Lorica Segmentata-Introduced in the ranks of the Roman Army during the first century A.D. and widely used at the height of the Roman Empire. Our replica is superb, made of 18 gauge steel. It is closely copied from a type of Lorica found in Newstead, Scotland, that dates from the second century A.D. This armor is quite flexible and allows plenty of freedom of movement. Wt. 17 lbs. 6 oz. Fits chest sizes 42" to 46". #300176...\$295

(C) Baldric-Brown leather. Fits Maintz & Pompei Gladius. #200368...\$40

(D) Belt-Primarily ornamental, this Roman soldier's belt, called a "Cinculum Militaire", was comprised of a studded leather belt with varying numbers of hanging leather strips. Based on one that was popular about 100 A.D. Will accommodate up to a size 46" waist. #200468...\$65

(E) Greaves-Replica steel greaves are based on patterns pictured on Trajans Columns and feature an articulated knee piece for extra protection. L-18¾", W-8¾", Bend-5½". #300010...Reg. \$77/pair...Catalog Special \$69 pair

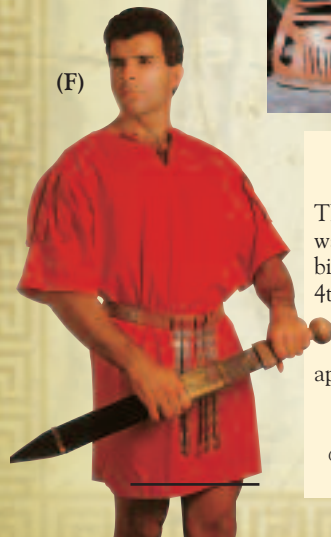
(F) Roman Tunic-This oversized shirt extends to mid-thigh, giving it a distinctive look. Red only. Romans took the color from the Spartan's red cloaks as later did the English army. Spartans wore red so that their enemies would never see them bleed. Male sizes: S, M, L or XL. #100042...\$49 XXL-\$54

(G) Shield-This wooden oval shield, also widely used by the cavalry, is covered front and back with leather. It has a black steel boss and gold leather wings and lightning on the face and arm straps on the back. Curved shield is 23" x 39" by 5/16" thick. Wt.-7 lbs. 4 oz. #801068...\$160 (\$15 addl. s/h, no express)

(H) Roman Sandals-Leather construction. Whole sizes 6-12. Excellent quality.

Brown-#200254...\$49

Black-limited quantity, size 6 & 8 only. #201029...Reg. \$65...
Closeout \$29



(F)

MAINTZ GLADIUS

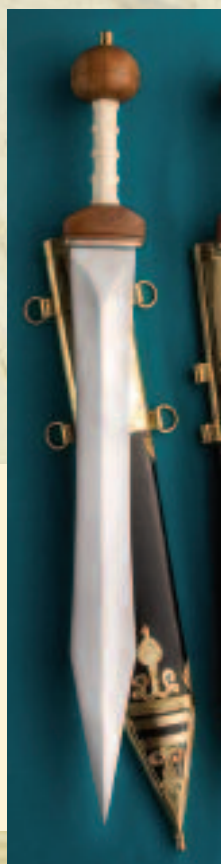
The early Gladius (our version is the Maintz pattern) was wasp waisted with a long point that combined cutting power and stabbing ability in one handy weapon. It was not uncommon to find 4th century legionaires carrying this earlier model. This is the sword that conquered most of the known world. High carbon steel.

Made by *Windlass Steelcrafts*®. Faux ivory grip and ornate brass applique on the scabbard. 2¼" wide. #500360...\$215 ✂

Overall-28" • Wt.-2 lbs. 6 oz.

Blade-19½" long, 2¼" wide, 3/16" thick

Originals were excavated from the ruins of Pompeii. You can see examples in H. Russell Robinson's book "What The Soldiers Wore On Hadrian's Wall."



THE POMPEII GLADIUS

(A) The Roman Army's approach to warfare was direct and pragmatic. It chose the Gladius as its principal sidearm because it was practical and efficient and excelled in any close combat situation. A later version (the Pompeii) was not wasted and had a shorter point but was effective. This is the sword that conquered most of the known world. High carbon steel. Made by *Windlass Steelcrafts*®. Maple hilt. 2" wide. #500598...\$195 ✂

Overall-28" • Blade-19½" • Wt.-2 lbs. 6 oz.

Originals were excavated from the ruins of Pompeii. You can see examples in H. Russell Robinson's book "What The Soldiers Wore On Hadrian's Wall."



(A)

Circa
37 A.D.

ROMAN PUGIO

(B) The distinct shape of the Pugio blade was excellent for a close quarters fight, and was used throughout the legions. A wood hilt is paired with a fully tempered high carbon steel blade. Comes complete with a wood scabbard covered in leather with brass parts. Based on remains in the British Museum. Made by *Windlass Steelcrafts*®. #401392...\$95 ✂

Overall-19¼"

Blade-12¼" long, 2⅛" wide, ⅜" thick

Wt-1 lb.



Circa
100

(B)

ROMAN BELT

This thick leather light brown belt is 2⅛" wide and has a brass buckle and antiqued brass embossed plates. Plates are riveted most of the way around with two hanging rings. This belt will look good with a large range of our swords. S, M, L or XL. #200646...\$48



HELMET STAND

Handsomely accommodates any size helmet from Roman to Great Helms. Beautifully turned hardwood post has sturdy round, beveled base. Stained. 18¼" tall. Comes unassembled. Wt. 2 lbs. 10 oz. #800040...\$30



ROMAN LEGIONNAIRE

Resin man of war shows incredible detail and attention to historically accurate arms and dress. Painstakingly hand painted with several overcoats to give the depth that is normally only seen in high end figures that sell for far more money. Approx. 4" tall. #802122...\$12



COIN NECKLACE OF ALEXANDER

Coins of this type date between 250 BC and 100 BC. The face of the coin is of Alexander the Great adorned with the horns of a ram, or Ammon. This same belief was later introduced to the Romans who worshiped Ammon as the preserver of nature. The reverse side has the goddess Athena dressed for war. This beautiful piece measures 1" across and comes complete with a 20" neck chain. Coin and chain are finished in an antiqued nickel finish. Collector display box included. #802191...\$20



CALL TOLL-FREE 1-800-883-8838



GLADIATOR SWORD

Life in the arena could be ended as swiftly as the combat. Many types of weapons were employed but few were relied on as much as a good sword. This Gladiator Sword, based on an Iberian type, is a no-nonsense weapon with a short blade capable of powerful cuts and lighting fast thrusts. Antiqued brass parts with a hardwood grip shaped for a positive grasp is married to a well-tempered high carbon steel blade. Scabbard included. Made by **Windlass Steelcrafts®**. #501124...Reg. \$145...Catalog Special \$125 ✂

Overall-23½" • Blade-17" long, 2½" wide, ⅜" thick • Wt-2 lbs. 4 oz.



GLADIATOR ARMOR

(A) Gladiator Leather Armor-Adding extra protection from glancing blows, this leather armor allows for easy fighting in the Circus Maximus. Made from soft, yet very tough brown leather strips, this over-vest is perfect when coupled with our protective gladiator belt. Order S/M or L/XL. #100990...\$160

(B) Tunic-The basic blue tunic of a slave, who was chosen to fight for his freedom in the arenas of Rome. This simple rough weaved tunic has unfinished edges, giving it a peasant-like appearance. Blue. S/M or L/XL. #100966...\$39

(C) Belt-This wide kidney belt offers great protection in the Colosseum. Made of an aged-dyed leather, the belt has three adjustable straps with antiqued brass buckles for a secure fit. Brown. Order S/M or L/XL #200972...\$85

(D) Sandals-All leather construction with rubber soles and three adjustable ankle straps. Men's whole sizes 7-13. Brown. #100958...\$74

Vambraces and Greaves-Made from heavy grade leather and though thick, are easy and comfortable to wear. Good for a large variety of outfits. **(E) Vambraces**-#200852...\$40 • **(F) Greaves**-#200854...\$65

(G) Wooden Gladius-Not only were wooden swords used by Gladiators for training, but if he survived the arena and lived long enough to retire, a symbolic wooden gladius (Rudius) was awarded as a token of discharge and freedom. #600774...\$39

Overall-27" • Blade-20" long, 1¼" wide, ⅝" thick • Wt-¼ lb

ROMAN GOWN

This lovely dress is both lightweight and practical. The Roman cut tunic is belted with a generous belt, while the entire ensemble is accented with a flowing floral matching scarf. A poly-cotton blend. S/M or L/XL. Copper Brown or Blue. #101048...\$140

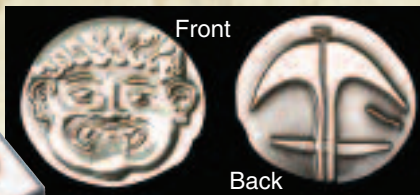


SEE OUR WEBSITE:
MUSEUMREPLICAS.COM
FOR OUR
ATHENIAN GOWN
#101004



ROMAN WOMEN'S SANDALS

A simple, yet elegant sandal made in a gold leather-like vinyl with anti-skid soles. Sizes 6- 10. Whole sizes only. #101034...\$30



COINS OF PERSEUS

Two famous coins are reproduced in this amazing set depicting the mythological adventures of Perseus. One coin has the head of Medusa, the Gorgon who could turn men to stone. The reverse side is an anchor symbol whose meaning is associated with the Gorgon. The second coin is of the Athenian owl, the prized pet of the goddess Athena. The reverse has a portrait of Athena in her full glory. Each coin measures approximately 1" across and is finished in an antiqued nickel finish. A collector display box is included, which holds both coins. #802190...\$25

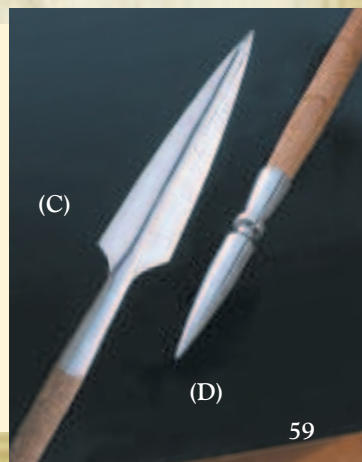
GREEK SPEARHEAD & BUTTCAP

(C) **Spearhead**-the Greek Hoplite's principal weapon was "the long shadowed spear." It was a weapon that varied in length from 6 to 18 feet, and could be used both as spear and pike. The earlier versions were made of bronze, but iron, once it was available, became the material of choice. #600074...\$45

Overall-16" • Blade-11" long, 2¾" wide • Wt.-1 lbs. 4 oz

(D) **Buttcap**-protects the shaft and keeps it from splintering, and gives balance for the spear. #600036...\$22

Overall-8½" • Wt.-1 lbs. 4 oz.



Circa 200 BC



FALCATA

The Celt-Iberians of Greek times were justly famed for the Falcata; one of the most devastating swords ever made! The inward curving blade delivers a tremendous blow and could split both shield and helmet. Considered to be of Greek, or possibly Etruscan origin, this sword spread into Southern Russia and also Spain. It was in Spanish hands that it was most feared by the Romans. The blade is made from high carbon steel. The handle is solid brass. Made by **Windlass Steelcrafts®**. Comes with scabbard. **#500062...\$195 ✂**

Overall-25¼" • Blade-20½" long, 2¼" wide, ⅜" thick • Wt.-2 lbs. 14 oz.

SPARTAN LAKONIA

There isn't any doubt that the Spartan Army was one of the toughest on record. We have copied a Spartan short sword taken from the book, "The Spartan Army". This is a potent weapon that would be superb in the brutality of ancient hand-to-hand combat. The leaf shaped blade is high carbon steel. Grip is bronze, with a wooden scabbard covered in leather. A very effective close combat short sword. Made by **Windlass Steelcrafts®**. **#401178...\$145 ✂**

Overall 19¼" • Blade-14½" long, 2⅜" wide, ⅜" thick • Wt.-2 lbs.

CLASSIC HOPLITE SWORD

The Greek Hoplite was a tough, effective citizen-soldier, and was ferocious in defense of his home city. This is the leaf shaped blade that was quite popular throughout the ancient world and is based on many illustrations and excavated examples. Steel guard and pommel, with wood grip covered with leather. High carbon steel blade capable of taking and keeping a razor edge. Wood scabbard covered with leather. One of the finest of the ancient world's weapons. Made by the craftsmen at **Windlass Steelcrafts®**. **#500734...\$165 ✂**

Overall-28½"

Blade-22" long, 2⅝" wide, ⅜" thick

Wt.-2 lbs. 4 oz.



**Circa 5th
Century BC**



**Circa 5th
Century BC**

GREEK TUNIC

This short cut tunic is perfect for either the market streets or under any Greek armor. The sleeves and bottom hem are accented with a Greek trim which emulates the waves of the Aegean. 100% cotton. Order S/M or L/XL. **#100876...\$39**



**CALL TOLL-FREE
1-800-883-8838**

ETRUSCAN WARRIOR

Resin man of war shows incredible detail and attention to historically accurate arms and dress. Painstakingly hand painted with several overcoats to give the depth that is normally only seen in high end figures that sell for far more money. Approx. 4" tall. **#802120...\$12**





Shirasaya

This handsome Japanese sword is fitted to a mahogany grip and scabbard that are both endowed with beautiful depth and luster. The hand forged blade is from differentially tempered high carbon AISI 1060 steel. The "mune" (back of blade) is 45° Rockwell and the "ha" (edge) is 58° Rockwell. The "hamon" (temper line) is also *real*. Comes with certificate of authenticity, full cleaning kit with instruction booklet, and a cloth storage bag all packaged in a wood presentation box. Made in Longquan China, a sword-making center for 2600 years. **#500992...\$250**

Overall-39½" • Blade-29" long, 1¼" wide, ¼" thick • Wt-2 lbs. 2 oz.



Cherry Blossom Damascus Katana

An incredibly gorgeous hand made katana. Each element is meticulously made and assembled by masters. The carbon steel blade is real Damascus and razor sharp. Effortless cutting ability with amazing feel. Real rayskin handle w/traditional cotton wrap, double pinned. Very intricate iron parts with piercings, scroll work and gold leaf. Heavily lacquered wood scabbard. Includes satin sword bag for protection and display box. You know the feeling of pride from owning something of high quality and this will give you that and more. A katana worthy to be passed down and cherished for generations. **#501212...\$265**

Overall-41½" • Blade-28½" long, • Wt-2 lbs. 6 oz.



Kendo Top/Hakama Pants

Hakama pants were first worn by Samurai and were adopted for Kendo because they provided great freedom of movement. The kendo top is a heavy, 100% white cotton jacket with ¾ sleeves, which is suitable for a variety of martial arts. The hakama pants are 100% black rayon with fully pleated legs and koshiato in the back, which allows ties for a comfortable fit around the waist. Both pieces available in S/M and L/XL

Top-**#100810...\$49** • Hakama-**#100812...\$49**



CIRCA
1400s



Jambiya

The Jambiya is found in every country that has been inhabited by the Arabs, from Turkey to the Balkans, even in Spain. Our offering is of the form found in Persia and India and is worn at the stomach under a sash or belt. Beautiful solid hardwood grip with decorative rondels. Hardwood scabbard covered in thin black leather with nickel tip. **#402118...\$70**

Overall-14¾" • Blade 8¾" long, 2" wide, ⅜" thick • Wt-12 oz.

Sword Walking Staff

Inspired by Old World sword walking staffs and its single edged cousin, our new offering hides a full length double-edged Tai Chi sword blade that is well-tempered high carbon steel. Handle and scabbard are lacquered wood. #500740...\$90 ✂

Overall-42" • Blade-29" long, 1" wide, 3/16" thick • Wt-1 lbs. 10 oz.

(Cannot be shipped to CA, MA, NY or Canada)

Scimitar

The original scimitar was called a shamshir, (which meant "lion's tail") and had a deeply curved blade. Developed in Persia, this type of blade was effective for drawcuts. This blade is quite effective, being able to drawcut as well as slash. Made from high carbon steel by **Windlass Steelcrafts**®. Grip is wood, and the guard and scabbard furniture are steel. Complete with scabbard. #500822...\$235 ✂

CIRCA 1700

Overall-36" • Blade-30½" long, 1½" wide, 3/16" thick • Wt.-1 lb. 8 oz.

Morseman Helmet

This helm has leather straps on the crown and a real horsehair top knot. The brass nose guard and the steel pot have an antiqued finish. Mail skirting protects the neck. Approx. 26" inner cir. with an adjustable leather liner and chin strap. Wt.- 3 lbs. 6 oz. Made by **Windlass Steelcrafts**®. #300388...\$165



Charay

This type of Charay knife (also known as a Charas, Churea and a Salawaryatagan), was first used in Indo-Persia, but quickly spread across the near east, deriving its common name, "Khyber" Knife, from its famed use against the British by the native tribes of the Khyber Pass area. It is still used in Afghanistan, Pakistan and Northern India today. The scabbard is worn thrust, unsecured, in a number of positions under a belt, with blades ranging from 14" to 30". Our offering has an aged finish on the entire knife and scabbard, including the worked and painted brass and buffalo horn grip on a full tang profile with the customary ring at the end of the grip that is often used for a wrist tie-down. The "T" shaped blade has a raised spine along the length of the blade, which allows the blade to be thin to hold a very sharp edge yet remain extremely strong. Made by **Windlass Steelcrafts**®. #501216...\$165 ✂

Overall-42" • Blade-22½" x 2½" x 3/16", 5/16" along spine • Wt-2 lbs. 6 oz.



Robert Jordan's The Wheel of Time™



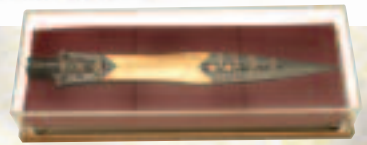
The Heron Mark Sword from The Wheel of Time™ - series by Robert Jordan, one of the most successful fantasy epics published in the last 25 years. We are very proud to offer a Heron Mark sword. The sword is hand-forged, and of a very tough high carbon steel. The guard and pommel are of brass, and the balance is simply superb. Authorized and approved by the estate of Robert Jordan, this sword is an accurate copy of those blades in The Wheel of Time™ series. Once you hold this blade in your hands, you realize how quick and deadly is the sword. A superb example of the swordmaker's art. Scabbard included. Hand made by Windlass Steelcrafts®. Includes Certificate of Authenticity. **#500058...\$275** ✂

Overall-42" • Blade-32" long, 1¼" wide, ⅜" thick • Wt.-2 lbs. 12 oz.

The Wheel of Time™, The Dragon Reborn™ and the snake-wheel ornament are trademarks of Robert Jordan.



Spear of Destiny



More than 2000 years old, it is known by many names, the Lance of Longinus, the Lance of St. Maurice, but it is best known as The Spear of Destiny. Without doubt one of the most coveted artifacts of Christendom. Revered for its mystical power the Holy lance has passed through the hands of many of the worlds most renowned leaders, Emperors and conquerors. Constantine, Charlemagne, Otto the Great, even Adolf Hitler and George Patton. Why? Because after piercing the side of Christ a legend was born that who ever claims it and learns its secrets, holds the destiny of the world in his hands. You can now control the destiny of the spear. This beautiful full scale replica is accurately replicated of iron and brass with steel wire and took hours of research to reproduce accurately. Approx 18" long, includes plexiglass display case. Claim your destiny. **#600792...\$250**



Anime Duster

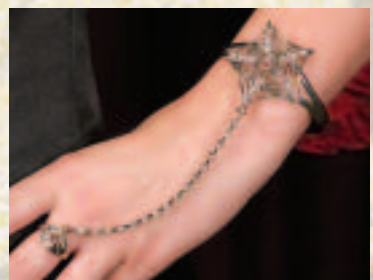
Jumping right from a frame of your favorite anime series, this extra long coat utilizes a series of heavy snaps for a secure closure, while the rugged denim material offers a durable alternative over a standard costume. Long side splits, removable side belts and a high collar. Black size M, L, or XL. Dry Clean. **#100778...\$125**



Croix Sinestre Pendant

Victorian grave cross hangs at a unusual angle, making this a truly unique piece for any occasion. The 2" cross is fine pewter with a blood red stone in the center and hangs from a 22" metal chain. Made in England. **#200718...\$21**

Spider Slave Bracelet



This is truly a unique piece of accent jewelry. The full spider web bracelet is accented with a tiny spider in the center crowned with a red jewel. A fine web of artificial diamonds leads to a spider ring also crowned with a red jewel. One size - adjustable. **#201026...\$25**

The Necromancer

Named for those who could control the greatest of magical forces. This is a sword that could enhance those powers, and defend against the greatest of evils. The blade has a deep black luster and is forged from 1095 high carbon steel with a good temper. The parts are blackened and the two-handed grip is wood with a raised section and covered in textured leather. The scabbard is from the same leather and adorned with polished brass and steel parts. Nicely balanced and capable of katana like cuts. Made by Windlass Steelcrafts®. Includes scabbard. #501206...\$245 ✂

Overall 40¼" • Blade 30¾" long, 1½" wide, ⅜" thick • Wt.-2 lbs. 6 oz.

Wizard's Cloak

Tall and mysterious in this hooded long cloak, our wizard stands out above them all. The hood and the front openings have an eye catching trim in gold and black. Black cotton velvet. One size fits most. Dry clean only. #100004...\$139



Leather & Steel Vambraces

These pieces of armor for the lower arm are made from a double thickness of heavy leather and have antiqued steel riveted on in a decorative pattern. Fine quality made by Windlass Steelcrafts®. #200606...\$90 pair



Raven Claw

This wicked knife's hilt is cast metal and the deadly blade is blackened to a deep black luster. Made by Windlass Steelcrafts®. Includes metal and leather scabbard. #401472...\$95 ✂

Overall-19½"

Blade-13¼" long, 1½" wide, ⅜" thick
Wt-1 lb.

Countess Dress

This full-length, black crushed cotton velvet gown has the bell-cut sleeves and square-cut neckline trimmed with a silver floral pattern, encrusted with dark jewels. The open cut front is lined with a dark silver lame'. Easy lace-up back ensures a stunning, shapely fit. Dry clean only. S, M, L, or XL. #100670...\$120



Call Toll-Free 1-800-883-8838

Blacksword

Feared by orcs, dwarfs, men and evil beasts alike, the bearer of the sword carried out many great deeds until his death while slaying a great evil dragon. Own this beautifully weighted and balanced war sword, worthy of legend. The parts are blackened, the grip is wood wrapped in leather for a secure grasp and the fully tempered high carbon steel blade is blued to a fine black luster. Comes with scabbard. **#501176...\$235** ✂

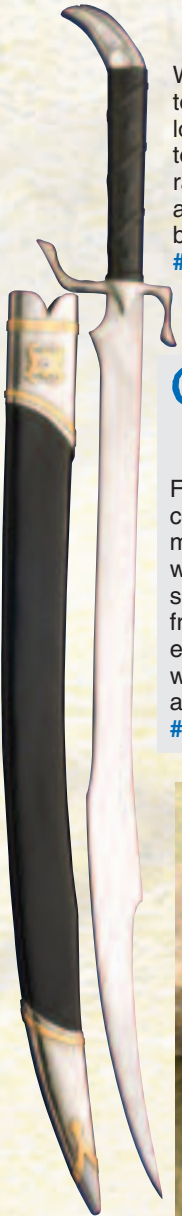
Overall 42" • Blade 32½" long, 1½" wide, ⅜" thick • Wt.-3 lbs. 4 oz.



Raptor

We have named this fantasy sword for the fierce prehistoric predator. The pommel is in the form of its deadly claw, but of course, the long curving blade is the real force of this beast. Gracefully contoured parts are steel and the wood and leather grip is adorned with raised areas for a good grasp. Like all our swords, this well balanced cutting sword features a tough high carbon, fully tempered blade. Made by **Windlass Steelcrafts®**. Includes scabbard. **#501090...\$215** ✂

Overall-41¼" • Blade-31¼" long, 1½" wide, ⅜" thick • Wt-2 lbs. 9 oz.



Gatekeeper Coat

From a video game kingdom comes this awesome long coat made of a shimmering nylon with an extra full hood and bell sleeves. The double-action front zipper allows for a variety of different looks. Complete with a chain of accent crosses and keys. S/M or L/XL. **#100948...\$120**



Overall-18"
Blade-12" long,
1⅜" wide
⅜" thick
Wt-1 lb. 10 oz

Celtic Skull Dagger

Skulls were often placed in sacred areas and at the corners of buildings for protection from enemies and to ward off evil. This large dagger is topped with a skull pommel carved with Celtic designs. The blade is leaf shaped and forged from well-tempered high carbon steel. The grip is hardwood covered in leather which matches the scabbard. Made by Windlass Steelcrafts®. **#402888...\$95**



Chaos Star Pendant

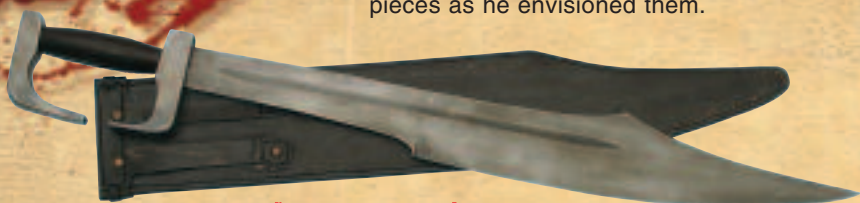
Also known as the arms of chaos, this mysterious symbol which represents all possibilities is cast of fine antiqued pewter with a copper boss. Comes with a 20" chain with clasp. Made in England. **#201028...\$30**

FRANK MILLER'S



Working closely from the source material and with direct consultation with the artist Frank Miller, we proudly introduce a line of fully licensed pieces as he envisioned them.

All 300 items include a full color Certificate of Authenticity.



The sword of sparta

1095 high carbon steel, hand-forged and well tempered 24" blade with fuller. A full tang, with traditional peened over construction. Solid steel parts. Wood grip with genuine leather wrap. Includes "battle worn" full grain leather scabbard and baldric. Features full color certificate of authenticity. 30" overall, Wt.-approx. 3 lbs. #881010...\$195 ✈

Visit our website for even more items from 300



(A) **King Leonidas Helmet**-steel and plated in antiqued brass, fully lined in leather with an adjustable liner and chin strap. Features a genuine horse hair crest. Includes display stand and a full color Certificate of Authenticity. #881003...\$425

(B) **Cape**-Heavy, extra long, distressed 100% cotton. Measures 70" in length. Red only. Dry clean. #881001...\$89

(C) **Vambraces**-plated in antiqued brass with full leather strapping. #881005...\$95

Brooch-Antiqued brass with leather strap and brass snap. Choose round or rectangle. \$24 each

(D) 3" dia. #881012

(E) 3" x 2" . #881008

(F) **Necklace**-Giant 3" wolf's tooth with a 32" leather thong. Resin. #881009...\$20

(G) **Briefs**-All leather, adjustable rear snaps allow for better fit. Order S/M or L/XL. #881007...\$95

(H) **Greaves**-Steel, plated in antiqued brass with strapping allows for a perfect fit. 24½" tall. #881006...\$160

(I) **Sandals**-All leather w/rubber soles and three adjustable ankle straps. Men's whole sizes 7-13. Brown. #100958...\$74

(J) **Shield of Sparta**-Made of steel and richly plated with antiqued brass. It is fully lined on the inside and features the traditional leather hand holds. 36" and weighs approx. 17 lbs. #881004...\$395

(K) **Spartan Helmet**-steel and plated in antiqued brass, fully lined in leather with an adjustable liner and chin strap. Includes display stand. 12" tall. #881002...\$350



© 2008 Frank Miller, Inc. All Rights Reserved.

300, the 300 logo, and all characters featured in 300 and the distinctive likenesses thereof are trademarks of Frank Miller, Inc.

The PHANTOM

Before Batman, before The Shadow, before The Green Hornet, even before The Lone Ranger, the comics' first masked mystery-man hero had long since been striking fear into the dark hearts of the wicked...The Phantom!



The Phantom's 1911 Colt Pistols

These officially licensed, **non-firing** full-metal guns are functional in every way: the magazine ejects, the barrel slides and the trigger pulls. The custom hardwood, black grips are inset with metal medallions of the symbols from the two famous rings he wears. A full-color display plaque, which can be either hung on a wall or stand freely on a shelf, along with a numbered Certificate of Authenticity is included. Strictly limited to **only 250 sets worldwide!** Made by Windlass Steelcrafts™ and the KIMAR gun factory of Italy. #885023...\$275 set Less than 50 remain!



The Rings of Good and Evil

Both the rings of good and evil have been expertly reproduced and plated in **silver**. Each ring has been emblazoned with the opposing seal on either side and both come complete in their own purple collector's display box with a Certificate of Authenticity. Available in men's sizes; 10 or 12 only. **\$75 each**

- (A) Ring of Good—#885025
- (B) Ring of Evil—#885026



Belt Buckle

The Phantom

(A) **Phantom Outfit**—The Ghost That Walks leaps from the pages of the newspaper comics and comes to life in this amazingly authentic outfit. The purple stretch fabric and blue & black trunks make this costume unmistakable! Hidden zipper neckline and real leather mask complete this early superhero ensemble. S, M, L and XL. #885028...\$89

(B) **Double Holsters**—Manufactured of heavy, top-grain black leather. The large metal antiqued belt buckle and hidden side Velcro strips, allows for an easy adjustability for a variety of waist sizes. **Limited to 250 sets worldwide.** #885024...\$125

(C) **Phantom Boots**—These soft synthetic leather boots are perfect for the above Phantom outfit, as well as a myriad of historical & fantasy costumes. 15" high with side zipper Order men's S (8-9), M (10-11) or L (12-13). #101040...\$60



© 2009 King Features Syndicate, Inc.
TM Hearst Holdings, Inc.

ASSASSIN'S CREED™

From the award-winning video game "Assassin's Creed" by Ubisoft, comes this thrilling collection of clothing and weapons designed for your live action adventures.



(A)



(B)



(C)



Tunics of the Holy Land

(A) William of Montferrat-is the Guardian of Acre in King Richard's absence. A truly beautiful tunic of a heavy weave 100% cotton. Quartered in off-white and blood red panels with back-to-back gold embroidered lions rampant and antique gold trims. Dry clean only. Choose S/M or L/XL. **#883007...\$84**

(B) Robert de Sable-proud leader of the Knights Templar, and the sworn enemy of the Assassin Order. Heavy off-white cotton tunic with matching lining. Blood red Crusader's cross is sewn to the chest, while gold trim forms both an outline and sun rays in four directions. Dry clean only. Choose S/M or L/XL. **#883009...\$72**

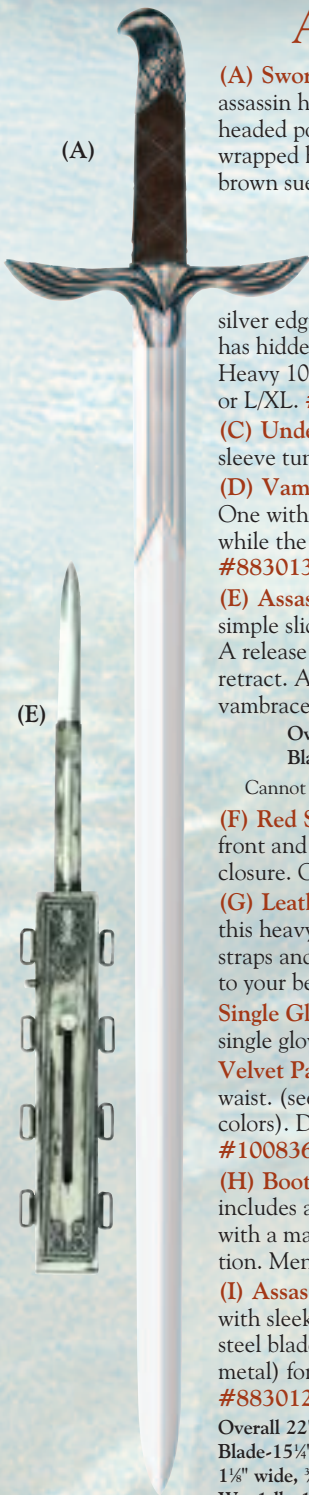
(C) Lionheart Gambeson-worn by both foot soldiers and archers in King Richard's company. A heavy quilted cotton gambeson, quartered in off-white and blood red, with two lions rampant on the chest. Can be worn with or without mail. Dry clean only. Choose S/M or L/XL. **#883008...\$88**

Crusader Priest

This holy follower wears both the blood red front tabard of the Crusades, while also the gold embroidered lion rampant of King Richard. Full pure white cotton robe with matching hood and cap. Heavy gold applique adorns the sleeves. Dry clean only. Choose S/M or L/XL. **#883010...\$149**



Altair the Assassin



(A)

(A) Sword of Altair-this sleek weapon of the assassin has a high carbon steel blade with eagle-headed pommel and winged crossguard. Suede wrapped handle and wooden scabbard covered in brown suede. **#883015...\$190**

Overall 38" • Wt.-2 lbs. 10 oz.
Blade-30 $\frac{3}{8}$ " long, 1 $\frac{3}{8}$ " wide, $\frac{3}{16}$ " thick

(B) Over Tunic with Hood-Full white sleeveless layered tunic with black & silver edging around shoulders. A matching hood has hidden wire for forming the assassin's "look." Heavy 100% cotton. Dry clean only. Choose S/M or L/XL. **#883002...\$109**

(C) Under Tunic-a soft gray 100% cotton long sleeve tunic. S/M or L/XL. **#883001...\$59**

(D) Vambrace-two heavy suede vambraces. One with the embroidered assassin markings, while the other has a "layered" appearance. **#883013...\$80**

(E) Assassin Extension Knife-with a simple slide, this knife locks into place. A release button allows it to slide and retract. Attaches easily to your Assassin vambrace. **#883014...\$125**

Overall 19 $\frac{1}{2}$ " • Wt.-1 lb. 4 oz.
Blade-9" long, $\frac{5}{8}$ " wide, $\frac{3}{16}$ " thick

Cannot ship to CA, NY, MA or Canada

(F) Red Sash Belt-large padded cloth belt with front and back hanging sash. Adjustable velcro closure. One size fits most. **#883004...\$36**

(G) Leather Belt-to be worn over the red sash, this heavy suede belt has three adjustable rear straps and screws to attach your Atiar scabbard to your belt. **#883016...\$149**

Single Glove-leather left-handed open-fingered single glove w/knuckle studs. **#883005...\$19**

Velvet Pants-soft medium gray pants with elastic waist. (see pg. 14 for full photo of pants and other colors). Dry clean only. Choose S/M or L/XL. **#100836...\$43**

(H) Boots-this two-part piece of footwear includes a short suede, rubber soled boot, with a matching suede upper gaiter for full protection. Men's whole sizes 8-13. **#883006...\$240**

(I) Assassin Fighting Knife & Belt-sweeping design with sleek positive grip and decorative high carbon steel blade. Full chest assembly (suede and metal) for covert carrying. **#883012...\$140**

Overall 22"
Blade-15 $\frac{1}{4}$ " long,
1 $\frac{1}{2}$ " wide, $\frac{3}{16}$ " thick
Wt.-1 lb. 12 oz.



(B)

(C)

(G)

(F)

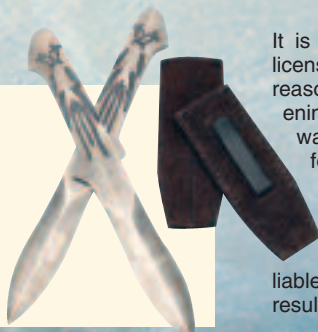
(D)

(H)

(I)

Throwing Knife & Sheath-a compact heavy-duty high carbon steel knife with suede scabbard that uses a belt clip to attach to the Assassin belt. **#883011...\$45 per knife**

Overall 10 $\frac{1}{2}$ " • Wt.-9 oz.
Blade-5 $\frac{1}{2}$ " long, 1 $\frac{1}{2}$ " wide, $\frac{3}{16}$ " thick



It is important to note, when purchasing a licensed collectible, that for legal & liability reasons the licensor may not allow a sharpening service to be performed. This in no way effects the overall value and/or performance of your edged collectible, and unfortunately is not within our power to change. Should you choose to sharpen your edged collectible after sale, the licensor and licensee are not held liable for any damage and/or injury that may result from its use or handling..

MARVEL

Wolverine Jacket

Our replica jacket and dog tag extensively researched and replicated using only the finest authentic materials as worn in X-Men, the first movie of the blockbuster trilogy. The only jacket replicating all details and approved by both Marvel & 20th Century Fox. The jacket is fully lined and made of heavy grade genuine leather with leather accents and then distressed by hand to further reflect the many adventures Logan's been through. With any top grade leather, the more you wear it, the better it looks. Features heavy duty zippers, and a custom X-Men sew in label and custom liner as well as certificate of authenticity. As an added bonus, the jacket includes the real metal dog tag with chain exactly as worn in the film. Sold only as a set, this is a must for any collector and looks as good on display as it does while wearing it. So choose your size, Bub- M, L, XL. **#885019...\$349** • XXL-**\$359**



Prototype shown



Marvel, X-MEN, Wolverine and distinctive likeness thereof are trademarks of Marvel Characters, Inc., and are used with permission. Copyright © 2009 Marvel Characters, Inc. All rights reserved. www.marvel.com

X-MEN Motion Picture and images from motion picture © 2000 Twentieth Century Fox Film Corporation. All rights reserved.

THOR

Hammer of the Mighty Thor

The magic lives on in this full size/scale replica. The head is antiqued aluminum and shows the nicks and cracks that Thor has picked up in his epic battles through the centuries. The inscription reads "Whosoever holds this hammer if he be worthy shall possess the power of...Thor". Also features a solid wood shaft and genuine oiled suede wrap that looks "worn" from years of service. This is an imposing and genuinely stunning piece. Includes custom fiberglass display representing the craggy cliffs of Asgard and full color certificate of authenticity. Act like lightning; only 999 will be made! Overall 17¼". Head 7½" x 4" x 4". Base 24" x 13" x 9". Wt. 5½ lbs. **#885017...\$399**



Classic Thor's Helmet

Designed from Thor's first appearance in Journey into Mystery Vol. 1, #83, is this full-size metal reproduction helmet. This full steel helmet is plated in a gleaming nickel finish. The lightweight wings are made of hand painted fiberglass. Complete with an adjustable liner allowing for a variety of head sizes. This helmet comes with an attractive display stand with metal nameplate and a handnumbered Certificate of Authenticity. Limited to only 1,963 pieces! **#885006...\$369**



**See our website
for other exciting
Marvel Collectibles
museumreplicas.com**

Marvel and all related character names and the distinctive likenesses thereof
TM & © 2009 Marvel Characters, Inc. All rights reserved. www.marvel.com

Iron Man Arc Reactor



The arc reactor supplies energy to an electromagnet, which prevents embedded shrapnel from reaching Tony Stark's heart. Upon escape, Stark retreats from public view, focusing on the design of his latest power suit. Based directly off the actual movie prop and with reference from Stan Winston Studio's, we bring you Tony's "heart" as given to him by his thoughtful assistant Pepper. Perhaps the most iconic prop from the smash hit movie, no expense was spared to replicate the details exactly- from the machined metal parts and copper wire to the high intensity LED's you'll own the definitive prop from this storied franchise and Marvel hero. Arc unit is approx 4½" x 4½" and made from machined aluminum, stainless steel, custom molded plastic and is removeable from the stand. LED's take 4 AA batteries (not included) with a cool burn time of approx. 8-10 hours. Includes plexiglass display case and full color certificate of authenticity. #885034...\$150



IRON MAN™



Iron Man Mark 03 Helmet

This "final" version of Tony Stark's incredible Iron Man armor is the peak of human technological achievement. Equipped with an array of repulsors and missiles, it is nearly unstoppable. This incredibly detailed, replica prop, is based on the actual hero prop provided by Stan Winston Studios. **Only 1500** of this amazing helmet **will be made**. Expertly hand formed steel, with the classic color scheme of plated brass and the deep crimson. This full scale replica is sized accordingly to the actor, and although it is a wearable prop, it may not fit most people. Features a hand numbered Certificate of Authenticity and display stand. 9" tall x 13" long x 8" wide. #885032...\$425

Iron Man, the Movie © 2008 MVL Film Finance LLC. Marvel, Iron Man, all character names and their distinctive likenesses: TM & © Marvel Entertainment, Inc and its subsidiaries. All Rights Reserved.

Captain America 1941 Shield (Variant)

When initially drawn in the iconic comic there were multiple artists used and it's hard to know exactly when, but this variant is drawn into many of the comics with red & white vertical stripes as opposed to the red, white & blue of many original drawings. Artistic license? Either way it gives all you Cap fans a chance to own some very rare and unique comic history. Includes full size, wood display plaque which mimics an old Army crate and is hand stenciled, plus full color, numbered certificate of authenticity. Only 500 will be made so get to it soldier. Expected to begin shipping late 2009. #885018...\$350

\$10 addl. s/h no express

Marvel and all related character names and the distinctive likenesses thereof TM & © 2009 Marvel Characters, Inc. All rights reserved. www.marvel.com



PREMIUM QUALITY I

WARBL

Warlords Swords & Shields-Feature a realistic look and finish, suede wrapped hard rubber handles for superior control and the non-crack finish assures service for many battles. All weapons approved by NERO, Live Action Role Play's largest organization!

\$5 addl. s/h
on (A), (B)
and (C).
(A) cannot
be shipped
by air.

- (A) **Shield Splitter Axe**-Overall: 40". Wt.-approx. 14 oz. #887016...\$65
- (B) **Black Prince Sword**-Overall: 40½". Wt.-approx. 16 oz. #887002...\$60
- (C) **Kingslayer Sword**-Overall: 47". Wt.-approx. 1 lb. #887013...\$85
- (D) **Viking Raider Sword**-Overall: 37½". Wt.-approx. 14 oz. #887001...\$60
- (E) **Valiant Sword**-Overall: 38". Wt.-approx. 12 oz. #887011...\$60
- (F) **Dark Ages Equalizer**-Overall: 30½". Wt.-approx. 12 oz. #887006...\$60
- (G) **Agincourt Warhammer**-Overall: 27" Wt.-approx. 10 oz. #887012...\$48
- (H) **Elven War Dagger**-Overall: 18½". Wt.-approx. 6 oz. #887015...\$42

Visit our website:
museumreplicas.com
for our entire line of LARP weapons and
accessories, plus exciting videos showcasing
many of these pieces in action.



PHOENIX

D. B. Windlass

(I)



(J)



(K)



Shields

(I) Elven-The curved, wood grained finish is accented with hand hammered and riveted antique brass trim. Overall: 44½" high, 23½" wide. Wt.-approx. 1 lb. 12oz **#887024...\$120**

(J) Eye of Doom-centered with a demons eye, sure to strike fear into the hearts of your foes. Overall: 33" high, 19½" wide. Wt.-approx. 1 lb. 8 oz. **#887023...\$90**

(K) Paladin-This shield is a classic, knightly heater-shaped shield. Overall: 26" high, 22½" wide. Wt.-approx. 1 lb. 8 oz. **#887022...\$85**

\$5 addl. s/h on Shields – No Express



(L)



(M)



(N)



(O)

Knightly Tabards

A great simple costume for any event! Strong durable cotton fabric with a full lining. These one-sized tunics are open on the sides and have a front and rear split for great movement. Hand washable. Order (L) Red/Black, (M) Blue/Black, (N) Red/Blue or (O) Yellow/Black. Mail and belts not included. **#101056...\$55**

WARLORDS



Sword Belts & Frogs



Sword Belts-Both of these extra long period belts are made of thick top grain black leather. The fully adjustable built-in frog allows a wide variety of LARP weapons to be carried. This functionality also allows many of our **Windlass** sword scabbards to be fit, as well! Order single sword or double sword belt. Sizes S/M or L/XL. **\$85 each**

(A) Double sword belt-#101082 • (B) Single sword-#101081

LARP Leather Frogs-These high-grade leather frogs will easily slide over almost any belt and will accommodate a large variety of our Warlords swords and weapons. Available for either right-handed or left-handed use. 4 3/4" x 4 1/4" to top of loop. **\$18 each**

(C) Black-Right-handed-#887027 • Left-handed-#887026
(D) Brown-Right-handed-#887027 • Left-handed-#887026



Gambeson

This heavy-duty gambeson was worn by knights and men-at-arms alike. The heavy quilted 100% cotton body makes it a great addition over a shirt of mail. The lacing up the one side, along the torso and also the neck, gives this garment a fitted look, while the high collar adds the needed extra protection. Dry clean. Choose black or burgundy. Order S/M or L/XL. **#100704...\$55**

Shown with the Locksley Gambeson – available on pg 8, Mail Gauntlets on pg. 7 and Leather Gauntlets pg. 34.



PHIDS

D. B. Winchell

Mage Cloak

This generous cloak has a magical sheen to the dark silver polyester fabric. The large bell sleeves and oversized hood will hide both weapons and guard your anonymity. Beautiful matching silver trim finishes this piece. One Size #101083...\$139



Spell Globes

These extremely safe globes are made of soft foam and are perfect for casting your imaginary spells on your opponents. (Sold in set of 6, of one color only) Order bright orange or bright green. #887029...\$10



LARP Helmets


This line of polyurethane helmets is perfect for almost any type of re-enactment possibilities. The tough, lightweight material is near indestructible, while offering the look of real metal and no rust! All helmets have a soft adjustable lining and most offer a chinstrap, for those tougher situations. One size fits most.

(A) Corinthian Helm-#887031...\$169 • (B) Nasal Helm-#887033...\$109

(C) Skull Helm-#887032...\$129

(D) War Hat-#887034...\$139 • (E) Elven War Helm-#887030...\$169

Evening Star

As the sun set and the first star appeared, he would come, slaying all that opposed him. This fantasy war sword has a dark, gleaming finish much like the stone hematite on its worked parts. The grip is long for a powerful two-hand blow and yet is light enough to be used with one hand. The beautiful scabbard is in two tones of leather with steel parts that have the same finish as the sword. Blade is 1085 high carbon tempered steel. Made by **Windlass Steelcrafts®. #501208...\$235** 

Overall-43½" • Blade-34" long, 1⅞" wide, ⅜" thick • Wt.-3 lbs. 6 oz.



The Terminator™ Official Leather Jacket



To celebrate the 25th anniversary of this landmark motion picture, we present a prop never attempted before – a screen accurate version of the T-800's motorcycle jacket. This limited edition jacket has had nothing spared in its research and materials. Using all original surviving resource material, it has been re-created exactly as it was worn on screen. The jacket features police grade leather with zip-out cold weather, custom printed lining and sew-in label celebrating the 25th anniversary. It also incorporates all the safety features of today's motorcycle jackets, to ensure realism and protection, if you want, to wear it when you ride. M(42-44), L(46-48), XL(50-52) and XXL(54-56).



#884800...\$299

©2009 StudioCanal S.A. © All Rights Reserved

PRSR STD
U.S. Postage
PAID
Museum
Replicas
Limited

Museum Replicas Limited™
A Division of ATLANTA CUTLERY CORP.
Box 840 • Conyers, GA 30012
www.museumreplicas.com

Call TOLL-FREE 1-800-883-8838

This code is important for your order.



The Book of Swords

By Hank Reinhardt

One of the most illuminating books ever written about swords and their use. Museum Replicas Limited founder, Hank Reinhardt, spent an entire lifetime studying every aspect of swords – their use, construction, culture, myths, and history. Decades of performing (and enjoying) hands-on research and 10 years of writing went into this collection of hard facts and colorful, historical anecdotes regarding the most revered weapon of all time. Also includes sections on the forms and functions of other bladed weapons and armor. The enjoyable, vastly informative 235 pages are sprinkled with dozens of black & white photos and illustrations. 6⅝" x 9" **hardcover** format. **#802257...\$35**