

Name _____
 Address _____
 City _____
 State _____ Zip _____

Rhone Valley Sword

Known as a "Rhone Valley" type, this hilt form originates from that area of Switzerland. We have taken the liberty of placing it on a good steel blade of the same size as the original bronze one, making for a very nice short sword. Made by **Windlass Steelcrafts®**. #500954...Reg. \$210...Closeout \$145 ✂

Overall 23" • Wt.-3 lbs.
 Blade 18" long, 2" wide, 3/16" thick



Cyborg Skull

Half man, half machine are melded together in this great piece from some future war. The cold-cast porcelain has been expertly metalized, giving it the look and feel of antiqued steel. 7 1/2" long, 5" wide, 5" wide. #801634...\$39

Robotic Skull

You are scheduled to be terminated. An incredible futuristic skull with a metalized finish. All details such as screws, fuses, computer ports, etc. are highly detailed and may give us an eerie look into the future. Cold cast resin. 7 1/4" deep, 4 1/4" wide, 5 3/4" tall. #801388...\$39



Circa 900 BC



Circa 1550

Military Sword Rapier

The blade is a classic sword rapier type, able to deliver a sound cut as well as a thrust. The hilt reflects a transitional period when swordmakers left off the bars of earlier rapier hilts to make it easier to carry, and were working toward the modern military sword hilt. The original is in the Castle Saint Angew, Rome. The parts are steel and the grip is wood wrapped in flat leather lacing for a firm grip. Made by **Windlass Steelcrafts®**. Includes scabbard. #501044...Reg. \$235...Catalog Special \$195 ✂

Overall 43 1/4" • Wt.-2 lbs. 4 oz.
 Blade 37" long, 1 1/4" wide, 3/16" thick

Vambraces & Greaves



Made from heavy grade leather and though thick, are easy and comfortable to wear all day long. Good for a large variety of outfits. Vambraces are great for use with your bow.

(A) Vambraces-#200856...\$42
 (B) Greaves-#200858...\$68

Medieval Ring Cross Pendant

This cross is based upon the relics of an Anglo-Saxon Northumbrian saint. With blue enamel inlay & blue crystal. Includes a 22" metal chain with clasp. Made in England. #200720...\$22



Prices in this catalog supersede prices in earlier catalogs and are subject to change without notice. We are not responsible for typographical errors.



CIRCA 1500s

Flared Long Sword

High carbon steel. Full tang. Steel pommel and and guard. Leather wrapped grip. Comes with scabbard. Made by **Windlass Steelcrafts®**. #500928...Reg. \$245...Closeout \$185 ✂
 Overall-48" • Blade-38" long, 3 1/2" wide, 3/16" thick • Wt.-3 lbs. 8 oz.

Leather Helms

Perfect for reenactors, LARP and faire goers



(C)



(D)

They're lighter and more versatile than steel, while still providing an authentic look and modest protection. Ours are made of very thick harness grade leather, and are copied from our steel styles. Adjustable liners.

(C) Roman Trooper-Approx. 1 1/4 lbs. 24" inner cir. #200548...\$120
 (D) Viking-Approx. 1 1/4 lbs. 25 3/4" inner cir. #200494...\$110

Leather Pouches

Front closures with hand carved camel bone button fronts with loop closure. Black or brown. Fits up to 3" belt loops. 7" wide.



(E)

(F)

(E) Scalloped-7 1/4" high, #200350...\$20
 (F) Acorn-6" high, #200298...\$18

Universal Sword Hanger

The perfect display option for most of our swords, this sword hanger is made from polished steel and has an adjustable bracket. On top is a hole for a nail or screw. Once you hang the sword, the hanger practically disappears taking nothing away from your beautiful edged weapon collection. #801586...\$12



Sword not included.

3 or more \$10 each

Saxon Hilt

A large steel pommel balances the cut and thrust blade very nicely. The guard is also solid steel. Leather covered, grooved wood grip gives a very positive hold. Comes with leather scabbard. Made by **Windlass Steelcrafts®**. #500912...Reg. \$265...Closeout \$169 ✂

Overall-41 1/4" • Wt.-3 lbs. 6 oz.
 Blade-32 1/4" long, 1 1/2" wide, 3/16" thick



CIRCA 1500

Hewing Spearhead

The Celts as well as the Vikings used this type not for throwing, but as an effective cutting weapon. Blade is 3/16" thick x 2 1/2" wide and 13" long. 19 1/2" overall. Socket will fit a 1 1/4" round pole (not supplied). #600062...\$30

Items displaying this icon can be sharpened for additional charge.



Nehru SE

Stylish full-length flowing garment is manufactured of 100% black wool, has a tapered waistline cut for a true form-fitted look and has all buttons covered in a rich black fabric. Fully lined. Available in S, M, L, or XL. Dry clean only. #100698...Reg. \$149...Closeout \$99

Limited Quantity Available



(G)

(H)

Celtic Pendants

These antiqued brass pendants were styled after ancient Celtic rock carvings and evoke the power and courage of the beast. Approx. 1 1/2" in diameter. Reg. \$15 each...Closeout \$12 each

(G) Red Deer...#200662
 (H) Celtic Boar...#200660

DEALER INQUIRIES WELCOME
 1-800-241-3664 Ext. 46

Museum Replicas Limited
 Box 840
 Conyers, Georgia 30012-0840

PLEASE PUT
 STAMP HERE
 Post Office
 Will Not Deliver
 Postage
 Due Mail

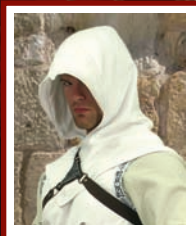


Catalog #102

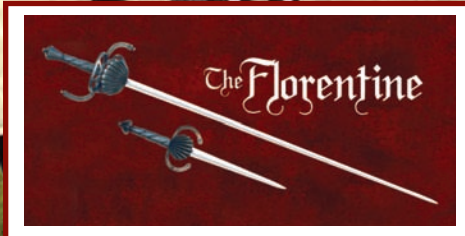
\$3.00

*Historically Accurate
Battle Ready Weapons
& Armor*

*Authentic
Period Clothing,
Jewelry & More*



Assassin's Creed
-see pg. 2B



Florentine Rapier & Dagger
-see pg. 38



15th Century Chalice
-see back cover

Call TOLL-FREE 1-800-883-8838 museumreplicas.com

Cadsand Sword

We have chosen to name this Flemish sword for the Battle of Cadsand, Flanders, where a small Flemish Army stood up bravely to 2,000 longbowmen and finally hand-to-hand combat before being defeated by the English. The sweeping parts are brass and the grip is solid hardwood on an effective medieval cut-and-thrust type blade from well-tempered high carbon steel. Made by **Windlass Steelcrafts®**. Includes scabbard. #501126...\$245

Overall-40 1/4" • Blade-33 3/4" long, 1 7/8" wide, 3/16" thick • Wt.-2 lbs. 12 oz.



Circa
1337



For authentic English Longbows & Arrows, please visit our website: www.museumreplicas.com



Accessories

11, 13, 16,
21-24, 27,
30, 40, 41,
45

Clothing

2b, 2c, 11-20,
25-36, 40-42,
44-46, 48-54, 56,
57, 60, 62, 64,
66, 68, 74, 75

Helmets & Armor

7-10, 12, 13, 15-
17, 22, 25, 27,
55, 58, 60-62,
67-79, 74, 75

Jewelry

2a, 3, 18, 23,
27, 29-35, 39,
48, 47, 50, 51,
56, 58, 59, 62,
68, 70, 71, 75

Sculpture

4-6, 11,
17, 19, 23,
39, 54-56,
59, 61, 64,
65, 75

Shields

12, 16, 38,
57, 60, 67,
69

The Consequences of a Bad Temper



Our swords will flex over 3" and return to true. Shown is a competitor's sword that we flexed. It stayed bent because it wasn't properly tempered.

Flitz® & Windlass® Knife, Sword & Gun Care Kit



Working directly with the pros at Flitz we've come up with what we feel is the ultimate cleaning and care kit available. Our 37 years experience have shown us that each of these products is essential for the complete care of any and all of your valued knives, swords, axes, firearms and almost anything else that needs the best care and protection. The set features the famous polishing paste that works miracles on metals, plastic & fiberglass surfaces, specially formulated stainless steel & chrome polish, Speed Wax® protectant that protects like nothing we've seen and **won't dull your surface finish**. Plus you receive a 12" x 12" specially designed, super soft and absorbent shammy for easy application. All in one handy kit! Protect your investments with the kit used by museums & collectors the world over. #801920...\$25

Cannot be shipped by air. Cannot be shipped to AK or Hawaii.

Courier Satchel

A perfect messenger bag for transporting transcripts from the king, or just your office. The rich dark brown leather has a false stitch around the edges, while an elegant antiqued brass seal adorns the front. A heavy-duty magnet ensures a solid closure. 18" x 12" x 1". #801918...\$95



Candle Tacks

What a perfect way to turn any large candle into a work of art. These antiqued brass colored tacks have a removable stick-pin clasp, which allows for easy application to any candle, or even your favorite garment! Candles not included.

Small Tack-1 1/8" high. #801930...\$8

Large Tack-1 1/8" high. #801932...\$16



©2008 Museum Replicas Limited™

All prices in this catalog supercede previous catalogs.

ASSASSIN'S CREED

From the award-winning video game "Assassin's Creed" by Ubisoft, comes this thrilling collection of clothing and weapons designed for your live action adventures.



(A)



(B)



(C)



Tunics of the Holy Land

(A) **William of Montferrat** - is the Guardian of Acre in King Richard's absence. A truly beautiful tunic of a heavy weave 100% cotton. Quartered in off-white and blood red panels with back-to-back gold embroidered lions rampant and antique gold trims. Dry clean only. Choose S/M or L/XL. #883007...\$84

(B) **Robert de Sable** - proud leader of the Knights Templar, and the sworn enemy of the Assassin Order. Heavy off-white cotton tunic with matching lining. Blood red Crusader's cross is sewn to the chest, while gold trim forms both an outline and sun rays in four directions. Dry clean only. Choose S/M or L/XL. #883009...\$72

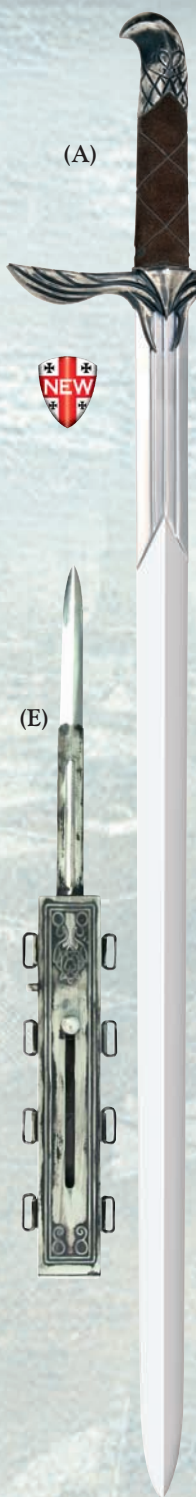
(C) **Lionheart Gambeson** - worn by both foot soldiers and archers in King Richard's company. A heavy quilted cotton gambeson, quartered in off-white and blood red, with two lions rampant on the chest. Can be worn with or without mail. Dry clean only. Choose S/M or L/XL. #883008...\$88

Crusader Priest

This holy follower wears both the blood red front tabard of the Crusades, while also the gold embroidered lion rampant of King Richard. Full pure white cotton robe with matching hood and cap. Heavy gold applique adorns the sleeves. Dry clean only. Choose S/M or L/XL. #883010...\$149



Altair the Assassin



(A)

(A) Sword of Altair-this sleek weapon of the assassin has a high carbon steel blade with eagle-headed pommel and winged crossguard. Suede wrapped handle and wooden scabbard covered in brown suede. **#883015...\$190** ✂

Overall 38" • Wt.-2 lbs. 10 oz.
Blade-30 $\frac{3}{8}$ " long, 1 $\frac{1}{8}$ " wide, $\frac{3}{16}$ " thick

(B) Over Tunic with Hood-Full white sleeveless layered tunic with black & silver edging around shoulders. A matching hood has hidden wire for forming the assassin's "look." Heavy 100% cotton. Dry clean only. Choose S/M or L/XL. **#883002...\$109**

(C) Under Tunic-a soft gray 100% cotton long sleeve tunic. S/M or L/XL. **#883001...\$59**

(D) Vambrace-two heavy suede vambraces. One with the embroidered assassin markings, while the other has a "layered" appearance. **#883013...\$80**

(E) Assassin Extension Knife-with a simple slide, this knife locks into place. A release button allows it to slide and retract. Attaches easily to your Assassin vambrace. **#883014...\$125** ✂

Overall 19 $\frac{1}{2}$ " • Wt.-1 lb. 4 oz.
Blade-9" long, $\frac{3}{8}$ " wide, $\frac{3}{16}$ " thick

Cannot ship to CA, NY, MA or Canada

(F) Red Sash Belt-large padded cloth belt with front and back hanging sash. Adjustable velcro closure. One size fits most. **#883004...\$36**

(G) Leather Belt-to be worn over the red sash, this heavy suede belt has three adjustable rear straps and screws to attach your Atiar scabbard to your belt. **#883016...\$149**

Single Glove-leather left-handed open-fingered single glove with knuckle studs. **#883005...\$19**

Velvet Pants-soft medium gray pants with elastic waist. (see pg. 14 for full photo of pants and other colors). Dry clean only. Choose S/M or L/XL. **#100836...\$43**

(H) Boots-this two-part piece of footwear includes a short suede, rubber soled boot, with a matching suede upper gaiter for full protection. Men's whole sizes 8-13. **#883006...\$240**



(B)

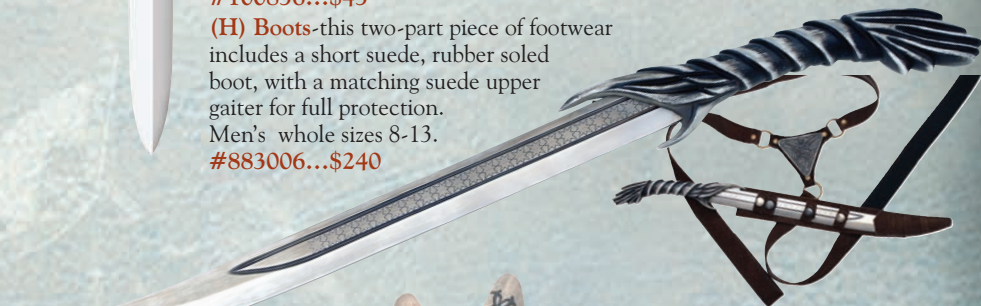
(C)

(G)

(F)

(D)

(H)



Throwing Knife & Sheath-a compact heavy-duty high carbon steel knife with suede scabbard that uses a belt clip to attach to the Assassin belt. **#883011...\$45**

Overall 10 $\frac{1}{2}$ " • Wt.-9 oz.
Blade-5 $\frac{1}{2}$ " long, 1 $\frac{1}{2}$ " wide, $\frac{3}{16}$ " thick

Assassin Fighting Knife & Belt-sweeping design with sleek positive grip and decorative high carbon steel blade. Full chest assembly (suede and metal) for covert carrying. **#883012...\$140** ✂

Overall 22"
Blade-15 $\frac{1}{4}$ " long, 1 $\frac{1}{8}$ " wide, $\frac{3}{16}$ " thick
Wt.-1 lb. 12 oz.



Sword Of Orleans

This late cruciform sword bears five bold crosses on its blade. Legend tells us that the heroine Joan Of Arc bore such a sword during her campaigns in the Hundred Years Wars between England and France. This sword would have made an inspiring sight as it was carried forward at the head of an army. The parts are steel and the grip is wrapped in leather cord. Fully tempered high carbon blade. Made by *Windlass Steelcrafts*®. Includes scabbard. #501098...\$265 ✂
Overall-38 1/2" • Blade-32" long, 2" wide, 3/16" thick • Wt.-3 lbs. 6 oz.

Circa
1430



Knightly Chain

Worn by knights to show they were part of a society known as the Order of Chivalry. This exquisite chain is made of fully-sculpted links and measures a full 36" in circumference. Antique satin brass finish. #200956...\$60

Fleur-de-Lis Flag

While it has appeared on countless European coats of arms and flags over the centuries, the fleur-de-lis is particularly associated with the French monarchy. Double sided, indoor/outdoor nylon. 3' x 5' with metal grommets. #801432...\$12



Circa
1100-
1500

Feasting Dagger

This handy dagger is just right for eating. Knives and hands were used at table in equal proportions for most of Medieval history. This basic dagger type was equally used by commoner and noble alike. It also makes for a perfect every day carry, all around dagger with brass parts and polished hardwood grip. Made by *Windlass Steelcrafts*®. Includes scabbard. #402630...\$65 ✂

Overall-14" • Blade-8" long, 7/8" wide, 1/8" thick • Wt.-10 oz.

Royal Boxes

These quaint metal boxes are the perfect accent piece for any table. The rich silver finish is offset with either a fleur-de-lis design or royal crown. The flip open lid reveals a rich blue velvet interior. Measures 2 1/2" x 2 1/4" x 1 1/4". \$35 each

Fleur-de-lis-#801924

Crown-#801926



CALL TOLL-FREE 1-800-883-8838

Erbach Sword

**Circa
1480**

The origin of this sword rests in the Schloss Erbach Armoury and is a fine example of a high medieval/renaissance sword (classified as an Oakeshott type XVIII A). This is truly a beautiful example of a bastard sword, effective in the cut and the thrust. The steel parts are highly decorative and the high carbon steel blade is lightly hollow ground, giving the sword a great feel with either one or two hands. Made by *Windlass Steelcrafts*®. Includes scabbard. #501058...\$265 ✂

Overall 43½" • Blade 34" long, 2½" wide, ⅜" thick • Wt.-3 lbs.

Can be seen in "Records Of The Medieval Sword" by Ewart Oakeshott.

German War Hammer

Replicated from an example in the German National Museum in Nuremberg. Steel head is secured to the hardwood shaft with steel langets. Brass tacks provide a more secure grip. Made by *Windlass Steelcrafts*®. #600366...\$69

Overall 21½" • Head 1" x 5" • Wt.-2 lbs.

**Circa
1350**



Circa 1250



Belt Dagger

This dagger is a nice size for everyday chores and is just right for the feast table. Well balanced, polished hardwood grip with steel guard and pommel. Black leather scabbard with steel throat and tip. Made from fully tempered high carbon steel by *Windlass Steelcrafts*®. #401386...\$85 ✂

Overall-13¼" • Blade-8" x 1" x ⅜" • Wt-10 oz.

Griffin Statue

As if perched atop the buttresses of Notre Dame Cathedral, this majestic statue will stand guard in your home. Standing 6¼" tall, this cold cast resin piece has been painted and weathered to look like aged stone. Gray. #801778...\$22



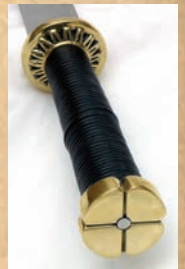
✂ Items displaying this icon can be sharpened for additional charge.

**Circa
1500**

COURT RONDEL



Overall-15⅜"
Blade-10" long, 1" wide, ⅜" thick
Wt.-12 oz.



Rondel Daggers were popular on the battlefield, but were often worn for more civilized functions. This well-decorated fighting knife is perfectly suited for Court, with gleaming brass parts in a stylized flower motif. The grip is wood with round leather cord and the blade is from tempered high carbon steel. Scabbard is included. Made by *Windlass Steelcrafts*®. #402632...\$89 ✂

Effigy Sword

We have taken this sword from the funeral brass of Sir Roger Elmbrygge as a prime example of a sword used for thrusting. Though it's wide enough to cut, armor had become so well made by this period that only small areas of the body were unprotected and a sword with a sharp point was needed to find them. A knight's best armor and weapons were always chosen to be represented on his grave etchings and this sword is a beauty of form and function. The parts are gleaming brass, the grip is wood with leather cord and the sharply tapered blade is from fully tempered high carbon steel on this well-balanced, one-hand thrusting sword. Scabbard included. Made by *Windlass Steelcrafts®*. #501100...\$265 ✂

Overall 38 3/4" • Blade-32" long, 1 7/8" wide, 3/16" thick • Wt.-2 lbs. 6 oz.

**Circa
1435**



THE ROUND TABLE CLUB

Save 15% on Museum Replicas orders.

Start saving today! For a \$50 membership fee, you'll receive 15% OFF on all your purchases for one full year. Your membership begins instantly with your payment! If ordering by phone, just ask the operator to sign you up. If ordering by mail, just write "Round Table" on your order form and include your \$50 payment (be sure to take 15% OFF your merchandise total only!). Remember, membership begins immediately! Cannot be used in conjunction with any other discounts.



Doignard

CIRCA 1390

A forerunner of many long parrying daggers of later years, its long reach made it very effective. It saw much use in its own day as a backup weapon on the battlefield and was carried at court when swords were forbidden, for they made formidable weapons in the hands of an expert. Includes scabbard. Made by *Windlass Steelcrafts®*. #401726...\$95 ✂

Overall-20 1/2" • Blade 14 3/4" long, 1 3/8" wide, 3/16" thick • Wt.-1 lb. 4 oz.



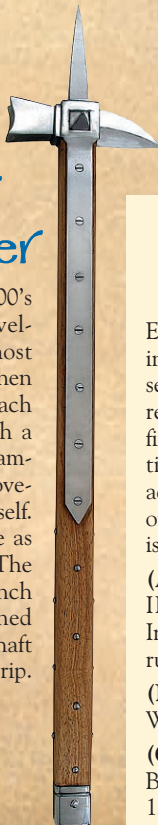
**Circa
1400**

War Hammer

By the mid 1400's armor had developed to the point that it was almost impervious to a sword blow. That's when the knight or man-at-arms would reach for a good solid war hammer. With a few sound blows armor could be damaged and crushed, sorely affecting movement and the ability to defend one's self. This hammer has a large end spike as well as small spikes on the sides. The back spike is thick and able to punch through armor. The head is attached with steel langets to the hardwood shaft which is also studded for a secure grip. #600756...\$125

Overall-26 1/2"
Head-1 1/4" x 5"
Wt.-2 lbs. 4 oz.

Overall-26 1/2"
Head-1 1/4" x 5"
Wt.-2 lbs. 4 oz.



**CALL TOLL-FREE
1-800-883-8838**

Royal Wax Seals

Each of these highly detailed castings were taken from the original seal and hand cast in a durable resin and then given a wax look finish. Each one comes with a certificate of authenticity and will add a look of distinction to your office or library wall. Approx. size is 4". \$60 each

(A) First Great Seal of Edward III King of England, Lord of Ireland and Duke of Aquitaine as ruler-#801818

(B) Edward III (1327-1377) as Warrior-#801822

(C) First Great Seal of Robert the Bruce King of Scotland (1306-1329) as Warrior-#801820



Sword Of Milan

The Italians seemed to favor short wide blades such as the Cinquedeia, whose lineage is readily apparent in this sword. This is a very functional blade capable of shearing cuts. It is also a good size for sword and buckler dueling. The gracefully shaped steel hilt parts are combined with a wire wrapped grip for a good positive grasp. An important addition for your sword collection. Includes scabbard. Made by *Windlass Steelcrafts*®. #501056...\$210 ✂

Overall-34", Blade-27" long • 2⁵/₈" wide, 3¹/₁₆" thick • Wt.-2 lbs. 12 oz.



Circa
1480

Renaissance Dagger

This large parrying dagger is as graceful as it is effective. In a time when everyone carried some type of knife, this dagger stood out as a true fighting knife. The steel parts are decorative but strong and the leather covered grip is grooved for a very positive grasp. The strongly pointed blade is from tempered high carbon steel with decorative short fullers. Scabbard included. Made by *Windlass Steelcrafts*®. #402558...\$95 ✂

Overall-18³/₈" • Blade 12" long, 1¹/₄" wide, 3¹/₁₆" thick • Wt.-1 lb. 4 oz.

Circa
1470

Saint Michael Statue

Saint Michael, together with St. George, became the patrons of chivalry during the Middle Ages. This gorgeous sculpture is based on Guido Reni's painting "Archangel Michael" housed in the Capuchin church of Santa Maria della Concezione, Rome. Standing an impressive 14¹/₂" tall, this cold cast resin statue depicts Michael trampling Satan and has been metalized, giving it the look and feel of actual antiqued bronze. #801572...\$40



CALL TOLL-FREE
1-800-883-8838



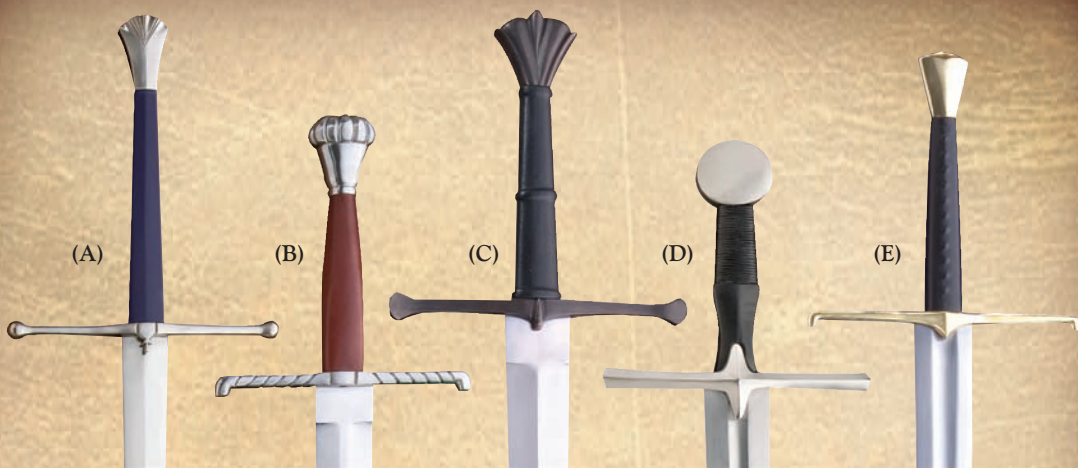
Sword Letter Openers

These letter openers are the perfect functional accent to any home or office decor. Crafted in steel, each piece is a small version of a full-size sword and represents a style unique to its own time in history. Each is provided with its own stand and is packaged in a beautiful box.

(A) Katana-11" overall. #801868...\$90

(B) Roman Gladius-6¹/₄" overall. #801866...\$42

(C) Knightly Sword-8" overall. #801862...\$48



Visit Our Website For More Medieval Swords

- (A) English Two-Hand Sword-#501060...\$285 ✂ • (B) German Sword-#501066...\$265 ✂
 (C) Verneuil-#500974...\$285 • (D) Polish Sword-#501062...\$230 ✂
 (E) Oakeshott Type XIIA Sword-#500998...\$245 ✂

www.museumreplicas.com

✂ Items displaying this icon can be sharpened for additional charge.

Bruce Brookhart

As head of Development and Design, Bruce Brookhart's accurate edged weapons replicas and imaginative designs have appeared in our catalog for over 15 years. Not only has Bruce visited and photographed many of the major arms collections, both in the USA and Europe, he has had the good fortune to work closely over the years with Mr. E. Oakeshott and Mr. H. Reinhardt.



Medieval Practice Weapons

A wooden sword or "waster" allowed a warrior to practice full combat safely and economically while preserving his precious steel for the real battle to come. Fully seasoned and hand crafted in solid hardwood, with contrasting wood guard and pommel. Each can take the abuse of sparring and reenacting, even edge-to-edge. (*Keep in mind, however, that wood can break along the grain.*) The designs represent edged weapons common from the 12th to 15th centuries.

(F) Two Hand-48¼" overall. 37" blade, 2" wide. Wt. 1 lb. 4 oz. #600598...\$45

(G) One Hand-38¼" overall. 31¼" blade, 2" wide. Wt. 1 lb. #600600...\$39

(H) Dagger-17¼" overall. 11½" blade, 1½" wide. Wt. 5 oz. #600602...\$29



Mail Gauntlets

To protect the back of the hand, we have added mail on our black leather gauntlets and also placed slightly cupped steel lames all around the cuff. These offer good protection to the hand, wrist and lower arm from a sword slash or draw cut. Historically correct from the Early Middle Ages well into the Renaissance. XS, S, M, L or XL. #300008...\$75

German Gothic Armor



As seen in the History Channel series Conquest

The last half of the 15th Century saw armor reach its apex of beauty, in both form and function. This type of armor would have been a common sight on the battlefields of the War of the Roses. Mail Shirt not included.

(A) Salade With Bevor-Suitable for foot or mounted combat, this two-tiered helmet was prized by both knights and men-at-arms.

The Salade (or English Sallet), which possibly originated in France or Burgundy, was constructed with a tail to protect the back of the head and neck. The version we've copied sits flush on a bevor, which protects the chin and throat. The original is believed to be English and dates from about 1480. Features the moveable visor and a bevor with falling buff like the original. Forged of 18 gauge steel, both the Salade and bevor are fully lined and wearable. **#300148...\$235**

(B) Pauldrons-Right and left shoulder protection. Beautifully fluted and with open work. **#300224...\$150**

(C) Rerebrace, Vambrace, Couter-Upper and lower arm sections joined by the elbow coup. Right and left sides are open on the inside to fit a large range of arm sizes. Also, has some lateral adjustment. **#300222...\$150**

(D) Mitten Gauntlets-These beautifully worked gauntlets protect the wrist and complete hand when closed around a weapon. Mitten form fits a large range of hand sizes. **#300226...\$175**

(E) Cuirass With Tassets-This consists of the breast and back plates with their fauld and tassets (upper thigh protection). Handcrafted of 18 gauge steel. Approx. weight-17 lbs. Fits up to 46" chest. Waist 38". **#300100...Reg. \$525...Catalog Special \$450** (\$15 addl. s/h)

(F) Gothic Leg Armor-To finish the armor, fully articulated legs with the same fine details throughout. This type of leg armor ends a little past mid shin and is meant to be worn with heavy leather boots. **#300412...\$365**

(G) Pole Axe-With a long history of use, the pole axe was very popular in the lists, with the winner being decided by the number of blows fairly struck. It was also quite popular for use on the field of battle. With a good sharp point it could be used as a short spear, the back or spike could be used to pierce armor, and the axe head itself was quite lethal. Superb copy, with a high carbon blade and langets to protect the shaft. A magnificent example of a polearm. Made by **Windlass Steelcrafts®**. **#600640...\$145** (\$5 addl. s/h).

Overall 68" • Head Spike-10" wide • Wt.-4 lbs. 12 oz.

CALL TOLL-FREE 1-800-883-8838



Mail Armor

From the Celts of 300 B.C. to 18th century Asia, mail was one of the most prized items a warrior could own. The "Foe of Swords" probably derived the name "mail" from the latin "Macula" meaning net. Made from mild steel similar to the originals; because of the large surface area to volume of each link, this armor was highly susceptible to rust. In fact, most mail was allowed to darken and was then oiled. Express delivery not available on mail.

With history and your needs in mind, we present to you six choices of mail, more than you'll find from any other source. 16 gauge links are combined in the "International" pattern - 4 links through a 5th - common to all European mail. Coifs can be worn with or without a helmet. Outer link diameter of each link is about $\frac{7}{16}$ ", inner link dia. is about $\frac{3}{8}$ ". Mail shirts fit up to a 54" chest. 33" long shirt and sleeves are approx. 18" and hang to just below the elbows on average-height warriors and weigh 23 lbs. Coif weighs 5 lbs. 8 oz. (Except Flattened Steel and Aluminum Mail). Made by Windlass Steelcrafts®.

Butted Steel-we recommend keeping this mail oiled when not in use.

(A) Coif-#300188...\$95 • (B) Shirt-#300170...\$250

Catalog Special Butted Mail Shirt (A) & Coif (B)...\$299

Mail Shirts \$6 each addl. s/h • No Express Delivery

ALL HISTORICAL ARMOR IS FAITHFULLY COPIED FROM EXAMPLES IN MUSEUMS & PRIVATE COLLECTIONS.



Hero's Mail

The smaller and finer worked the rings are, the more protection. Butted, 17 gauge steel rings are only $\frac{3}{16}$ " round providing unsurpassed protection. Incredibly dense, the rings provide the ultimate defense against whatever comes your way.

Coif-one size fits most. #300088...\$135

Shirt-as a result of the number of links needed, this is not lightweight. Approx. 31" long. 55" chest. 31 $\frac{1}{2}$ lbs. #300042...\$325

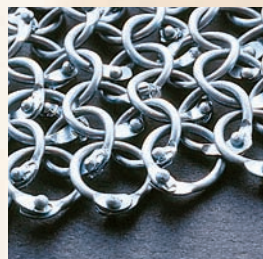


Blackened Steel

Intimidating butted armor, blackened for moisture resistance. Reminiscent of the Black Prince, who purposefully let his mail darken to a blackish hue.

Coif-#300076...\$120

Shirt-#300058...\$310

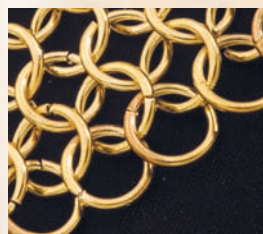


Riveted Steel

The most sought after and difficult mail to make. End of each mild steel link is flattened and riveted. Prized for its durability. Dipped in zinc to prevent rust.

Coif-#300126...\$245

Shirt-#300108...\$695

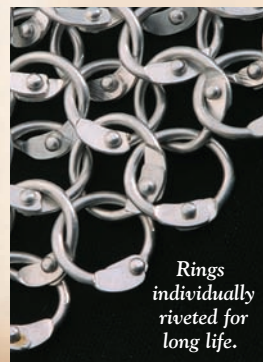


Plated Brass

Steel rings plated with brass for long lasting good looks.

Coif-#300122...\$110

Shirt-#300102...\$275



Riveted Aluminum

Perfect for reenactors or stage performers who need authentic looks, but don't need authentic weight! This extremely light mail utilizes aluminum rings, riveted for durability. Even if you wear it all day long you'll hardly notice the weight. Outer diameter of rings is about $\frac{1}{2}$ ".

Coif-weighs only 2 lbs.

#300150...\$180

Shirt-weighs only 7 lbs.

#300138...\$545

Rings individually riveted for long life.



Roman Mail

Mail, called "Hamata" by the Romans, was in use before the reign of Caesar until well after Trajan. Shirt is trimmed in leather at the arms and throat and has removable studs for attachments. The butted rings are blackened. One size fits most. Will accommodate up to approx. size 50" chest. Mail only. #300398...Reg. \$325...Catalog Special \$265

Manufactured by Windlass Steelcrafts®.

As seen in the HBO Production, "Rome."

Oakeshott Type IV

This medieval arming, or short sword features, a blade that swells slightly at the top to put more weight in the hand to improve its cut and thrust capabilities, making for a very fast sword. The furniture is steel and the grip is wood covered in leather. A very effective and important sword. Includes matching scabbard. Made by *Windlass Steelcrafts*®. #500972...\$245 ✂

Overall-33 3/8" • Blade-26 1/4" long, 2 3/4" wide, 3/16" thick • Wt.-2 lbs. 14 oz.

Can be seen in E. Oakeshott's book "Records Of The Medieval Sword".

CIRCA
1300



Horn Rondel Dagger

The Rondel Dagger was significantly popular, as witnessed by the frequency with which it appears on grave monuments. This replica is unusual because it has a full profile tang with polished buffalo horn scales and a mushroom shaped pommel. The blade is high carbon steel and comes to a strong point. Fully tempered. Made by *Windlass Steelcrafts*®. Includes scabbard. #402258...Reg. \$95...Catalog Special \$84 ✂

Overall 17 1/2" • Blade 12" long, 1 1/2" wide, 3/16" thick • Wt.-1 lb. 2 oz.



Arming Cap

Worn under a helmet or coif, the arming cap offered extra cushioning for the head. Although the original cloth caps were widely stuffed with rags and straw, our poly/cotton cap is thickly lined with fiber fill. Machine washable. Quilted construction with a tie cord. S (for 21" head circumference), M (22"), L (23") and XL (24"). #200174...\$30



Great Helm & Matching Bascinet

These two beautiful helmets were worn in conjunction to give superior protection to the head of an armored knight.

(A) **Great Helm**-There are examples of this type of Great Helm in the Royal Armoury at Leeds and the Royal Scottish Museum in Edinburgh, as well as on many grave effigies throughout Europe. In use from about 1350 forward. Normally worn over another helmet. #300404...\$245

(B) **Bascinet**-Although not displayed in conjunction with the helms at the above museums, it is present on almost all of the grave effigies. Worn under the Great Helm, it is made for superior head protection and could be worn alone for foot combat. Adjustable liner. #300406...\$245

Great Helm & Matching Bascinet - Set \$441

Legendary Tunics

Nobly leaping from the pages of literature, comes two magnificent tunics. Inspired by Howard Pyle's classic story of chivalry, *Men of Iron*. Both tunics are 100% cotton with a linen lining. Order S/M or L/XL.

King Arthur-regal sky blue tunic of King Arthur, with its three applied embroidered heraldic golden crowns, relives the many tales of Sir Thomas Malory's *Le Morte d' Arthur* and the legendary Knights of the Round Table. #100968...\$75

Falworth-black outer surcoat emblazoned with a blood red griffin and a matching red lining. #100970...\$75



Knightly Headbands

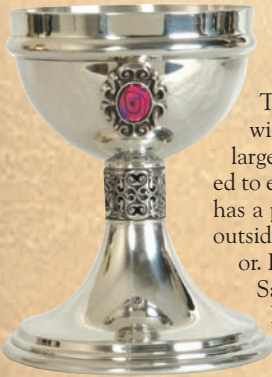
A perfect compliment to any mail coif. Bands are stretch velvet, laced with a gold trim. Six gold laces in the back allow you to tie it securely. Black, Red or Blue.

#100992...\$24 each



See pg. 9 for Chain Mail, pg. 13 for Transitional Helmet, pg. 7 for Mail Gauntlets, pg. 40 for Leather Gauntlets and pg. 16 for Tunic Belts.

Glastonbury Grail



This grail-form goblet, rich with Celtic design, has two large abalone cabochons mounted to either side. This stunning cup has a polished mirror finish on the outside and a brushed metal interior. Pewter and measures 6" high. Safe for drinking. Made in England. #801566...\$95



Knights of the Round Table

The legends of Camelot and the brave knights of King Arthur are all reproduced in this cold-cast porcelain piece. Each knight is hand-painted and has his name written on the back of the base. The table measures 11 1/2" in diameter and has been adorned with Celtic designs. A truly magnificent display piece for office or den. #801668...\$99

Gold King's Crown

Throughout the course of history, the most iconic piece of apparel that has defined royalty has been the crown. This magnificent piece is manufactured of metal, has over 250 artificial diamonds and measures a full 24" in circumference. With little effort, this piece can be shaped for almost any size head. #200984...\$120



Legends Of Sherwood



Outfit Combinations

(A) Robin of Locksley Gambeson-This heavy two-piece garment consists of a corduroy undershirt with padded and studded sleeves and a quilted sleeveless gambeson. Both pieces are manufactured of a chocolate brown corduroy. The gambeson portion can also be worn with either the Outlaw Shirt shown on this page or a garment of your choice. S/M or L/XL. Brown only. #100476...\$95 XXL...\$100

(B) Outlaw Shirt-tough heavy cotton weave fabric offers long lasting durability. The shirt has a leather lace-up front and buttons on the wrist. (Leather wrist bands sold separately) This piece can be worn by itself or under the Locksley Doublet in place of the studded corduroy shirt. S/M or L/XL. Deep hunter green only. #100472...\$39 XXL...\$44

(C) Locksley Pants-Made of a durable heavy cotton, the pants have an elastic waistline, allowing for an easy fit. S/M or L/XL. Brown only. #100474...\$36 XXL...\$41

(D) Locksley Boots-Suede, calf-high boots. The lace-up front allows for a good solid fit. A hard sole has been added for long all-day adventures. Brown only. Men's sizes 7-13. #200554...\$85

(E) Robin Hood Belt-A perfect addition to the Gambeson, this belt is manufactured of top grade leather and is nickel studded. Specify S, M, L, or XL. #200576...\$36

CALL TOLL-FREE
1-800-883-8838

LIONHEART FLAG

The royal standard of King Richard I of England. Indoor/outdoor nylon. 3' x 5' with metal grommets. Flag is double sided. #801430...\$12



CRUSADER SHIELD

This solid shield measures a full 32" x 20" and is made of curved wood, covered in a white canvas with a red (color may vary) painted cross emblazoned on the front. Leather arm and shoulder straps. #801508...\$185 (\$5 addl. s/h)



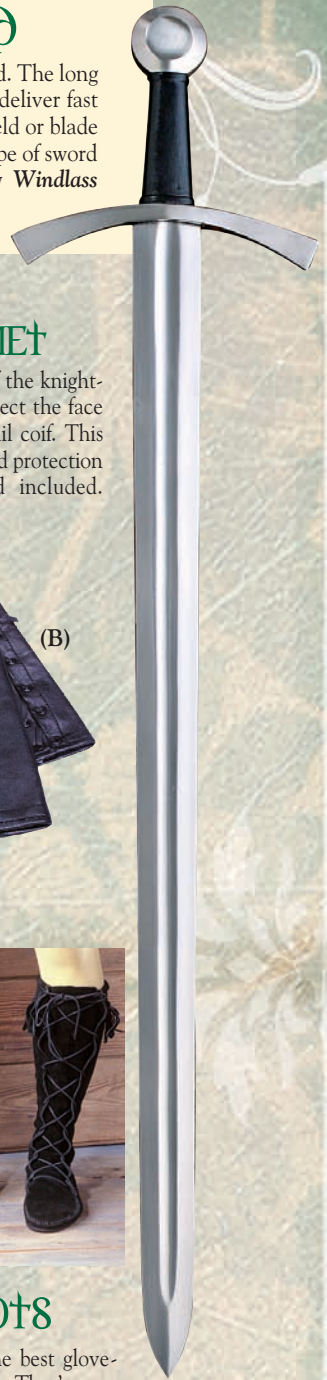
HELM WITH CROWN

Perhaps the most famous crusader of all was "Richard the Lionheart." It is made from 18 gauge steel with brass details and has a beautiful brass crown. It is open faced for good vision and easy breathing and has an adjustable liner with chin strap. Truly a regal helm. #300420...
Reg. \$215...Catalog Special \$189

CLASSIC MEDIEVAL SWORD

This sword is an Oakeshott Type X with a Type I pommel and a Type VII crossguard. The long and wide fuller on this blade lightens the sword overall and makes it possible to deliver fast and shearing cuts. The long guard offers good protection from an opponent's shield or blade while the classic wheel pommel brings the sword very nicely into balance. This type of sword was in service for a long period of time throughout all of Europe. Made by *Windlass Steelcrafts*®. Includes scabbard. #500020...\$195 ✂

Overall-39½" • Blade-33" long, 2" wide, ⅜" thick • Wt.-3 lbs.



TRANSITIONAL HELMET

This is an excellent example of the evolution of the knightly helmet. It is one of the first attempts to protect the face with more than just a nasal extension or a mail coif. This helm continued on to become the complete head protection of the barrel helm. 18 gauge steel. Stand included. #300394...\$185 (\$5 addl. s/h)

ARM GUARDS

Soft leather to provide just enough surface protection from a glancing blow, but remain supple enough for full hand/wrist motion. Choose brown or black in either style. 9½" long. \$24 Pair

(A) X-Strap-#200458

(B) Plain- #200420



MEDIEVAL BOOTS

These well-made boots are cut from the best glove-tanned leathers and have an all-suede finish. They're very warm and comfortable. Inside is a ⅜" thick, cushioned insole. What's even better is that they have a hard sole, so you can wear them all day long at fairs and festivals. With a little judicious decorating, they can range from Viking to Scythian, from the Franks to the Renaissance. Men's sizes 7-13 . Choose brown or black.

(C) Low Boot-\$49 With Fringe-#100294 • Without Fringe-#100322

(D) High Boot-\$68 With Fringe-#100256 • Without Fringe-#100282

LIONHEART TUNIC

There was no more romantic figure in history than King Richard of England, known as "The Lionheart." This magnificent tunic is made of a rich red cotton velvet and has the king's original coat-of-arms, the double gold rampant lions emblazoned on the front in stunning embroidery. The tunic has an opening in the front and back for easy riding. Choose S/M or L/XL. #100806...\$59 XXL-\$64

Medieval Long Belt-Made of a thick, top grain leather, it is richly adorned with antiqued and polished brass accents, buckles and belt tip. Brown only. One size: approx. 70". #200672...\$110



BARON'S SWORD

The English barons were a bold and independent lot and rose up in arms against more than one king. We have named this impressive war sword in honor of these strong willed men. The long cutting blade is from fully tempered high carbon steel and the strong parts are also steel joined with a grip of wood, cord and leather. Though light enough to be swung with one arm this sword truly excels when used with both hands. Well-balanced and weighted. Scabbard included. Made by **Windlass Steelcrafts®**. #501086...\$250 ✂

Overall 44 3/4" • Blade 36 1/4" long, 1 1/4" wide, 3/16" thick • Wt.-3 lbs. 6 oz.



Can be worn as an everyday tunic

(A)



Archer's cut sleeve

(B)



(A)



LORD OF HUNTINGDON ENSEMBLE

The woods of Sherwood come alive in this striking outfit.

(A) Green Over Tunic-can be worn alone or with any under garment. The "archer's" sleeves fall freely open when your arm is raised, while the full hood allows for perfect anonymity. Both tunic and hood are edged with a brown medieval trim. 100% cotton. S/M or L/XL. #100986...\$90

(B) Brown Under Tunic-is a great piece of medieval clothing suitable for feast or everyday wear. Combined with the green over tunic, the two make for an adventurous combination. Eyelets with leather lace embellish the collar. 100% cotton. S/M or L/XL. #100988...\$45

(C) Velvet Pants-A perfect alternative to wearing tights. Looser fitting, yet still dashing, these comfortable pants are made of a beautiful stretch velvet and are perfect for a large variety of period clothing. Order S/M or L/XL. Black, Soft Green or Gray. #100836...\$43

Vambraces can be found on pg. 62.



(C)



BATTLE OF DOVER SWORD

Circa
1200

A knight demanded that his sword be a good one, but also fair to look upon. This sword is both. Its beautifully carved solid hardwood grip provides a very secure hold and its fluted pommel balances it nicely. The guard is long for good protection from a sliding shield or weapon, and both are from antiqued brass for ease of care. Altogether an effective one hand sword. Made by *Windlass Steelcrafts*®. Includes scabbard. #501076...Reg. \$235...Catalog Special \$179 ✂

Overall-40" • Blade-33" long, 2" wide, 3/16" thick • Wt.-3 lbs. 9 oz.



FIGHTING STAFF

When the Normans forbade the bow and sword to Saxon commoners they could defend themselves with a quarter staff. Fighting with one is an art in itself. Crafted from hickory in the United States. Approx. 72" tall. 1 1/2" round. Wt. 2 lbs. #600752...\$29 (\$5 addl. s/h)



NEW NORMAN HELMET



The Normans spread to England, Sicily and parts of Italy as mounted warriors known for their long mail hauberks, kite shields and conical helmets. This type of slightly curving forward peaked helmet is the second most recognized form.

The conical shape allows blows to slide off. The face was provided some protection with the nasal piece which still allowed great vision. Has a handsome aged finish and adjustable liner. #300424 ...Reg. \$165...Catalog Special \$150

CALL TOLL-FREE
1-800-883-8838



MONK'S ROBE

This may be the most versatile and modest garment one could own, but don't let its simple looks fool you. The person wearing it has most likely earned it through religious, magical or other secretive means. It was a mark of humble accomplishment and immense power. Rough textured fabric is 100% heavy cotton weave and generously cut for the most devoted. Includes long tail hood and waist cord. One size fits most. Dry clean only. Choose **brown, green or black.** #100298...\$95 XXL-\$100

KNIGHT'S TEMPLAR



(A) **Tunic Detail**

(A) **Templar Tunic**-This heavy cotton sleeveless tunic has been dyed a bright white. The Order's Maltese styled red cross has been applied over the heart, while a full linen lining has been sewn on the interior. Dry clean only. Choose S/M or L/XL. #100936...\$65

(B) **Templar Cape**-This long matching cape is one of the heaviest and most elegant we have ever offered. The stark white color is offset with a large red cross on the left side, while the interior boasts a matching red lining. Heavy cotton with corded tie. One size. Dry clean only. #100938...\$145

(C) **Crusader Helm**-Developed early in the 12th Century, the Great Helm became the mainstay of the medieval fighting man, and lasted for about 300 years. Worn over a mail coif and padding this helm has menacing, narrow eyeslits for maximum protection. Made by Windlass Steelcrafts® from 18 gauge steel. #300418...\$185



(C)

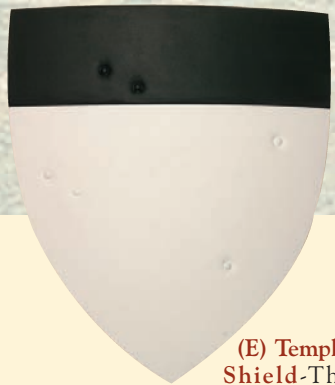


(D)

(D) **Medieval Sword & Tunic Belts**-Colorful long belts for both your tunic and your sword. Thin (1") belt looks great worn over tunics. Wide (2") belt will accommodate most frogs. All belts are heavy grade leather and extra long - 70".

Red Belts-Have antiqued brass Maltese crosses. Wide-#200680...\$95 • Thin-#200878...\$75

Blue Belts-Have antiqued silver crosses. Wide-#200682...\$95 • Thin-#200880...\$75



(E) **Templar Shield**

-This high quality shield is made of a curved wood and heavily padded with a durable canvas. The black and white shield has adjustable arm straps and padded arm guard on the back. 22 1/2" x 25" tall. #801570...\$165

✂ Items displaying this icon can be sharpened for additional charge.

TEMPLAR FLAG



A striking 3' X 5' nylon indoor/outdoor with grommets, this flag is emblazoned with the red cross of the crusades and four crosses of the Templars. #801444...\$12



Overall-15" • Blade-10" long, 1 1/8" wide, 3/16" thick • Wt-1 lb.

SOLDIER'S DAGGER

This stands out as the sort of weapon that the hard-bitten professional fighting man would prefer, with a blade capable of taking a razor edge with a good strong sharp point. Steel guard and pommel, with a grip wrapped in leather cord, this knife is attractive, but above all - serviceable. Made by Windlass Steelcrafts®. Includes leather scabbard. #401760...\$90 ✂

BATTLE OF HATTIN SWORD

Red crosses are inlaid into the ends of the guard and a cross is carved on both sides of the pommel. The wood grip is covered in leather and can be used with one or two hands. The blade is fully tempered high carbon steel and the scabbard is included. Made by Windlass Steelcrafts®. #501016...\$210 ✂

Overall-41" • Blade-34" long, 1⁷/₈" wide, 3³/₁₆" thick • Wt.-2 lbs. 12 oz.

Circa
1200



Items displaying this icon can be sharpened for additional charge.

TEMPLAR ROBE

Worn as both a robe and tunic A red cross is fully embroidered onto the 100% white cotton body. Dry clean only. Order S/M or L/XL. #100868...\$60



LATE NORMAN HELM

Moveable nose guard, aged 18 gauge steel, adjustable liner and chin strap. Free stand included. #300370...\$190



PERIOD TIGHTS

These rugged tights will complete just about any period outfit. Made from a soft stretchable 100% cotton, these tights have an elastic waistband and boot stirrups allowing for a comfortable, all-day fit. Colors available in Brown, black or gray. S, M, L, or XL. #100934...\$28



TEMPLAR EFFIGY BOX



As if lifted from an ancient abbey, comes this beautiful representation of a medieval Templar Knight's coffin. The rich detail on this piece coupled with the heavy stone appearance, makes this the perfect box for any keepsake. Resin. 8¹/₂" x 3" x 4". #801680...\$24

TEMPLAR'S CHALICE

This stunning chalice brings back an age when the Knights Templar were the most powerful Order in the western world. Hand made in England of fine drinkable pewter, this goblet is marked with the Templar cross and is sure to be an elegant addition to any table setting. 5¹/₂" tall. Can be used for drinking. #801890...\$90



SWORD OF ROVEN

CIRCA
1400

The large sword was quite a popular weapon and the ricasso allowed the sword to be gripped past the guard, thus shortening the sword. This makes a thrust more solid since the blade is held securely at two separate points. High carbon steel blade, tempered to a tough spring. Grip is ridged wood, wrapped with leather, and the pommel and guard are steel. Comes with leather scabbard. Made by **Windlass Steelcrafts®**. #500794...\$245 ✂ (\$5 add. s/h)

Overall-48" • Blade-38" long, 1 1/8" wide, 3/16" thick • Wt-3 lbs.



Exclusive



Reverse

CRUSADER COIN PENDANT

This is a replica of a silver Denaro minted from the time of Conrad III, King of Italy (1127-1152). This rare crusader coin has been recast and placed into a sterling silver setting with an 18" silver chain, making it a stunning pendant. The necklace is presented in a beautiful red box, with a silver cross on the lid. Comes with a Certificate of Authenticity. Measures 1 1/4" across. #888001...\$30



CRUSADER FLAG

The red cross of the Crusades is accented by the gold cross of Jerusalem. Double sided, indoor/outdoor nylon. 3' x 5' with metal grommets. #801742...\$12

TEUTONIC KNIGHT ENSEMBLE

The German Order of the Teutonic Knights was formed at the end of the 12th century and played an important part in the defense of Acre during the Third Crusade.

Teutonic Tunic-Rich heavy natural cotton sleeveless tunic has the black cross of the order sewn to the front and has a linen lining to the interior. Dry

clean only. Choose S/M or L/XL. #100870...\$65

Teutonic Cape-This long matching hooded cape has the Teutonic black cross sewn over the left shoulder. Heavy cotton with corded tie. One size. dry clean only. #100872...\$90



CALL TOLL-FREE 1-800-883-8838

NAUMBURG SWORD

This rare pommel (type N) exists only on a handful of swords. This sword is taken from a figure of Wilhelm Von Camburg at Naumburg Cathedral and is a must-have medieval sword for any collection. Steel parts, leather wood wrapped grip and tempered high carbon blade come together to make for a fine, nicely proportioned sword. Comes with leather scabbard. Made by *Windlass Steelcrafts*®. #500996...\$210 ✂

Overall-38" • Blade-32" long, 2 1/8" wide, 3/16" thick • Wt.-2 lbs. 12 oz

CIRCA
1200



(A)



(B)

(C)

(D)



TUNICS & CAPES

(A) Crusader's Tunic-Thick white cotton with a full red cross embroidered on the front. Comes complete with corded belt. Dry clean only. Choose S/M or L/XL. Tunic shown with sword and scabbard (not included). #100582...\$65

(B) Crusader's Cape-This long hooded matching cape has a red cross embroidered on the left shoulder. Heavy cotton with corded tie. One size. Dry clean only. #100584...\$95

(C) Hospitaller Tunic-Worn by the Hospitaller Order, this dark brown heavy cotton long sleeved hooded tunic has a white cross embroidered on the front and ships with a corded rope belt. Comes complete with strips of aged chain mail attached in front and back to give the illusion of a full mail skirt being worn underneath. Dry clean only. Choose S/M or L/XL #100588...\$180

(D) Hospitaller Cape-This matching hooded cape (for C above) is a heavy cotton with a fully embroidered white cross on the left shoulder. Dry clean only. One size. #100590...\$95

Swords, Scabbards and Mail not included. See pg. 9 for our full line of Chain Mail & Coifs.



TEMPLAR SEAL BOX

The royal copper seal of the Knights Templar adorns the lid of this beautiful jewelry box. Made from a hard resin, it has been given the look of ancient stone. Measures 4" x 3 1/4". #801676...\$12



FLAG OF ENGLAND

This heroic flag was flown in some of the most decisive battles in English history. 3' x 5' indoor/outdoor nylon with grommets. Double sided. #801442...\$12

FALCHION

CIRCA 1250-1300



The single-edged falchion was favored by a great many knights and men at arms. The wide cutting blade was quite effective against mail. Although the falchion was intended primarily to be a cutting weapon, the development of the point was not ignored. This example has a very strong point that would penetrate mail with a hard thrust. A well-designed fighting weapon. Made by **Windlass Steelcrafts®**. The blade is tempered high carbon steel, the guard and pommel are both steel, and the grip is wood, covered with leather. Complete with a leather scabbard. #500204...\$185 ✈

Overall-34" • Blade-28" long, 1¼" wide, ⅜" thick • Wt. 3 lbs.

BATTLE AXES

Made by **Windlass Steelcrafts®**.

(A)

CIRCA
1500

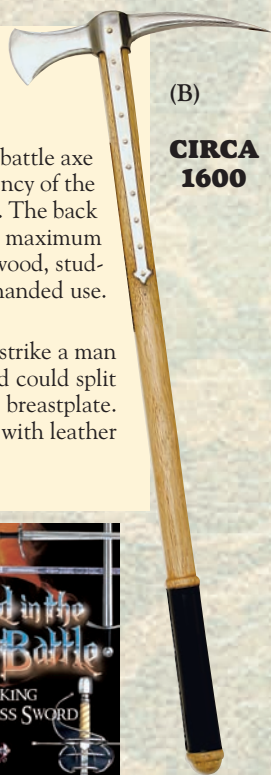
(A) 16th Century Italian Battle Axe-By the 16th century the battle axe became a highly decorated weapon, without affecting the efficiency of the weapon. This axe has a strong hardened steel blade with cutouts. The back spike is gracefully curved but has the proper angle to deliver the maximum force when the spike is used. Butt cap is steel. The shaft is hardwood, studded with brass tacks. Overall length 28", a great length for one handed use. #600059...\$130

(B) Late War Axe-The shaft is long to make it possible to easily strike a man on horseback or on the ground. The small wedge shaped axehead could split armor and the long deadly spike could pierce either a helmet or a breastplate. An interesting weapon to add to your collection. Long wood shaft with leather grip. #600644...Reg. \$110...Closeout \$90

Overall-28½" • Head 2¾" x 10" • Wt.-2 lbs

(B)

CIRCA
1600



FREE DVD Offer

When you purchase any of the Windlass Steelcrafts swords or daggers from our catalog, you will receive our exciting "Forged in the Heat of Battle" DVD absolutely free. This professional 13 minute film shows a brief history of the sword, the step-by-step forging and manufacturing process which goes into the Windlass blades, plus an expert cutting demonstration. A truly entertaining presentation, which will allow you to see firsthand the overall strength and ability which every one of our swords possess. While Supplies Last



INFANTRY GAMBESON

This heavy-duty gambeson was worn by knights and men-at-arms alike. The heavy quilted 100% cotton body makes it a great addition over a shirt of mail. The lacing up the one side, along the torso and also the neck, gives this garment a fitted look, while the high collar adds the needed extra protection. Dry clean. Choose black or burgundy. Order S/M or L/XL. #100704...\$55

Shown with the Locksley Gambeson - available on pg 12, Mail Gauntlets on pg. 7.



SWORD OF CORTENUOVA

The long struggle between the German emperors of the Holy Roman Empire and the Italian city states dominated much of the later Middle Ages and the Battle of Cortenuova (where the Germans routed the Italian Lombard League) was one of its largest battles. We have chosen a sword as one that could have been used by either side in that great battle. Brass parts and a leather wrapped wood grip complete this striking one-handed cutting sword. Scabbard included. Made by *Windlass Steelcrafts*®. #501096...\$265 ✈

Overall 38 3/4" • Blade-32" long, 2 1/2" wide, 3/16" thick • Wt.-3 lbs.

**Circa
1237**



MEDIEVAL DAGGER

**Circa
1150**

This type of dagger was used across Europe and the Holyland and would be at home on the belt of a crusader. Its simple design is ideal for use with a mail mitt because the opposing curves of the antiqued bronze pommel and guard lock the hand into place nicely. The wood grip is wrapped in leather cord for a good hold while the high carbon well tempered blade comes to a strong point. Made by *Windlass Steelcrafts*®. Includes scabbard. #402536...\$95 ✈

Overall-17" • Blade-12" long, 1 1/4" wide, 3/16" thick • Wt.-1 lb.

**Circa
1100**



BATTLE AXE

The axe is almost as old an implement as the club. Metal axe heads were among the first handiworks created during the Copper Age. With all this history it is easy to see why a Medieval warrior would choose a good axe for battle.

This axe has a back spike to add to its effectiveness as a weapon of war. The steel head is pinned to a hardwood shaft that is curved at the end on this one hand axe. Made by *Windlass Steelcrafts*®. #600754...\$110

Overall-23 1/4" • Head-6 1/4" x 9 1/2" wide, 3/16" thick • Wt.-1 lb. 8 oz.



KNIGHTLY BELTS

These two belts are the perfect choice for almost any medieval knightly outfit. The extra long 80" heavy grade leather is gorgeously accented with antiqued brass roses and heavy duty buckle. \$95 each

Black-#200676 • Brown-#200678

WELSH DRAGON FLAG

The royal standard of Wales. Indoor/outdoor nylon. 3' x 5' with metal grommets. Flag is double sided. #801448...\$12



MEDIEVAL DOUBLE WRAP BELT

From the early B.C. Celts to well past the Renaissance, warriors figured out that a double wrap belt was a more comfortable way to carry a sword. When the extra length of belt wraps around a body the second time, both hips then support the weight of the sword. Includes a frog hanger that will fit all scabbards. Made of beautiful top grade leather. Choose **brown** with brass or **black** with nickel silver studs and buckle. 1 3/4" wide. Specify S, M, L or XL. #200454...\$52



**Available
in Brown
or Black**

English Two-Hand Sword

**Circa
1450**

It must have been a fearsome sight having this huge sword coming at you across the battlefield. This particular sword is a copy of number IV-1787 in the Royal Armouries in England. Though big, it is beautifully balanced for two handed use, allowing for sweeping cuts, and it must have swept away all in its path. The long grip is wood covered in leather and the parts are steel, making for a truly impressive sword. Made by **Windlass Steelcrafts®**. Includes scabbard. #501060...\$285 ✂

Overall-57½" • Blade-44" long, 2¼" wide, ⅜" thick • Wt.-4 lbs. 2 oz.

English War Hammer

With the increasing sturdiness of plate armor, the sword became less and less effective against a fully armored knight. The war hammer quickly evolved and became one of the premier weapons. Light, fast and deadly. Dates from about 1430 AD. Made by **Windlass Steelcrafts®**. #600054...\$90

Overall-25¼" • Wt.-1¾ lbs. • Width-head to spike-6½"

Maces

(A)

(B)

These two heavy maces, which evolved from man's oldest weapon, the club, could make short work of armor. With a few full sound blows the best of plate would be so damaged that the wearer's movement would be greatly impaired, and that led to a quick defeat. Both of these handsome examples have 8 flanges and are made from steel that has been blackened to a deep luster. The bottoms of the shafts are wrapped in black leather for an improved grip. Made by **Windlass Steelcrafts®**. \$95 Each

(A) Italian-#600624 • (B) German-#600626

Overall-24" • Wt.-4 lbs.

Euro-Spearhead

One of the world's most ancient weapons, the spear was a dominant presence on the field of battle for an amazingly long period of time. This particular blade form was put to use through a wide range of European history by a wide range of cultures, from Ancient Celts and Greeks, into the Renaissance. The blade is tempered steel and the socket fits a 1¼" round pole (not included). Made by **Windlass Steelcrafts®**. #600766...\$45

Overall-16" • Wt.-1 lb. 2 oz.

Blade-9½" long, 2" wide, ⅜" thick

Use with our Butt Caps on pg. 58

Studded Leather Belt



2" wide belt top grain leather, hand made, and heavily studded. Can be worn to secure a baldric or to carry a sword. Choose between black belt with nickel plated, brass studs and buckles, or brown belt, with solid brass studs and buckles. Color varies slightly. Please specify S(28"-35"), M(33"-40"), L(38"-45") or XL(43"-50"). All sizes approx. #200178...\$45

Great Bascinet

By the 3rd quarter of the 14th Century this type of helm, which was called "pig-faced" by the English or "Hounds-Skull" by the Germans, had emerged as the most popular form and could be found on the battle-fields all over Europe. Our offering is from 18 gauge steel with an antiqued finish. Approx. 26" cir. with an adjustable leather liner with chin strap. Wt.-4 lbs. 6 oz. #300380...Reg. \$225...Catalog Special \$199





CIRCA
1350

Brass Hilted Rondel

The Rondel Dagger was around for a long period of time and took many forms. The grip is long enough to be grasped with a mail mitten or gauntlets, and the round guard and butt lock it securely in the hand. Many Rondels had plain dagger blades, but this compact type has a thick, strong-fullered blade that ends with a reinforced tip for punching through mail and finding the small, unprotected areas of armor. Made by *Windlass Steelcrafts*®. Scabbard included.

#401908...\$110 ✂

Overall-18" • Blade-12½" long, 1¼" wide, ¼" thick • Wt-1 lb. 2 oz.

Leather Brigandine

Even with a gambeson and a mail shirt, a fighter was not as well protected as a warrior with plate armor. The brigandine filled this gap very well. This suede leather garment has small steel plates riveted between the outer shell and the lining. Weighing only 6 lbs., it is very flexible and does not restrict movement. Commonly worn over a gambeson and mail shirt. Our version has three buckles on each side for great versatility in fit. Approx. 32" long. Choose black or brown leather shell. S/M (fits chest size to 38") or L/XL (fits chest size to 48"). #100402...\$170



Knight's Chain

"Chains" or necklaces

were given and worn to designate a knight or a lord of high office. Our offering is of solid nickel silver plates joined together with steel rings. Dress up your armor or lordly outfit. Chain is approx. 36" and weighs 1 lb. #200668...\$65



Calf Boot

Attractive leather short boot with three buckle design. Can be folded over to ankle length or left up for a rare mid-calf look. Although not specific to any time period, they easily could have seen use during the Renaissance. Worn by both men and women. Leather sole. Men's whole sizes only 6-13. #200492...\$60



KING EDWARD III FLAG

The royal standard of England beginning in the 14th century. Indoor/outdoor nylon. 3' x 5' with metal grommets. Flag is double sided. #801428...\$12



Jousting Knight

Hand painted figure in silver and gold tones shows regal knight in brave pose. The metalized look is perfect for this steely warrior. Cold cast resin. Approx. 8½" tall. #801230...\$34

15th Century Longsword



**CIRCA
1450**

The longsword, often called a hand-and-half, saw a great deal of service as a weapon of war, but was also employed a great deal as a civilian weapon of self-defense. A good serviceable point allowed it to be used for thrusting, and a medium weight allowed it to be used easily and carried with equal ease. But when needed, it could be gripped with both hands for a very powerful cut. Pommel and guard are steel. Grip is wood wrapped with leather and wire.

A beautiful and very functional sword. Made by **Windlass Steelcrafts®**. Includes scabbard. **#500800...\$245** (\$5 addl. s/h)

Overall-45½" • Blade-36½" long, 1¼" wide, ⅜" thick • Wt.-3 lbs. 4 oz.

Black Leather Axe Holder & Frogs

Designed to fit most any belt, our frogs for axe, broadsword and dagger are hand crafted of durable, full grain leather replete with nickel plated, metal studs. **\$15 Each**

(A) Axe Holder-boasts an oversized nickel plated ring for cradling the head of even the heaviest axe. **#200028**

(B) Dagger Frog-a jaunty, but secure carrier for dagger or dirk. **#200276**

(C) Broadsword Frog-with its ingenious dual strap design, this frog will support both broadsword and scabbard. **#200084**



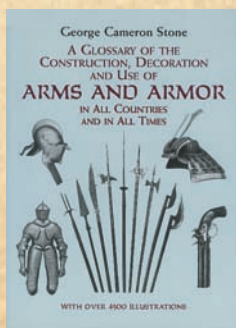
(A)



(B)



(C)



Stone's Classic Work on Arms & Armor

Widely considered to be the definitive work on the subject of arms & armor. Long out of print, we are proud to offer this indispensable resource. Originally published in 1934, it has lost none of its impact. Over 4,500 photographs and drawings. 704 pages. 8½" x 11". Softcover. **#800374...\$40**

Guarantee

We guarantee any product you purchase from MRL. Please inspect your purchase upon arrival. If an item does not meet with your approval, just return it to us within **30 days of the ship date** for a full refund or exchange, whichever you prefer. Follow the instructions on back of packing slip. If you have a problem with merchandise after 30 days, we will repair or replace due to manufacturer's defect.



**CIRCA
1300**

Bar Mace

The remains of a mace of this type were found in the River Thames, but they were in use all across Europe. Little finesse was needed for this brutal mace, and a warrior strong enough to wield it could crush helms and break swords with the heavy blows it could deliver. Made from four bars of steel with a wood and leather grip and a large steel pommel to help balance it, this is indeed an awesome weapon. Made by **Windlass Steelcrafts®**. **#600652...\$130** (\$5 addl s/h) Overall-28½" • Blade-20" x 2" x 3/16" • Wt.-4 lbs. 8 oz.



Cruciform Sword



More than just a weapon, this sword served the honor-bound knight as a symbol of Fealty and Piety. The wheel pommel and straight guard combine with the blade to form a cross on which he would swear an oath or pray before battle. This sword extends the religious theme further with an engraved shield and cross on the pommel. The parts are steel. The grip is wood wrapped in leather and the blade is fully tempered high carbon steel on this well-balanced one-hand classic sword. Made by *Windlass Steelcrafts*®. Includes scabbard. #501104...\$235 ✂

Overall-39" • Blade-33" long, 1 7/8" wide, 3/16" thick • Wt.-2 lbs. 12 oz.

**CIRCA
1350**

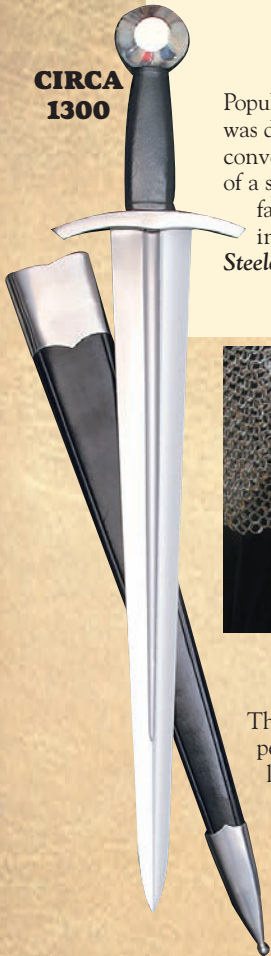


Coustille

**CIRCA
1300**

Popular with knights as well as the rank and file, the Coustille was developed in an effort to create an all-in-one weapon – convenient to carry like a dagger, but with the cutting power of a short sword. The well-tempered blade is light and very fast. Steel pommel and guard with a wood grip covered in leather. Includes scabbard. Made by *Windlass Steelcrafts*®. #501014...\$135 ✂

Overall-22" • Wt.-1 lbs. 6 oz.
Blade-16 3/4" long, 2" wide, 3/16" thick



Steel Vambraces

These steel lower arm guards will go with a large range of period outfits and weapons. They are nicely formed and lined with leather. Straps on the inner arm adjust to fit just about anyone. 9 1/4" x 6 1/4". Wt.-1 lb. 10 oz. #300348...\$80/Pair

**CALL TOLL-FREE
1-800-883-8838**



Black Medieval Boots

Finding accurate footwear has been one of the more difficult problems to face the medieval enthusiast or reenactor. These are excellent short boots, made of a premium grade leather. Sizes 8 – 13; male whole sizes. #200038...\$120

Gambeson

It was always possible to drive the point of a weapon through the rings of a mail shirt or shear it with a good cut. A thick, padded garment worn under a mail shirt greatly reduced the risk of these types of injuries. Our gambeson is of a type worn from the early middle ages well on through the Renaissance. Choose M, L or XL. Hangs approx. 32" and weighs 1 1/2 lbs. Black only. Poly cotton. Hand wash. #100278...\$95



THE TUDORS

Inspired by the Showtime Original Series

KING HENRY CEREMONIAL SWORD

This royal sword was designed specifically for the show by Museum Replicas Limited™. The highly detailed parts are gold plated, while the grip is wood covered with leather and twisted wire. Made by *Windlass Steelcrafts*®. Includes scabbard. #882002...\$295 ✂

Overall-43" • Blade-36" long, 2" wide, 3/16" thick • Wt.-3 lbs. 4 oz.



(A)



(B)

(D)



(C)

KING HENRY ENSEMBLE

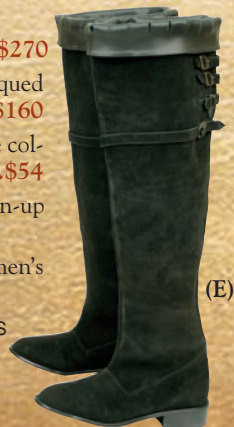
(A) Red Royal Cape-Tudor style, faux fur trimmed cape. One size. #882009...\$270

(B) Doublet-a stunning padded black cotton velvet doublet, accented with antiqued silver trim and jeweled buttons. Dry clean only. Black S, M, L & XL. #882007...\$160

(C) Cross Shirt-a generous period shirt with an embroidered cross pattern on the collar. Hook & eye closure on collar. 100% cotton. Natural S/M or L/XL. #882006...\$54

(D) Pants-matching black-on-black brocade panned pants with open slashes. Button-up front. Black S/M or L/XL. #882008...\$95

(E) Suede Boots-tall, all suede boot with slash leather uppers. 25 1/2" tall. Whole men's sizes 9 through 13. #882010...\$239



(E)



SHOWTIME is a registered trademark of Showtime Networks, Inc., a CBS Company. © 2008 Showtime Networks, Inc. All Rights Reserved.

"The Tudors" © 2008 TM Productions Limited/PA Tudors, Inc.

An Ireland-Canada Co-Production. All Rights Reserved.



QUEEN KATHERINE GOWN

The deep rich blue of this stunning gown is royally accented with gold hand-stitching and over two dozen artificial white pearls. The cuffs of the sleeves are trimmed in a faux fur, while the inner sleeves are made of a delicate sheer blue netting. Dry clean only. S, M, L or XL #882017...\$195



ANNE BOLEYN GOWN

This gorgeous two-piece gown is sure to turn heads with its golden champagne floral fabrics and sleeves lined in a deep burgundy. Artificial pearls and two jeweled brooches accent the front, while the back laces up for comfort. Dry clean only. S, M, L or XL. #882019...\$270



TUDOR CHAINS OF OFFICE

Also known as a livery collar, these chains were worn to denote attachment to a great person by friends, servants, and political supporters. This reproduction of the Collar of Esses has the Tudor rose hanging from dual portcullis. Fully-sculpted metal links and measures a full 36" circumference with a 3 1/2" rose. **\$85 each**

Antique silver finish-#200960
Polished Brass-#200958



KING HENRY JOUSTING HELMET

A faithful reproduction of the Maximillian styled helm used in The Tudor's Series. The crest and rivets have been plated in polished brass. Moving visor, opening side cheek plates and an attractive Tudors display stand. 18 gauge steel construction. #882003...\$345



KING HENRY COURTLY ENSEMBLE



(A)

(A) Brocade Courtly Cape-Tudor style, black faux fur trimmed cape. Rich gold, black and burgundy brocade with rayon lining. Dry clean only. One size. #882015...\$195

(B) Green Doublet-a padded courtly doublet lavishly accented with a gold brocade. Dry clean only. Green S, M, L & XL. #882013...\$145

(C) Pants-period black knee britches with a royal satin-like finish. Button-up front and lace-up back with laced calves. Rayon. S/M or L/XL. #882014...\$48

(D) White Shirt-bright white period shirt with a black edged Tudor collar. Hook & eye closure on collar. 100% cotton White S/M or L/XL #882012...\$42



(B)

(C)



(D)

SHOWTIME®

TUDORS LETTER OPENER

King Henry's royal ceremonial sword and jousting helm have been accurately reproduced in a beautiful miniature letter opener and stand for any king in your household. 8½" inches tall. #882001...\$48



Reverse



ROYAL SEAL PAPERWEIGHT

Copied from the actual on-screen seals used for the TV series. Made of metal, plated in bronze and antiqued. Faces are the seals of King Henry. 4½" diameter. #882004...\$48



(E)

(E) Castle-top Boots-knee high full leather boot with a castle-top dagged edge. Black Whole men's sizes 9 through 13. 17½" tall. #882016...\$155

Cantebury Gown

No matter what the season, the rich green and gold leafy pattern of this full courtly dress will make people think spring is in the air! The bold Renaissance cut is complimented by the puffed shoulders, while the sleeves give the illusion that the dress is being worn with a full chemise underneath. Actually, a perfect light-weight gown for those warm faires! 100% polyester. Dry clean only. S, M, L, or XL. #100982...\$124



Crown of Pearls Necklace & Earrings

Renaissance women of stature loved to wear pearls. This necklace combines antique artificial pearls with an exquisite crown covered in faux diamonds. A simple set of pearl earrings make this a truly stunning set. Measures 16". #201000...\$35



Black Magic

Very elegant with many period outfits. Dress these up or down; the ornate black beads on black satin still make a lovely statement. Leather soles. Whole sizes 6-11. #100030...\$30



Countess Dress

This full-length, black crushed cotton velvet gown has the bell-cut sleeves and square-cut neckline trimmed with a silver floral pattern, encrusted with dark jewels. The open cut front is lined with a dark silver lame! Easy lace-up back ensures a stunning, shapely fit. Dry clean only. S, M, L, or XL. #100670...\$120



Decade Ring Cross

Worn in secrecy by many Catholics during the Tudor period, this ring allowed the faithful to say the Rosary using the cross and ten silver balls. A perfect pewter reproduction, which hangs on a multiple black and beaded 20" cords, with rear clasp. 6 faux diamonds. 1 3/4" overall height. Ring size 12. Made in England. #200996...\$39



Boudoir Letter Opener

A lovely way to open that letter from your secret admirer. This stunning piece has been nickel plated then richly adorned with multiple layers of fine filigree and artificial pearls. Measures 8" overall. #801934...\$30



(A)

Hair & Bodice Daggers

(A) This unique dagger is fitted to an oval barrette to allow you to stylishly carry a knife at the back or side of your head! The barrette and scabbard are gold plated as are the exposed parts of the dagger. The grip is hardwood, carved much like a Scottish Dirk on this pretty little piece. Made by Windlass Steelcrafts®. #801298...\$65

(B) Bodice/Boot Dagger-the same pretty little dagger without the barrette to allow you to carry it in a bodice or the top of a boot. #402260...\$60

Overall-7½" • Blade-4" long, ⅝" wide, ⅜" thick • Wt.-4 oz.



(B)

Royal Court Doublet

Manufactured of a heavy brocade fabric and sporting a row of antiqued buttons, every effort has been made to ensure the finest care in the alignment of the fabrics to give this jacket a truly royal appearance. Dry clean only. Order S, M, L or XL #100874...\$120



(C)

(D)

Pendant & Celtic Knot Bracelet

(C) **Lady of the Lake Pendant**-All of the splendor of the Arthurian tale comes alive in this stunning pewter necklace, which measures a full 2" in length. 24" clasped leatherette black cord. #200698...\$12

(D) **Celtic Knot Bracelet**-The epitome of celtic knot work design lives in the magnificent workmanship of this pewter bracelet. Perfect for a man or woman, this elegant accent piece is antiqued, giving it the look of an age long gone. 1¼" inch wide and measures 6¼" around. Slightly adjustable. #200692...\$14



Period Cotton Shirt

Cocoa

This renaissance shirt features a stand up collar and lace up front. The sleeves are wide and roomy and end with an elastic gather. The tucks on the back yoke, sleeve tops and front yoke add to its attractiveness. Choice of **blue** and **cocoa**. 100% cotton. S, M, L or XL. Dry clean only. #100156...\$36 XXL-\$41

Swordsman's Shirt

Made from 100% cotton and easy to care for. **Black, white or purple**. Colors may vary slightly. Please specify M, L or XL. Poly cotton, hand wash. #100236...\$39 XXL-\$44





Berengaria Gown

Just like the medieval princess from which this dress draws its name, you will feel like you are at the royal court wearing this lovely gown. Made of a rich burgundy cotton velvet, this full gown's sleeves and front are dressed with rich gold material. Both the sleeves and waistline are accented with a trim of hand-sewn beadwork, making this one of the most beautiful period gowns we have ever offered. Dry clean only. Order S, M, L or XL #100904...\$129

Chemise

Our new delicate lace trimmed chemise in white is a very feminine undergarment that's light and airy. The sleeve edges and neckline have a small white lace trim. The bottom of the chemise is adorned with a white flower trim that adds to the charm. This can be worn under many of our gowns or surcoats. Hand wash cold. S/M or L/XL. #100302...\$45
XXL...\$50



Celtic Locket

Perfect for discreetly carrying a keepsake from your love. This gorgeous, sterling silver locket has pierced Celtic knotwork front and back. Opens up to conceal your small treasure. Purple stone in center. Includes 18" sterling silver chain. 1 1/4" tall, 7/8" wide, 1/2" deep. #200194...\$40

Bodice / Boot Dagger

This pretty little dagger is just right for m'lady's bodice or the top of a boot. Brass parts are gold plated while the grip is polished camel bone. This handy little piece will take a razor edge. Scabbard with gold plated throat and tip included. Made by Windlass Steelcrafts®. #401792...\$85 ✂

Overall 9 1/2"
Blade 5 1/4" x 3/8" x 3/16"
Wt. 3 oz.



CIRCA
1500

Scarlet Dream

This elegant gown is made of a heavy red cotton velvet, the dress has full bell sleeves and a generous full skirt. Matching handmade frogs compliment the lace-up front. Back laces also. Sizes S, M, L or XL. Dry clean only. #100608...\$90 XXL...\$95

Celtic Hand Mirror

M'lady will be surrounded by beauty with this elegant hand mirror adorned with celtic knotwork. This resin cast mirror has been metalized to give it the look and feel of antique bronze and contains a real glass mirror. Measures 9 1/2" x 5 1/2". #801580...\$22





Florentine Gown

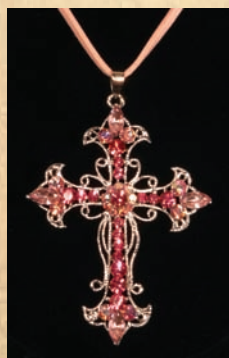


This is by far one of the most beautiful Renaissance gowns we have ever offered. The rich elegant fabrics of both the body and front panels sparkle, while the robust, full-length skirt ensures that this dress is suitable for any Tudor affair. Multiple golden trims line the dress and heavy lace finishes off the sleeves. Dry clean only. Order Blue or Burgundy. Available in S, M, L or XL. 100% polyester. #100984...\$195



Coming Soon

Period Farthingale which can be worn under any Renaissance gown.



Fleur-de-Lis Cross

A great piece of jewelry for almost any ensemble. Deep pink Austrian crystals make this dazzling cross a true work of beauty. Measures 3" x 2 1/4" and comes with a 16" pink leather cord with adjustable clasp. #200872...\$18



Princess Tiara

With over 100 stunning artificial diamonds, this beautiful tiara is certain to complete any royal ensemble. Complete with side combs for a secure fit. Choose silver or gold. #200950...\$39

Queen's Topaz Necklace & Earrings

A full rich waterfall of artificial topaz and diamonds lace this ravishing necklace, all within an antique gold setting. A small set of beautifully matched earrings make this a stunning combination. 11 1/2" long. #200998...\$59



Fleur-de-Lis Dress

The back of this dress laces up and has a hidden modesty panel, which leaves breathing room after a little too much feasting. We have chosen the Celtic Chemise for this dress (see pg 26), however, this dress would still look wonderful paired with any of our chemises. Burgundy or midnight blue with gold accents. S/M or L/XL. 100% poly cotton. Dry clean. #100390...\$59 XXL-\$64

Lady Jane Dress

This elegant gown could easily be seen traversing the royal court of King Henry VIII. The rich burgundy cotton velvet body gives a form-fitted appearance and is exquisitely accented with a hand beaded gold trim. The sleeves have a sheer soft netting and are finished with matching burgundy bows. Dry clean only. Order S, M, L or XL. #100898...\$120



Gothic Net Dress

This rayon gown is covered in a rich black lace and is accented down the front with a whimsical burgundy brocade. A cotton velvet bust line, lacing up the front and tattered sequined sleeves finish off this amazing garment. Zippered back. Size S, M L or XL. Dry clean. #100566...\$95



Lady Jane Shoe

This will be one of the most versatile and comfortable pair of shoes in your ensemble. Solid silk construction, rubber soles. Adjustable straps with a nickel plated buckle. Black only. Women's whole sizes 5-10. #100882...\$15



Queen's Cross

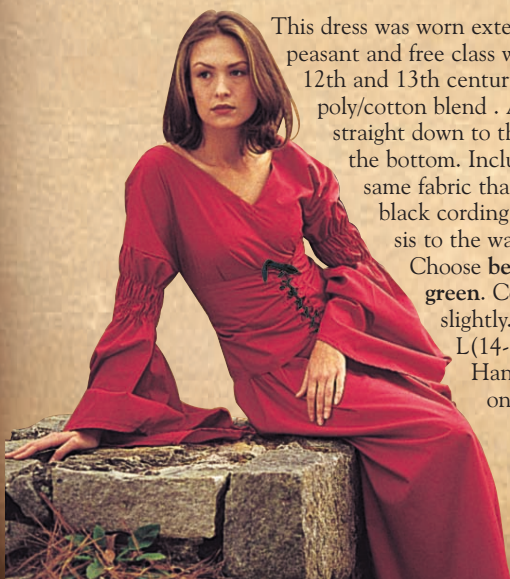
A magnificent addition to your royal ensemble. This stunning cross measures a full 4 1/2" x 3 1/4" and is encrusted with 60 aquamarine Austrian crystals, which have a multi-color sparkle. Highly detailed filigree work and a 24" linked chain with clasp completes the piece. #200870...\$25



Pleasant Peasant

This dress was worn extensively by both the peasant and free class women during the 12th and 13th centuries. It's made from a poly/cotton blend. Although the cut is straight down to the waist, it flares at the bottom. Includes a girdle of the same fabric that is tightened with black cording to provide emphasis to the waist (no lace).

Choose **berry** or **meadow green**. Colors may vary slightly. S(6-8), M(10-12), L(14-16) or XL(18-20). Hand wash or dry clean only. #100056...\$59



Fleur-de-Lis Paperweight

This lovely clear resin paperweight has been lavishly decorated with layers of filigree metal, topped off with a beautiful fleur-de-lis. Measures 3" diameter and 1" high. #801928...\$25



CALL TOLL-FREE 1-800-883-8838



Fair Maiden Dress



This colorful 16th century styled dress features coordinating front trim and reinforced boning in the front bodice for extra strong tight lacing. We have paired this piece with the Celtic Chemise (sold separately), however it will look lovely with any of our other chemises. Three colors to choose from: **blue, green and red.** 100% cotton. Sizes S/M or L/XL. Dry clean only. **#100510...\$65** XXL-\$69



Celtic Chemise

The chemise was worn under all medieval ladies' clothing. It was often slept in as well. Our well-made chemise has very long sleeves and ties at the shoulders. A very special look for your favorite gown. S/M or L/XL. Hand wash. **#100508...\$49** XXL-\$54

Gypsy Princess

This lavish ensemble is sure to get you noticed at any event. The main ensemble consists of our full Gypsy skirt, a matching pair of pants and a short open vest. Both the skirt & pants have elastic waists for easy fit. Polyester. Order S/M or L/XL. **#100890...\$125**

Shown with our Peasant Girl Shirt-White only. S, M, L, or XL. **#100784...\$39** XXL...\$44



Swordswoman's Shirt

Loose, flowing sleeves allow for excellent freedom of movement, while the long, tapered cuffs are proportioned for a woman's wrist. The shirt is long enough to be tucked in or worn belted. The cuffs are laced to assure a close fit. Made of a poly/cotton blend. Choice of **white or black.** Available in S (8-12) and M (14-18). Hand wash. **#100432...\$39** XXL-\$44



Celtic Cross

Hand made from .999 fine silver (*that's pure silver*) with a hammered finish. No two alike. Includes the traditional, mystical circle around the center of the cross. Worn by Celts from 500 A.D. on, as indicated by drawings and manuscript illuminations, personal jewelry unearthed by archaeologists, and stone monuments still standing. 1 1/8" x 7/8". Comes with 18" long, silver box chain necklace. **#200482...\$42**



Renaissance Overdress

A truly wonderful, lightweight overdress, which can be worn with any chemise. This long period dress can be worn with or without the detachable sleeves, giving you a multitude of styling options. The top lace-up bodice has been re-enforced and a coordinating gold trim accents the front and sleeves. An absolute stunning piece, when worn with our royal gold Celtic chemise. Choose from: blue, red or green. 100% Rayon. Dry clean only. Sizes S/M or L/XL. #100956...\$65 XXL-\$70

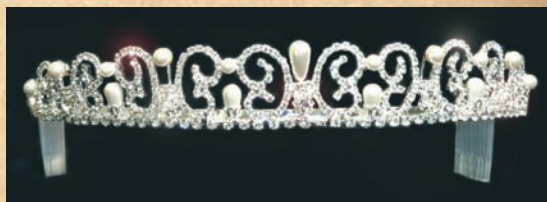


Royal Gold Chemise

As an alternative to our standard white chemise, this beautiful golden chemise will totally enhance and change the look of any dress worn with it. The extra long sleeves pulled up and are tied at the shoulders, so a custom fit is easily acquired. The gold-on-gold floral pattern makes this the perfect addition to any period ensemble. 100% rayon. Dry clean only. S/M or L/XL. #100944...\$79

Divit Toed Shoes

A must for any Renaissance wardrobe or perfect for an evening or special occasion. Embroidered design has beads on beautiful bronze satin material. Leather sole with satin lining. Whole sizes only 6-11. Shades may vary. #100422...\$30



Pearl Spráy Tiará

The elegance of artificial pearls and diamonds come together in this beautiful tiara perfect for the Renaissance Faire or any event. Complete with side combs for a secure fit. #200952...\$44



Celtic Jeweled Pendant

A stunning piece of sterling silver celtic knotwork, interlacing a circle embedded with artificial diamonds. This delicate 1" piece comes with an 18" silver snake chain with clasp for easy wearing. #200740...\$40

Velvet Long Cape

Hand made black cotton velvet with an exquisite satin lining (please specify purple, red or white) makes mantle and cape reversible for festive occasions. Sleek and stealthy, this hooded cape also has arm openings to give you two ways to wear it. 45 1/2" long from neck to hem. Hand crafted. One size fits most. Dry clean only. #100258...\$149



The Musketeers

(A)

**CIRCA
1590**

(A) Rapier-The basket of this rapier's hilt is ambidextrous and a very effective mix of both the cup-hilt and swept-hilt styles. The grip is wood wrapped with twisted wire and the parts of the hilt are plated with gleaming nickel silver. **#500784...\$265** ✂

Overall-46" • Blade-37½" long, 1" wide • Wt-2 lbs. 8 oz.

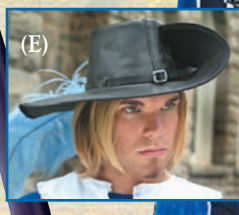
(B) Main Gauche-Carried at the back for a left hand draw, the main gauche was often brought into play with the rapier for a two-handed fighting style. The blade has cut-outs and notches to slow or disrupt an opponent's blade, while the hand was well-protected by the knuckle bow. **#401348...\$135** ✂

Overall-23" • Blade-17" long, 1½" wide • Wt-1 lbs. 12 oz.

(B)



(D)



(E)

(C)

(C) Tabbard-A rich blue cotton velvet lined with satin. The front and sides are emblazoned with the fully hand embroidered silver cross and fleur-de-lis of the Musketeers, while the edges are finished with a matching silver trim. Dry clean only. One size fits most. **#100516...\$110 XXL-\$115**

(D) Shirt-The perfect companion piece for the Musketeer ensemble. The lace collar and sleeves are designed to accent the above Tabbard, while still allowing you to combine it with a variety of additional outfits. Made of white cotton, this shirt will give you years of practical use. S/M or L/XL. **#100512...\$39 XXL-\$44**

(E) Leather Cavalier Hat-Made of fine black leather, the hat has a stylish band with buckle along with the famous up-turned side brim. (Plume not included). Black only. M or L. Please specify **right** or **left** side raised brim. **#200552...\$85**

(F) Musketeer Boots-The classic knee high version of the fold over boot made famous during the 17th century by the King of France's Musketeers. Slip-on, single buckle adjustment across the front. Black suede. Hard leather sole with 1" wood/rubber heel. Sizes 8-13. **#100182...\$175**

(F)

Deschaux Rapier

With its graceful, artistic lines, the rapier has always been a romantic symbol of the Renaissance. Many hilt forms were tried early on like this three ringed swept hilt. The grip is bone with a wire wrapping, making for a very secure grip. This is a light, fast, and deadly sword with a classical design. Made by *Windlass Steelcrafts*®. Includes scabbard. #500862...\$265

Overall 46" • Blade 39" long, 3/4" wide, 3/16" thick • Wt.-2½ lbs.



**CIRCA
1590**

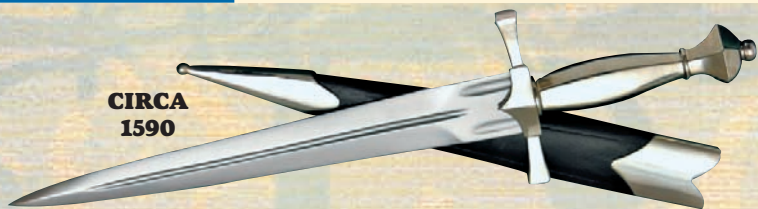


**Circa
1590**

Left Hand Dagger

The left hand dagger (or "Ring Hilt" Dagger) was employed in the art of rapier and dagger swordplay. It was often worn at the back tilting to the left for easy access. This offering matches nicely with our three ringed rapier. The parts are steel and the grip is bone wrapped in wire for a good grasp. Made by *Windlass Steelcrafts*®. Includes scabbard. #402528...\$125 ✈

Overall-12¼"
Blade-8" long,
1" wide,
3/16" thick
Wt.-1 lb



**CIRCA
1590**

Silver-Hilted Dagger

This dagger features a large, fully tempered high carbon steel blade with attractive fuller work married to a durable hilt. Guard, grip, and pommel are all made from solid nickel silver. Along with a black leather scabbard with nickel plated throat and tip. Made of high carbon steel by *Windlass Steelcrafts*®. #400326...\$120 ✈

Overall-14¾" • Blade-10" long, 1¼" wide, 3/16" thick • Wt.-1 lb.



**CIRCA
1400-1700**

All Steel Stiletto

Light, easy to carry and often worn like jewelry by both men and women. Stilettoes were used throughout the European Renaissance, and were common at the feast table. The triangular shaped blade is deeply fullered on all three sides and comes to a very keen point. The grip and pommel are turned in steel as is the typical short guard. Black leather scabbard with steel parts included. Made by *Windlass Steelcrafts*®. #401620...\$95

Overall-13¾" • Blade 8¾" long x ½" wide • Wt.-12 oz.

**CALL TOLL-FREE
1-800-883-8838**



Florentine Rapier & Dagger

The Italians were reportedly the first to form the school of fighting with a rapier and dagger and it is still called the "Florentine" style. Be that as it may, it was used by all European countries and thought to be the most difficult and fluid form of dueling. This is certainly a handsome set where the shells of the guards have been taken to the literal sense. The quillions are long for added protection and the entire hilt has been given a beautiful aged look. The blades are from well tempered high carbon steel. Well-balanced. Scabbards are included. Made by **Windlass Steelcrafts®**.

(A) Rapier...#501140...\$295

Overall 45" • Blade 35½" long, ⅜" wide, ⅜" thick • Wt.-2 lbs. 6 oz.

(B) Dagger...#402740...\$155 ✂

Overall 18½" • Blade 12½" long, 1" wide, ⅜" thick • Wt.-1 lb. 4 oz.



**CIRCA
1600**



Hunting Trousse

In the Middle Ages most of the nobility were devoted hunters. This large knife was used to dispatch the wounded animal, then dress out and carve the carcass. Sometimes the trosse was accompanied by a fork and a small knife for camp dining. Our trosse has a 12" long, 2" wide blade that will take and keep a razor edge. Both it and the small knife are made of high carbon steel, as is the fork. Furniture is steel, while the grip is polished buffalo horn. Made by **Windlass Steelcrafts®**. #401720...\$160 ✂
(Sharpening done on main blade only.)

Overall 17" • Blade 12" long, 2" wide, ⅜" thick • Wt.-1 lb. 8 oz.



Steel Shields



Made by **Windlass Steelcrafts®** of 18 gauge steel with leather grips. Minor assembly required. **\$90 Each**

(C) Buckler-the buckler could be hung from the sword scabbard when two hands were needed for a pike or staff weapon. So widespread was its use, that the exercise of sword and buckler became one of the most common sports of the Renaissance. Dia.-16". Wt.-3¼ lbs. #800248

(D) Domed-small round shield remained popular from the 13th to the 17th century. Many soldiers preferred this to the full-size shield to be able to move more quickly. Dia.-23⅜". Wt.-6 lbs. #800176

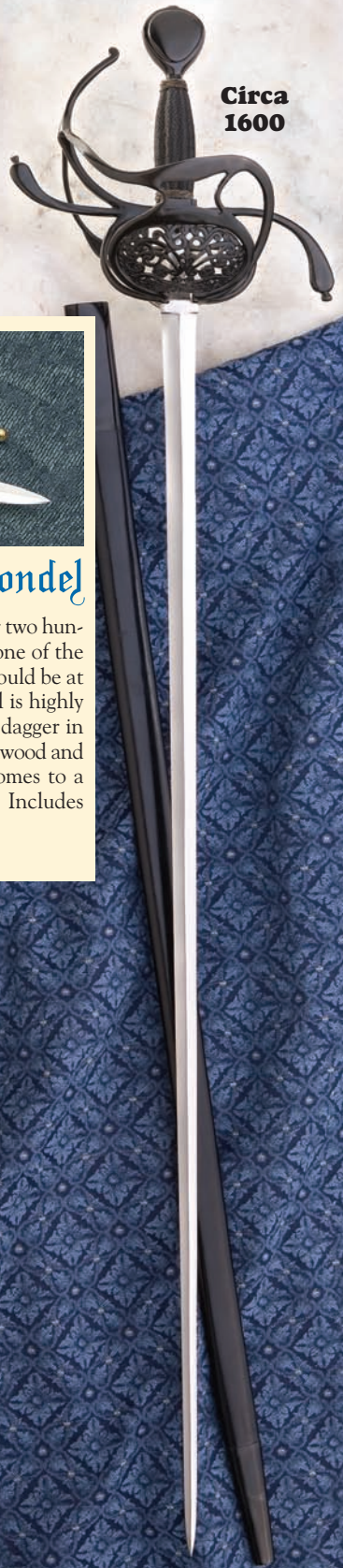
(\$10 addl. s/h per shield)

Grantham Rapier

This beautiful swept-hilt rapier has a blackened hilt and shell guard with an intricate floral design. The grip is wire over wood and the pommel is large enough to balance a blade that is capable of delivering a cut as well as a thrust. All together an attractive and effective rapier. Well-tempered high carbon steel blade. Made by **Windlass Steelcrafts®**. Includes scabbard. #500958...\$285 ✂



Overall 44" • Blade 36" long, 1" wide, 1/4" thick • Wt.-2 lbs. 6 oz.



Circa 1600



Early 16th Century Rondel

The rondel dagger was in widespread use for over two hundred years. This splendid example is probably one of the last designs of this form. This dashing dagger would be at home at the side of a noble. The brass pommel is highly decorative while the circular guard places the dagger in the rondel family. The grip is lovely polished hardwood and the long blade is lightly hollow ground and comes to a strong point. Made by **Windlass Steelcrafts®**. Includes scabbard. #402482...\$95 ✂



Circa 1520

Overall 17 1/2" • Blade 12" long, 1 1/8" wide, 3/16" thick • Wt.-12 oz.



(A)



(B)

Royal Brooches

Two beautiful brooches perfect for any court. Both have a pin back with locking clasp.

(A) **King's Crown**-2 1/2" x 2 1/4" and is encrusted with 70 artificial diamonds and two large faux pearls. #200988...\$24

(B) **Queen's Crown**-compliments (A) above. 2" x 1 1/4" and sports 25 artificial diamonds and a golden inner rim. #200990...\$14



St. George & the Dragon Statue

The legend of St. George and the Dragon was brought back with the Crusaders and retold countless times by the courtly appurtenances for hundreds of years. This patron saint of numerous countries has been immortalized in this stunningly detailed equestrian statue of him in full armor lancing the vicious dragon. Cold-cast porcelain with a gold leaf on selected portions. Measures a large 10 1/2" tall x 12" wide. #801782...\$65

Leather Gauntlets

The long-cuff construction of these supple, leather gauntlets has been seen throughout the ages. Approx. 15" long. Wt. 8 oz. The palm, hand and fingers are made of soft, pliable leather. So supple they give you the kind of flexibility you expect from driving gloves. Dress black. Please specify S, M, L or XL. #200376...\$42/pair XXL-\$47/pair



Renaissance Ensemble

(A) Late Renaissance Shirt-A favorite loose fitting design allowed freedom of movement. Sleeves tie at the cuff. Four eyelets on sides of the V-neck, tie closes with a leather thong. Cotton blend. **Spice brown** (shown), **red**, **black**, or **white**. S, M, L or XL. Hand wash or dry clean only. #100342...\$39 XXL-\$44

(B) European Baldric-While much of the weight of the sword rested on the hip, the shoulder strap provided extra support from the opposite side of the body. This added balance and comfort. Can be worn with any sword. Fits any period. Frog is left open so you can stitch it closed to fit the sword of your choice. Oil tanned leather. \$59 Each

Brown With Brass Buckle...

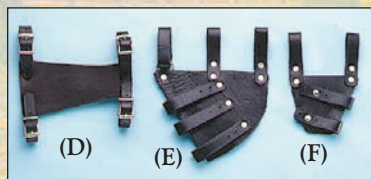
Right-handed-#200326 • Left-handed-#200380

Black With Silver Buckle...

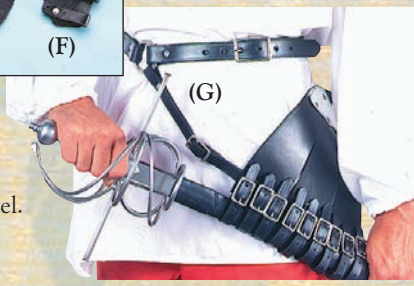
Right-handed-#200292 • Left-handed-#200424

(C) Black Knee Breeches-Are perfect for most Renaissance outfits - all the way through the 17th century. The legs lace on your calves just below the knee. The waist has a tie strap. Made of a cotton blend. Hand wash or dry clean. One size fits most. Poly cotton, hand wash. #100268...\$42 XXL-\$47

Shirt & Knee Breeches SET-\$75 XXL-\$79



Baldric also available in brown.



Streamlined Rapier Carrier & Frogs

(Hand crafted from the finest quality leather. Black w/nickel plated steel.

(D) Dagger Back Hanger-#200068...\$22

(E) Sword Hanger-#200012...\$15

(F) Dagger Hanger-#200044...\$12

(G) The rapier scabbard fits through leather loops in the carrier at the best angle for quick access. Two-piece design means that no matter who wears the belt, the carrier still hangs at the proper angle. Wt.-1 lb. \$80 Each

Left hand...#200014 • Right hand...#200456



Men's Pants

Long pants for men that are designed with a drawstring waist (28"-50") just like in the olden days. These pants will go with most periods. 100% cotton. Wear them loose, wrap the legs with cord or stuff them in your boots for your favorite look. One size fits most. Choose **black** or **brown**. #100274...\$39 XXL-\$44

CALL TOLL-FREE 1-800-883-8838

Highwayman Coat

This full-length coat is made of durable black denim and is designed with a generous split in the back, as well as the sides, for easy movement. A stylish wide period cuff with braid and buttons adorn the sleeves, while the laced double collar can be worn either up for disguise or down for city traveling. Black only. S/M or L/XL. Dry clean only. #100530...\$99 XXL-\$104

Tricorn Hat-Top grain leather with a dark brown finish. S/M (8") or L/XL (10"). #200550...\$75

Clothing Guarantee

Museum Replicas fully warrants all of our clothing articles against any defects in materials or workmanship. Please inspect your garment upon arrival for fit and quality. If it does not meet your expectations, we will happily refund your money or exchange merchandise within **30 days of the ship date**. We recommend **dry cleaning** only for years of service on our garments. Museum Replicas Limited will not give a refund or exchange an article of clothing that has been worn, soiled, washed or damaged during use. Please examine your garment before performing any of these procedures.

Gothic Ensemble

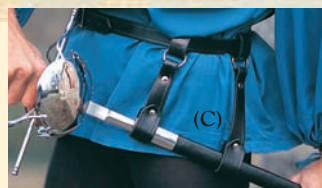
Coat-This beautiful coat and vest brings back images of vampires and monster hunters who supposedly walked the darkened cities of eastern

Europe. The long coat has broad shoulders and is meant to be worn open. The coat has been accented with gold and black trim, while twelve hand-made frogs adorn the front. 100% rayon. Dry clean only. Order S/M or L/XL #100940...\$95

Noble's Shirt-S, M, L or XL. Choose purple, black or white. Cotton blend fabric. See pg 8 for full description. #100396...\$60 XXL-\$65

Vest-Order S/M or L/XL. See pg. 48 for full description. #100942...\$79

Velvet Pants-S/M or L/XL. See pg. 14 for full description. #100836...\$43



Belts for Rapier & Swords

Made of heavy leather for years of wear. Fits size large (40" long); you can cut for smaller sizes. Black only; steel hardware. Will accommodate scabbards 2" wide and larger.

(A) Split Strap-For the swordsman inclined toward understatement. #200358...\$58

(B) Three Forked-Trimmed with metal for a bit of dash. Three large adjustable straps allow for a variety of sword widths. #200308...\$66

(C) Double Strap-Straps can be independently moved along scabbard to angle sword to suit you best. Chicago screws allow loops to adjust to fit rapier sword blades. #200258...\$54

**Circa
1520**



Sword of La Bicocca

(A) Although the rapier is strongly associated with the Renaissance, it was generally considered a civilian weapon. An effective cutting sword was more often used by the military and was much preferred in many countries, even by civilians.

This offering is well-balanced and very quick with its jimped steel parts, hardwood and leather grip, and well-tempered high carbon steel blade. Made by *Windlass Steelcrafts*®. Includes scabbard. #501122...\$255 ✂

Overall-38½" • Blade 32" long, 2" wide, ⅜" thick • Wt.-3 lbs.

(A)



Italian Falchion

(B) The falchion was considered a heavy, single edged weapon designed for heavy chopping. During the Renaissance, its form became a little more elaborate, but its functionality remained the same. This was a heavy battle sword designed to oppose the combinations of plate and mail armor. We have copied a sword in the Florence Museum dating from about the first quarter of the 16th century. The blade is high carbon steel. The guard and the pommel are steel, while the grip is polished hardwood. Scabbard mounts are also steel. A beautiful and impressive sword. Made by *Windlass Steelcrafts*®. #500882...\$210 ✂

Overall-33" • Blade 26" long, 1¾" wide, ⅜" thick • Wt.-3¼ lbs.



(B)



Venetian Stiletto Circa 1520

Overall-13¼" • Blade-8¼" long • Wt.-7 oz.

Stilettoes came in many sizes, from delicate little hideout weapons to forthright long daggers suitable for use even as a main gauche, but this is certainly one of the more attractive ones we've come across. Blade face is beautifully hollowed. Grip is wood. Made by *Windlass Steelcrafts*®. Comes complete with sheath. #400994...\$85

**Circa
1510**

Early Renaissance Shirt

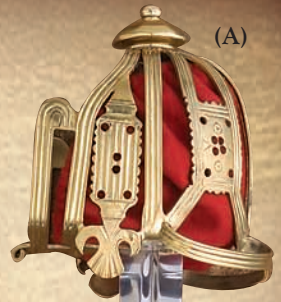
This simple, attractive shirt is suitable for a wide variety of period outfits and looks especially flattering when worn under a vest or jerkin. The billowy sleeves and open neck provide dashing comfort and generous freedom of movement for sword-play, or of course, less threatening kinds of play. Available in men's sizes S, M, L or XL. White only. Poly cotton, hand wash. #100196...\$42 XXL-\$47



Brass Basket-Hilt Claymore

(A) This Scottish Basket-hilt Claymore is the equal of any raised by clansmen as they overran the English at the Battle of Falkirk on Jan. 17th, 1746. The pierced basket-hilt is a faithful reproduction of one found on the Culloden Moor. The fully tempered high carbon steel blade is of the typical fullered, double-edge, broadsword pattern of the 1740's. The basket also has a rich red cloth liner and a scabbard is included for this great price. Made by *Windlass Steelcrafts*®. #500922...\$285 ✂

Overall-39½" • Blade-32½" long, 1¼" wide, ⅜" thick • Wt.-3 lbs. 14 oz.



CIRCA 1860

(B)

Bonny Scottish Dirk

(B) 11¾" long dirk blade showcases crisp etchings of the traditional Scottish foliage and thistle motif on both sides of the blade. 5" long, swaged false edge and a knurled pattern on the blade back mark this dirk with distinction. The black wooden handle is carved in an interweave pattern dotted with ornamental nickel silver tacks. The sheath is wood covered with leather and reinforced with metal throat and tip. Made by *Windlass Steelcrafts*® from hand forged high carbon steel. #400806...\$110 ✂

Overall-17½" • Blade-11¾" long, 1⅝" wide, ⅜" thick • Wt.-1 lbs. 2 oz.

(C)



CIRCA 1550

Early Scottish Dirk

(C) A direct descendant of the medieval ballock dagger. The blade was long and single-edged. Made to use alone, with a shield and sword, or just with a basket-hilt claymore. We have replicated an early version of the dirk. The hardwood handle is carved with a chevron like pattern copied from an original of the same time period. For those with a serious interest in the Highlands, this is a must for any collection. Includes scabbard. #400508...\$115 ✂

Overall-21" • Blade-14¾" long, 1¼" wide, ⅜" thick • Wt.-1 lb



(D)

Sgian Dubh

(D) A Scottish tradition, the Sgian Dubh is worn in the stocking of the Highlander. Our Sgian Dubh has a black wooden handle that is carved on one side, smooth on the other. Embossed nickel silver fittings feature a thistle motif. Comes with sheath. #400910...\$40 ✂

Overall-6⅝"
Blade-3¼" long
¾" wide⅝" thick
Wt.-2 oz.

CIRCA 1700

Onyx Cross Pendant

From the legends of Britain comes this polished black onyx stone emblazoned with a white cross on its face. Measures approximately 2" x 1½" with a 24" black nylon cord for hanging. #200732...\$45



Call Toll-Free 1-800-883-8838

**CIRCA
1250**

Wallace Claymore

The great Scottish hero, William Wallace, and his band of lowlanders routed a superior English force of 50,000 at Stirling Castle in 1297. These early attacks inspired Scottish Nationalism that culminated with the achievement of independence under Robert The Bruce. This two-hand sword has a well tempered high carbon steel blade with steel parts and a wood grip wrapped with cord and leather. Made by Windlass Steelcrafts®. #501106...\$295 ✂ (\$5 addl. s/h)

Overall-59" • Blade-46½" long, 2" wide, ⅜" thick • Wt.-5 lbs.



(C)

(D)

(E)

Highlands Shirt & Kilts

(A) This is a great period shirt for many outfits. However, when coupled with one of our kilts, its full sleeves and antique buttoned collar create a perfect combination for any Highland event. Natural only. Order S/M or L/XL. #100880...\$39 XXL-\$44

Colors and designs of the plaids used for kilts conveyed no specific meaning until the 18th Century. Kilts were originally pleated on the floor before being tied around the waist. We've made this attractive kilt easier for you to put on by sewing in the pleats. Four choices, acrylic wool. Choose S(28"-30"), M(32"-34"), L(36"-39") or XL(42"-44"). Dry clean only.

\$38 each XXL-\$42 each

Choose (B) Brown or
(C) Red Plaid...#100896

Choose (D) Camel/Navy or
(E) Red/Green...#100092



**CIRCA
1200-
1600**

Two-Hand Claymore

The remains of this massive Scottish war sword are housed in London's renowned British Museum. The furniture is brass, as with many Highland weapons, to prevent rust in the chronically wet mountain climate. This type of sword would have been carried to the great battlefields where the Scots struggled against their most bitter enemy, the English. Hardwood grip accentuates a very attractive sword. High carbon steel fullered blade, ready for an edge. Made by Windlass Steelcrafts®. Includes scabbard. #500940...\$295 ✂

Overall-47½" • Blade-38½" long, 1½" wide, ⅜" thick • Wt.-6½ lbs.



(A)

Highland Dress

(A) Our Highland Dress is designed so that the sleeves, bodice and skirt are made into one – eliminating the need for three garments. Dress features a full skirt matching the plaids in our men's kilt. **Red/green plaid. Black bodice with white lace trim** adds to the lovely look of this dress. Back lacing. S(6-8), M(10-12), L(14-16) or XL(18-20). Dry clean. Cotton poly bodice and blouse and acrylic and wool skirt. **#100352...\$64 XXL\$69**

Apparel For Country Lassies

(B) **Underdress**-100% Muslin with elastic wrist gathers and a drawstring neck which can be worn on or off the shoulder, whichever the occasion demands. S, M, L or XL. **#100104...\$49 XXL-\$54**

(C) **Country Maid Skirt w/Integral Bodice**-The bodice and attached skirt are made of durable 100% cotton. The bodice is laced to fit with brass grommets, and the full skirt is split down the front. Sizes S, M, L or XL Choose. **Black or emerald green. #100126...\$70 XXL-\$74**

(B) & (C) Set-\$107
or XXL Set-\$111



(B)

(C)



Circa
1500

Primitive Scottish Dirk

This early type of dirk evolved from the Kidney Dagger and was the first step toward the ornate Scottish Dirk we know today. The grip is solid hardwood and the parts are steel. The long high carbon steel blade is flexible and well-tempered. This is a must-have item for the highlander. Made by **Windlass Steelcrafts®**. Includes scabbard. **#402352...\$95 ✂**

Overall 19 1/4" • Blade 14" long, 1 1/8" wide, 3/16" thick • Wt.-1 lb.



Scottish Lion Flag

The royal standard of Robert the Bruce and Scotland. Indoor/outdoor nylon. 3' x 5' with metal grommets. Flag is double sided. **#801446...\$12**



(D)

(E)

(F)

(G)

Scottish Sporrans

Part of the Scottish Highlander's dress, the sporran hung within easy reach from the front of the belt. These fine leather pouches are required dress for Scots, but also make a tough and durable belt pouch suitable for period dress for most time periods. Complete with a high quality leather belt. 6 3/4" x 7 3/4" closed. 46" belt. Approx. weight 14 oz. Flap has steel snap.

(D) Brown-#200312...\$65

(E) Black-#200042...\$65

(F) Black w/Imitation Fur Front-#200104...\$70

(G) Brown Tied Tassel-tied thong button flap closure. 7 1/2" x 8" closed. 40 1/2" belt. **#200142...\$75**

PIRATE CUTLASS

Known by many names – “hanger,” “cuttose,” and “short saber” by infantry, or “cutlass” by sailors – this was an exceedingly popular short weapon. The steel basket protected the hand and could be used as an armored fist in the close confines of shipboard combat. High carbon steel blade made by *Windlass Steelcrafts*®. Steel pommel and leather-covered wood handle. Includes leather scabbard. #500160...\$235

The Pirate's Domain

Overall-28½"
Blade-22½" long,
2" wide, ⅜" thick
Wt.-2 lbs. 10 oz.



SKULL & CROSSBONES LEATHER HAT

This stylish variation of the standard pirate tricorne hat is fine black leather and has an antiqued brass skull and crossbones emblazoned on the front. Sizes S/M or L/XL. #200664...\$78



BUCCANEER COAT

This heavy gray woolen coat is one of the best we have ever produced. The long period cut, the large bell cuffs and the richly antiqued buttons all add up to make this coat one stunning piece of pirate garb. Choose grey or navy blue w/black rayon lining. Dry clean only. Sizes S, M, L or XL. #100780...\$125 XXL-\$140

GENTLEMAN'S LONG VEST

A great piece of apparel for wear under your pirate coat or alone. The dashing metallic brocade patterns of this rich vest are accented with antiqued buttons and an adjustable belt in the back. S, M, L or XL. Choose either gold or silver. 100% rayon, dry clean only. #100884...\$95 XXL-\$99

VISIT OUR WEBSITE

WWW.MUSEUMREPLICAS.COM

Gentleman's Long Vest shown with our Noble's Shirt found on pg. 53.

HUNGARIAN SABER

Standing in Eastern Europe, Hungary was often warring with both the west and east. Though a western type feudal state, they were also alternately allied and at war with Byzantium too. This abundance of cultural exposure was echoed in their weapons. The eastern influence shows well in this heavy saber, capable of powerful blows from horseback or foot. The short guard and large pommel are both brass and the grip is wood covered in leather. Includes green leather scabbard. Made by *Windlass Steelcrafts*®. #501084...\$175 ✂

Overall-36¼" • Blade 30" long, 1½" wide, ⅜" thick • Wt.-2 lbs. 12 oz.

**Circa
1500**



PIRATE PLUG DAGGER

All kinds of weapons found their way onto pirate ships, as long as they were good weapons. This plug bayonet served a double role. It made a very effective fighting dagger with its long, wide blade, but in a pinch it could be fit in the barrel of a musket to make a short pike. The antiqued brass parts are in the form of angels and the grip is turned hardwood. The blade has a cut-out cross and comes to a keen point. Includes sheath that will fit up to a 4" belt. #402526...\$95 ✂

Overall-15½"

Blade 9" long, 1½" wide, ⅜" thick
Wt.-10 oz.



**Circa
1500**



(A)



(B)

SPANISH BUST PESO WITH PIECES OF EIGHT OR GOLD DOUBLOONS

With the conquest of Mexico in 1519, the Spanish put the native Indians to work mining gold and silver. One set contains a Bust Peso (the coin of the realm) and three Pieces of Eight, which was the ideal way of making change. The second set has four gold doubloons, marked with the seals of King Philip IV and minted in the year 1736. Both sets are minted in the US from actual coins currently in private collections. \$10 each

(A) Bust Peso/Pieces of Eight-#801688 • (B) Gold Doubloons-#801690



(C)

PIRATE PENDANTS

A perfect addition to complete your pirate attire. \$18 each

(C) **Skull & Crossbones**-Antiqued brass. 1½" across.
#200888

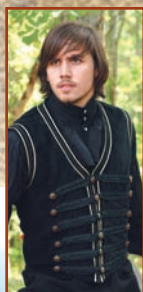
(D) **Blackbeard**-Antiqued nickel emblazoned with the seal of Edward Teach, known as Blackbeard. 1½" x 1½".
#200890



(D)

SPYGLASS SKULL CANE

Menacing antiqued brass skull hides a secret. Just unscrew the skull, and you can flip up a 5x magnifying telescope. Rich antiqued brass finish and black hardwood cane. 37½" overall. #801714...\$140



Shirt comes in 3 colors.



(C)

THE BLACK PIRATE ENSEMBLE



(A)

(B)

(D)

(E)

(F)

(A) **Vest**-A rich black cotton velvet makes up the body, which has been decorated in a Napoleonic style with gold and black trims. 18 antique brass buttons with an adjustable back strap. Dry clean only. Order S/M or L/XL. #100942...\$79

(B) **Noble's Shirt**-Three tiered cascading center front ruffle and sheered long sleeves ending in pearl button ruffled cuff. S, M, L or XL. Choose purple, black or white. Cotton blend fabric. Dry clean only. #100396...\$60 XXL-\$65

(C) **Bandana**-Suede-like texture with rough weathered lace. 100% rayon. S/M (up to size 8) or L/XL (up to size 10). #100972...\$34

(D) **Wide Pirate Belt**-This stately belt harkens back to the days of the adventurous high seas. With a large 5¼" antiqued brass buckle and a 2¾" wide leather belt, this piece looks great when combined with any of our sashes. Measures 56" long. Brown only. #200716...\$48

(E) **Sash**-Rayon sash measures 96" in length and edged with multiple tassels. Order Burgundy or Gold. One size. #100822...\$24

(F) **Velvet Pants**-Comfortable fitting pair of black stretch cotton velvet tights, which have an elastic waist. S/M or L/XL. #100836...\$43

(G) **Musketeer Boots**-Slip-on, single buckle adjustment across the front. Black suede. Hard leather sole with 1" wood/rubber heel. Sizes 8-13. #100182...\$175

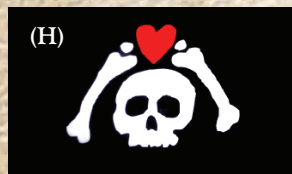
SUNDIAL COMPASS



Pirates of old used this device to find their lost islands of gold. The sundial accurately shows the hour at a predetermined latitude, while the compass faithfully points north. Antiqued brass body and lid. 3½" diameter. #801644...\$42



(G)



(H)



(I)



(J)

HIGH SEAS PIRATE FLAGS

Double sided, indoor/outdoor nylon. 3' x 5' with metal grommets. \$12 each

(H) Micro Prose-#801744 • (I) Stede Bonnet-#801746 • (J) Henry Avery-#801750



PIRATE FLAG

The classic standard of pirate Jack Rackham. Indoor/ outdoor nylon. 3' x 5' with metal grommets. Flag is double sided. #801436...\$12



(A)



(B)



(D)



(E)



FIRST MATE'S OUTFIT

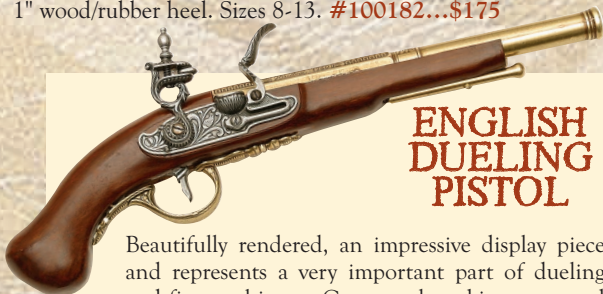
(A) **Jacket**-Even the crew can look dashing in this heavy wool bolero cut coat. With three-quarter sleeves, wide cuffs and large antiqued metal buttons, this jacket is perfect for any port of call. 100% wool with rayon lining, dry clean only. Brown only. S/M or L/XL. #100878...\$70 XXL-\$75

(B) **Vest**-Climb aboard for any adventure with this 17th century lace-up vest. Can be worn with a variety of period shirts and has even been worn by a few shipboard ladies. Red, green or navy. 100% cotton. Choose S/M or L/XL. #100520...\$45 XXL-\$50

(C) **Pants**-This long pair of durable 100% cotton pants are perfect for a variety of outfits. With its draw string waist, generous cut and slightly flared legs, and extra deep pockets, these trousers are comfortable when worn loose or inside a boot. Grey w/black stripes, black w/white stripes, solid green or black. Hand wash. S/M or L/XL. #100518...\$34 XXL-\$39

(D) **Capt. Jack Tricorn Hat** Inspired by the swashbuckling antics of Capt. Jack, it's for those who still live by the Pirate Code. Top grain leather with a dark brown finish. Choose S/M(8") or L/XL(10"). #200550...\$75

(E) **Musketeer Boots** Slip-on, single buckle adjustment across the front. Black suede. Hard leather sole with 1" wood/rubber heel. Sizes 8-13. #100182...\$175



ENGLISH DUELING PISTOL

Beautifully rendered, an impressive display piece and represents a very important part of dueling and firearm history. Cast metal working parts and wood stocks. Non-firing. #801226...\$42

Order 2 and Save - 2 for \$75

SHIPWRECK PIRATE COINS

Highly detailed replica coins in cast metal. Sizes vary 3/4" to 1". Great accessory for all costumes. #801410...\$7



PIRATE'S COMPANION

Where would the seafaring rogue be without his trusty cutlass? This stout sword is made to be as rugged as the originals. High carbon steel blade. Gorgeous brass basket and nice hardwood grip. No need to sail the high seas in search of ill-gotten riches; this beauty is a treasure in itself. Made by **Windlass Steelcrafts®**. #500180...\$185 (S) (\$5 addl. s/h)

Overall-32" • Blade-26" long • Wt.-2 lbs.



PIRATE COIN NECKLACE

This is a magnificent recreation of an actual Spanish "Pillars and Waves" Pieces of Eight coin. This double-sided, sterling silver coin is a perfect companion on any long voyage. 24" inch rhodium plated, double rope chain with clasp included. Measures approximately 1.3" long, 1" wide, and .06" thick. #801312...\$49

VISIT OUR WEBSITE
WWW.MUSEUMREPLICAS.COM



SKULL & CROSS SWORDS PENDANT

Menacing red crystal eyes and antique finish sets the dreaded tone and the high detail is wicked with the skull and crossed swords design jumping off your chest. Includes braided cotton necklace with metal clasp. 1" x 1" x 3/8" thick. #801362...\$7

BLACK ORCHID ENSEMBLE

The high seas have never looked better, than with the appearance of the deadliest female pirate on the Spanish Main, the Black Orchid. All three pieces compliment each other or can be worn separately. Available in S(8-10), M(12-14), L(16-18) and XL(20).



(A) **Black Orchid Jacket**-Made of a brocade black-on-black fabric, with lace-up sleeves and a sewn on leather corset on the outside. Dry clean. #100738...Reg. \$130...Closeout \$99

(B) **Black Orchid Shirt**-Made of poly/cotton blend. V neck opening with tie. Sleeve cuff trimmed with an abundance of lace. Red only. Hand wash. #100734...\$39

(C) **Black Orchid Pants**-Black stretch velour pants, with leather straps, which buckle around your calves. Dry Clean. #100736...\$48

(D) **Leather Corset**-Jump into action with this swashbuckling corset. Made of the finest black leather, it is decorated with an array of antiqued silver buttons and buckles. A lace-up back allows for adjustability. Sizes S, M, L or XL. #100600...Reg. \$95...Closeout \$69

LADY'S BOOTS

These boots come to below the knee and lace up for a good firm fit and have just enough heel for a little elegance without compromising the good footing that the swordswoman demands. 20" boot length. 1 1/2" heel. Black only. Whole sizes 6-12. #100088...\$150





SCOTTISH CUTLASS

The crashing of waves, the roar of cannons, the shout of sea roques through the foreboding mist – this cutlass can't help but unleash adventurous images. Scottish born Capt. (William) Kidd. As seen in period art, the Scottish Basket-Hilt was at times married to a cutlass blade (this one has a double edge for the first 9" of the blade). The basket itself provided excellent hand protection and could deliver a hard blow in the crowded melee that ensued onboard. Made by **Windlass Steelcrafts®**. Includes scabbard. **#500920...\$265** ✂ (\$3 addl. s/h)

Overall-31½" • Blade-25" long, 2⅛" wide, ⅜" thick • Wt.-3 lbs. 4 oz.



**CIRCA
1690**



PIRATE'S SOUL

Inside this deluxe interactive adventure you'll find engaging authoritative text on all facets of pirate life and history, outrageously complemented by rich full-color art and over 25 fun and fascinating

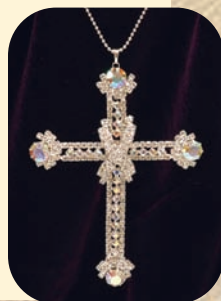
3-D interactive features, including a period compass, a removable nylon replica "Jolly Roger" flag, a fold-out treasure map, period playing cards, a cat-o'-nine-tails, a 1696 Wanted poster and much more! 11¼" x 9 ¾" hardcover.

#801414...\$29

CRYSTAL CROSS

This dazzling cross measures a full 3½" and has over 120 Austrian crystals adorning its face, with 4 larger stones at each end. A delicate fine beaded chain with clasp compliments the look.

#200642...\$28



ELEGANT 17TH CENTURY DRESS

For the lady of class, this dress is for times at court or other official functions. Our **burgundy** and **black** floral dress has a black center front skirt panel adorned with lovely trim as well as the sleeves. S, M, L or XL.

Dress is 60% cotton and 40% polyester. Sleeves and underskirt are made of 100% corduroy. Dry clean. **#100438...Reg. \$139...Closeout \$99**



SALAGIA GOBLET

This unique heptagonal goblet is based upon an opulent 16th Century glass example and is encircled with the SALAGIA, the initials for the Seven Deadly Sins. Fine drinkable pewter. 5½" tall. Made in England. **#801962...\$90**



PIRATE CAPTAIN'S HANGER

Beautifully antiqued brass and steel hilt with fully tempered high carbon steel blade is worth its salt against any seabeast or while swarming the side of a galley. Includes scabbard. Made by *Windlass Steelcrafts*®. #500968...\$175 ✂

Overall-32 1/2"
Blade-26" long, 1 1/8" wide, 3/16" thick
Wt.-2 lbs.



CAPTAIN'S COAT

Our Captain's Coat is taken from a northern European military leader's coat of the late 1700's, and is made roomy for comfort. Made of a lush cotton corduroy in your choice of **burgundy**, **royal blue** or **hunter green**. Delicate gold and black trim shimmers. Colors may vary slightly. Available in S(42" chest), M(46" chest), L(50" chest) and XL(54" chest). Wear it with comfort and authority. Dry clean only. To complete this outfit, we used our Knee Breeches, which can be found on pg. 40. #100040...\$120



PIRATE BELTS & SASHES

Wide Pirate Belt-This stately belt harkens back to the days of the adventurous high seas. With a large 5 1/4" antiqued brass buckle and a 2 3/4" wide leather belt, this piece looks great when combined with any of our sashes. Measures 56" long. Brown only. #200716...\$48

Sashes-These metallic rayon sashes measure 96" in length and are edged with multiple tassels. Order Burgundy or Gold. One size. #100822...\$24



PIRATE'S BALDRIC

In this cutlass baldric, not only do you get a classic form for wearing a sword but also two close quarter fighting knives with real polished bone scales that ride firmly in integral scabbards. This **black baldric** will fit all types of swords. Frog is left open for the wearer to customize. One size fits most. (Right hand cross-draw: the knives are in front. Left hand cross-draw: the knives are in back.) Knives from tempered high carbon steel. Screws not included. #200634...\$98

Overall-10 3/4" • Wt.-6 oz.
Blade-6 1/4" long, 7/8" wide, 3/16" thick

SKULL WITH CROWN FLAG

A perfect flag for a pirate king. Double sided, indoor/outdoor nylon. 3' x 5' with metal grommets. #801748...\$12



PIRATE KING CUTLASS

Features a high carbon steel, hand forged blade, well-tempered and with full tang as it was meant to be. The menacing cup guard is pierced through with a fearsome skull & crossbones. Grip is wood covered with leather and wire. The steel hilt and scabbard parts are artificially aged as if pulled from the darkest depths of Davey Jones' locker. #500964...\$255 ✂

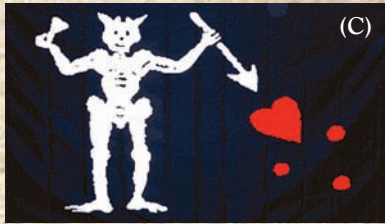
Overall-32 3/4" • Blade-25 3/4" long, 1 1/8" wide, 3/16" thick • Wt-2 lbs. 6 oz.



(A)



(B)



(C)

FLAGS OF THE CARIBBEAN

These large 3' x 5' nylon indoor/outdoor, double-sided flags are authentic reproductions of the standards of some of the deadliest pirates in history. Grommeted for durability. \$12 Each

(A) Chistopher Condent-
#801438

(B) Edward Lowe-#801450

(C) Edward Teach (Blackbeard)-
#801440



CAPTAIN'S QUILL PEN & INK POT

You'll be able to chart a course for adventure with this magnificent pewter pen and inkpot. The pen (ballpoint, so you don't really have to contend with messy inkblots and the like) has a large 11" burgundy feather and finely detailed skulls and floral inlay work on the handle, while the inkpot is equally detailed with a matching pattern. Replaceable ballpoint pen makes this an item which can last forever. Made in England. #801568...\$56



NOBLE'S SHIRT

Beautiful late renaissance shirt with standing rucked collar front and pearl buttons. Three tiered cascading center front ruffle and sheered long sleeves ending in pearl button ruffled cuff. A must for the well dressed lord. S, M, L or XL. Choose purple, black or white. Cotton blend fabric. Dry clean only. #100396...\$60 XXL-\$65



LETTER OF MARQUE BELT BUCKLE

This intricately designed belt buckle is hand crafted in England and is made of fine English pewter. Measures a full 4" X 2 3/4" and can accept up to a 1 1/2" wide belt (not included). #200876...\$60



VISIT OUR WEBSITE: WWW.MUSEUMREPLICAS.COM

Götaaland Sword

This is a fine example of the true ring-hilt sword. Its highly decorated parts have an antiqued finish including the ring (the purpose of which is still unknown). Tempered, high carbon steel blade. Includes scabbard with brown leather shoulder strap with detailed parts. #500960...\$345

Overall-36" • Blade-30¾" long, 1½" wide, ⅜" thick • Wt-2 lbs. 10 oz.

Circa
850
AD



(A)



(B)



(C)

(A) **Leather Jerkin**-This stunning brown leather, short sleeved jerkin can be worn many different ways or with the padded shirt for the ultimate in dashing attire. High grade leather with a buckle-up front. Sizes S, M, L or XL. #100764...\$239

(B) **Padded Shirt**-A lace-up cotton gambeson that can be worn as a stand alone garment or as an undershirt with our leather jerkin. The sleeves are decorated with a nordic celtic string design. Dry clean only. Sizes S/M or L/XL. #100766...\$60 XXL...\$65

(C) **Cape**-This full length period cape is the perfect piece to complete the look of a true celtic prince. The soft olive green cotton velvet is richly accented with a contrasting stripe, bordered by lacing. Dry clean only. One Size. #100768...\$89

(D) **Velvet Pants**-Comfortable fitting pair of black stretch cotton velvet pants, which has an elastic waist. S/M or L/XL. #100836...\$43

(E) **Boots**-These calve-high boots are accented with a series of period straps. The soft suede exterior is complimented with a plush rayon lining. The anti-skid rubber soles ensures this boot to be a comfortable, all day piece of apparel. Sizes 8-13. #100770...\$165



(E)

Call Toll Free
1-800-883-8838

Viking Longship

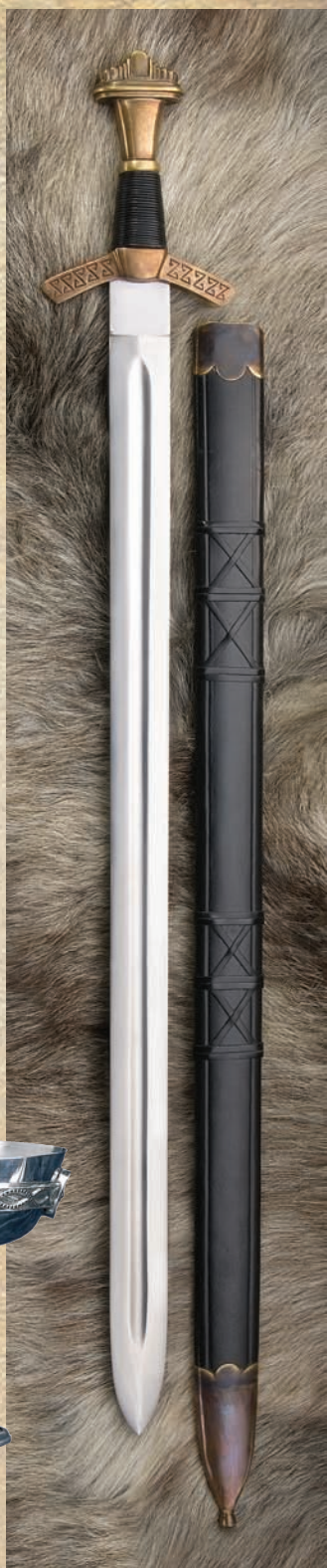
A museum quality reproduction of the famous Drekar (Dragonhead) Viking Longship. It could take through the waters with oars or sail with little loss to speed or maneuverability. Cast in resin to capture fine details, this collector quality ship features hand painted accents and hand strung rigging. Includes display base. 13½" long, 11½" tall. #801090...\$64



Historical Excalibur

If King Arthur actually existed, many historians place him as a war leader seeking to halt the invasion of the Saxons after the fall of Rome. There are many indications that England did, after a time of much strife, have a brief period of peace and prosperity in what is now called "the Dark Ages". This sword is of a type that was widely in use during this period and would be what a hard fighting warrior would prefer. Nicely balanced, well-tempered high carbon steel blade complimented with antiqued brass parts. Period scabbard included. Made by Windlass Steelcrafts®. #500798...\$225 ✂

Overall-37" • Blade-31 1/4" long, 1 5/8" wide, 3/16" thick • Wt.-2 lbs. 12 oz.



Embossed Viking Helmet

This helmet is rich with deeply embossed detail across and around the crown and on the nose guard. Raised traditional dog designs embellish the hinged cheek plates. 18 gauge steel has an antiqued finish. Approx. 26" inner cir. with an adjustable leather liner with chin strap. Wt.-3 lbs. 12 oz. #300386...\$235



Danish Hand Axe

To the victims of the Vikings, they were all Danes. It didn't matter whether they came from Norway, Denmark or Sweden, they called them Danes. Smaller axes were quite popular for all sorts of work, hewing the limbs of trees as well as the limbs of men. They could be thrown if needed, but were quite handy in close combat with or without a shield. Not only is this a fine replica, it is a fine axe in its own right. High carbon steel blade. Made by Windlass Steelcrafts®. #600642...\$85

Overall 21" • Wt.-1 1/2 lbs.



Chalisbury Grail

This faithful reproduction was created from a 17th century drawing of the mythical Grail, believed to be concealed within the Chalisbury Cathedral. It is made of fine English pewter and can be used for drinking. Twelve hematite stones decorate the base, while four cornelian cabochons adorn the stem. 4" high, 5" in dia. #801424...\$85



Cernunnos Viking Tankard

This heavy gauge tankard holds one pint of your favorite beverage and is made in England of the finest pewter. Etched knotwork and cast handle. 801560...\$65

A Greenman For Every Season

Intricate classical designs of the mythical Greenman bring the seasons to life and are attractive decorator accents. The four seasons plaques feature a different greenman on each, surrounded by the appropriate foliage. Each is lightly hand washed with subtle color suitable for its season. 5 5/8" dia. Cold cast resin. #801406...\$35 set of 4





(A)

(A)



(B)

Woolen Viking Tunics & Belts

(A) These are the finest viking tunics we have ever offered. Made from 100% wool, the rich fabric is heavy and accurate to the period. The sleeves, collar and hem are accented

with a thick Nordic design trim. An authentic addition to your Viking wardrobe. Dry clean only. Available in either **Grey** or **Brown**. Choose S/M or L/XL. #100804...\$65 XXL-\$69

(B) Belt-A truly fantastic belt made of a heavy grade brown leather. It measures a full 74" in length. Nickel studs adorn the belt. Brass buckle. One size. #200674...\$48

(C) Medieval Long Belt-This wonderful period belt is a fantastic addition to a variety of different outfits. This style belt was worn from the Dark Ages through the High Middle Ages. Made of a thick, top grain leather, it is richly adorned with antiqued and polished brass accents, buckles and belt tip. The extra long length makes it not only historically accurate, but wearable by just about any sized man. Brown only. One size: approx. 70". #200672...\$110



(C)



Thor's Hammer Pendant

Cast in sterling silver & carries the name of the hammer, MJOLNIR in Futhark runes on black background. Includes 24" long rhodium plated chain. #801308...\$29



Viking Raven Longship



The longship, which could take to the waters with oars or sail with little loss to speed or maneuverability made it possible. Cast in resin to capture all the fine details, this collector quality ship features hand painted accents and hand strung rigging. Includes display base. 12 1/4" long, 10" tall. #801300...\$60

Feasting Utensils

For the reenactor on the go. Our set of spoon, knife and fork fits into a tie-fold open belt pouch for a great combo that is easy to take along to the fair, picnic, campout. Comes with leather pouch (not sold separately). #800438...\$50



Visit Our Website For More Viking Swords

- (A) Damascus Viking Sword-#500262...\$425 ✂ • (B) Leuterit Sword- #500806...\$265 ✂
 (C) Norwegian Viking Sword-#500944...\$265 ✂ • (D) Dark Age Sword-#501046...\$235 ✂
 (E) 5 Lobe Viking Sword-#501052...\$235 ✂

www.museumreplicas.com



Viking Tunic

During the Viking, Norman and Saxon periods, men of all classes wore tunics. The front was open a few inches and adorned with trim as well as the hem and sleeves. One size fits most. (Belt not included). **Green** or **brown**. 100% cotton. Dry clean only. #100018...\$45 XXL-\$49



Seax

CIRCA 750

The seax, or sax, was universal in Northern Europe. Carried and used by the Saxons, Angles, Vikings and German tribes, its use probably dates before the fall of Rome and continues on into the early Middle Ages. The lobed pommel and guard are brass, and the wood grip is studded with brass tacks, for a very secure and comfortable grip. The blade is etched on both sides, flat ground, and capable of taking and holding a razor sharp edge. Leather sheath riveted and laced like the originals, has two thong slots. Made by **Windlass Steelcrafts®**. #401022...\$125 ✂

Overall-19" • Blade-13" long, 1 1/8" wide, 3/16" thick • Wt.-1 lb.

The remnants of this Seax can be seen in the British Museum.



Circa
400

Frankish Axe

The ancient Frankish Warriors would form a rough line an arm's throw from their foe and hurl light spears and these axes before charging in with sword and shield for individual combat. This distinct axe is perfect for throwing with its solid steel head and hardwood shaft. Made by **Windlass Steelcrafts®**. #600770...\$45

Overall-19 1/4" • Blade-6 1/4" x 2 1/2" edge • Wt.-2 lbs.

Viking Shield

This finished shield has been prestained a **dark brown** and has a steel boss, decorative strips and rim, all bolted on. The back is covered in felt and has a grip and arm strap. 1/2" thick by 29" round. #801108...\$175 (\$5 addl. s/h)



Sticklestad™ Viking Sword



(A)

(A) Named for the Battle of Sticklestad. Made from high carbon steel by *Windlass Steelcrafts*®, the sword is a beautifully balanced and highly effective weapon. Capable of both cutting and thrusting, it is also a delight to the eye. Pommel and guard are tastefully decorated with copper. Leather covered wood grip. Complete with scabbard. #500670...\$245 ✂

Overall-37" • Blade-31" long, 2" wide, 3/16" thick • Wt.-2 lbs. 12 oz.

Barbarian Helmet

(B) This fearsome helmet has a built-in leather mask and stiff leather lames around the back. The shell is hammered 16 gauge steel with an antiqued finish. Adjustable liner. Made by *Windlass Steelcrafts*®. #300366...\$245



(B)

Long Bladed Hewing Spear



(C) Although we do not know the exact form and shape of the Viking hewing spear, we do know that they were used. This is a spear that would thrust effectively, and yet have the power to cut decisively. High carbon steel blade. Slim and attractive, it is just the spear to carry on your next Medieval outing. Made by *Windlass Steelcrafts*®. #600444...Reg. \$45...Catalog Special \$39

(C) Overall-25" • Blade-16" long, 2 1/4" wide

Viking Spear

(D) Despite the adulation and reverence given to the sword, the spear was generally the weapon of choice for Vikings. Used as throwing weapons and as pikes, spears were an indispensable part of their daily routine. This Viking spear is hand forged of a tough, high carbon steel by *Windlass Steelcrafts*®. Spearhead includes a 4 1/2" steel socket. 9 1/4" long spear head is 2" wide and 1/8" thick. 14 3/4" overall. Wt.-1 lb. Pole not included. #600050...\$36



(D)

Butt Caps

Can be used for any spear since the beginning of the Iron Age. Made of mild steel, and give an improved appearance as well as balancing the spear. These are generic, and do not represent any one specific time or place. Ready to mount. \$25 Each

(E) Round Ended-4 3/8" overall. Wt.-8 oz. #600226

(F) Flat Ended-5" overall. Wt.-8 oz. #600248

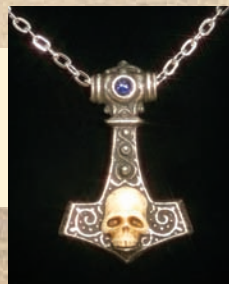


(E)

(F)

Skull Thor's Hammer

A true viking power amulet. Made of fine pewter with both a blue jewel and resin bone skull inset in the center. Comes with a 22" metal chain with clasp. Made in England. #200724...\$30



Visit Our Website www.museumreplicas.com

Swedish Viking Sword

This beautiful and unique sword was unearthed in Sweden and can be seen in "Cultural Atlas Of The Viking World" as well as other publications. Quite famous as an artifact, it displays the unknown swordmaker's skill and imagination. The pommel is almost fanciful while the guard displays one of the classic Viking forms. It has the typical wide fullered slashing blade that the Vikings loved. A great chance to own a copy of a well-known sword. Parts are steel and grip is wood covered in leather. Comes with scabbard. Made by *Windlass Steelcrafts*®. #501054...\$255 ✂

Overall-39½" • Blade-32¾" long, 2¼" wide, ⅜" thick • Wt-2 lbs. 6 oz.



**CIRCA
950**



**CIRCA
14th Century**

Foot Soldier's Falchion

In hard pressed close combat a full size weapon could be difficult to employ; that's when a short sword came into play. This type of weapon was usually carried as a secondary sword most often worn on or behind the right hip, leaving the left side open for the carry of a larger weapon. The size and shape of the blade made this piece very handy for camp life too. #500914...\$185 ✂

Overall-28" • Blade-22" long, 1¼" wide, ⅜" thick • Wt-2 lbs. 3 oz.

Reindeer Fur

Beautiful, high quality reindeer fur from Finland. Not only was fur worn, but it provided a durable, comfortable ground cover. Note: these deer were hunted by Lapps as their main food source and not killed for industry or sport. They cherish animals and the sustenance they provide. Approx. 5' long x 3' wide. Weighs about 3 lbs. #800624...\$120



Cross Of The Isles

A truly beautiful cross pendant for a period gathering or everyday wear. This sterling silver cross measures 1¼" and is accented with a blood red stone in the center. An adjustable 24" leather thong is included. #200882...\$36

Celtic Cross Box

Whether you use this as a jewelry box or simply a conversation piece on a coffee table, this coffin is sure to catch everyone's attention. The lid is emblazoned with a beautiful Celtic cross, while the remainder of the box is heavily embellished with Celtic designs. A black flocking covers the interior. Resin. 7" x 4½" x 2½". #801578...\$22



ROMAN ARMOR

Made by *Windlass Steelcrafts*®



(A)

(A) Roman Trooper's Helmet-Complete with cheek plates and brass fittings. Formed of 18 gauge steel and brass. Approx. 4½ lbs. #300074...Reg. \$190...**Catalog Special \$145**

(B)

(C)

(B) Lorica Segmentata-Introduced in the ranks of the Roman Army during the first century A.D. and widely used at the height of the Roman Empire. Our replica is superb, made of 18 gauge steel. It is closely copied from a type of Lorica found in Newstead, Scotland, that dates from the second century A.D. This armor is quite flexible and allows plenty of freedom of movement. Wt. 17 lbs. 6 oz. Fits chest sizes 42" to 46". #300176...\$295

(C) Baldric-Brown leather. Fits Maintz & Pompei Gladius. #200368...\$40

(D) Belt-Primarily ornamental, this Roman soldier's belt, called a "Cinculum Militaire", was comprised of a studded leather belt with varying numbers of hanging leather strips. Based on one that was popular about 100 A.D. Will accommodate up to a size 46" waist. #200468...\$65

(E) Greaves-Replica steel greaves are based on patterns pictured on Trajans Columns and feature an articulated knee piece for extra protection. L-18¾", W-8¾", Bend-5½". #300010...Reg. \$77/pair...**Catalog Special \$69 pair**

(F) Roman Tunic-This oversized shirt extends to mid-thigh, giving it a distinctive look. Red only. Romans took the color from the Spartan's red cloaks as later did the English army. Spartans wore red so that their enemies would never see them bleed. Male sizes: S, M, L or XL. #100042...\$49 **XXL \$54**

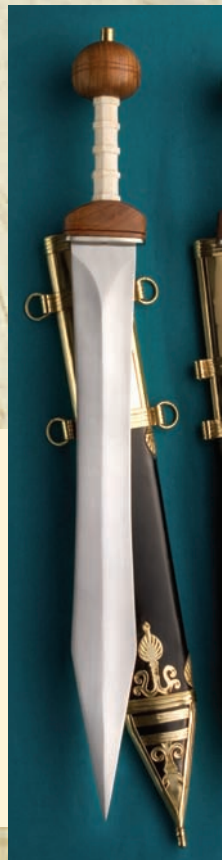
(G) Shield-This wooden oval cavalry shield is covered front and back with leather. It has a black steel boss and gold leather wings and lightning on the face and arm straps on the back. Curved shield is 23" x 39" by 5/16" thick. Wt.-7 lbs. 4 oz. #801068...\$160

(\$15 addl. s/h, no express)

(H) Roman Sandals-Worn by the Roman Legion for the long march and the long campaign that often followed it. The hobnails kept the sole from wearing out too quickly. Leather construction. Brown and limited quantity in black. Whole sizes 6-12. Excellent quality. #200254...\$65



(H)



(F)

MAINTZ GLADIUS

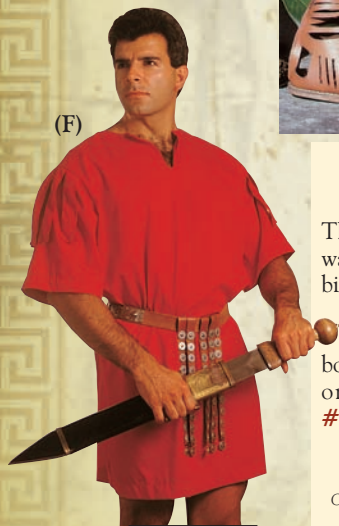
The early Gladius (our version is the Maintz pattern) was waisted with a long point that combined cutting power and stabbing ability in one handy weapon. It was not uncommon to find

4th century legionnaires carrying this earlier model. This is the sword that conquered most of the known world. High carbon steel. Made by *Windlass Steelcrafts*®. Faux ivory grip and ornate brass applique on the scabbard. 2¼" wide. #500360...\$215

Overall-28" • Wt.-2 lbs. 6 oz.

Blade-19½" long, 2¼" wide, 3/16" thick

Originals were excavated from the ruins of Pompeii. You can see examples in H. Russell Robinson's book "What The Soldiers Wore On Hadrian's Wall."



LATE ROMAN SWORD

This sword is based on the eagle-hilted sidearms portrayed on the statues of the Tetrarchs in Venice. A type used by mounted fighters of the Eastern Empire. The eagle head pommel is brass as is the guard. The single-edged blade can deliver a heavy blow, especially from horseback, and is made from high carbon, fully tempered steel. Made by **Windlass Steelcrafts®**. Comes with decorative scabbard. #500916...Reg. \$235...Closeout \$175 ✂

Overall-29" • Blade-21¼" long, 2" wide, ⅜" thick • Wt.-2 lbs. 9 oz.



(A)



(B)

GRECO - ROMAN CRESTED HELMET

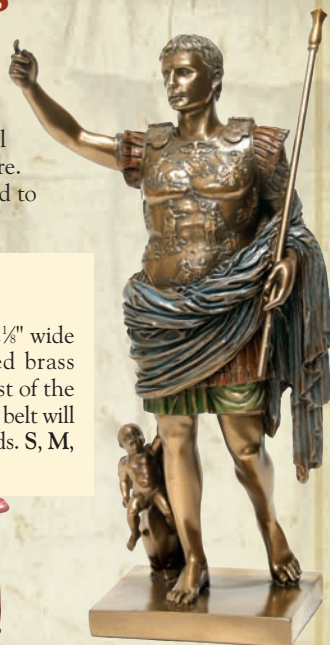
This spectacular crested helm originally appeared in a more primitive form in Greece around 350 B.C., but saw its most popular use during the Roman Empire. It saw service with Legionnaires, Centurions and Legates up to 400 A.D. and varied from plain to decorative. Our version is made from hand-worked brass and is adorned with handsome leather accents and a horsehair crest fit for any officer. A must for any reenactor or collector of fine militaria. Wt. 6 lbs. 15 oz. Dia. 12". Circumference 24". Comes lined. Stand not included. Crests not interchangeable. **\$395 Each**

(A) Black Crest...#300156

(B) Red Crest...#300210

AUGUSTUS CAESAR STATUE

Augustus Caesar was a military and political leader who played a critical role in the transformation of the Roman Republic into the Roman Empire. This magnificent piece is made of a solid resin, which has been metalized to give the look and feel of ancient bronze. 11½" tall. #801674...\$48



ROMAN BELT

This thick leather light brown belt is 2½" wide and has a brass buckle and antiqued brass embossed plates. Plates are riveted most of the way around with two hanging rings. This belt will look good with a large range of our swords. S, M, L or XL. #200646...\$48

HELMET STAND

Handsomely accommodates any size helmet from Morians to Great Helms. Beautifully turned hardwood post has sturdy round, beveled base. Stained. 18¼" tall. Comes unassembled. Wt. 2 lbs. 10 oz. #800040...\$30



Circa
300-400



GLADIATOR

(A) Gladiator Leather Armor-Adding extra protection from glancing blows, this leather armor allows for easy fighting in the Circus Maximus. Made from soft, yet very tough brown leather strips, this over-vest is perfect when coupled with our protective gladiator belt. Order S/M or L/XL. **#100990...\$160**

(B) Tunic-The basic blue tunic of a slave, who was chosen to fight for his freedom in the arenas of Rome. This simple rough weaved tunic has unfinished edges, giving it a peasant-like appearance. Blue. S/M or L/XL. **#100966...\$39**

(C) Belt-This wide kidney belt offers great protection in the Colosseum. Made of an aged-dyed leather, the belt has three adjustable straps with antiqued brass buckles for a secure fit. Brown. Order S/M or L/XL **#200972...\$85**

Vambraces and Greaves-Made from heavy grade leather and though thick, are easy and comfortable to wear. Good for a large variety of outfits.

(D) Vambraces-**#200852...\$40**

(E) Greaves-**#200854...\$65**

(F) Wooden Gladius-Not only were wooden swords used by Gladiators for training, but if he survived the arena and lived long enough to retire, a symbolic wooden gladius (Rudius) was awarded as a token of discharge and freedom. **#600774...\$39**

Overall-27" • Wt-¾ lb.

Blade-20" long, 1¼" wide, ⅝" thick

(G) Sandals-All leather construction with rubber soles and three adjustable ankle straps. Men's whole sizes 7-13. Brown. See page 68. **#100958...\$74**



(F)



(G)



(E)



(H)



(I)

GRECIAN PENDANTS

Sand-cast pendants. Each comes with a leather thong. **\$18 each**

(H) Sparta-antiqued brass with the chevron of Sparta. 1¼" across. **#200886**

(I) Medusa-antiqued nickel with the head of Medusa. 1⅜" across. **#200884**

THE POMPEII GLADIUS

(A) The Roman Army's approach to warfare was direct and pragmatic. It chose the Gladius as its principal sidearm because it was practical and efficient and excelled in any close combat situation. A later version (the Pompeii) was not waisted and had a shorter point but was effective. This is the sword that conquered most of the known world. High carbon steel. Made by **Windlass Steelcrafts®**. Maple hilt. 2" wide. #500598...\$195 ✂

Overall-28" • Blade-19½" • Wt.-2 lbs. 6 oz.

Originals were excavated from the ruins of Pompeii. You can see examples in H. Russell Robinson's book "What The Soldiers Wore On Hadrian's Wall."



ROMAN PUGIO

(B) The distinct shape of the Pugio blade was excellent for a close quarters fight, and was used throughout the legions. A wood hilt is paired with a fully tempered high carbon steel blade. Comes complete with a wood scabbard covered in leather with brass parts. Based on remains in the British Museum. Made by **Windlass Steelcrafts®**. #401392...\$95 ✂

Overall-19¼" • Blade-12¼" long, 2½" wide, ⅜" thick • Wt-1 lb.



Circa 100



BIBLE COINS

Minted from originals, these accurate looking and maybe more important, feeling, coins are as close as you can get to trading the actual currency in eras gone by. All coins are solid cast metal with accurate patina, thickness and weight. Perfect for teachers, reenactors and collectors. Made in the USA. \$10 ea.

(D) **Coins of the Bible Set 1-** covers 37 B.C. – 37 A.D. and includes Herod The Great, Shekel of Tyre, Herod Antipas, Stater of Antioch, Widow's Mite and Tribute Penny of Tiberius. #801694

(E) **Coins of the Bible Set 2-** covers 66 A.D. – 133 A.D. and includes Dilepton Simon Nasi, Shekel, Judea Capta, Denarius, Quarter Shekel and Shekel Bar. #801692



CALL TOLL-FREE
1-800-883-8838



GLADIATOR SWORD

(C) Life in the arena could be ended as swiftly as the combat. Many types of weapons were employed but few were relied on as much as a good sword. This Gladiator Sword, based on an Iberian type, is a no-nonsense weapon with a short blade capable of powerful cuts and lighting fast thrusts. Antiqued brass parts with a hardwood grip shaped for a positive grasp is married to a well-tempered high carbon steel blade. Scabbard included. Made by **Windlass Steelcrafts®**. #501124...\$145 ✂

Overall-23½" • Blade-17" long, 2½" wide, ⅜" thick • Wt-2 lbs. 4 oz.

Circa 37 A.D.

SWORD OF TROY

Did Troy really exist? There are ruins in Asia Minor that many archaeologists think may be the walled city where Greeks may have settled and thrived, but we only have the writings of Homer that tell of it. We have named this sword for the fabled city, with its leaf-shaped blade and beautiful hardwood and bronze hilt that could have fought off enemies for years. Made by *Windlass Steelcrafts*®. Includes scabbard. #501094...\$215 ✈

Overall-32 1/4" • Blade-26" long, 2" wide, 3/16" thick • Wt.-2 lbs.

SPARTAN LAKONIA

There isn't any doubt that the Spartan Army was one of the toughest on record. We have copied a Spartan short sword taken from the book, "The Spartan Army". This is a potent weapon that would be superb in the brutality of ancient hand-to-hand combat. The leaf shaped blade is high carbon steel. Grip is bronze, with a wooden scabbard covered in leather. A very effective close combat short sword. Made by *Windlass Steelcrafts*®. #401178...\$145 ✈

Overall 19 1/4" • Wt.-2 lbs.

Blade-14 1/2" long, 2 3/8" wide, 3/8" thick



Circa 5th
Century BC



GREEK TUNIC

This short cut tunic is perfect for either the market streets or under any Greek armor. The sleeves and bottom hem are accented with a Greek trim which emulates the waves of the Aegean. 100% cotton. Order S/M or L/XL. #100876...\$39

PEGASUS

Museum quality reproduction, elegantly rendered in cold cast resin with porcelain for amazing look and feel. The mythological stallion's detail is so sharp; it appears he could fly right off the cloud base, so catch him while you can. 11" tall. #801470...\$34



VISIT OUR WEBSITE

WWW.MUSEUMREPLICAS.COM

Circa 200 BC



FALCATA

The Celt-Iberians of Greek times were justly famed for the Falcata; one of the most devastating swords ever made! The inward curving blade delivers a tremendous blow and could split both shield and helmet. Considered to be of Greek, or possibly Etruscan origin, this sword spread into Southern Russia and also Spain. It was in Spanish hands that it was most feared by the Romans. The blade is made from high carbon steel. The handle is solid brass. Made by **Windlass Steelcrafts®**. Comes with scabbard. #500062...\$195 ✂

Overall-25¼" • Blade-20⅞" long, 2¼" wide, ⅜" thick • Wt.-2 lbs. 14 oz.

CLASSIC HOPLITE SWORD

The Greek Hoplite was a tough, effective citizen-soldier, and was ferocious in defense of his home city. This is the leaf shaped blade that was quite popular throughout the ancient world and is based on many illustrations and excavated examples. Steel guard and pommel, with wood grip covered with leather. High carbon steel blade capable of taking and keeping a razor edge. Wood scabbard covered with leather. One of the finest of the ancient world's weapons. Made by the craftsmen at **Windlass Steelcrafts®**.

#500734...\$165 ✂

Overall-28½" • Blade-22" long, 2⅞" wide, ⅜" thick
• Wt.-2 lbs. 4 oz.



Circa 5th
Century BC



(A)



(B)



(C)

GREEK GODS

Museum quality down to the finest details, befitting the mythical gods of Greece. Cold cast resin with porcelain for incredible look and feel.

(A) Greek God Posiedon-Approx. 12½" tall.
#801134...\$30

(B) Roman Chariot-10" X 6". #801574...\$34

(C) Greek God Zeus-5¾" x 6¼" base x 12" tall.
#801466...\$35

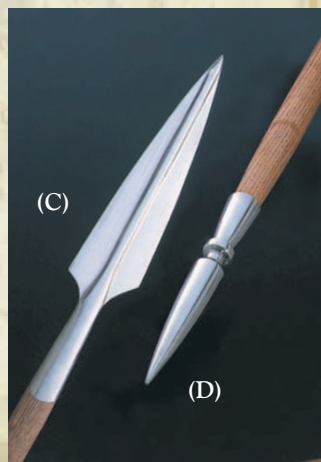
GREEK SPEARHEAD & BUTTCAP

(C) **Spearhead**-the Greek Hoplite's principal weapon was "the long shadowed spear." It was a weapon that varied in length from 6 to 18 feet, and could be used both as spear and pike. The earlier versions were made of bronze, but iron, once it was available, became the material of choice. #600074...\$45

Overall-16" • Blade-11" long, 2¾" wide • Wt.-1 lbs. 4 oz

(D) **Buttcap**-protects the shaft and keeps it from splintering, and gives balance for the spear. #600036...\$22

Overall-8½" • Wt.-1 lbs. 4 oz.



(C)

(D)



Practical Katana Plus

Perfect for the rigors of daily cutting practice required by many martial art classes devoted to the study of Japanese swordsmanship. The grip of this katana is a full 12 inches long, covered in rayskin and wrapped in leather instead of the more traditional bindings of cloth.

The tsuba is a large 3 3/8" with an open pattern to keep its weight down while still providing good hand protection when cutting. Wood scabbard has a hard black textured finish that will hold up better than smooth lacquer. A very tough version of the traditional katana. #500476...\$295

Overall-40 1/2" • Blade-28 3/8" long, 1 1/8" wide, 1/4" thick • Wt.-2 1/4 lbs.

Sword Walking Staff

Inspired by Old World sword walking staffs and its single edged cousin, our new offering hides a full length double-edged Tai Chi sword blade that is well-tempered high carbon steel. Handle and scabbard are lacquered wood. #500740...\$90 ✈

Overall-42" • Blade-29" long, 1" wide, 3/16" thick • Wt-1 lbs. 10 oz.

(Cannot be shipped to CA, MA, NY or Canada)



Shirasaya

This handsome Japanese sword is fitted to a mahogany grip and scabbard that are both endowed with beautiful depth and luster. The hand forged blade is from differentially tempered high carbon AISI 1060 steel. The "mune" (back of blade) is 45° Rockwell and the "ha" (edge) is 58° Rockwell. The "hamon" (temper line) is also *real*. Comes with certificate of authenticity, full cleaning kit with instruction booklet, and a cloth storage bag all packaged in a wood presentation box. Made in Longquan China, a swordmaking center for 2600 years. #500992...\$250

Overall-39 1/2" • Blade-29" long, 1 1/4" wide, 1/4" thick • Wt-2 lbs. 2 oz.



Kendo Top Hakama Pants

Hakama pants were first worn by Samurai and were adopted for Kendo because they provided great freedom of movement. The kendo top is a heavy, 100% white cotton jacket with 3/4 sleeves, which is suitable for a variety of martial arts. The hakama pants are 100% black rayon with fully pleated legs and koshiato in the back, which allows ties for a comfortable fit around the waist. Both pieces available in S/M and L/XL

Top-#100810...\$49 • Hakama-#100812...\$49



Gold Dragon Display Stand

This elegant resin display stand will enhance the beauty of your cherished weapon. 10" high x 18 1/4" long. #801530...\$18



Scimitar

The original scimitar was called a shamshir, (which meant "lion's tail") and had a deeply curved blade. Developed in Persia, this type of blade was effective for drawcuts. This blade is quite effective, being able to drawcut as well as slash. Made from high carbon steel by *Windlass Steelcrafts*®. Grip is wood, and the guard and scabbard furniture are steel. Complete with scabbard. #500822...\$235 ✂

CIRCA 1700

Overall-36" • Blade-30½" long, 1½" wide, ⅜" thick • Wt.-1 lb. 8 oz.

Oval Shield

This curved wooden shield is covered on the front with colored leather and shows the distinctive Jerusalem Cross in contrasting brass and rivets. Back is covered in canvas and has adjustable arm strapping. #801506...Reg. \$135...Closeout \$95 (\$5 addl. s/h)

20¼" x 31¼" • Wt-7 lbs. 5 oz.



Jambiya



CIRCA
1400s

The Jambiya is found in every country that has been inhabited by the Arabs, from Turkey to the Balkans, even in Spain. Our offering is of the form found in Persia and India and is worn at the stomach under a sash or belt. Beautiful solid hardwood grip with decorative rondels. Hardwood scabbard covered in thin black leather with nickel tip. #402118...\$70 ✂

Overall-14¾" • Blade 8¾" long, 2" wide, ⅜" thick • Wt-12 oz.

Horseman Helmet

This helm has leather straps on the crown and a real horsehair top knot. The brass nose guard and the steel pot have an antiqued finish. Mail skirting protects the neck. Approx. 26" inner cir. with an adjustable leather liner and chin strap. Wt.-3 lbs. 6 oz. Made by *Windlass Steelcrafts*®. #300388...\$195



Windlass Rustblocker

Fight the high cost of rust with the same vapor phase corrosion inhibitors (VpCI) developed for the military and NATO. The metal seeking vapors in Windlass Rustblocker form an invisible layer of electrochemical inhibitors that seal metal against the air and moisture. Easy spray-on application removes dirt & grime and seals bare metal for long lasting protection. Perfect for all metal products including knives, swords, axes, firearms or any metal part requiring cleaning and corrosion protection. #801488...\$10 No express shipping.



CALL TOLL FREE
1-800-883-8838

FRANK MILLER'S



Working closely from the source material, the amazing graphic novel *300*, and with direct consultation with the artist Frank Miller, we proudly introduce a line of fully licensed pieces as he envisioned them.



(A)

(A) Cape-Heavy, extra long, distressed 100% cotton. Measures 70" in length. Red only. Dry clean. #881001...\$89

(B)



(B) Vambraces-A set of steel vambraces plated in antiqued brass with full leather strapping. A perfect arm defense. #881005...\$95

(F)

Brooch-A perfect accent piece for your cape, worn by all Spartan warriors. Antiqued brass with leather strap and brass snap. Choose round or rectangle. \$24 each

(C)



(C) Approx. 3" dia. #881012

(D)



(D) Approx. 3" x 2". #881008

(E)



(E) Necklace-Giant 3" wolf's tooth with a 32" leather thong. Resin. #881009...\$20

(H)

(F) Briefs-All leather, adjustable rear snaps allow for better fit. Order S/M or L/XL. #881007...\$95

(G)

(G) Greaves-This stunning set of greaves completes the full Spartan outfit. **Steel, plated in antiqued brass** with strapping allows for a perfect fit. 24½" tall. #881006...\$160

(H) Sandals-All leather construction with rubber soles and three adjustable ankle straps. Men's whole sizes 7-13. Brown. #100958...\$74



The sword of sparta

Available for the first time, the fully licensed Spartan Sword . Direct from the amazing graphic novel and with direct consultation with Frank Miller, we bring you a battle ready version as only Museum Replicas® and Windlass Studios® can. 1095 high carbon steel, hand-forged and well tempered 24" blade with fuller. A full tang, with traditional peened over construction. Solid steel parts. Wood grip with genuine leather wrap. Includes "battle worn" full grain leather scabbard and baldric. Features full color certificate of authenticity. 30" overall, Wt.-approx. 3 lbs. A wicked blade any Spartan would have cherished in battle! Includes a full color Certificate of Authenticity. #881010...\$195 ✈

Spartan helmets

These incredible helmets are made of steel and plated in antiqued brass, fully lined in leather with an adjustable liner and chin strap.

King Leonidas Helmet-Features a genuine horse hair crest. Includes display stand and a full color Certificate of Authenticity. The helmet measures an impressive 19" in height, truly a helm of a warrior king. #881003...\$425

Spartan Helmet-Includes display stand and a full color Certificate of Authenticity featuring the stunning artwork of Frank Miller. 12" tall. #881002...\$350



Full Metal



Shield of sparta

This massive shield is made of steel and richly plated with antiqued brass. It is fully lined on the inside and features the traditional leather hand holds. Includes a full color Certificate of Authenticity. The shield measures a full 36" and weighs approx. 17 lbs. Protect yourself and your brother next to you, because this is Sparta! #881004...\$395

Spartan Letter Opener

Standing a full 7" high, all of the exacting detail of both the Spartan war sword and helmet are faithfully recreated in this beautiful letter opener. The sword alone measures 6 1/4" in length and easily returns to its resting place behind the helmet. The piece is finished off with a richly stained wooden base sporting the 300 logo. #881013...\$50

Spearhead and Buttcap

High carbon steel richly plated in antiqued brass. Allows you to fit these on any 1 1/4" dia. shaft of your choice. Sold only as a set. #881011...\$95

Spearhead: Overall 16", 2 1/4" wide • Wt.-1 lbs. 4 oz.

Buttcap: Overall 8 1/2" • Wt.-1 lbs. 4 oz.

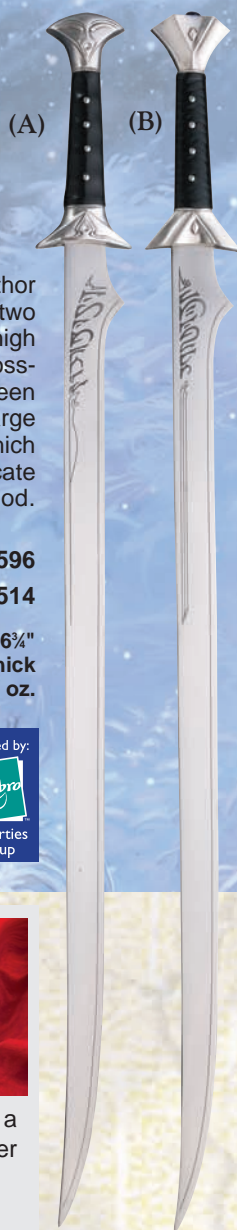


© 2008 Frank Miller, Inc. All Rights Reserved.

300, the 300 logo, and all characters featured in 300 and the distinctive likenesses thereof are trademarks of Frank Miller, Inc.



R.A. Salvatore's ICINGDEATH & TWINKLE



Museum Replicas Limited™ is proud to have worked with both celebrated author R.A. Salvatore and fantasy illustrator Todd Lockwood in bringing these two swords from the pages of fantasy to the realm of reality. Blades are forged of high carbon steel, and are richly adorned with Dark Elvish script. Pommel and cross-guard on both of these scimitars have been silver plated. Icingdeath has been accented with simulated diamonds, while Twinkle has been crowned with a large artificial blue sapphire. Each sword is shipped with a matching scabbard, which will allow you to carry one of these swords on each hip. Comes with a Certificate of Authenticity endorsed by both R.A. Salvatore and Todd Lockwood. Manufactured by Windlass Steelcrafts®. **\$245 Each** Limited quantities left!

THE SWORDS OF DRIZZT

(A) Icingdeath...#500596

(B) Twinkle...#500514

Overall-36¾"

Blade-30" long, 1¼" wide, ⅜" thick

Wt. 2 lbs. 5 oz.

Forgotten Realms, Wizards of the Coast and their logos, and all characters and their likenesses are trademarks or registered trademarks of Wizards of the Coast Inc., in the USA and other countries, a subsidiary of Hasbro Inc. Used under license.
© 2004 Wizards of the Coast.

Licensed by:



FORGOTTEN REALMS



Raven Claw

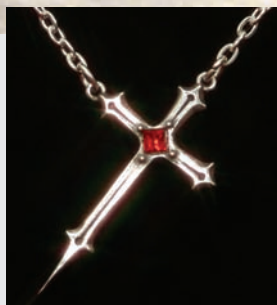
This wicked knife's hilt is cast metal and the deadly blade is blackened to a deep black luster. Made by **Windlass Steelcrafts®**. Includes metal and leather scabbard. **#401472...\$95** ✂

Overall-19½" • Blade-13¾" long, 1½" wide, ⅜" thick • Wt-1 lb.



Sanctuary Brácelet

As if torn from some ancient church door, this rustic bracelet resembles a gothic metal hinge. The heavy hammer work detail is offset by a magnificent piece of hematite between two garnet cabochons. Manufactured of soft shapable pewter. 2¾" wide. Approx. 7" tip to tip. Made in England. **#200994...\$54**



Croix Sinestre Pendant

This delicate Victorian grave cross hangs at an unusual angle, making

this a truly unique piece for any occasion. The 2" cross is fine pewter with a blood red stone in the center and hangs from a 22" metal chain. Made in England.

#200718...\$21



Raamael Pils Goblet

A Swarovski garnet crystal is centered upon the wings of an ancient dragon. Measures a full 5¼" tall. Fine drinkable pewter. Made in England. **#801964...\$80**

The PHANTOM

Before Batman, before The Shadow, before The Green Hornet, even before The Lone Ranger, the comics' first masked mystery-man hero had long since been striking fear into the dark hearts of the wicked...The Phantom!



Blocked barrel per gov. safety standards.

The Phantom's 1911 Colt Pistols

Through the years, The Phantom has become efficient with many weapons and forms of fighting, but his weapons of choice are his custom 1911 Colts. These officially licensed, non-firing full-metal guns are functional in every way: the magazine ejects, the barrel slides and the trigger pulls. The custom hardwood, black grips are inset with metal medallions of the symbols from the two famous rings he wears. A full-color display plaque, which can be either hung on a wall or stand freely on a shelf, along with a numbered Certificate of Authenticity is included. Strictly limited to **only 250 sets worldwide!** Made by Windlass Steelcrafts™ and the KIMAR gun factory of Italy. #885023...\$275 set Limited quantities left!



The Rings of Good and Evil

The two most iconic rings in comic strip history can now be yours! Both the rings of good and evil have been expertly reproduced in **real silver**. Each ring has been emblazoned with the opposing seal on either side and both come complete in their own purple collector's display box with a Certificate of Authenticity. Available in men's sizes; 10 or 12 only. \$75 each

(A) Ring of Good-#885025 • (B) Ring of Evil-#885026



The Phantom's Double Holsters

This is a perfect accessory item for the Phantom's double 1911 Colt pistols. This sleek, double holster is manufactured of heavy, top-grain black leather. The large metal antiqued belt buckle and hidden side Velcro strips, allows for an easy adjustability for a variety of waist sizes. Limited to 250 sets worldwide. Includes Certificate of Authenticity. #885024...\$125



© 2007 King Features Syndicate, Inc.
TM Hearst Holdings, Inc.



Made from authentic movie prop.

Wolverine Claws

Wolverine's past remains a great mystery. He remembers nothing of his life before adamantium, an indestructible metal that was surgically grafted onto his skeleton. Though quite reluctant at first, he remains one of the most loyal central figures of

the X-Men team to this day. Expertly replicated from the actual hero prop supplied by 20th Century Fox, you can now own the same set of claws as used on set by Hugh Jackman. Made of aluminum and stainless steel just like the original set. Includes custom X-Men display plaque (claws are permanently mounted) and hand numbered certificate of authenticity. Only 500 sets will be made so use your mutant powers to get this rare replica fast! Each claw 10½" long. #885007...\$149

The Cyclops Visor

This collectible has been expertly reproduced from the original prop currently housed in the 20th Century Fox archives. This visor is fully wearable and has a red polarized lens which is normally used to emit the destructive Cyclops blast. The visor comes with a custom metal storage container with both the X-Men logo embossed and the "Cyclops" name laser etched on the lid. The box lid interior contains a detailed schematic of the Cyclops visor, explaining all the technology and the quartz mechanisms required to control Cyclops' energy. Full color Certificate of Authenticity is included. This collectible will truly make you feel Professor X has given this visor directly to you! #885001...\$75



Helmet of Magneto

This full size replica prop is manufactured of metal and has been constructed utilizing the actual film prop (which is housed in the archives of 20th Century Fox) from the motion picture, **X-Men 3**. This amazing collectible has been painted to match the color scheme of the helmet in the film. It has an adjustable padded leather liner, allowing it to fit a variety of head sizes. The movable visor makes it both easy to wear and to remove. The helmet comes complete with an attractive display stand and a full-color, numbered Certificate of Authenticity. **Only 2,006 pieces will be made!** Be the first in your neighborhood to be able to block Professor Xavier's psionic waves! #885015...\$349

Less than 100 pieces remaining – get yours now before they're gone forever!

THOR

Hammer of the Mighty Thor

When Mark Millar's **Ultimates** series launched in 2000, it ushered in a whole new retelling of the Avengers' saga. Based on the hammer first seen when Thor first appears in **Ultimates #4**, this gigantic, full-size replica prop is truly made for a thunder god! Measuring a massive 42" in overall length, this reproduction of the mythical Mjolnir is hand crafted in steel, leather and wood. From the unsharpened axe head with a false edge, to the huge hammer head, no attention to detail has been overlooked. The hammer comes complete with an attractive floor display stand, which will allow all onlookers to behold the power of this amazing collectible. A full-color, hand numbered Certificate of Authenticity will be included. **Strictly limited to only 2,000 pieces!** Don't wait for ice giants to kick-in your front door, order yours soon! #885005...\$495



Helmet of Thor Lord of Asgard

The events which eventually lead to the end of Asgard began with the true death of Odin. Thor, son of Odin, takes up the mantle of rulership and becomes empowered with the mystical Odinfence, making him not only the God of Thunder but the true Lord of Asgard. This powerful helmet is a full-size, metal reproduction produced by **Windlass Studios®**. An attractive wooden display stand with nameplate and a numbered Certificate of Authenticity is included. Strictly limited to 1,000 pieces worldwide! #885002...\$395

The Shield of Captain America

Captain America is presented with a technologically-advanced new round shield made from a combination of Adamantium-Vibranium, perfect for America's great justice crusader. The alloy is indestructible, yet the shield is light enough to use as a discus-like weapon that can be angled to return to him like a boomerang. This is the quintessential shield associated with this great hero. Our version is hand hammered full steel, hand painted and accurately sized and dished to original blueprint specs. **Only 750 will be made worldwide!** Shield can be removed from plaque and has the proper genuine leather hand holds bolted to the back per Marvel blueprints. Includes full size "Army crate" wood display plaque and hand numbered certificate of authenticity. Shield cir. 30". Wt.-12 lbs. #885008...\$395



- Full Metal Shield
- Wooden Display Plaque w/S.H.I.E.L.D. Logo
- Leather Arm Straps

Marvel and all related character names and the distinctive likenesses thereof TM & © 2008 Marvel Characters, Inc. All rights reserved. www.marvel.com



Robert Jordan's The Wheel of Time™



The Heron Mark Sword from *The Wheel of Time*™ -series by Robert Jordan, one of the most successful fantasy epics published in the last 25 years. We are very proud to offer a Heron Mark sword. The sword is hand-forged, and of a very tough high carbon steel. The guard and pommel are of brass, and the balance is simply superb. Authorized and approved by the estate of Robert Jordan, this sword is an accurate copy of those blades in *The Wheel of Time*™ series. Once you hold this blade in your hands, you realize how quick and deadly is the sword. A superb example of the swordmaker's art. Scabbard included. Hand made by Windlass Steelcrafts®. Includes Certificate of Authenticity. **#500058...\$275** ✂

Overall-42" • Blade-32" long, 1¼" wide, ⅜" thick • Wt.-2 lbs. 12 oz.

The Wheel of Time™, The Dragon Reborn™ and the snake-wheel ornament are trademarks of Robert Jordan.

Raptor

We have named this new fantasy sword for the fierce prehistoric predator. The pommel is in the form of its deadly claw, but of course, the long curving blade is the real force of this beast. Gracefully contoured parts are steel and the wood and leather grip is adorned with raised areas for a good grasp. Like all our swords, this well balanced cutting sword features a tough high carbon, fully tempered blade. Made by **Windlass Steelcrafts**®. Includes scabbard. **#501090...\$215** ✂

Overall-41¼" • Blade-31¼" long, 1⅞" wide, ⅜" thick • Wt-2 lbs. 9 oz.

Leather & Steel Vambraces



These pieces of armor for the lower arm are made from a double thickness of heavy leather and have antiqued steel riveted on in a decorative pattern. Made by **Windlass Steelcrafts**®. **#200606...\$90 pair**



Soul of the Dragon Belt Buckle

As if embedded in blue ice, this sleeping dragon awaits its rebirth. Rich pewter with a deep blue cystalex inlay. Fits up to a 1½" belt (not included). Oval measures 3½". Made in England. **#200992...\$80**

Wizard's Cloak

Tall and mysterious in this hooded long cloak, our wizard stands out above them all. The hood and the front openings have an eye catching trim in gold and black. Black cotton velvet. One size fits most. Dry clean only. **#100004...\$139**

Visit Our Website:

www.museumreplicas.com





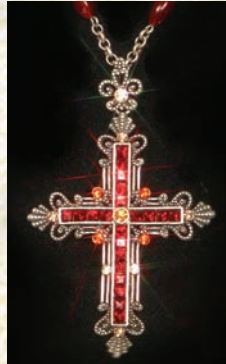
Gatekeeper Coat

From a video game kingdom comes this awesome long coat made of a shimmering nylon with an extra full hood and bell sleeves. The double-action front zipper allows for a variety of different looks. Complete with a chain of accent crosses and keys. S/M or L/XL. **#100948...\$120**



Crimson Cross Necklace

This stunning cross measures a full 2 1/2" by 1 1/2" and is inlaid with blood red glass with 11 simulated jewels. Adjustable clasp necklace is 22" and is a combination of antiqued silver colored chain, metal decorations and simulated stones. **#200684...\$24**



Anime Duster

Jumping right from a frame of your favorite anime series, this extra long coat utilizes a series of heavy snaps for a secure closure, while the rugged denim material offers a durable alternative over a standard costume. Long side splits, removable side belts and a high collar. Sizes S, M, L, or XL. Dry Clean. Available in red or black. **#100778...\$125**

Barbarian Battle Axe

Easily swung with one hand, this axe is long enough to use with two if desired. A real conversation piece. Made from high carbon steel by **Windlass Steelcrafts®**. **#600758...\$95**

Overall 30"
Blade: 10" head to spike, 10 1/2" edge
Wt.-2 lbs. 8 oz.



Dark Warrior

This new helmet will give any warrior a fearsome aspect as he faces down the most deadly foes. The helm offers good coverage with its full cheek pieces and lower extension that terminate in raised teeth. Adjustable liner with chin strap, 18 gauge steel. Made by **Windlass Steelcrafts®**. **#300426...\$210**



Cyclops Skull

From the land beyond, comes this remnant of a time when horned cyclops walked the Earth. Antiqued cold-cast porcelain. 6" tall. **#801632...\$18**



15th Century Regal Chalice

This massive chalice is certain to be a focal point of any table setting. Measuring a full 8" in height, its six lobe base is encroached with ivy, while its fluted column is set with red and black Austrian crystal "poison ivy berries." The saying, "One Poison Drives Out Another" runs around the inscription band. Fine drinkable pewter. Made in England. #801922...\$199



Topaz Dream Picture Frame

This elegant frame is a masterpiece of antique bronze colored scroll work with artificial gold and topaz stones. Measures 7 1/4" wide, 9 1/4" tall. Accommodates a 4" x 6" photograph. Photograph not included.

#801942...\$24



Gothic Arch Candelabra

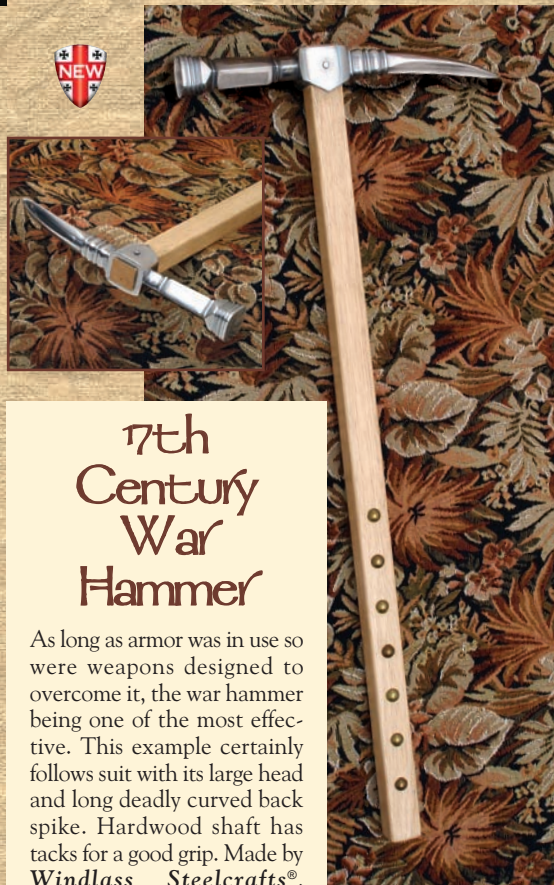
Rich Gothic architecture comes to life in this magnificent candle holder. Made of a cold-cast polystone, this piece has a gray finish, resembling the stone of some ancient church. Holds 5 tea light candles (not included). Measures 14" x 2 1/4" x 4 1/2". #801936...\$34

PRSR1 STD
U.S. Postage
PAID
Museum
Replicas
Limited

Museum Replicas LimitedTM
A Division of ATLANTA CUTLERY CORP.
Box 840 • Conyers, GA 30012
www.museumreplicas.com

Call TOLL-FREE 1-800-883-8838

This code is important for your order.



17th Century War Hammer

As long as armor was in use so were weapons designed to overcome it, the war hammer being one of the most effective. This example certainly follows suit with its large head and long deadly curved back spike. Hardwood shaft has tacks for a good grip. Made by **Windlass Steelcrafts®**. #600788...\$125

Overall-26"
Head-11"
Wt-2 lbs. 11 oz.